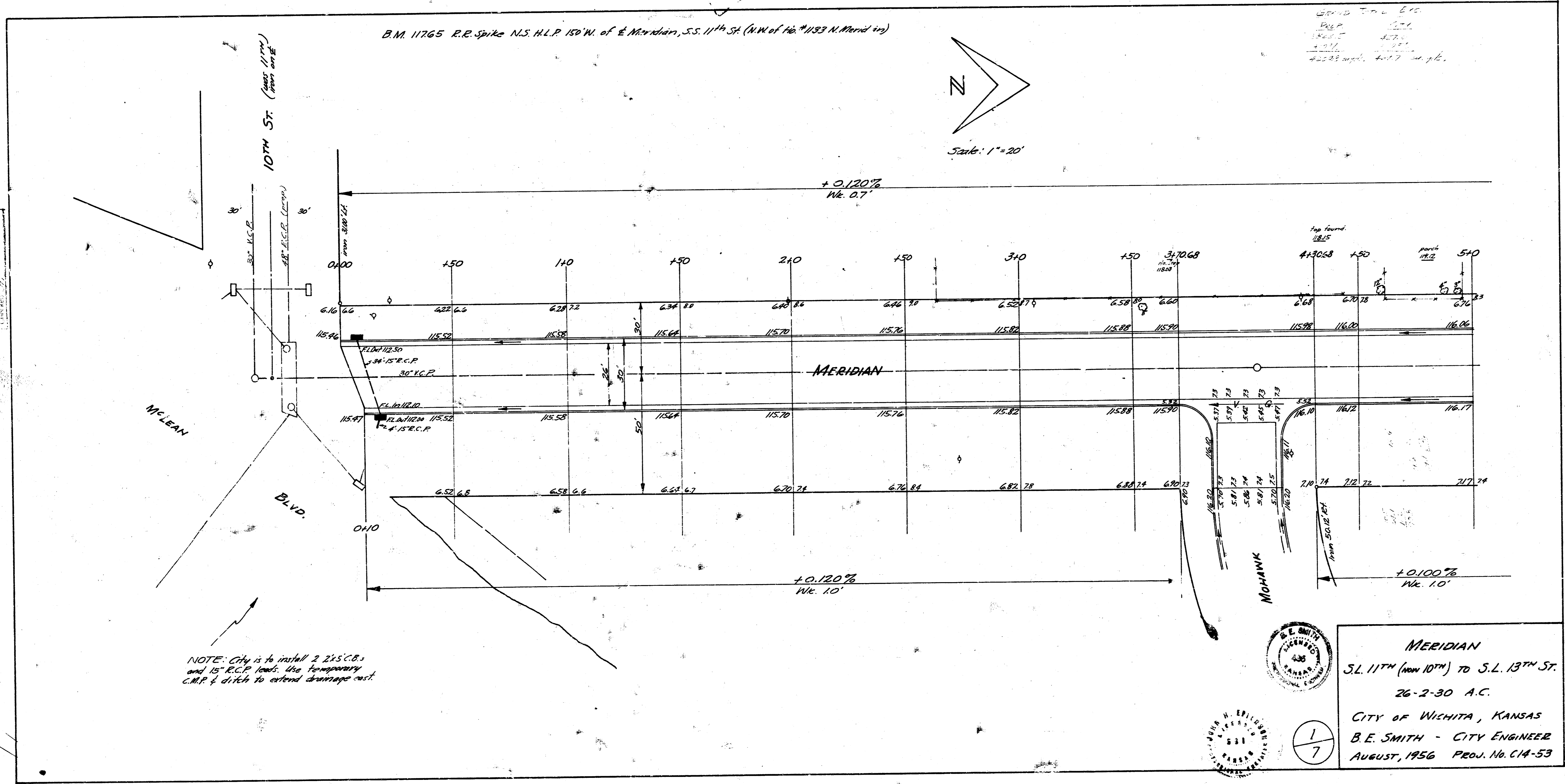
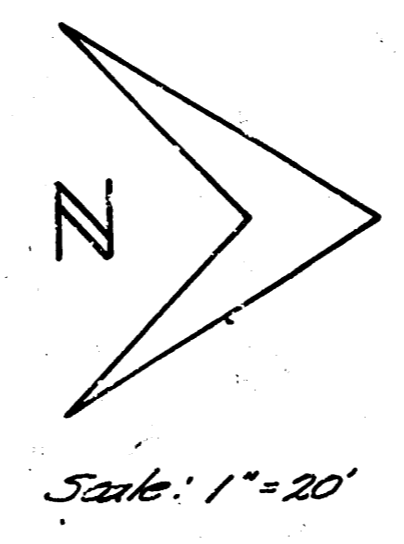


B.M. 11765 R.R. Spike N.S. H.L.P. 150' W. of E. Meridian, S.S. 11th St. (NW of 1/4 #183 N. Merid in)

GROUND TABLE ETC.
 11765 11766
 11767 11768
 11769 11770
 11771 11772
 11773 11774

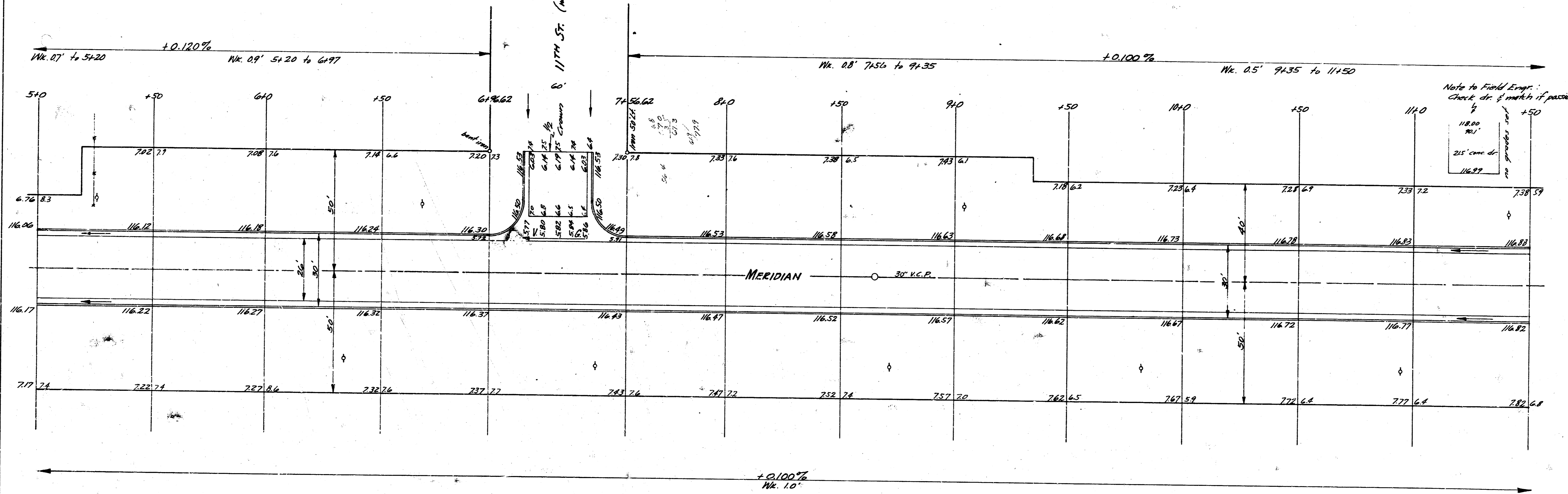
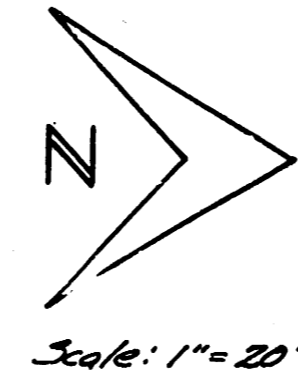


NOTE: City is to install 2 24" S.C.B.'s and 15" R.C.P. leads. Use temporary C.M.P. & ditch to extend drainage east



1/7

MERIDIAN
 S.L. 11th (near 10th) TO S.L. 13th ST.
 26-2-30 A.C.
 CITY OF WICHITA, KANSAS
 B.E. SMITH - CITY ENGINEER
 AUGUST, 1956 PROJ. No. C1A-53



2
7
MERIDIAN
Prov. No. C-14-53

