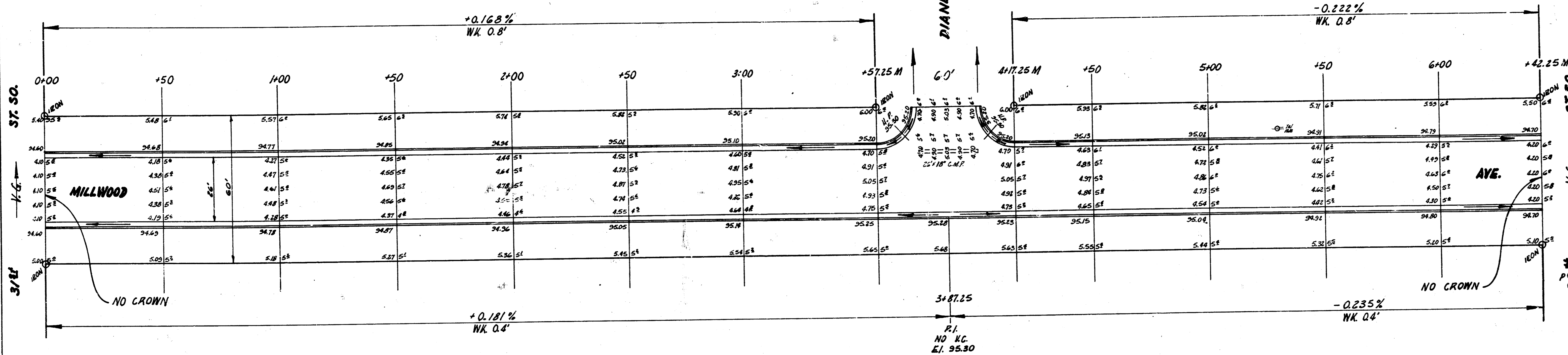
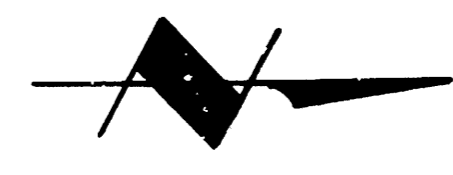


B.M. 95.67 Standard N.E. Cor. Glenn & 31st St. South

Sta. on W.L.

DATE: 9/1/54
BY: B.E. SMITH



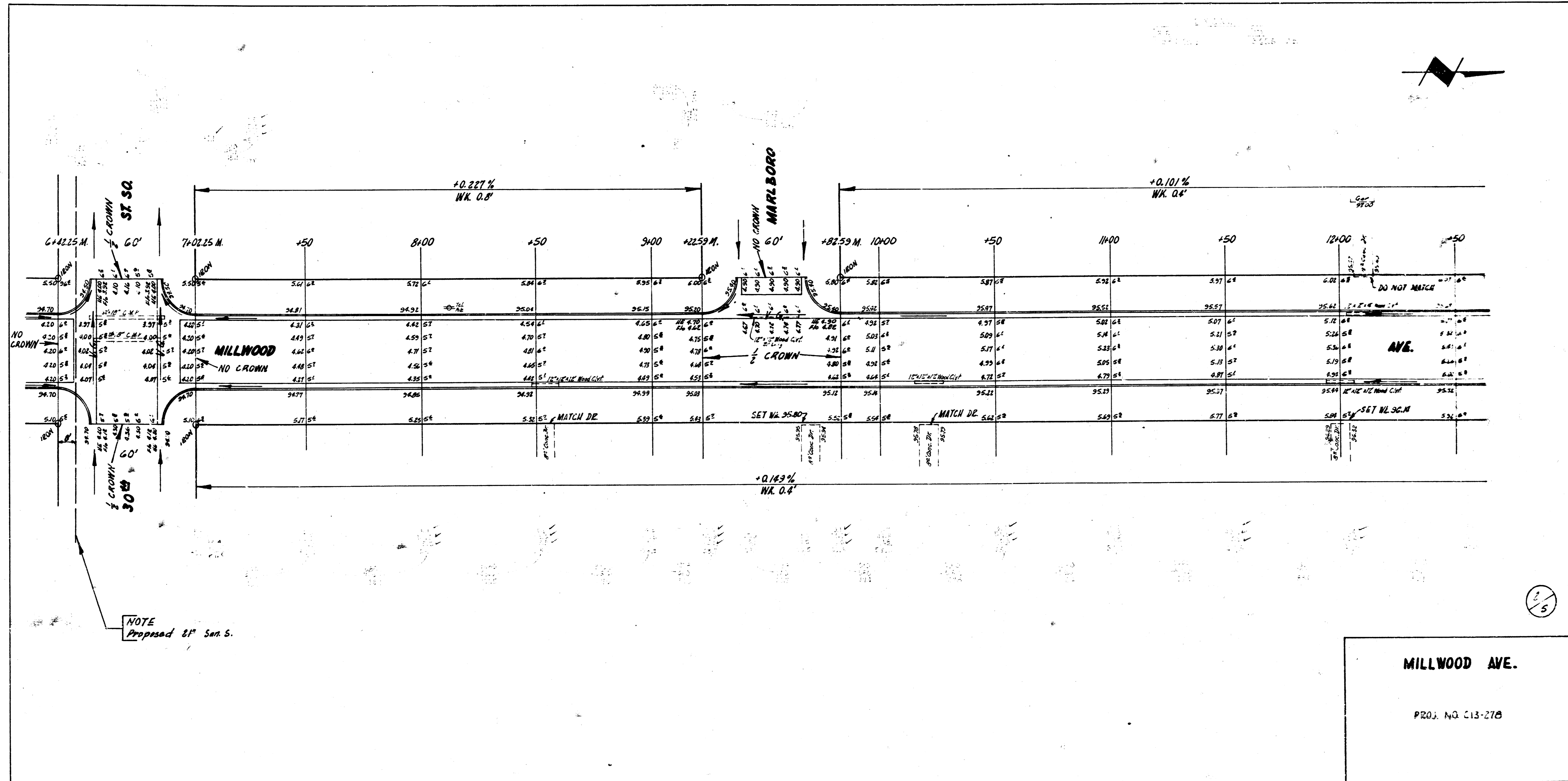
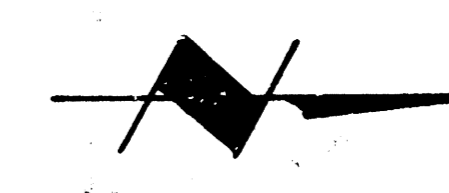
1/2" = 100'
1/4" = 50'

NOTE TO FIELD ENGINEER & CONTRACTOR
All Entrance Pipes Are To Be Disposed Of
In Accordance With City Dirt Checkers
Instructions.



MILLWOOD AVE.
N.L. 31ST ST. SO. - S.L. 27TH ST. SO.
26 - 2 - 30 AC
CITY OF WICHITA, KANS.
B. E. SMITH CITY ENGINEER
SEPT., 1954 PROJ. NO. C13-278

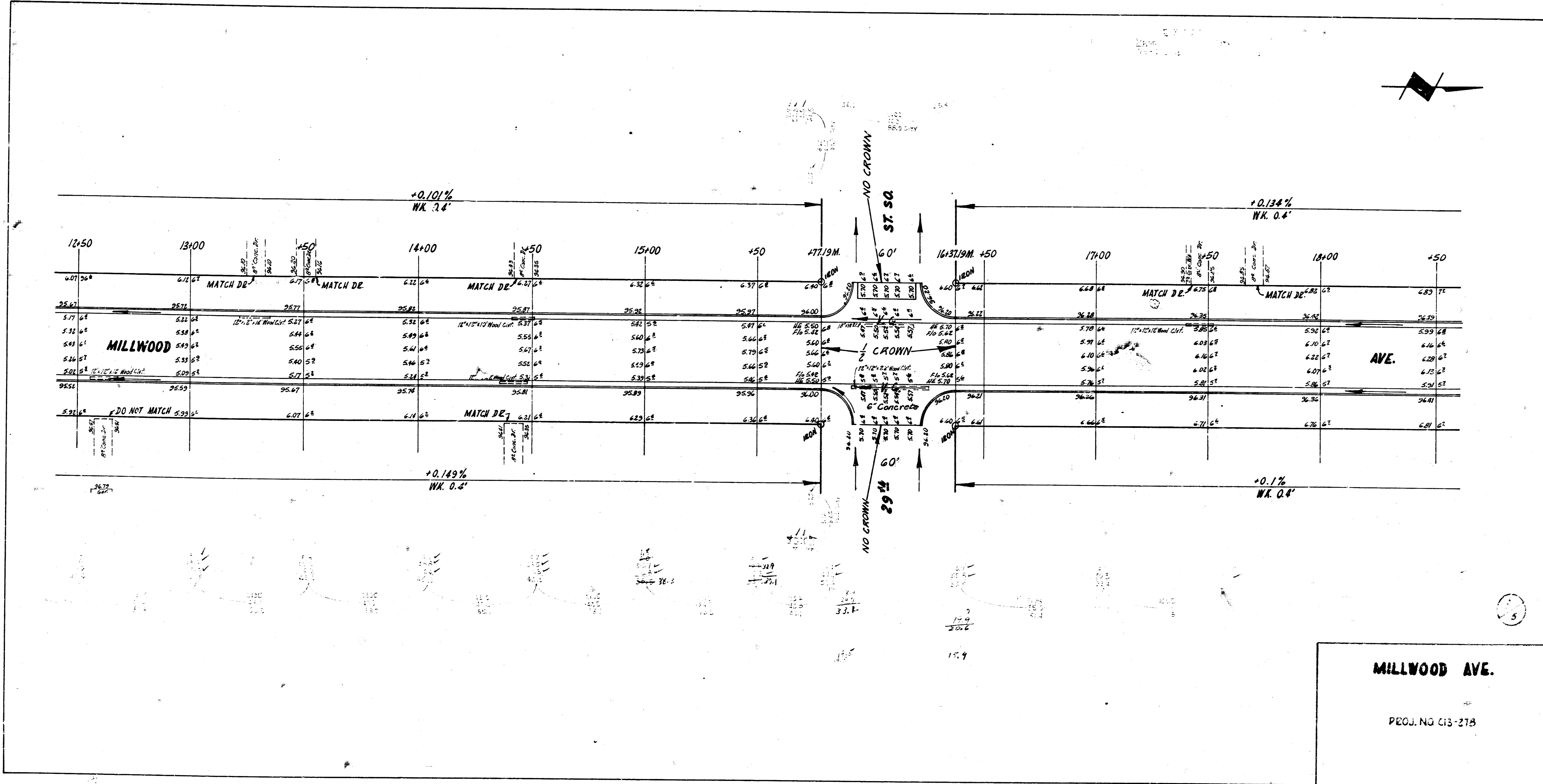
1/5

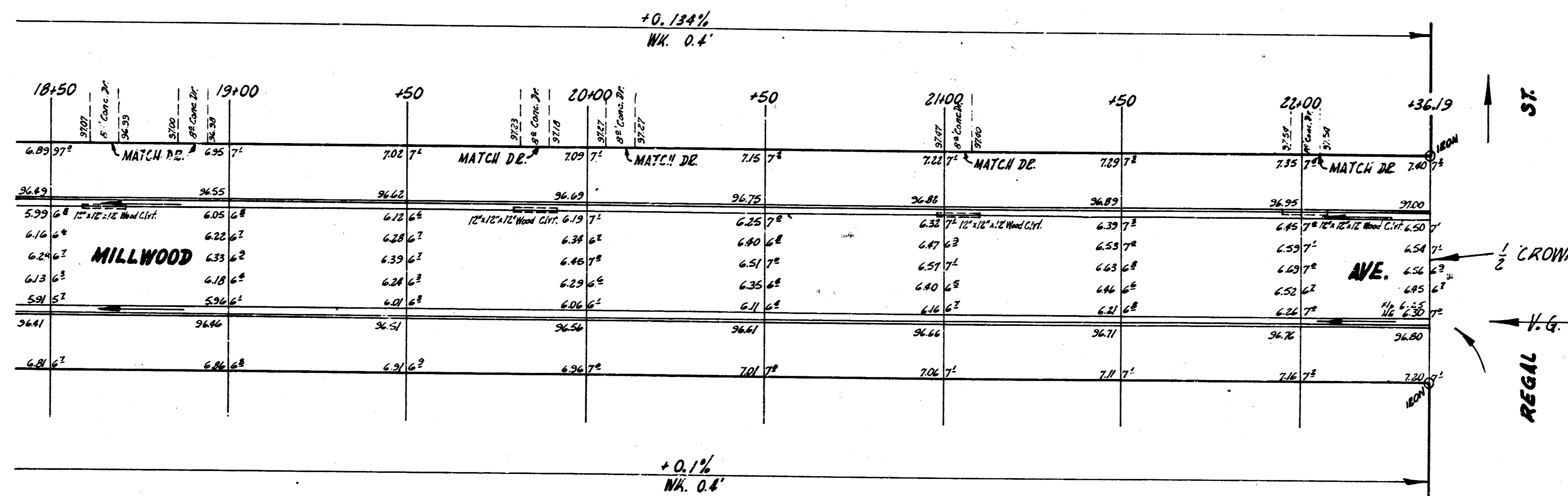


2/5

MILLWOOD AVE.

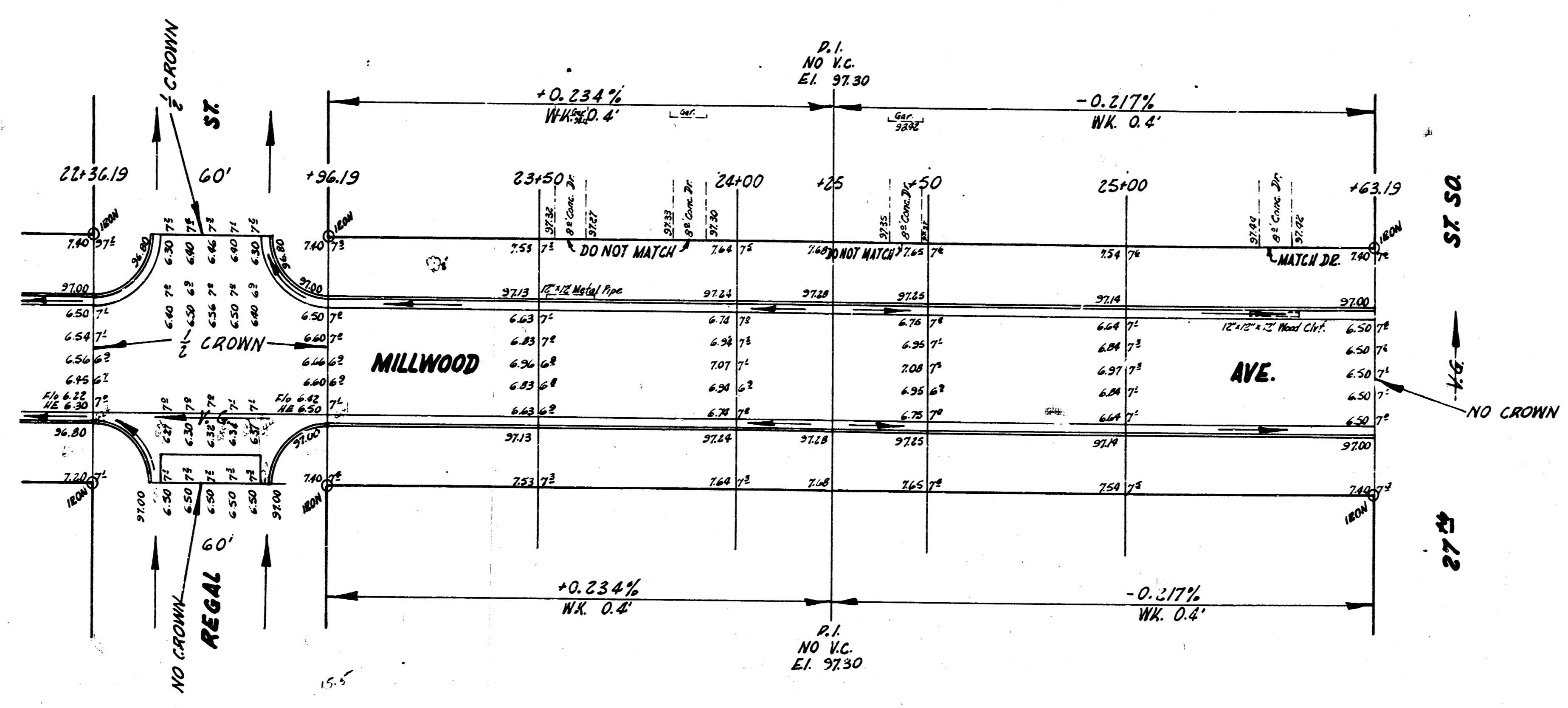
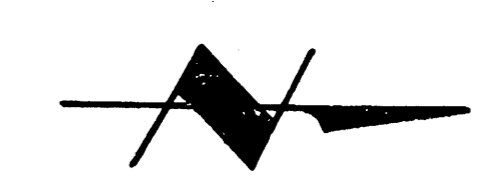
PROJ. NO. C13-278





4/5

MILLWOOD AVE.
PROJ. NO. C13-278



5/5

MILLWOOD AVE.
PROJ. NO. C13-278