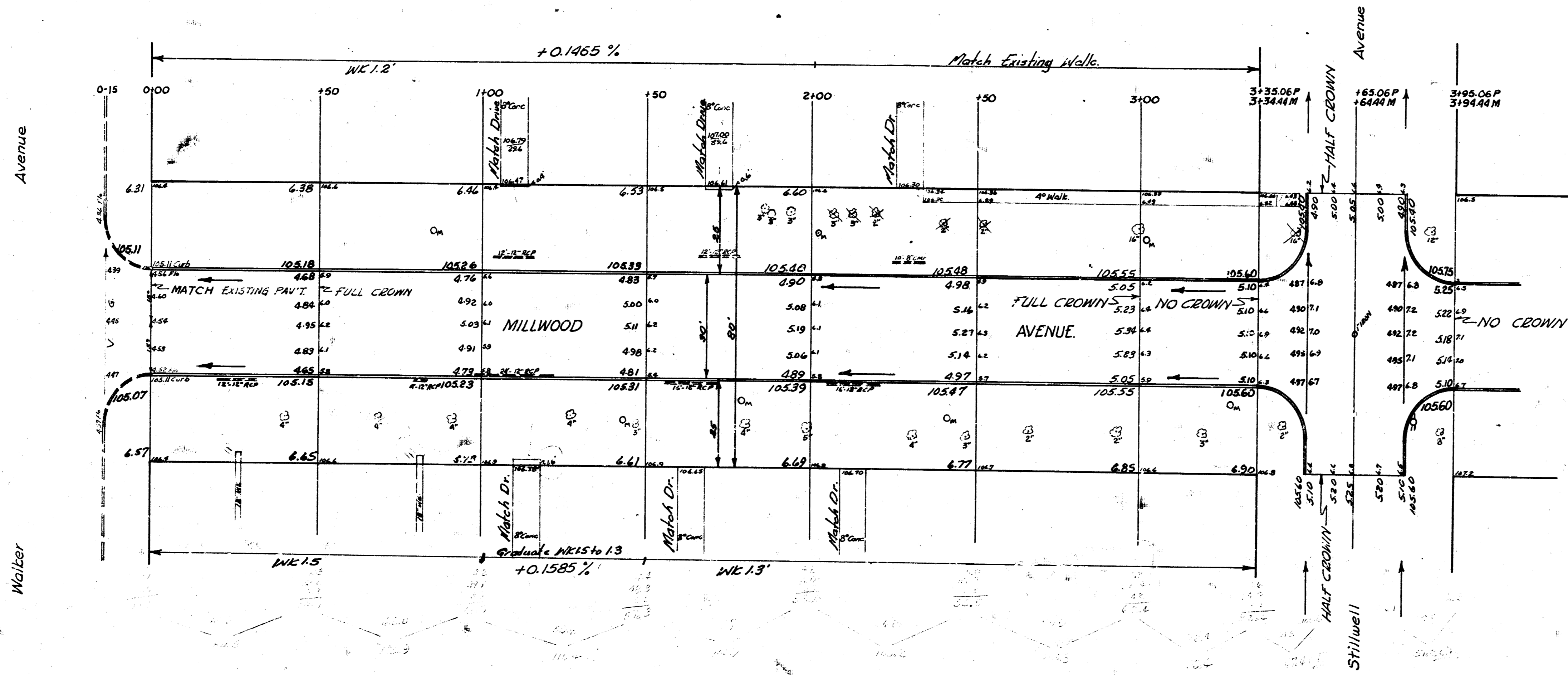
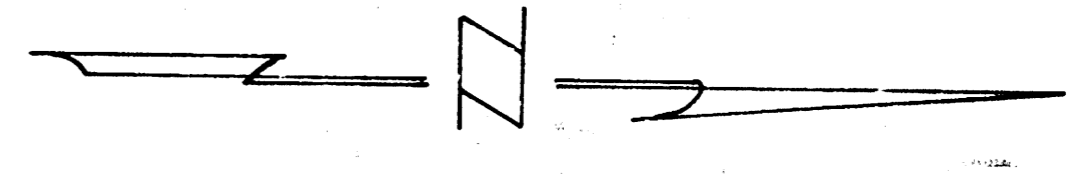


BM: 108.00 'M' in Mueller Fireplug NE corner Millwood & Walker.



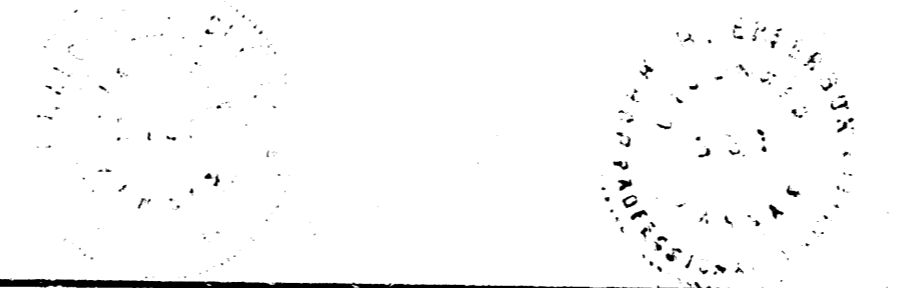
Sanitary Sewer
 Plain Concrete
 12" Dia. 10' Spacing
 12" Dia. 10' Spacing
 12" Dia. 10' Spacing



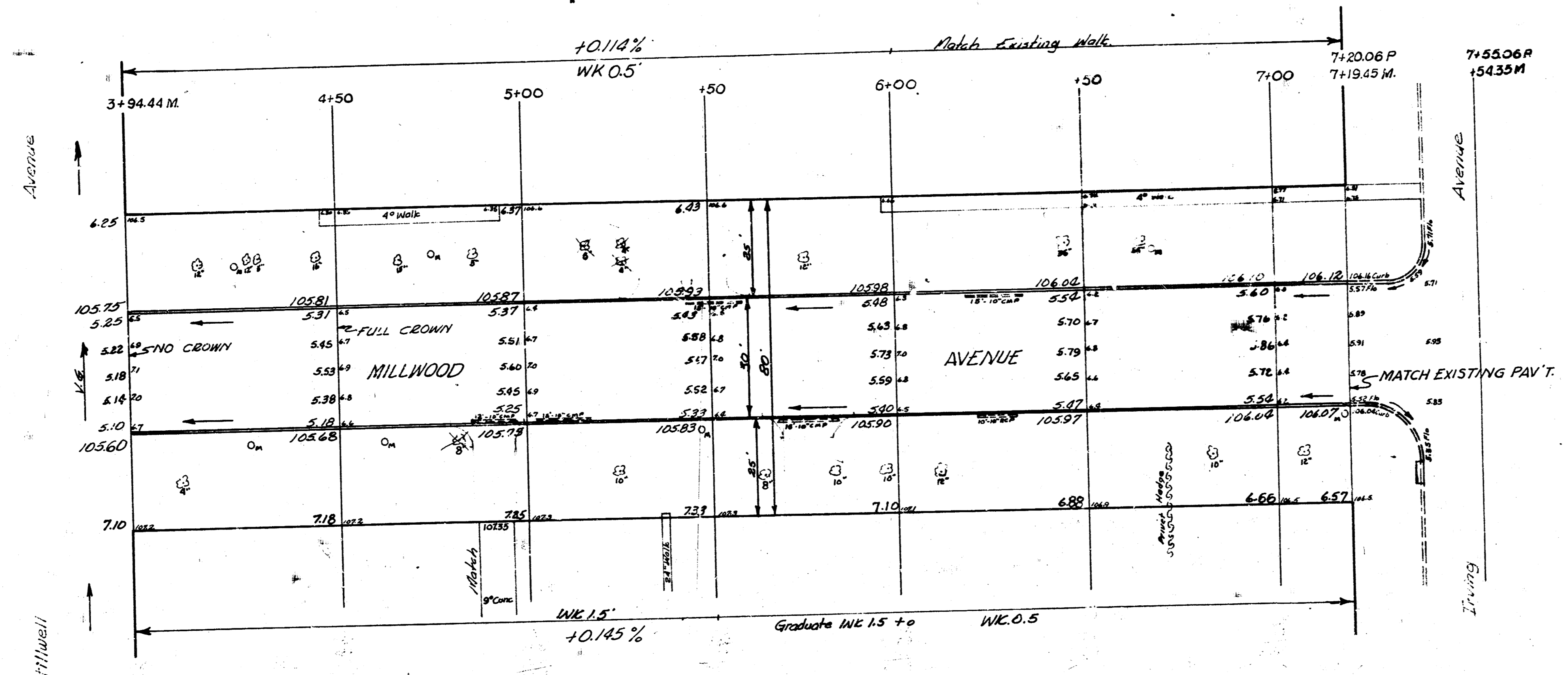
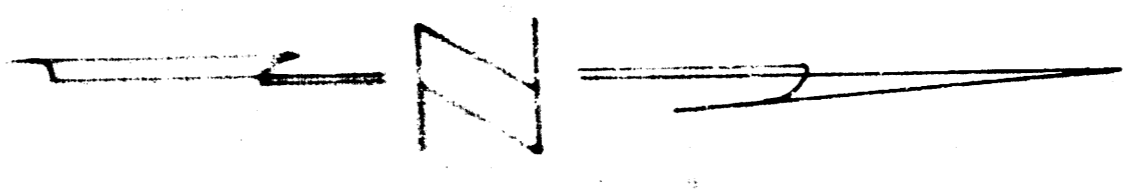
NOTICE TO CONTRACTOR:
 All entrance pipes are to be disposed of in accordance
 with instructions of the City Dirt Checker.

Sheet 1 of 2

MILLWOOD AVENUE
 NL Walker to SL Irving
 30" Conc'd Cb
CITY OF WICHITA, KANSAS
 B.E. SMITH CITY ENGINEER
 AUG 1957 PROJ. NO. C17-40



Excavation -
Page 14 -
223.6 cu yds.



MILLWOOD AVENUE
NL Walker to SL Irving
Sheet 2 of 2
Proj. No. C 17-40