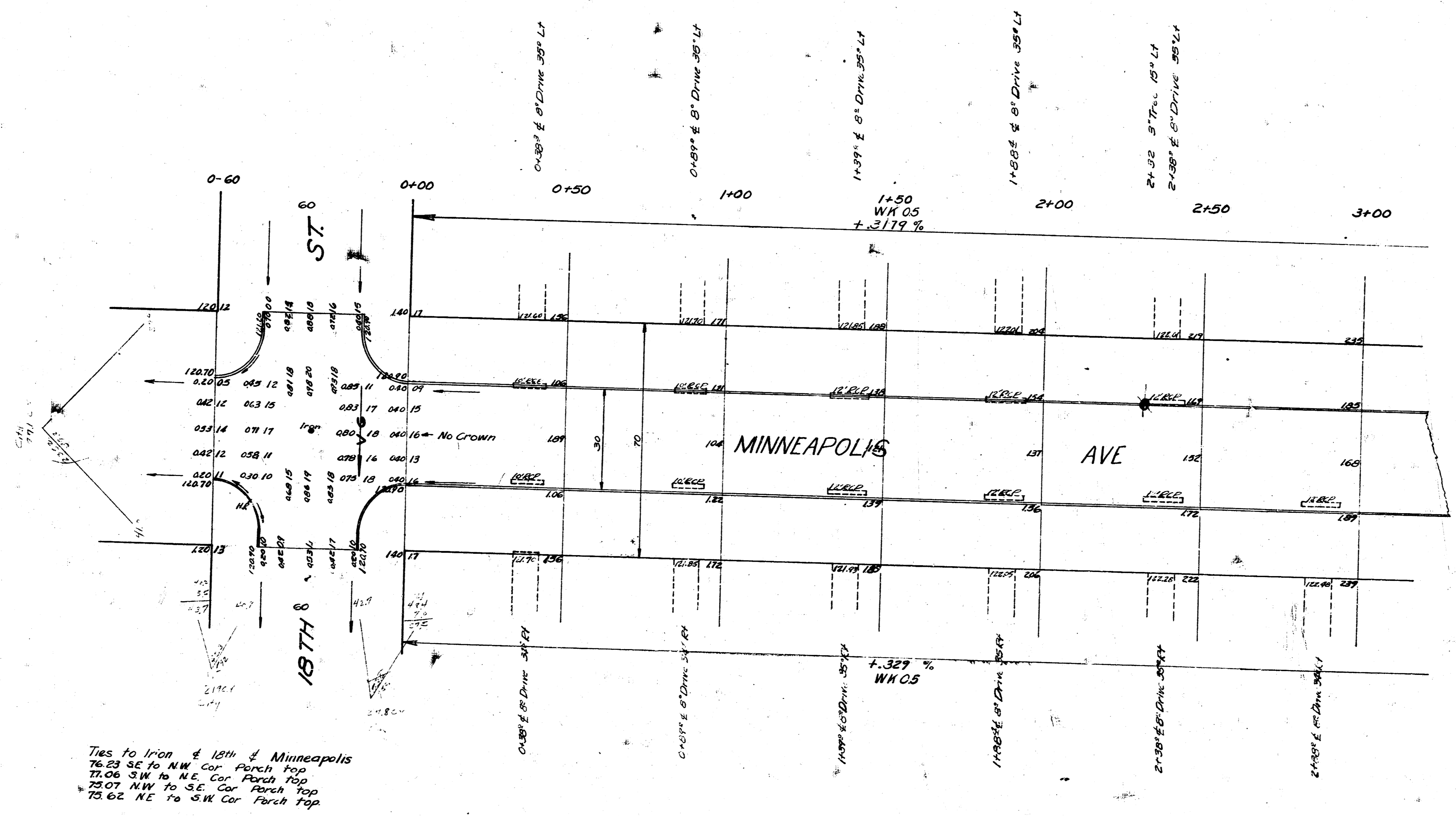


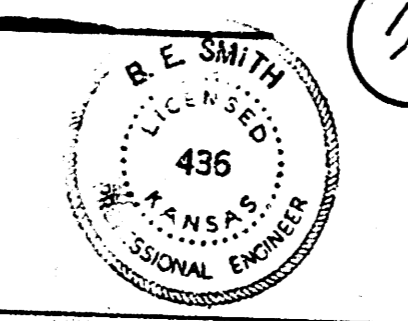
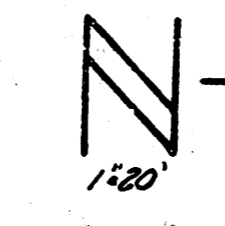
BM 12336 S.E. Cor. Step Has #2002 N Minneapolis Ave

Prop. 1065.8
+ 10.7%
1109.7
252.1



Ties to Iron @ 18th & Minneapolis
75.23 SE to NW Cor. Patch Top
77.06 SW to NE Cor. Patch Top
73.07 NW to SE Cor. Patch Top
73.62 NE to SW Cor. Patch Top

Note about Pot Pits



MINNEAPOLIS AVE.
S.L. 18TH ST. TO N.L. 19TH ST.
30' CONC. & Cb.
CITY OF WICHITA, KAN.
B.E. SMITH
Jan. 1953
CITY ENGINEER
Proj. No. C12-98

Survey by B.H.K. Checked

