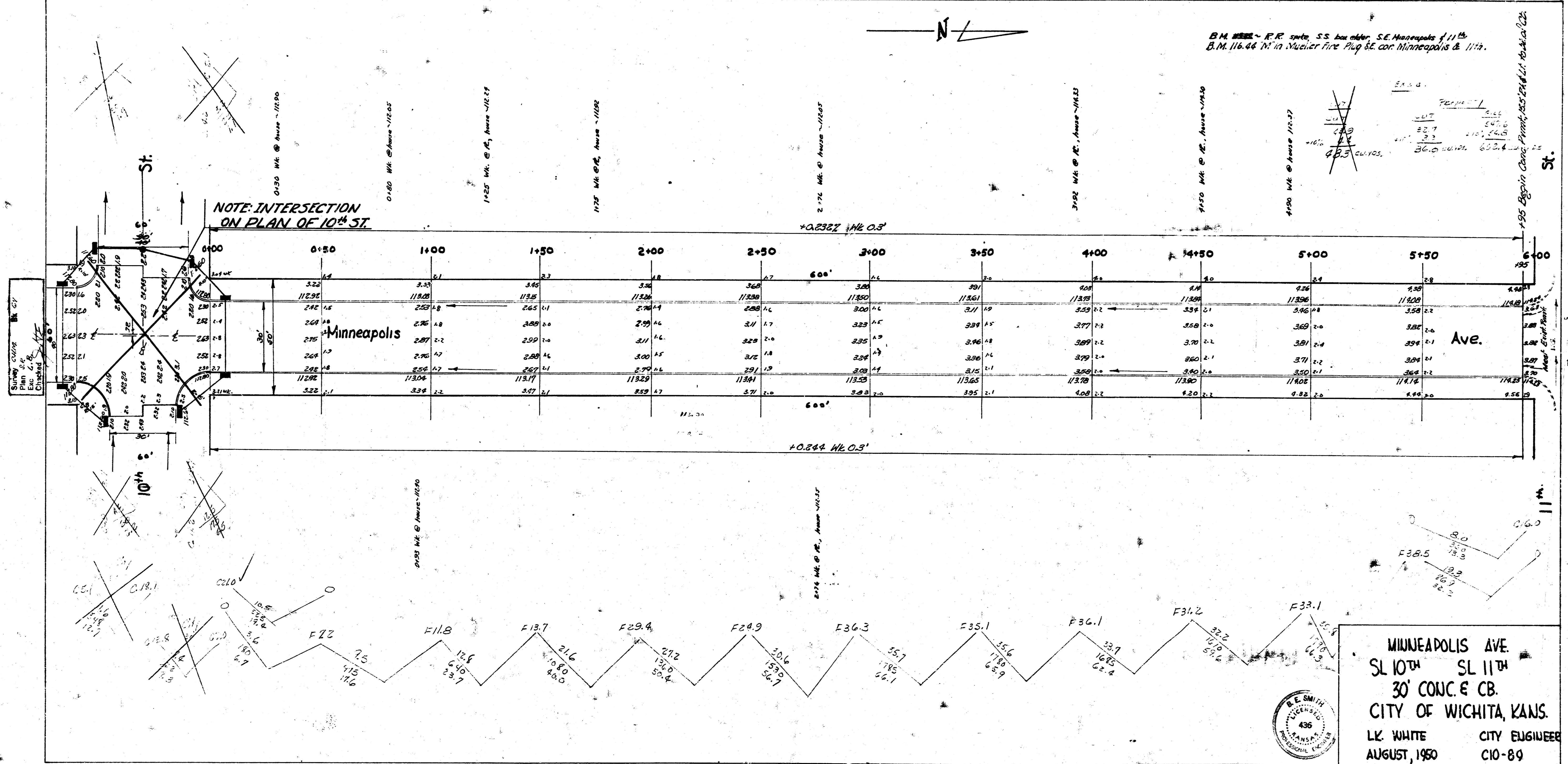


B.M. 116.46 in. N. corner of S.E. corner of 11th St. & 11th St.  
 B.M. 116.46 in. N. corner of S.E. corner of 11th St. & 11th St.



MINNEAPOLIS AVE.  
 SL 10th SL 11th  
 30' CONC. & CB.  
 CITY OF WICHITA, KANS.  
 L.K. WHITE CITY ENGINEER  
 AUGUST, 1950 C10-89

