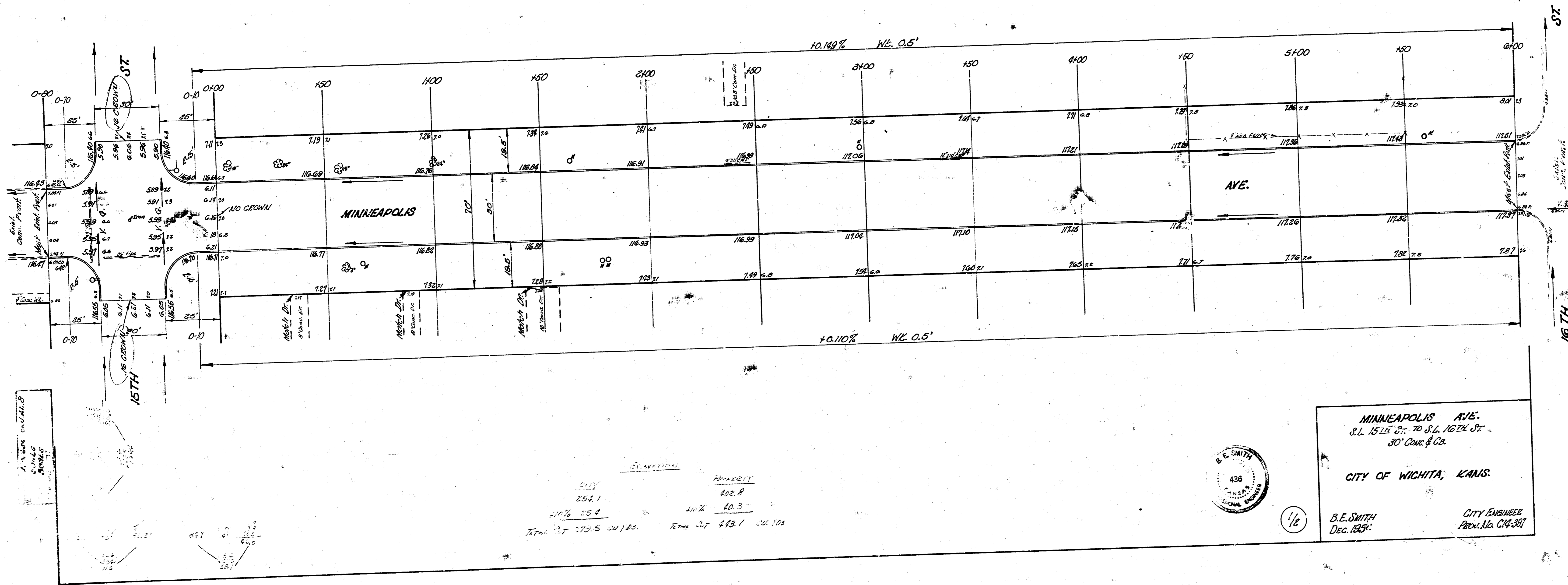
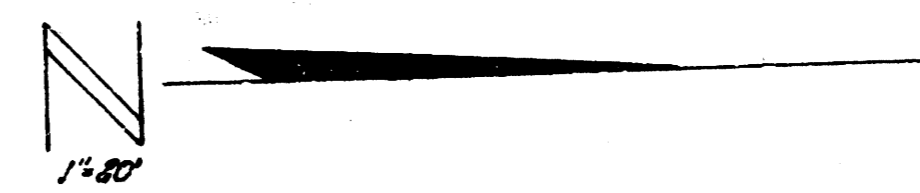


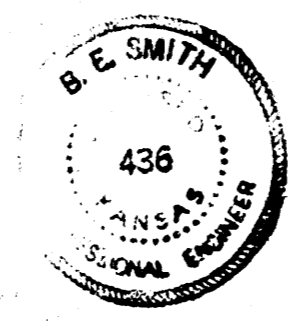
B.M. 116.77 3" in GLOBE ckt. of W.L. S.L. 15TH, E.L. Minneapolis
 B.M. 117.53 3" in GLOBE S. Cd. 163' W. of W.L. Minneapolis

Tree to Tree & Minneapolis & 15TH:
 50.15' N.W. to nail in W. ft. of Tree.
 50.65' S.W. to nail in N. ft. of Tree.
 51.66' S.E. to nail in S. ft. of Tree.

NOTE TO FIELD ENGINEER & CONTRACTOR:
 All entrance pipes are to be placed
 as directed by City Ditch Checker



DATE	PROJECT
254.1	402.8
410% 25.2	40.3
27th ST 27th S 20120.	27th ST 27th S 20120.



MINNEAPOLIS AVE.
 S.L. 15TH ST. TO S.L. 16TH ST.
 30' Conc. & Co.
CITY OF WICHITA, KANS.
 B.E. SMITH
 Dec. 1928
 CITY ENGINEER
 Proj. No. C14-301