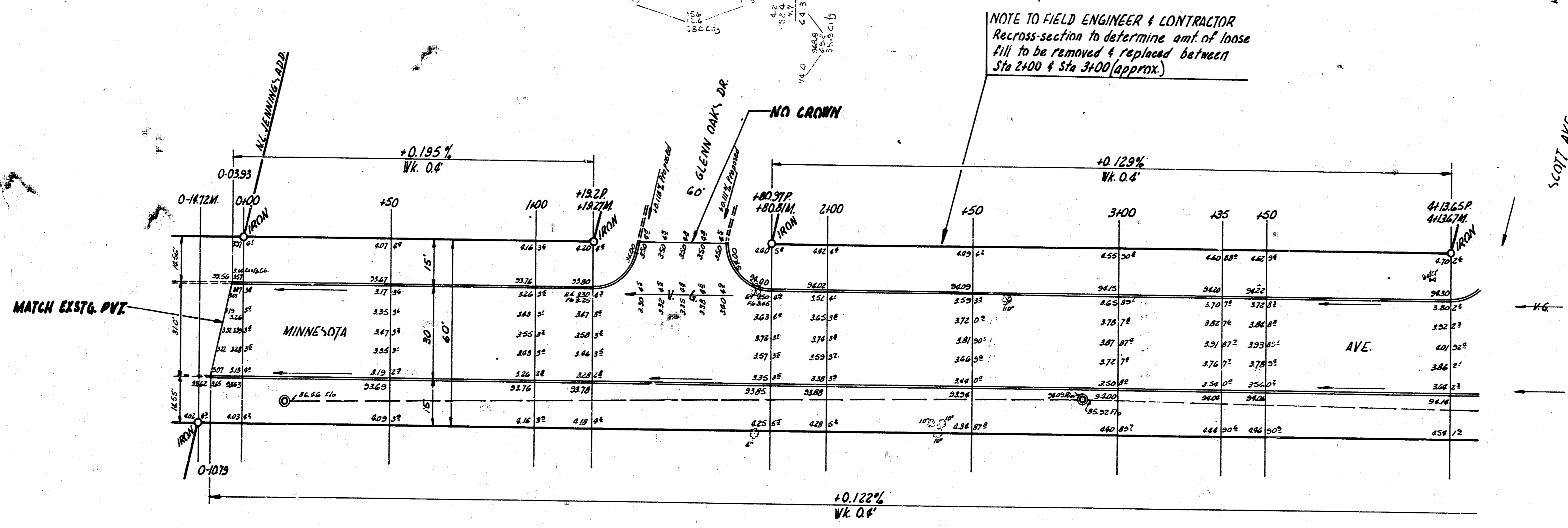
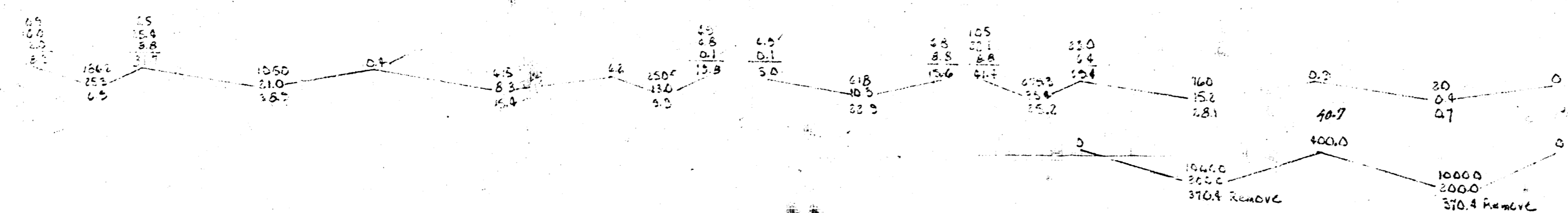


BM 94.90 N.E. corner 1st Step House 2401 S. Minnesota
 BM 94.32 S.E. corner concrete porch house 2451 S. Minnesota

Chaining From S. to N. on W.P.



NOTE TO FIELD ENGINEER & CONTRACTOR
 Recross-section to determine amt. of loose
 fill to be removed & replaced between
 Sta 2+00 & Sta 3+00 (approx.)



DRAWN BY
 J. W. HARRIS
 L.S. 1122
 CHECKED BY
 J. W. HARRIS



MINNESOTA AVE.
 N.L. JENNINGS ADD - N.L. CARSON
 30' CONC. & CB
 CITY OF WICHITA, KANS.
 BE SMITH CITY ENGINEER
 MARCH 1956 PROJ C15-64

TOTAL FILL		TOTAL EXCAV	
From	315.3	From	317.3
To	318.5	To	318.5
	316.5		316.5
	316.5		316.5

1/3

