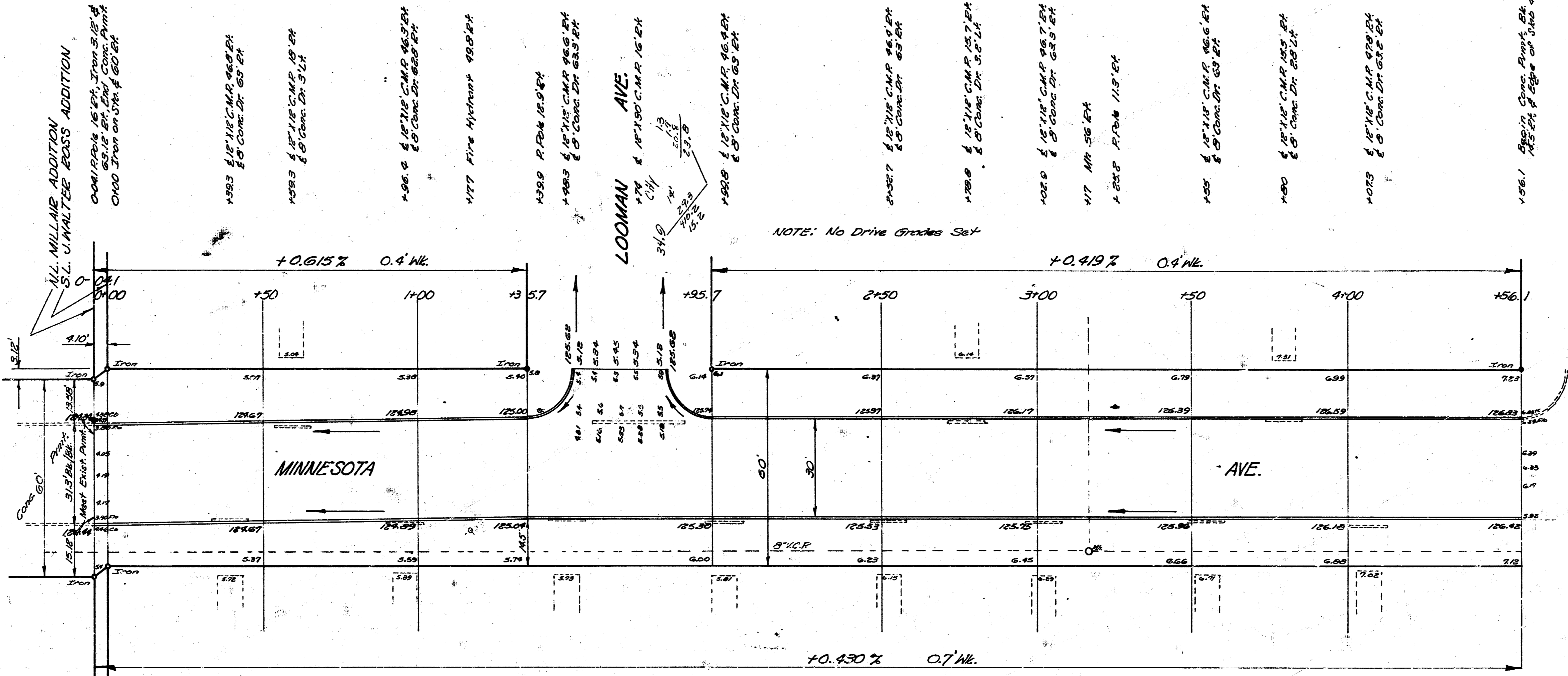


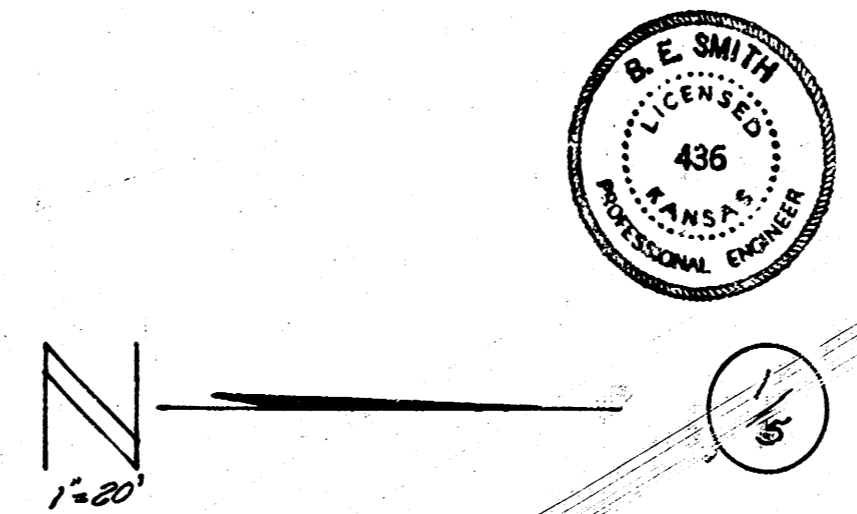
B.M. 12437 6' in GLOBE, N.C. 23rd N.L. Minnesota  
 Stationing on N.E.

Survey 1714  
 1/20  
 1/20  
 1/20  
 Checked



Exc.	
Property	City
1419.2	260.3
+10% 161.9	+10% 26.0
TOTAL 1789.2	TOTAL 286.3

**NOTE TO CONTRACTOR & FIELD ENGINEER:**  
 All Entrance Pipe to be placed on owner's property.  
 If owner wishes pipe hauled away, Street Depth  
 will remove same.



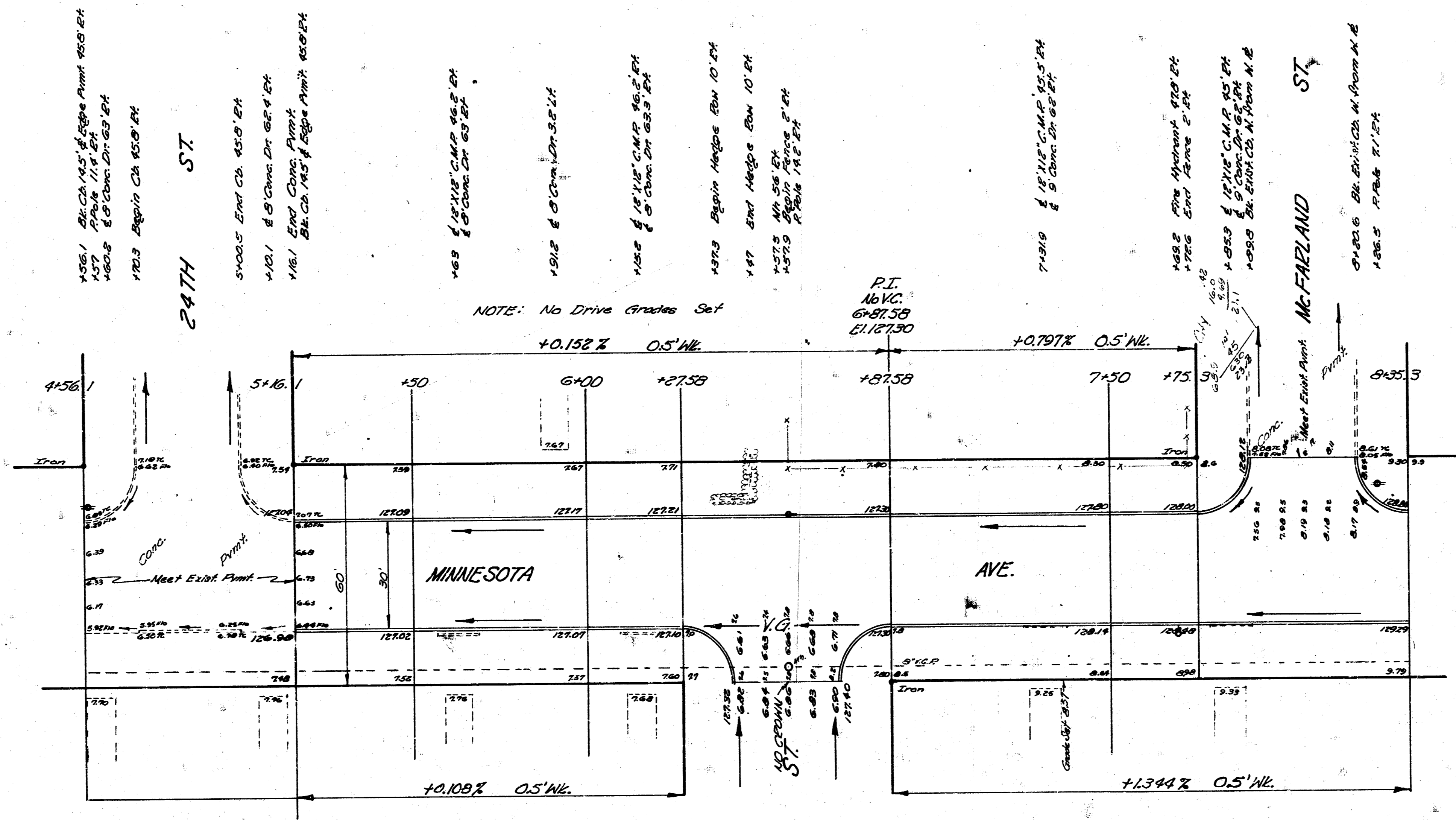
MINNESOTA AVE.  
 N.L. MILLAIE ADDN. TO S.L. 25TH ST.  
 30' CONC. & CB.

CITY OF WICHITA, KANSAS

B.E. SMITH  
 Jan. 1953

CITY ENGINEER  
 PROJ. NO. C12114

B.M. 129.57 N.W. Cor. Conc. Porch, House #3450 N. Minnesota.



1456.1 B.M. CH. 145.7' 8.00' P.M. 150.0' ST.  
1457 17.0' 11.4' ST.  
1458.2 8.0' 11.4' ST.  
1703.3 B.M. CH. 150.0' ST.

24TH ST

5+00.5 B.M. CH. 150.0' ST.  
1451.1 8.0' 11.4' ST.  
1451.1 8.0' 11.4' ST.  
1451.1 8.0' 11.4' ST.

NOTE: No Drive Grades Set

P.I.  
6+87.59  
EL. 127.130

7+31.0 18.115' C.M.P. 125.5' ST.  
8.0' 11.4' ST.

1458.2 8.0' 11.4' ST.  
1458.2 8.0' 11.4' ST.

1458.2 8.0' 11.4' ST.  
1458.2 8.0' 11.4' ST.

1458.2 8.0' 11.4' ST.  
1458.2 8.0' 11.4' ST.

McFARLAND ST

24TH ST

MINNESOTA AVE.  
1/8

1"=20'

