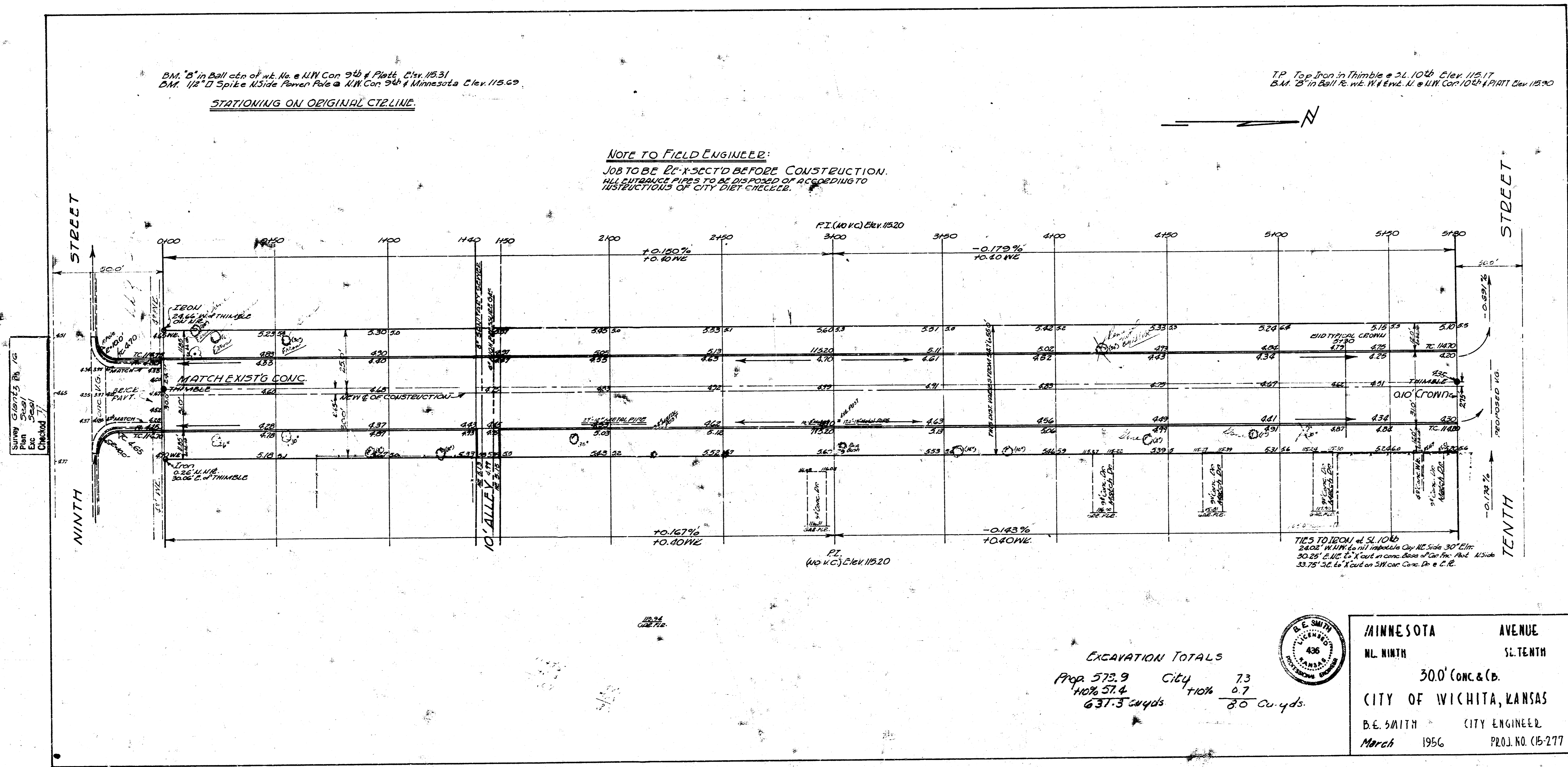
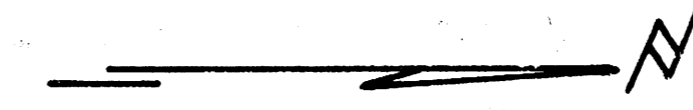


BM. 3" in Ball ctn of wt. No. 6 I.W. Con 946 of Platt, Elev. 115.31
 BM. 1/2" D Spike N. Side Power Pole @ I.W. Con 946 of Minnesota Elev. 115.69

STATIONING ON ORIGINAL C.T. LINE.

T.P. Top Iron in Thimble @ 24.104 Elev. 115.17
 B.M. 3" in Ball P. wt. No. 11 of I.W. Con 1024 of Platt Elev. 115.90

NOTE TO FIELD ENGINEER:
 JOB TO BE RE-EXC'D BEFORE CONSTRUCTION.
 ALL ENTRANCE PIPES TO BE DISPOSED OF ACCORDING TO
 INSTRUCTIONS OF CITY DEPT. ENGINEER.



EXCAVATION TOTALS
 Prop 573.9 City 73
 10% 57.4 10% 0.7
 631.3 cu yds 80 cu yds.



MINNESOTA AVENUE
 N. NINTH ST. TENTH
 30.0' CONC. & C.B.
 CITY OF WICHITA, KANSAS
 B.E. SMITH CITY ENGINEER
 March 1956 PROJ. NO. CB-277