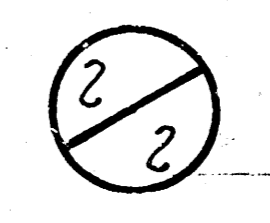
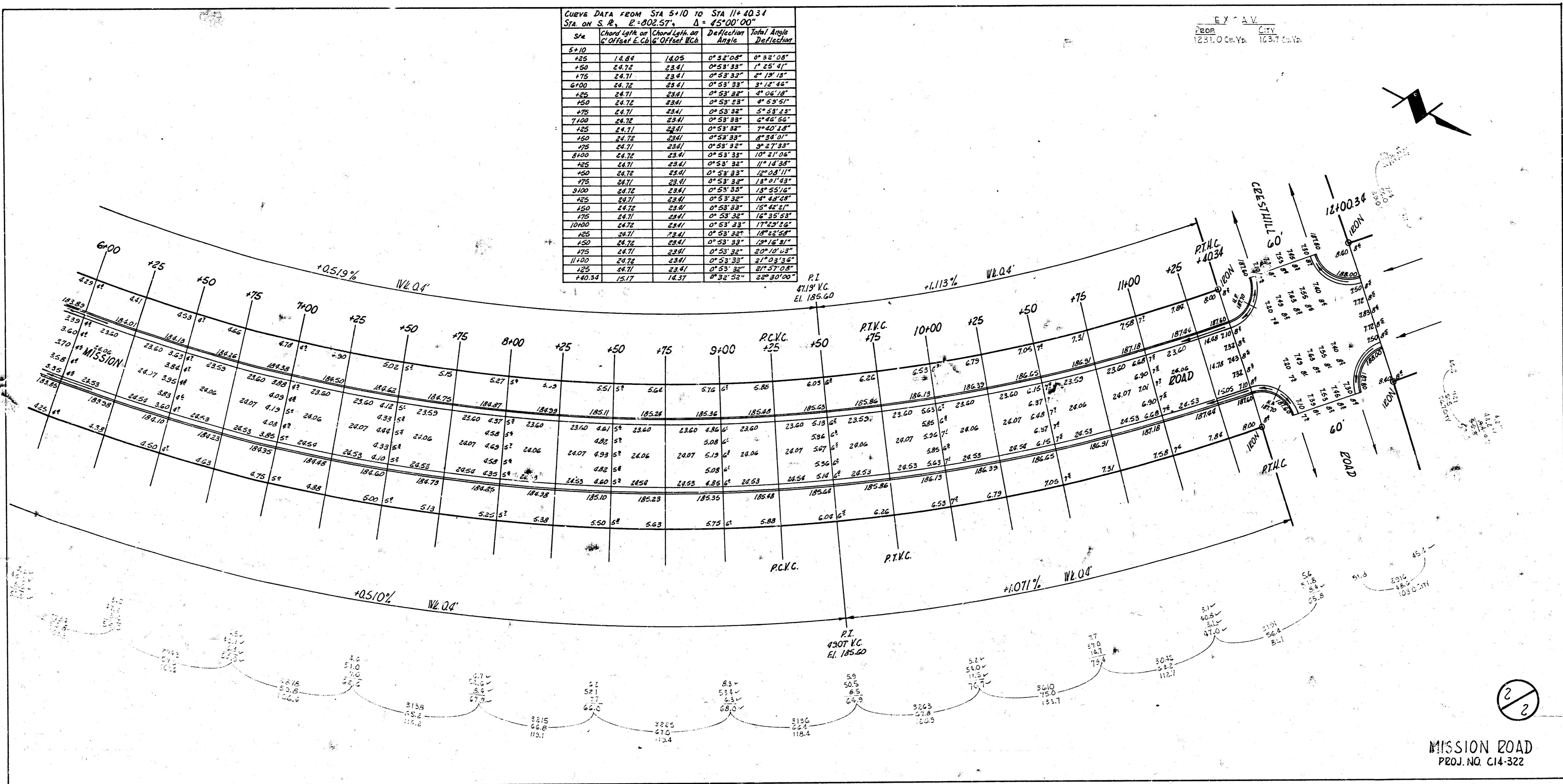


CURVE DATA FROM STA 5+10 TO STA 11+40.34
 STA ON S. R. E. +002.57' Δ = 45°00'00"

Sta	Chord Length	Chord Offset	Deflection Angle	Total Angle
5+10	16.80	1.605	0°32'00"	0°32'00"
5+25	24.72	2.471	0°53'33"	1°25'33"
5+50	32.64	3.261	0°53'33"	2°19'06"
5+75	40.56	4.051	0°53'33"	3°12'39"
6+00	48.48	4.841	0°53'33"	4°06'12"
6+25	56.40	5.631	0°53'33"	4°59'45"
6+50	64.32	6.421	0°53'33"	5°53'18"
6+75	72.24	7.211	0°53'33"	6°46'51"
7+00	80.16	8.001	0°53'33"	7°40'24"
7+25	88.08	8.791	0°53'33"	8°33'57"
7+50	96.00	9.581	0°53'33"	9°27'30"
7+75	103.92	10.371	0°53'33"	10°21'03"
8+00	111.84	11.161	0°53'33"	11°14'36"
8+25	119.76	11.951	0°53'33"	12°08'09"
8+50	127.68	12.741	0°53'33"	13°01'42"
8+75	135.60	13.531	0°53'33"	13°55'15"
9+00	143.52	14.321	0°53'33"	14°48'48"
9+25	151.44	15.111	0°53'33"	15°42'21"
9+50	159.36	15.901	0°53'33"	16°35'54"
9+75	167.28	16.691	0°53'33"	17°29'27"
10+00	175.20	17.481	0°53'33"	18°23'00"
10+25	183.12	18.271	0°53'33"	19°16'33"
10+50	191.04	19.061	0°53'33"	20°10'06"
10+75	198.96	19.851	0°53'33"	21°03'39"
11+00	206.88	20.641	0°53'33"	21°57'12"
11+25	214.80	21.431	0°53'33"	22°50'45"
11+50	222.72	22.221	0°53'33"	23°44'18"
11+75	230.64	23.011	0°53'33"	24°37'51"
12+00	238.56	23.801	0°53'33"	25°31'24"
12+25	246.48	24.591	0°53'33"	26°24'57"
12+50	254.40	25.381	0°53'33"	27°18'30"
12+75	262.32	26.171	0°53'33"	28°12'03"
13+00	270.24	26.961	0°53'33"	29°05'36"
13+25	278.16	27.751	0°53'33"	29°59'09"
13+50	286.08	28.541	0°53'33"	30°52'42"
13+75	294.00	29.331	0°53'33"	31°46'15"
14+00	301.92	30.121	0°53'33"	32°39'48"
14+25	309.84	30.911	0°53'33"	33°33'21"
14+50	317.76	31.701	0°53'33"	34°26'54"
14+75	325.68	32.491	0°53'33"	35°20'27"
15+00	333.60	33.281	0°53'33"	36°14'00"
15+25	341.52	34.071	0°53'33"	37°07'33"
15+50	349.44	34.861	0°53'33"	38°01'06"
15+75	357.36	35.651	0°53'33"	38°54'39"
16+00	365.28	36.441	0°53'33"	39°48'12"
16+25	373.20	37.231	0°53'33"	40°41'45"
16+50	381.12	38.021	0°53'33"	41°35'18"
16+75	389.04	38.811	0°53'33"	42°28'51"
17+00	396.96	39.601	0°53'33"	43°22'24"
17+25	404.88	40.391	0°53'33"	44°15'57"
17+50	412.80	41.181	0°53'33"	45°09'30"
17+75	420.72	41.971	0°53'33"	46°03'03"
18+00	428.64	42.761	0°53'33"	46°56'36"
18+25	436.56	43.551	0°53'33"	47°50'09"
18+50	444.48	44.341	0°53'33"	48°43'42"
18+75	452.40	45.131	0°53'33"	49°37'15"
19+00	460.32	45.921	0°53'33"	50°30'48"
19+25	468.24	46.711	0°53'33"	51°24'21"
19+50	476.16	47.501	0°53'33"	52°17'54"
19+75	484.08	48.291	0°53'33"	53°11'27"
20+00	492.00	49.081	0°53'33"	54°05'00"
20+25	500.92	49.871	0°53'33"	54°58'33"
20+50	508.84	50.661	0°53'33"	55°52'06"
20+75	516.76	51.451	0°53'33"	56°45'39"
21+00	524.68	52.241	0°53'33"	57°39'12"
21+25	532.60	53.031	0°53'33"	58°32'45"
21+50	540.52	53.821	0°53'33"	59°26'18"
21+75	548.44	54.611	0°53'33"	60°19'51"
22+00	556.36	55.401	0°53'33"	61°13'24"
22+25	564.28	56.191	0°53'33"	62°06'57"
22+50	572.20	56.981	0°53'33"	62°50'30"
22+75	580.12	57.771	0°53'33"	63°44'03"
23+00	588.04	58.561	0°53'33"	64°37'36"
23+25	595.96	59.351	0°53'33"	65°31'09"
23+50	603.88	60.141	0°53'33"	66°24'42"
23+75	611.80	60.931	0°53'33"	67°18'15"
24+00	619.72	61.721	0°53'33"	68°11'48"
24+25	627.64	62.511	0°53'33"	69°05'21"
24+50	635.56	63.301	0°53'33"	69°58'54"
24+75	643.48	64.091	0°53'33"	70°52'27"
25+00	651.40	64.881	0°53'33"	71°46'00"
25+25	659.32	65.671	0°53'33"	72°39'33"
25+50	667.24	66.461	0°53'33"	73°33'06"
25+75	675.16	67.251	0°53'33"	74°26'39"
26+00	683.08	68.041	0°53'33"	75°20'12"
26+25	691.00	68.831	0°53'33"	76°13'45"
26+50	698.92	69.621	0°53'33"	77°07'18"
26+75	706.84	70.411	0°53'33"	78°00'51"
27+00	714.76	71.201	0°53'33"	78°54'24"
27+25	722.68	71.991	0°53'33"	79°47'57"
27+50	730.60	72.781	0°53'33"	80°41'30"
27+75	738.52	73.571	0°53'33"	81°35'03"
28+00	746.44	74.361	0°53'33"	82°28'36"
28+25	754.36	75.151	0°53'33"	83°22'09"
28+50	762.28	75.941	0°53'33"	84°15'42"
28+75	770.20	76.731	0°53'33"	85°09'15"
29+00	778.12	77.521	0°53'33"	86°02'48"
29+25	786.04	78.311	0°53'33"	86°56'21"
29+50	793.96	79.101	0°53'33"	87°49'54"
29+75	801.88	79.891	0°53'33"	88°43'27"
30+00	809.80	80.681	0°53'33"	89°37'00"
30+25	817.72	81.471	0°53'33"	90°30'33"
30+50	825.64	82.261	0°53'33"	91°24'06"
30+75	833.56	83.051	0°53'33"	92°17'39"
31+00	841.48	83.841	0°53'33"	93°11'12"
31+25	849.40	84.631	0°53'33"	94°04'45"
31+50	857.32	85.421	0°53'33"	94°58'18"
31+75	865.24	86.211	0°53'33"	95°51'51"
32+00	873.16	87.001	0°53'33"	96°45'24"
32+25	881.08	87.791	0°53'33"	97°38'57"
32+50	889.00	88.581	0°53'33"	98°32'30"
32+75	896.92	89.371	0°53'33"	99°26'03"
33+00	904.84	90.161	0°53'33"	100°19'36"
33+25	912.76	90.951	0°53'33"	101°13'09"
33+50	920.68	91.741	0°53'33"	102°06'42"
33+75	928.60	92.531	0°53'33"	103°00'15"
34+00	936.52	93.321	0°53'33"	103°53'48"
34+25	944.44	94.111	0°53'33"	104°47'21"
34+50	952.36	94.901	0°53'33"	105°40'54"
34+75	960.28	95.691	0°53'33"	106°34'27"
35+00	968.20	96.481	0°53'33"	107°28'00"
35+25	976.12	97.271	0°53'33"	108°21'33"
35+50	984.04	98.061	0°53'33"	109°15'06"
35+75	991.96	98.851	0°53'33"	110°08'39"
36+00	1000.00	99.641	0°53'33"	111°02'12"

E. V. A. V.
 2608 City
 1231.0 Ch. Yb. 163.7 Cur. Yb.



MISSION ROAD
 PROJ. NO. C14-322