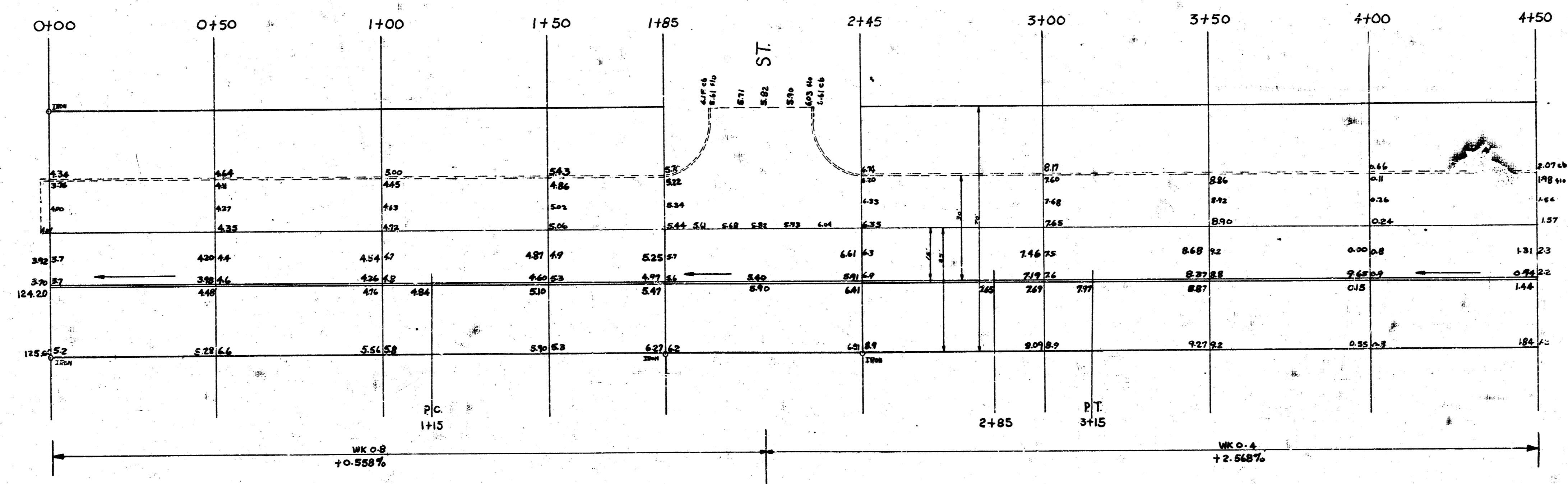
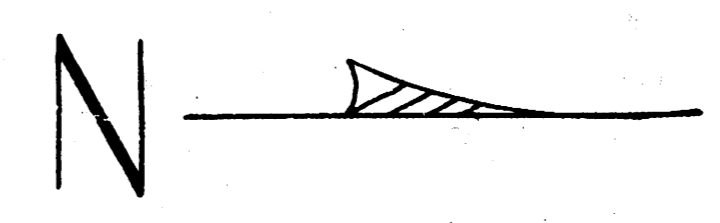


B.M. 124.34 "G" in Globe W curb S and part on Mission Rd. at sta 0+00  
 B.M. 129.55 E Rim MH. on W.I.S. E.S. Woodlawn Approx. 200' SE. of SW  
 Cor. Funston & Woodlawn  
 Sta. on E R - S. to N.

0+235.00 set on W.S.  
 0+000.00 Bay Lincoln Hills 3rd Add.

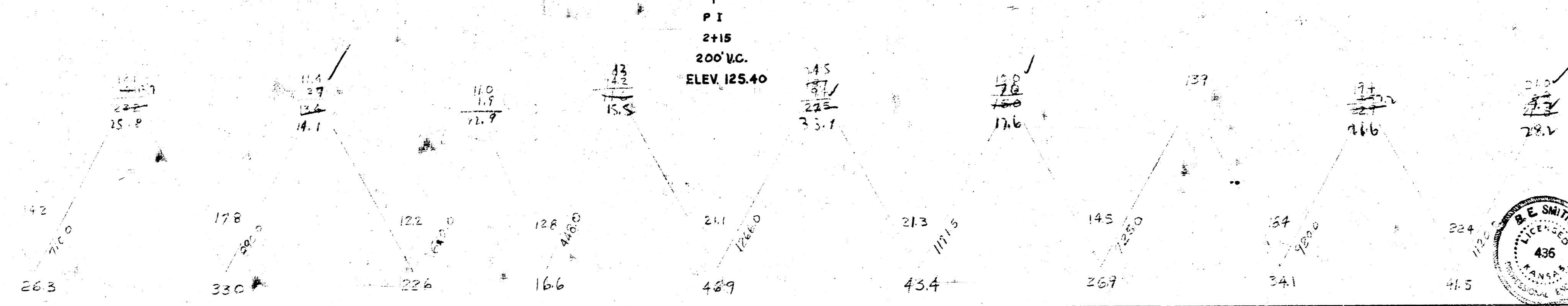
1+085 S.L. Funston

2+445 N.L. Funston



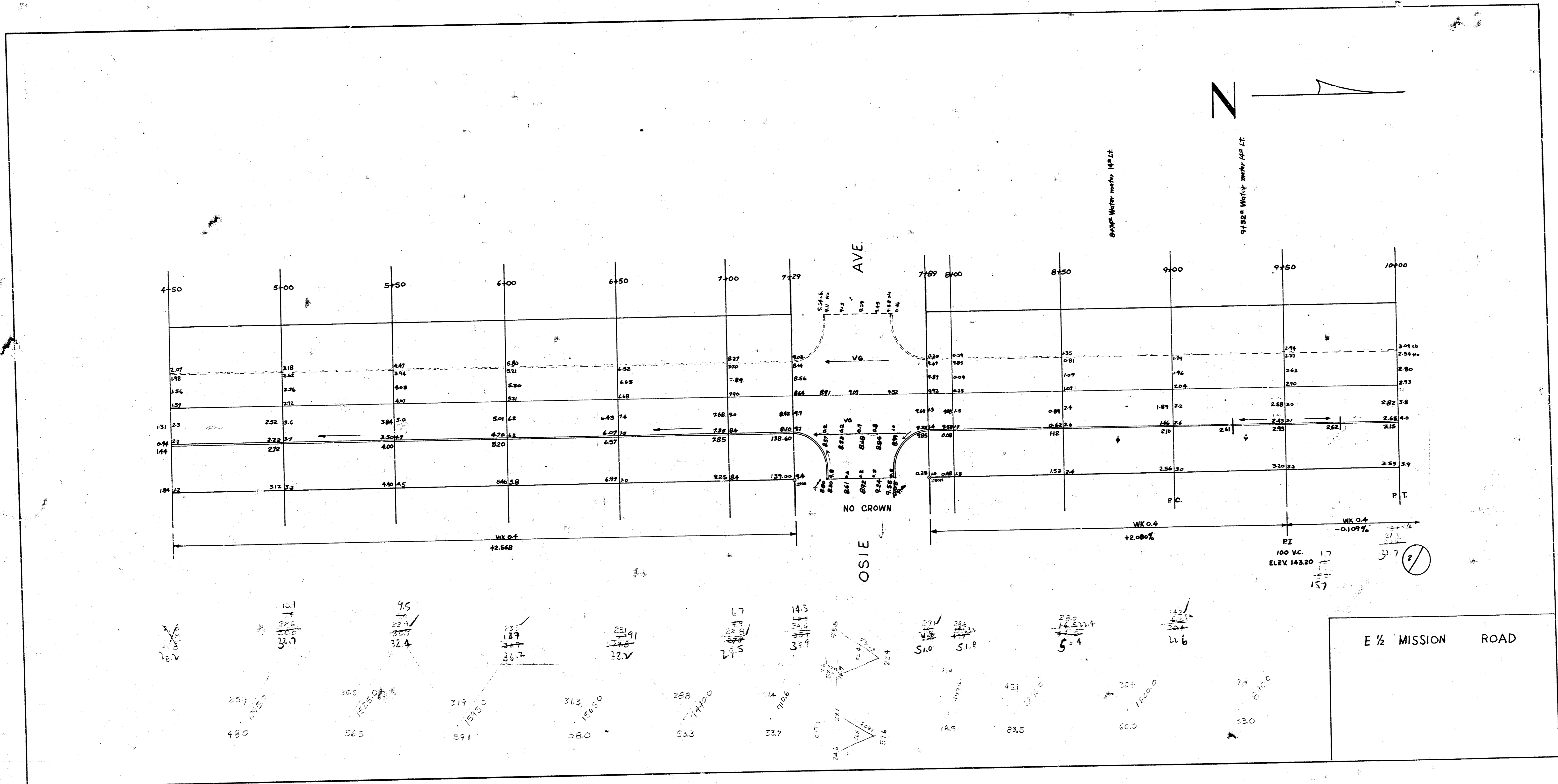
Surveyed by BK JAMES  
 Plan of  
 Ec. w.p.  
 Checked JL

EXPLANATION  
 1" = 10'  
 1" = 10'

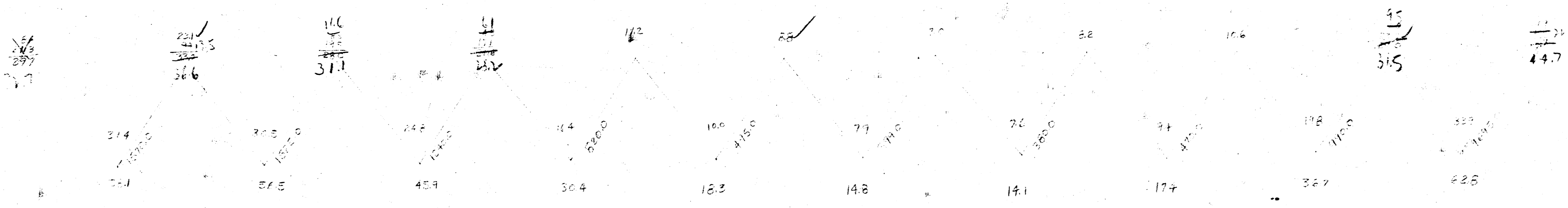
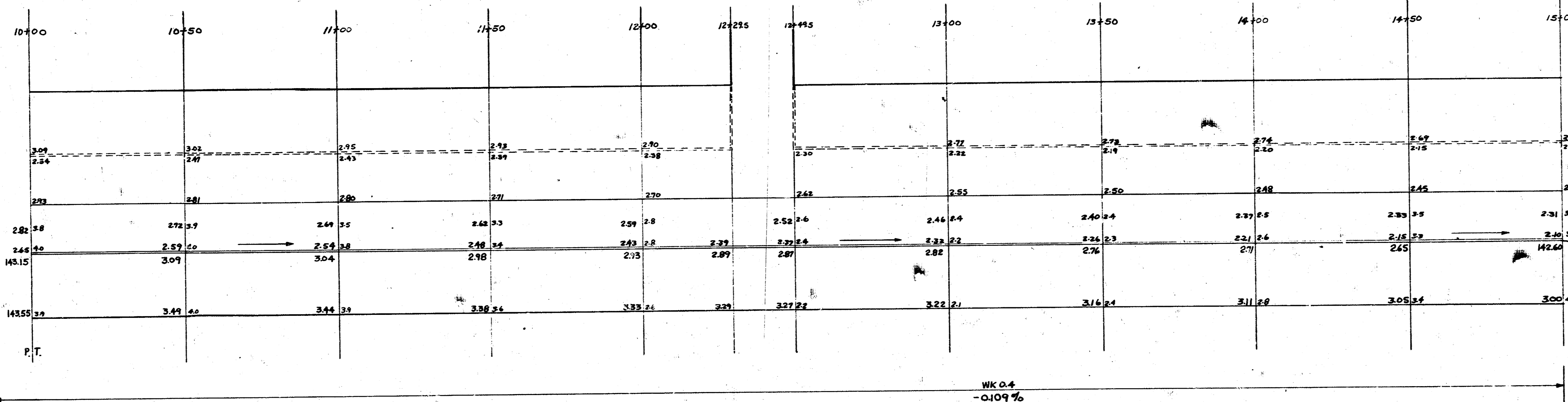
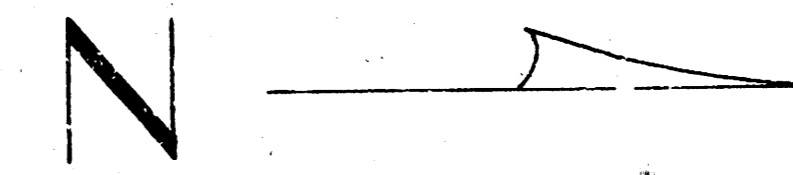


**E 1/2 MISSION ROAD**  
 S.L. HARRY TO S.L. LINCOLN HILLS 3RD ADD.  
 15' CONC. & CB  
 B.E. SMITH CITY ENGINEER  
 APRIL 1954 PROJ. NO. C14-36





BM. 14270 "C" in Globe west curb Mission north radius of drive at sta 14+69



E 1/2 MISSION ROAD