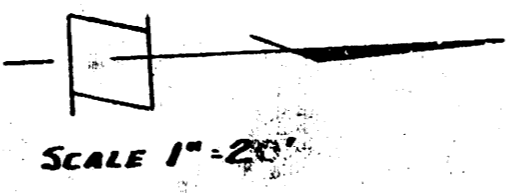


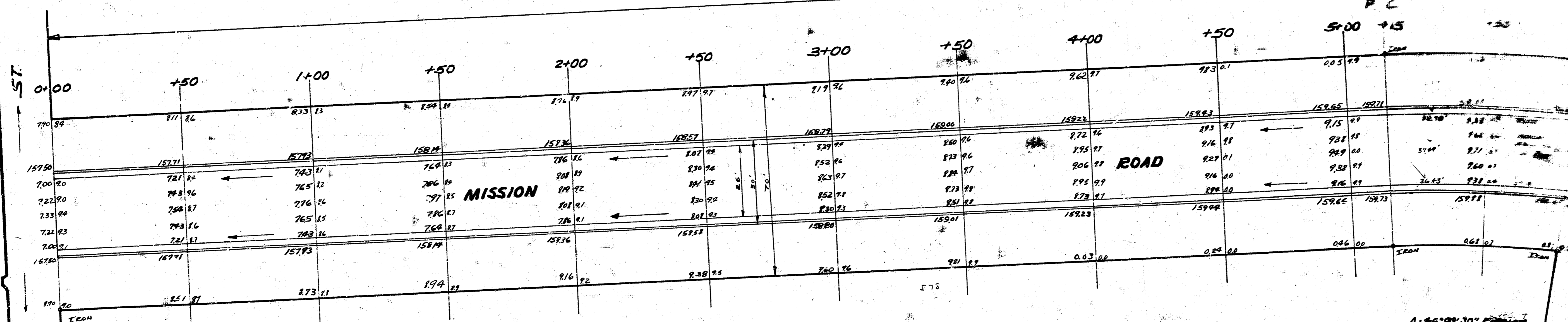
B.M. 16036 E IN RITCHIE N Co. MORRIS EL MISSION ROAD

STATIONING ON E.R.



+0.4292% W.K. 0.4'

P.C.

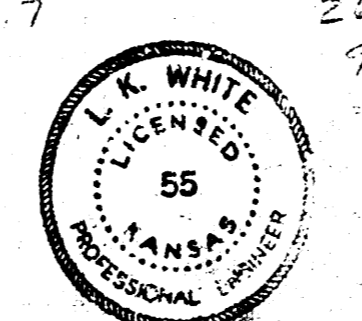
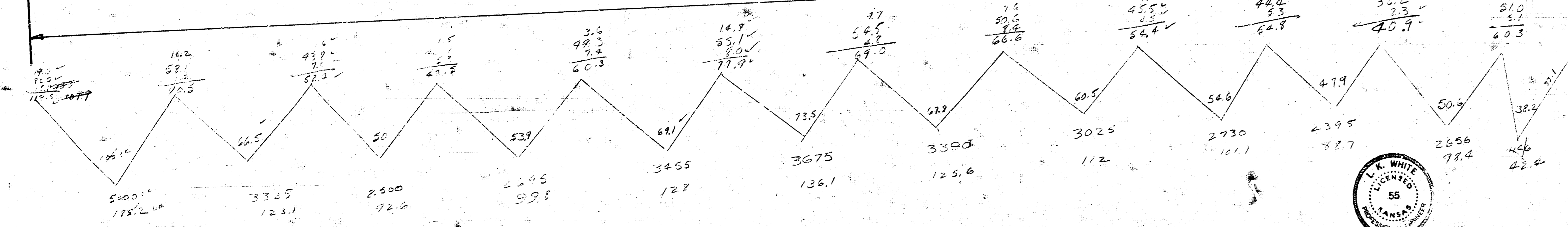


+0.4333% W.K. 0.8'

Δ = 46° 09' 30" E

LINCOLN ST

MORRIS



MISSION ROAD
 SL MORRIS TO NL LINCOLN
 26-2-30A.C.
 CITY OF WICHITA
 LK WHITE CITY ENGINEER
 JAN 1952 PROJ. No. 011-204

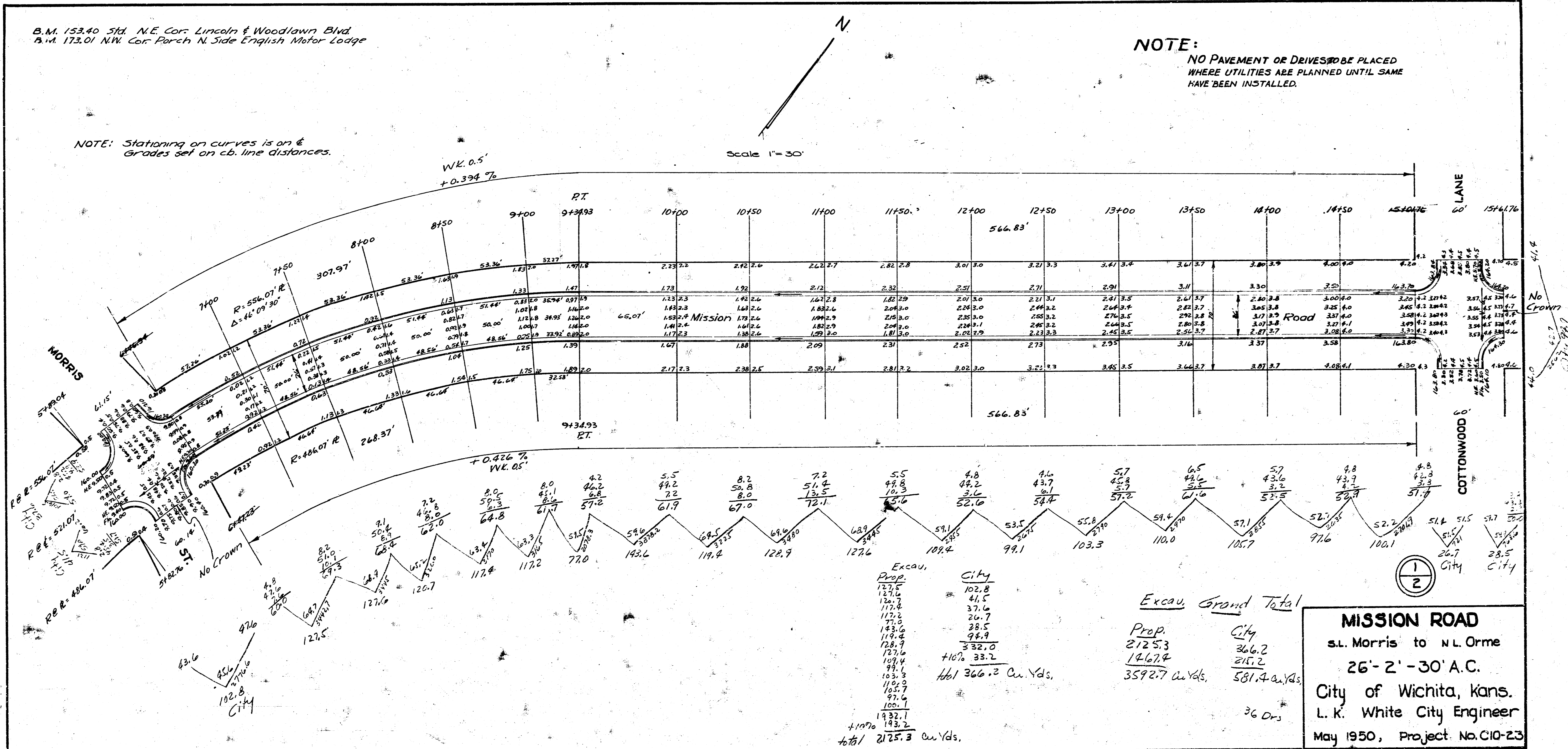
Book K-7

B.M. 153.40 Std. N.E. Cor. Lincoln & Woodlawn Blvd.
B.M. 173.01 NW. Cor. Parsh N. Side English Motor Lodge

NOTE:
NO PAVEMENT OR DRIVES TO BE PLACED
WHERE UTILITIES ARE PLANNED UNTIL SAME
HAVE BEEN INSTALLED.

NOTE: Stationing on curves is on &
Grades set on cb. line distances.

Scale 1" = 30'



MISSION ROAD
S.L. Morris' to N.L. Orme
26'-2'-30" A.C.
City of Wichita, Kans.
L. K. White City Engineer
May 1950, Project No. C10-23

