

THE MOORINGS

S.M. 141.07 "C" IN SOUTH HEADWALL OF CULVERT AT 48TH STREET NORTH AND MERIDIAN AVENUE (CITY OF WICHITA DATUM)

POE & ASSOCIATES OF KANSAS, INC.
CONSULTING ENGINEERS

**STREET IMPROVEMENTS
CITY OF
WICHITA, KANSAS**

COBBLESTONE FROM S. LINE BLK 5 TO S. LINE OF MILRO
DRIFTWOOD CIRCLE FROM W. LINE COBBLESTONE TO AND INCL. CUL-DE-SAC
MILRO CIRCLE FROM W. LINE COBBLESTONE TO AND INCL. CUL-DE-SAC

M.E. LINDEBAK, CITY ENGINEER

PROJECT NO. 472-76-245-80599-000-000-001

SEPTEMBER 1983

SANITARY SEWER LINE AND WATER LINE CONSTRUCTION BENEATH THE PAVING SHALL BE COMPLETED AND ACCEPTED BEFORE PAVEMENT MAY BE PLACED.

INDEX

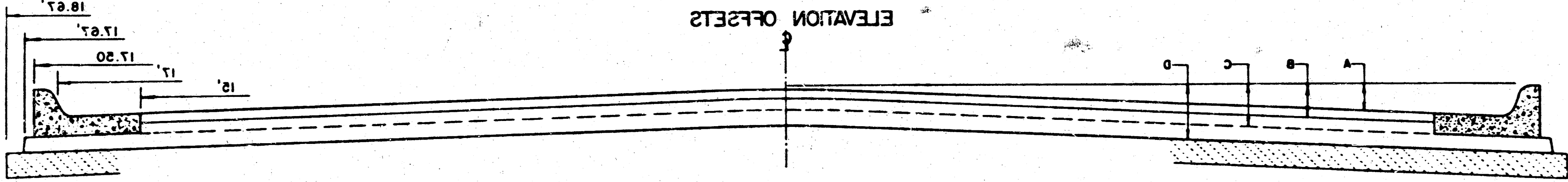
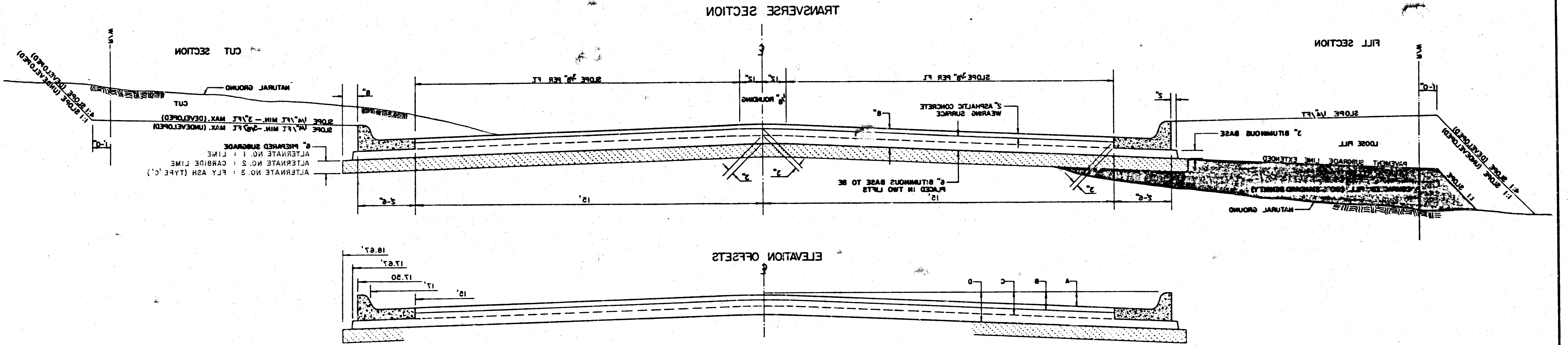
Title Sheet-----	Sheet 1
Typ. 35' Pavement Details----	Sheet 2
Typ. 41' Pavement Details----	Sheet 3
Cobblestone-----	Sheet 4 & 5
Driftwood Circle-----	Sheet 6
Milro Circle-----	Sheet 7
Cross-Sections-----	Sheet 8-11



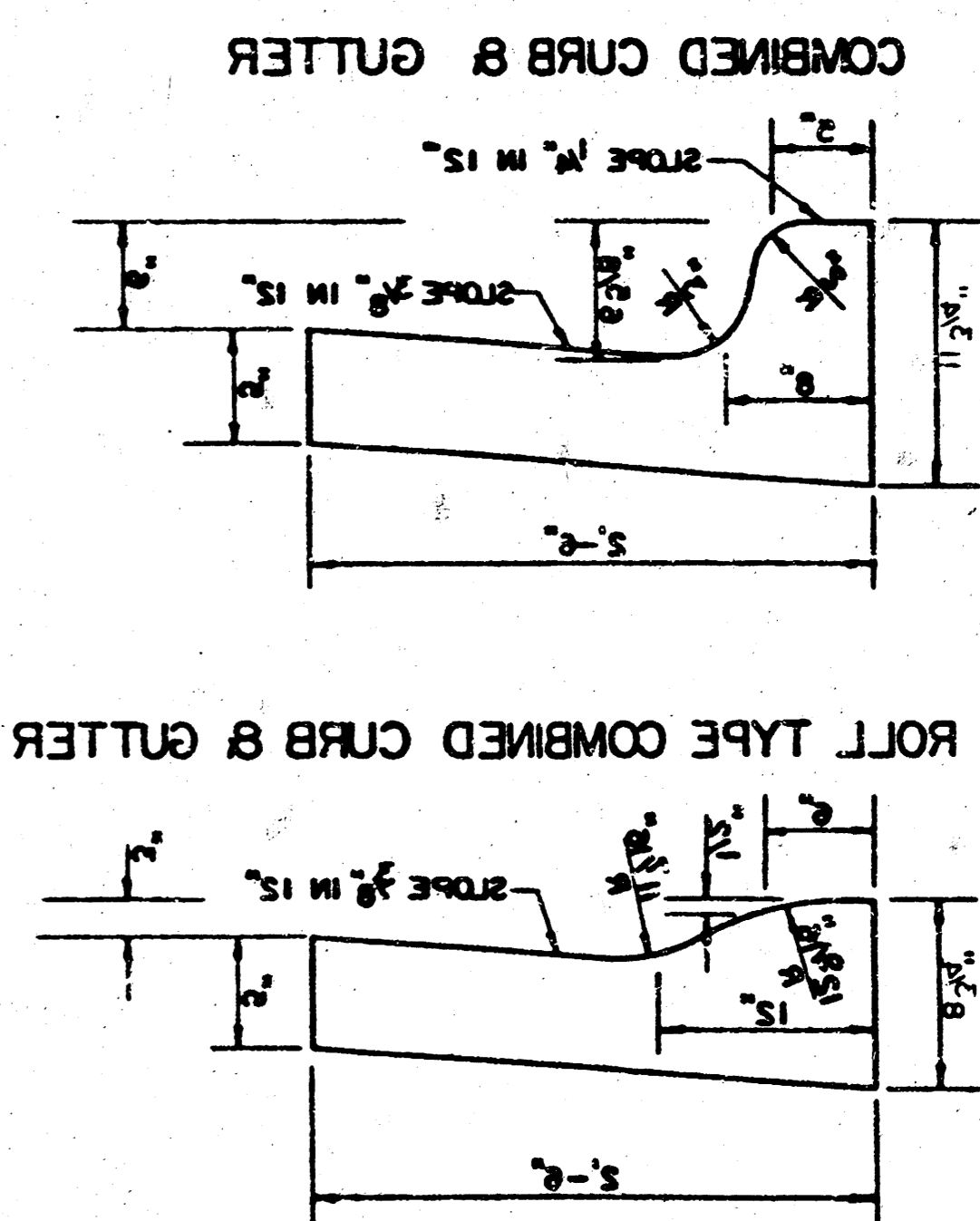
- EXCAVATION OF THE BORROW MATERIAL FROM THE BORROW AREA AND PLACEMENT OF THE BORROW ON THE PROJECT SHALL BE PAID AS CURB YARD EXCAVATION. THE QUANTITY OF THIS REMOVAL SHALL BE DETERMINED FROM ORIGINAL AND FINAL CROSS-SECTIONS OF THE ROADWAY.
- NO DELIVERIES TO BE CONSIDERED AS PART OF THIS PROJECT.

THE CONTRACTOR SHALL BE RESPONSIBLE FOR PREPARING PROPERTY IRONS. THE CONTRACTOR SHALL BE REQUIRED TO REESTABLISH ANY PROPERTY IRONS WHICH ARE DAMAGED OR DESTROYED BY HIS CONSTRUCTION OPERATIONS. SUCH IRONS SHALL BE RE-ESTABLISHED BY A LICENSED LAND SURVEYOR OR A LICENSED PROFESSIONAL ENGINEER IN ACCORDANCE WITH STATE LAWS.

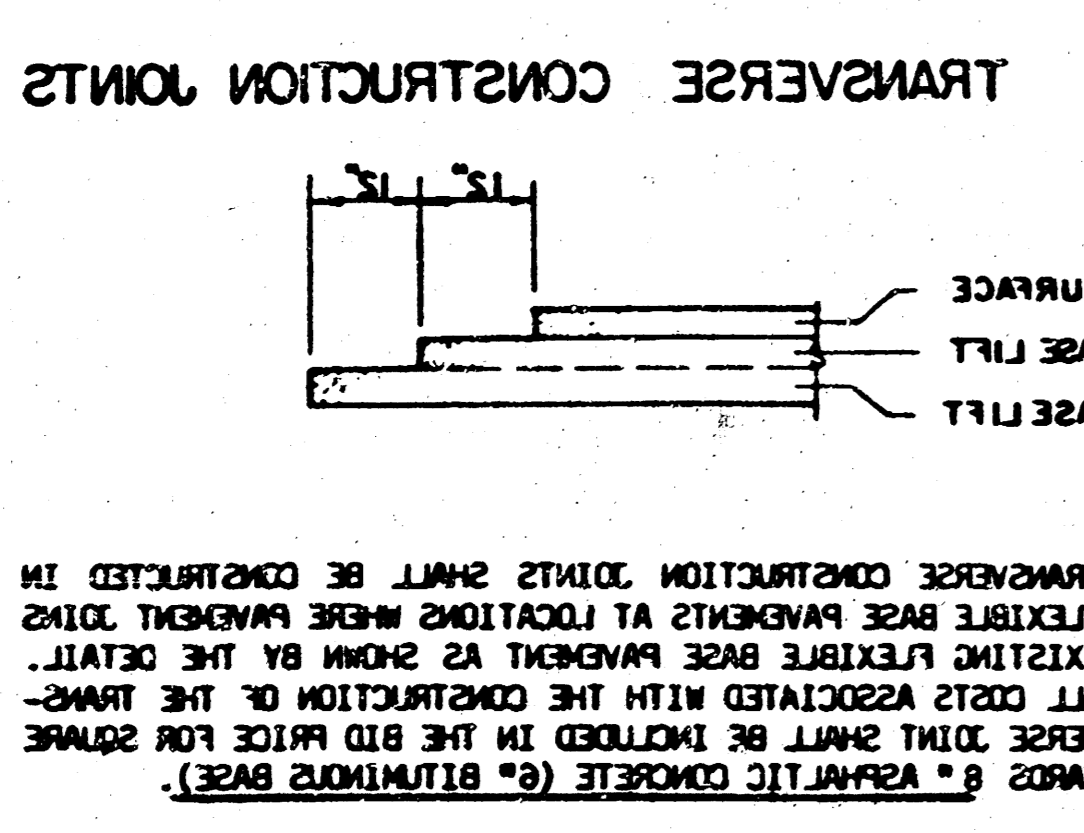
TYPICAL 35' PAVEMENT DETAILS



	0'	1'	2'	3'	4'	5'	6'	8'	10'	12'	14'	15'	17'	17.5'	17.87'	18.17'
TOP OF CURBS TO TOP OF SUBGRADE	0.11	0.12	0.13	0.14	0.15	0.16	0.17	0.18	0.19	0.20	0.21	0.22	0.23	0.24	0.25	0.26
TOP OF LOWER BASE LFT	0.48	0.49	0.50	0.51	0.52	0.53	0.54	0.55	0.56	0.57	0.58	0.59	0.60	0.61	0.62	0.63
TOP OF CURBS TO TOP OF LOWER BASE LFT	0.37	0.38	0.39	0.40	0.41	0.42	0.43	0.44	0.45	0.46	0.47	0.48	0.49	0.50	0.51	0.52
TOP OF UPPER BASE LFT	0.51	0.52	0.53	0.54	0.55	0.56	0.57	0.58	0.59	0.60	0.61	0.62	0.63	0.64	0.65	0.66
TOP OF CURBS TO TOP OF UPPER BASE LFT	0.40	0.41	0.42	0.43	0.44	0.45	0.46	0.47	0.48	0.49	0.50	0.51	0.52	0.53	0.54	0.55
TOP OF CURBS TO TOP OF SURFACE LFT	0.04	0.05	0.06	0.07	0.08	0.09	0.10	0.11	0.12	0.13	0.14	0.15	0.16	0.17	0.18	0.19
A TOP OF CURBS TO TOP OF SURFACE LFT	0.04	0.05	0.06	0.07	0.08	0.09	0.10	0.11	0.12	0.13	0.14	0.15	0.16	0.17	0.18	0.19

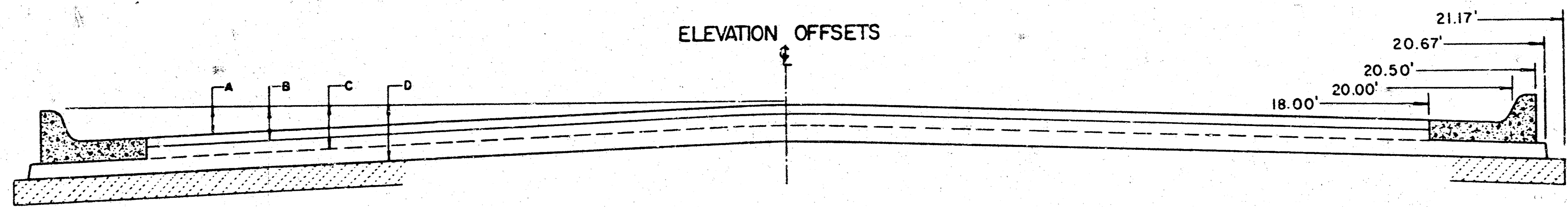
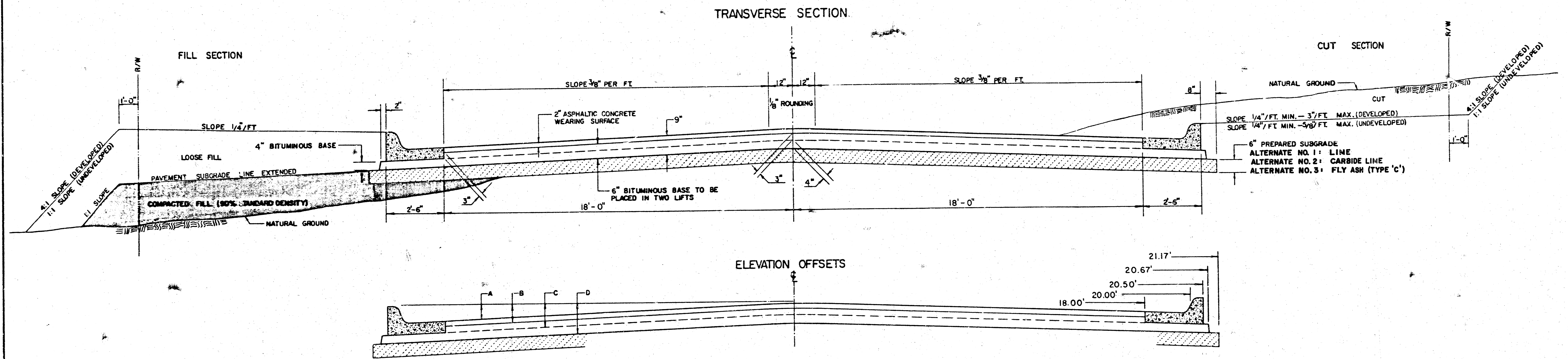


- ### GENERAL NOTES
- 1) THE ASPHALTIC CONCRETE PAVEMENT BETWEEN THE COMBINED CURB AND GUTTER SHALL BE PAID AS SHOWN YARDS OF 8" ASPHALTIC CONCRETE (6" BITUMINOUS BASE).
 - 2) THE BITUMINOUS BASE UNDER AND BEHIND THE COMBINED CURB AND GUTTER SHALL BE PAID AS SHOWN YARDS OF 7" BITUMINOUS BASE.
 - 3) A TOP COAT OF ENRICHED ASPHALT (20-10 OR 22-10) SHALL BE APPLIED AT AN APPLICATION RATE OF 0.03 GALLONS PER SQUARE YARD BETWEEN EACH FIFTY (50) FEET OF ASPHALTIC MATERIAL.
 - 4) BITUMINOUS BASE AND ASPHALTIC CONCRETE WEARING SURFACE SHALL BE PLACED WITH A RANDOM MACHINE HAVING AUTOMATIC CONTROLS FOR THE MIX AND GRADE.
 - 5) CONSTRUCTION JOINTS IN EACH LIFT SHALL BE STRENGTHENED A MINIMUM DISTANCE OF ONE (1) FOOT FROM JOINTS IN PRECEDING LIFTS AND PLACED SO THAT A JOINT WILL BE CONSTRUCTED ON THE CENTERLINE OF THE TOP LIFT.
 - 6) CONTRACTOR TO BID ONLY THE SUBGRADE TREATMENT ALTERNATE WHEN ALTERNATE NOTES ARE PROVIDED IN THE SPECIFICATIONS AND COMMENT THE ALTERNATE PROJECT.

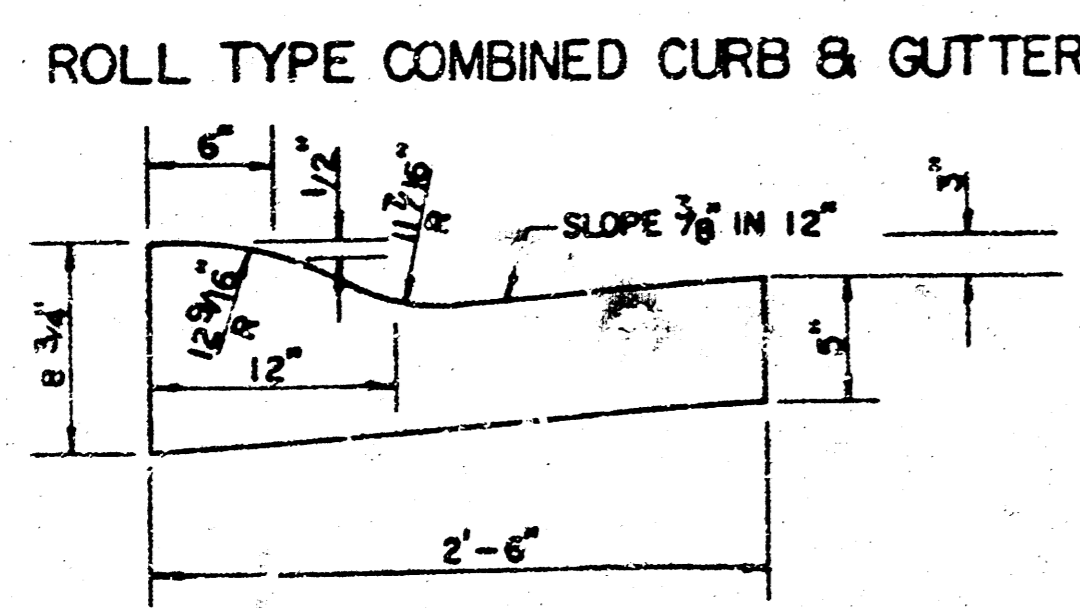
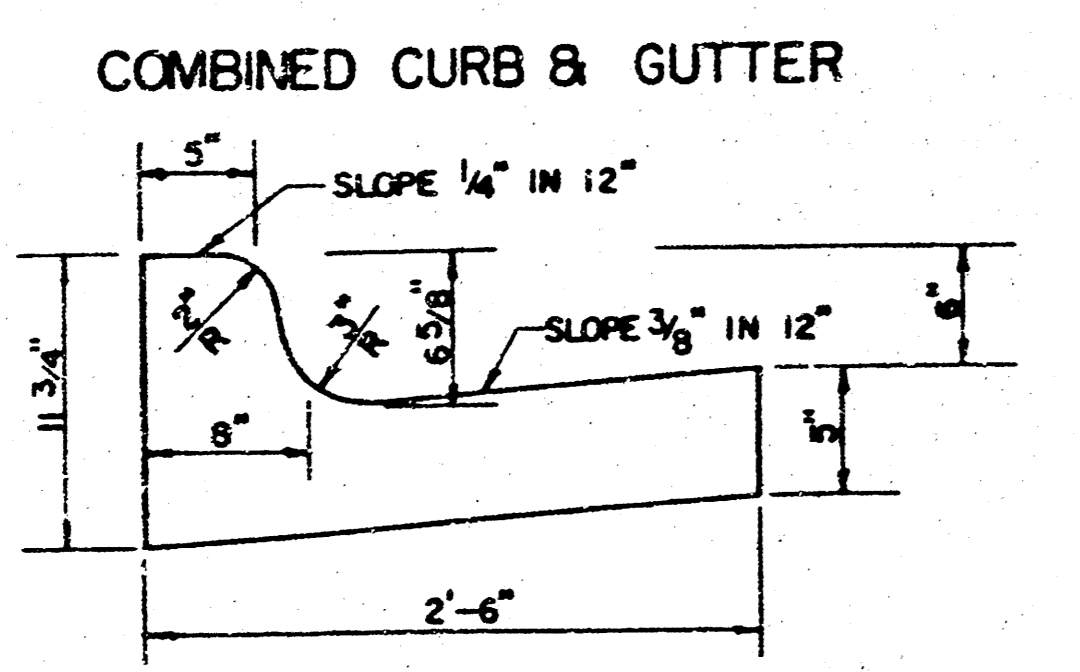


8 INCH RESIDENTIAL ASPHALTIC CONCRETE PAVEMENT WITH 6 INCH BITUMINOUS BASE
CITY OF WICHITA, KANSAS
 PROJECT NUMBER
 475-YE-42-80222-000-000-001
 SHEET 5 OF 11

TYPICAL 41' PAVEMENT DETAILS



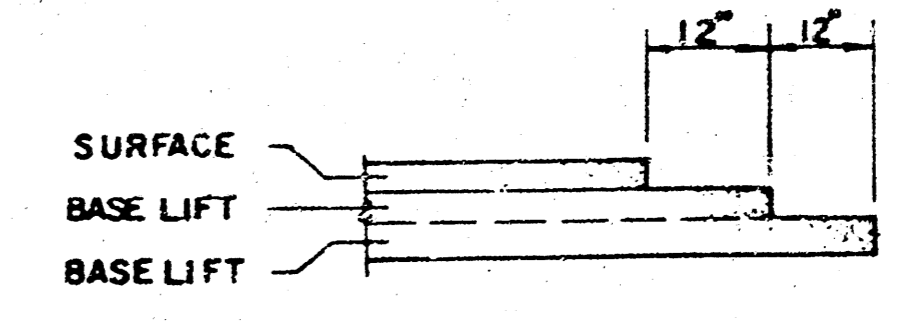
	DISTANCE FROM CENTERLINE (LT. & RT.)													
	0	2	4	6	8	10	12	14	16	18	20	20.5	20.67	21.17
A: TOP OF CURBS TO TOP OF SURFACE LIFT	-.05	-.01	.05	.11	.18	.24	.30	.36	.43	.49	—	—	—	—
B: TOP OF CURBS TO TOP OF UPPER BASE LIFT	.11	.16	.22	.28	.34	.40	.47	.53	.59	.65	—	—	—	—
C: TOP OF CURBS TO TOP OF LOWER BASE LIFT	.36	.41	.47	.53	.59	.65	.72	.78	.84	.90	.97	.98	.99	—
D: TOP OF CURBS TO TOP OF SUBGRADE	.69	.74	.80	.86	.92	.98	1.05	1.11	1.17	1.23	1.30	1.31	1.32	1.33



GENERAL NOTES

- 1) THE ASPHALTIC CONCRETE PAVEMENT BETWEEN THE COMBINED CURB AND GUTTER SHALL BE PAID AS SQUARE YARDS OF 9" ASPHALTIC CONCRETE (7" BITUMINOUS BASE).
- 2) THE BITUMINOUS BASE UNDER AND BEHIND THE COMBINED CURB AND GUTTER SHALL BE PAID AS SQUARE YARDS OF 4" BITUMINOUS BASE.
- 3) A TACK COAT OF EMULSIFIED ASPHALT (SC-1H OR CSS-1H) SHALL BE APPLIED AT AN APPROXIMATE RATE OF 0.05 GALLONS PER SQUARE YARD BETWEEN EACH LIFT OF ASPHALTIC MATERIAL.
- 4) BITUMINOUS BASE AND ASPHALTIC CONCRETE WEARING SURFACE SHALL BE PLACED WITH A LAYDOWN MACHINE HAVING AUTOMATIC CONTROLS FOR LINE AND GRADE.
- 5) CONSTRUCTION JOINTS IN EACH LIFT SHALL BE STAGGERED A MINIMUM DISTANCE OF ONE (1) FOOT FROM JOINTS IN PRECEDING LIFTS AND PLACED SO THAT A JOINT WILL BE CONSTRUCTED ON THE CENTERLINE OF THE TOP LIFT.
- 6) CONTRACTOR TO BID ONLY ONE SUBGRADE TREATMENT ALTERNATE WHEN ALTERNATES ARE PROVIDED IN THE PROPOSAL AND CONTRACT. THE ALTERNATE CHOSEN BY THE SUCCESSFUL BIDDER SHALL BE USED IN CONSTRUCTING THIS PROJECT.

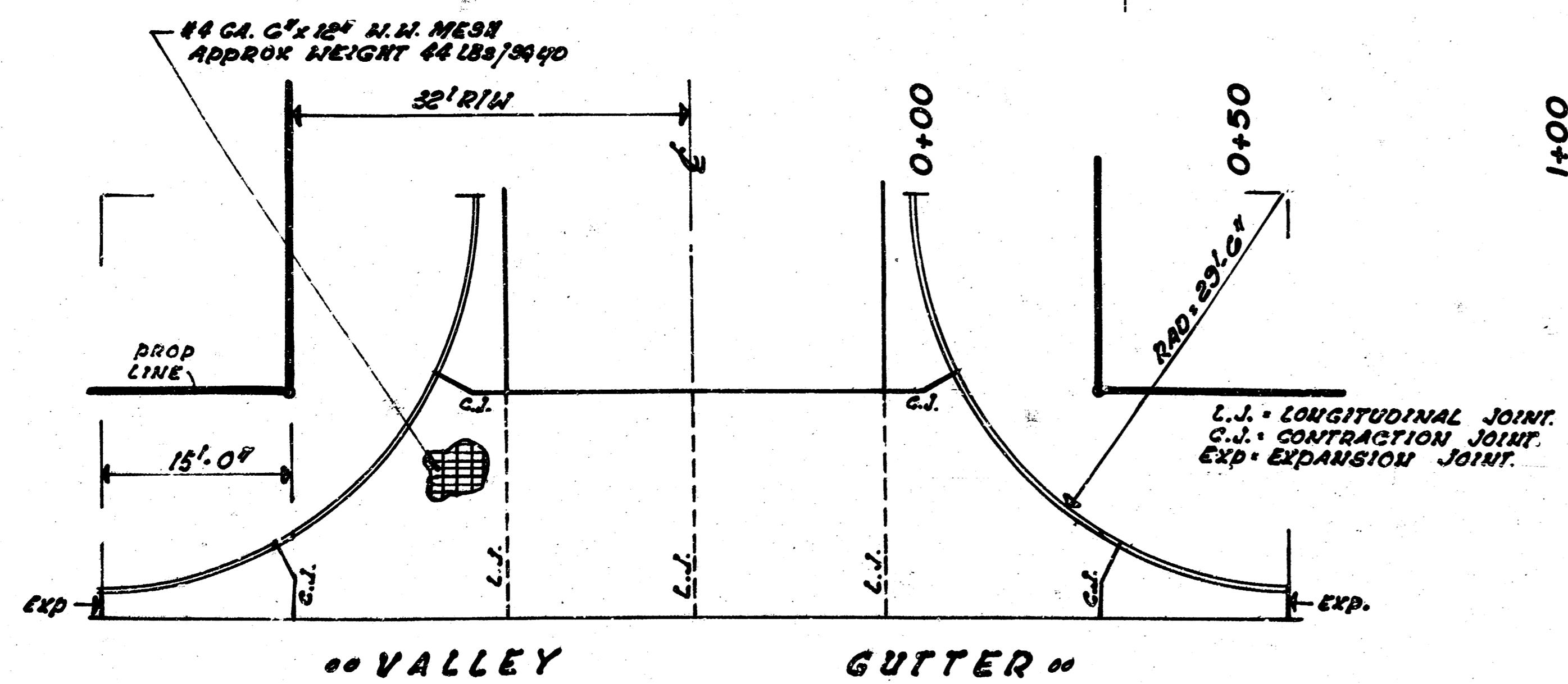
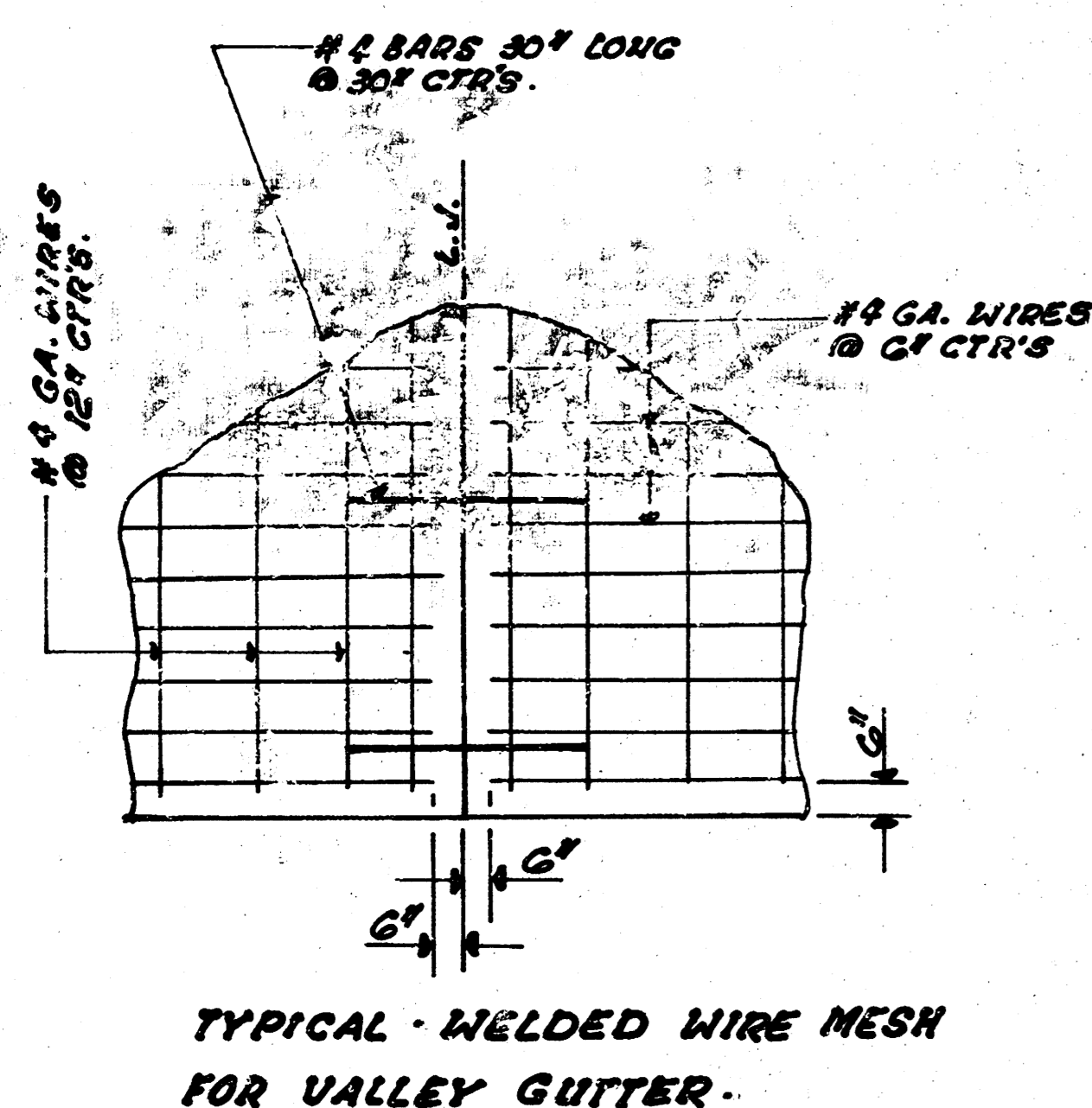
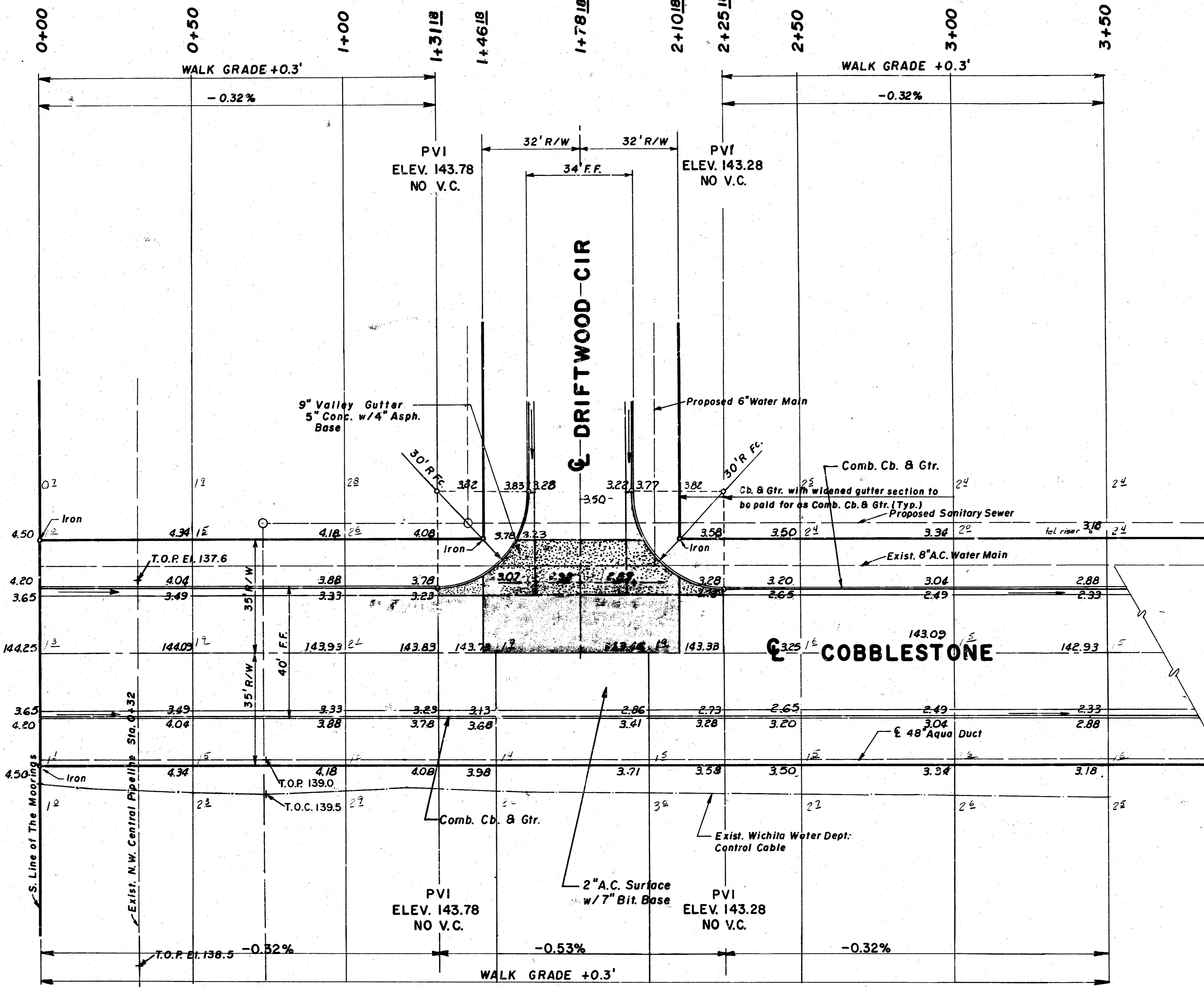
TRANSVERSE CONSTRUCTION JOINTS



TRANSVERSE CONSTRUCTION JOINTS SHALL BE CONSTRUCTED IN FLEXIBLE BASE PAVEMENTS AT LOCATIONS WHERE PAVEMENT JOINS EXISTING FLEXIBLE BASE PAVEMENT AS SHOWN BY THE DETAIL. ALL COSTS ASSOCIATED WITH THE CONSTRUCTION OF THE TRANSVERSE JOINT SHALL BE INCLUDED IN THE BID PRICE FOR SQUARE YARDS 9" ASPHALTIC CONCRETE (7" BITUMINOUS BASE).

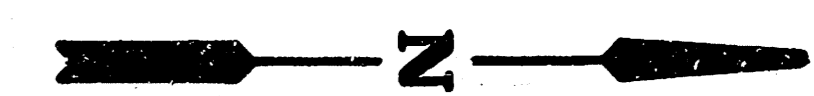
9 INCH RESIDENTIAL ASPHALTIC CONCRETE PAVEMENT WITH 7 INCH BITUMINOUS BASE
 CITY OF WICHITA, KANSAS
 PROJECT NUMBER
 472-76-245-80599-000-000-001

B.M. Cut in South Headwall of Culvert at 45th and Meridian Elevation 141.07 City Datum



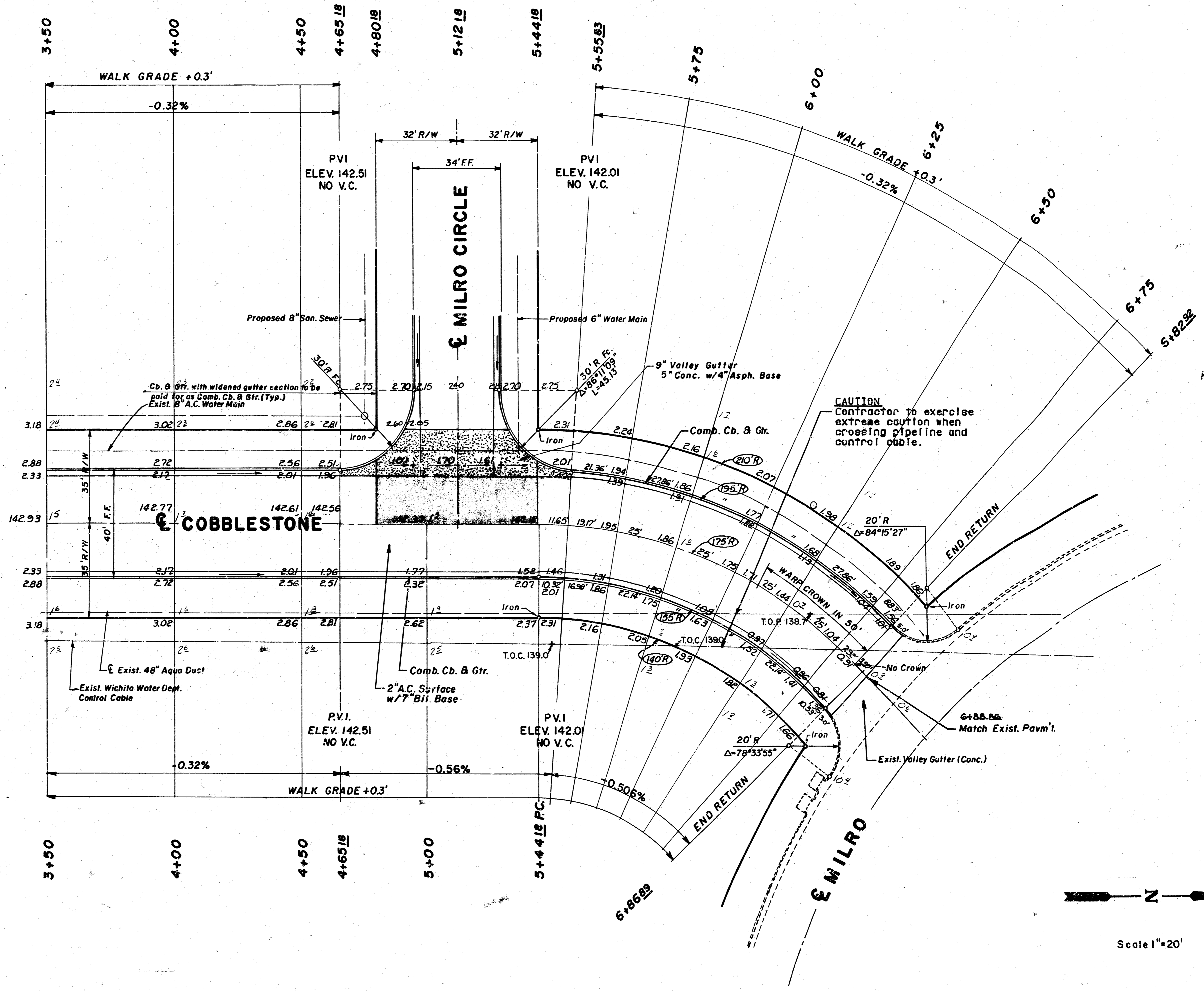
EXCAVATION		EXCAVATION FROM BORROW AREA		COMPACTED FILL	
CITY	PROPERTY	PROPERTY	CITY	PROPERTY	
+10X	20.4 C.Y.	+10X	379.1 C.Y.	+10X	21.3 C.Y.
	2.0 C.Y.		37.9 C.Y.		2.1 C.Y.
	22.4 C.Y.		417.0 C.Y.		23.4 C.Y.
		+10X	2540.3 C.Y.		438.5 C.Y.
			254.0 C.Y.		43.8 C.Y.
			2794.3 C.Y.		482.3 C.Y.

TOTAL MANIPULATION 7794.2 Sq. Yds.



Scale 1"=20'

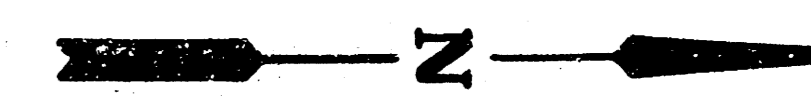
PROJECT DESCRIPTION
COBBLESTONE
 PROJECT NUMBER
 472 76 248 805 99 000 000 001



$\Delta = 46^\circ 43' 32''$ $R = 175.00'$ $T = 75.59'$ $L = 122.71'$ $LC = 138.78'$
 CURVE DATA BASED ON ϵ RADIUS $\frac{1}{2} = 23^\circ 21' 46''$

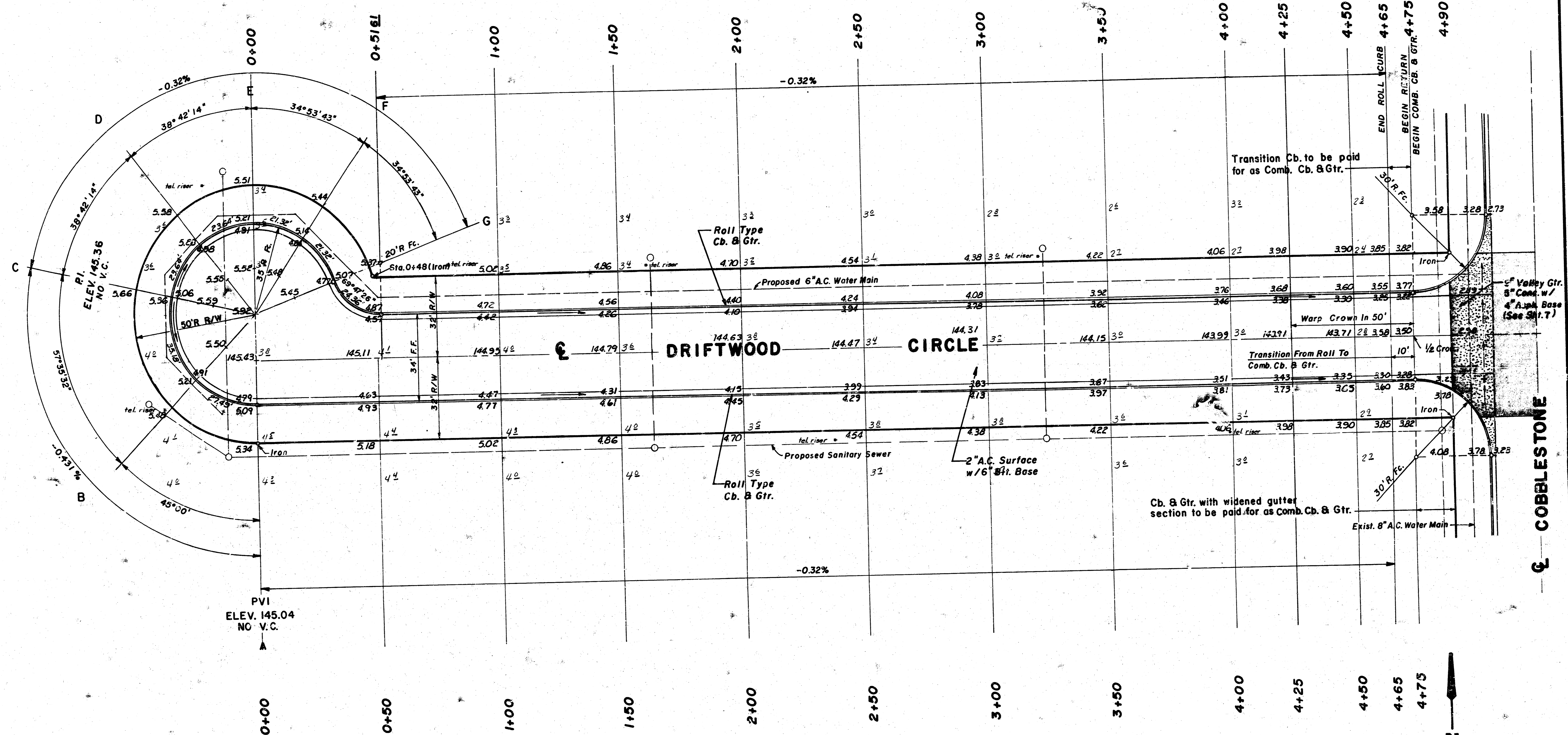
STA.	ϵ ARC	CHORD	LENGTH	OFF LT. CB	ϵ	OFF RT. CB	DEFLECTION	TOTAL DEFLECTION
5+44.18								
5+55.83	11.65	13.51	11.65	3.78			1°54'28"	1°54'28"
5+75	19.17	22.23	19.16	16.09			3°08'17"	5°02'43"
6+00	25	28.98	24.98	20.98			4°05'34"	9°08'17"
6+25	25	28.98	24.98	20.98			4°05'34"	13°13'51"
6+50	25	28.98	24.98	20.98			4°05'34"	17°19'25"
6+75	25	28.98	24.98	20.98			4°05'34"	21°24'59"
6+82.82	7.92	9.19	7.92	6.65			1°17'47"	22°42'46"
6+86.89	3.97	4.61	3.97	3.34			0°39'00"	23°21'46"

Def./Ft. = 1/1637022272



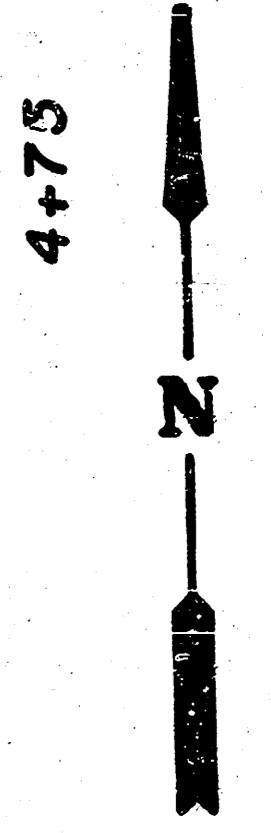
Scale 1"=20'

PROJECT DESCRIPTION
COBBLESTONE
PROJECT NUMBER
472 76 246 80699 000 000 001



INTERSECTION QUANTITIES

128.0	S.Y. 9" ASPHALT CONC. PAVEMENT (6" BITUMIOUS BASE)
20.2	L.F. INTERGRAL CURB
0	C.Y. EXCAVATION
27.5	C.Y. COMPACTED FILL
26.5	S.Y. MANIPULATION
10.0	TONS LIME OR CEMENT
10.0	S.Y. V.G. 5" CONCRETE AND 4" ASPHALTIC CONCRETE BASE

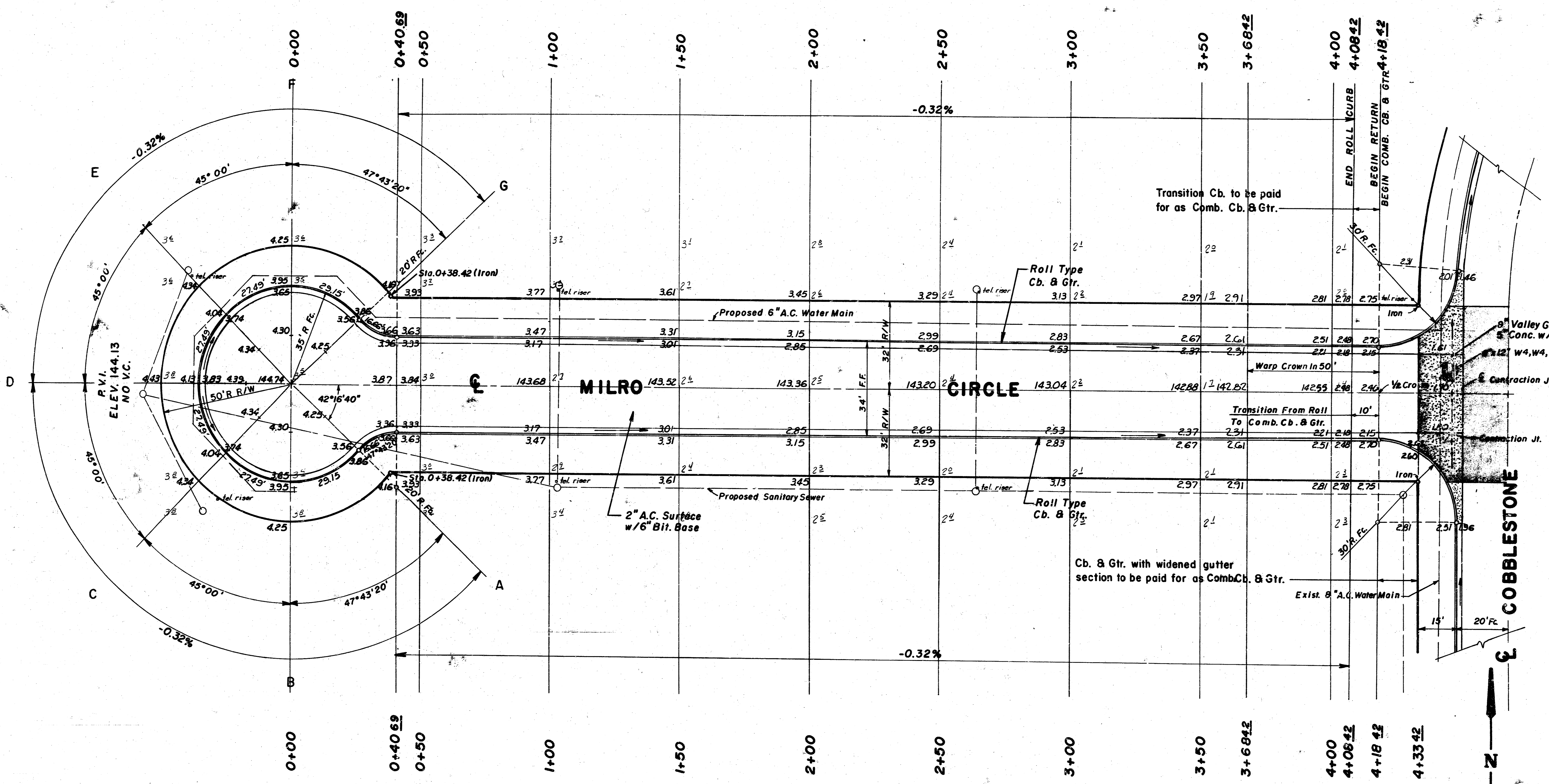


Scale 1" = 20'

PROJECT DESCRIPTION
DRIFTWOOD CIRCLE
 PROJECT NUMBER
 472 76 246 80599 000 000 001

COBBLESTONE

NOTE:
PLACE 30# No. 4 BARS, 30" O.C.
ALONG A CONTRACTION JOINT
IN CONCRETE VALLEY GUTTER.



INTERSECTION QUANTITIES

125.0	S.Y.	3\"/>
32.5	L.F.	INTERNAL CURB
30.8	C.Y.	EXCAVATION
236.3	C.Y.	COMPACTED FILL
236.3	S.Y.	MANIPULATION
	TONS	LIME OR CEMENT
106.0	S.Y.	V.G. 5\"/>

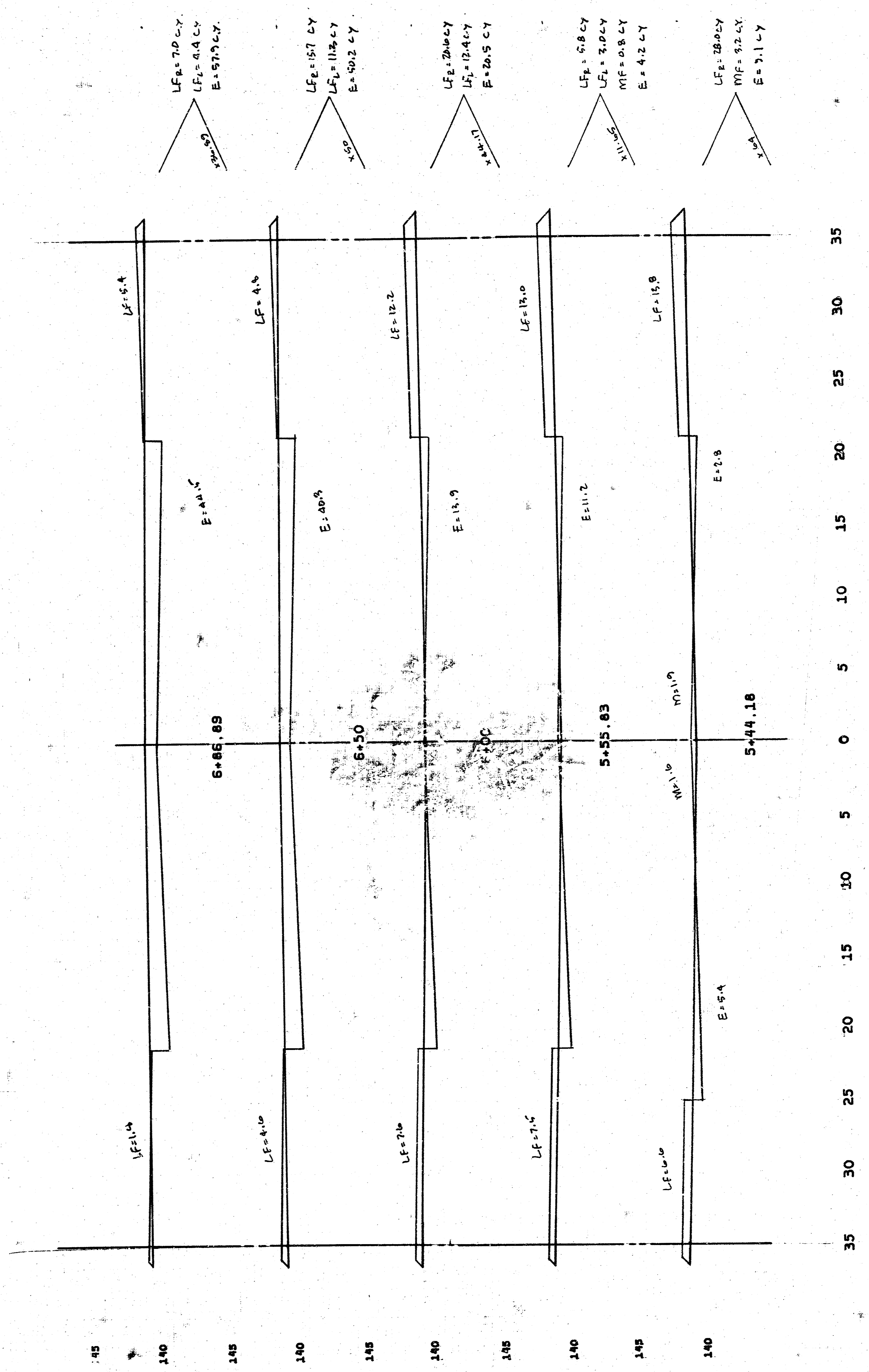
Scale 1"=20'

PROJECT DESCRIPTION

MILRO CIRCLE

PROJECT NUMBER

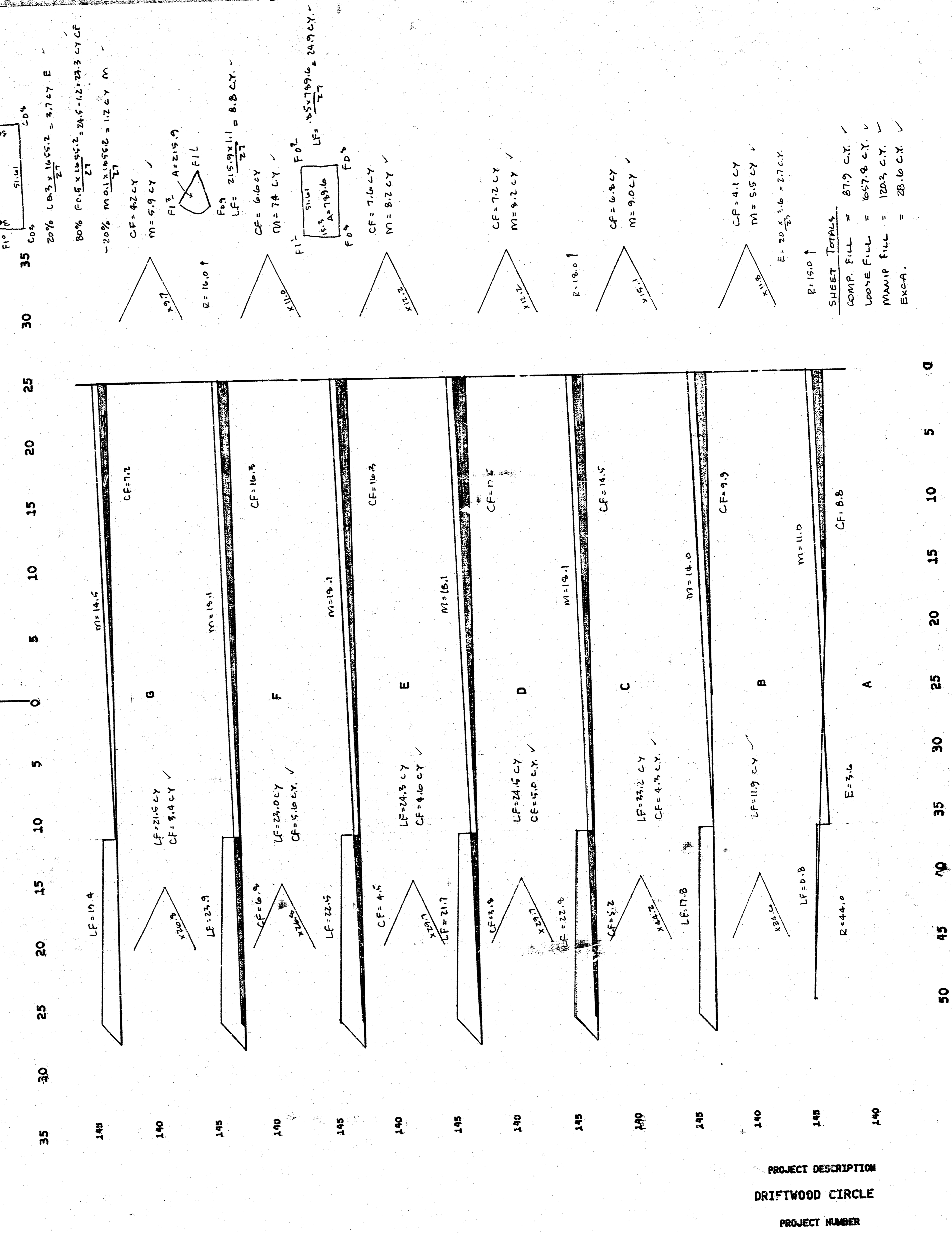
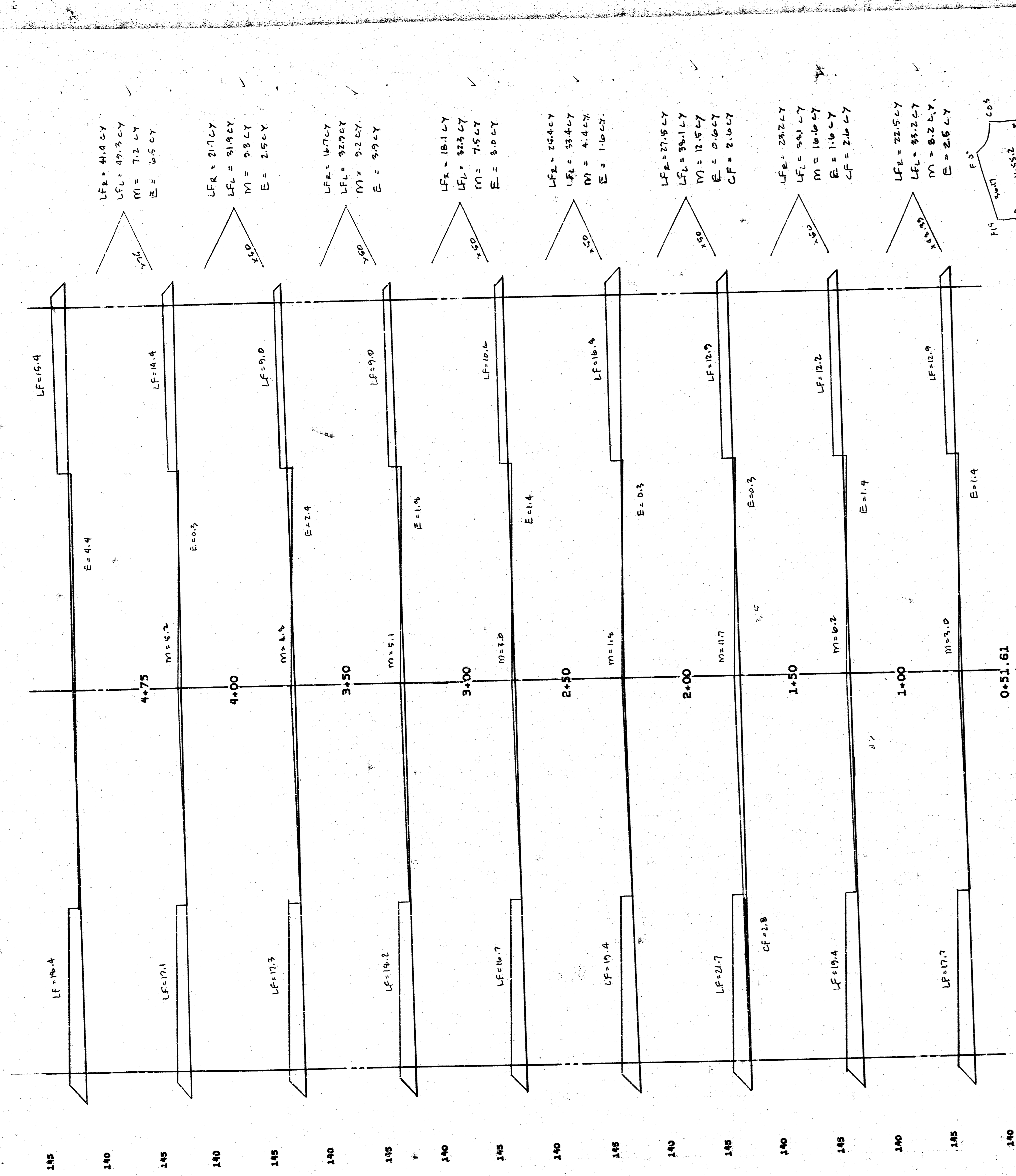
472 78 245 80599 000 000 001



SHEET TOTALS

LOOSE FILL 108.2 CY
 MAINT. FILL 4.0 CY
 EXCA. 141.9 CY

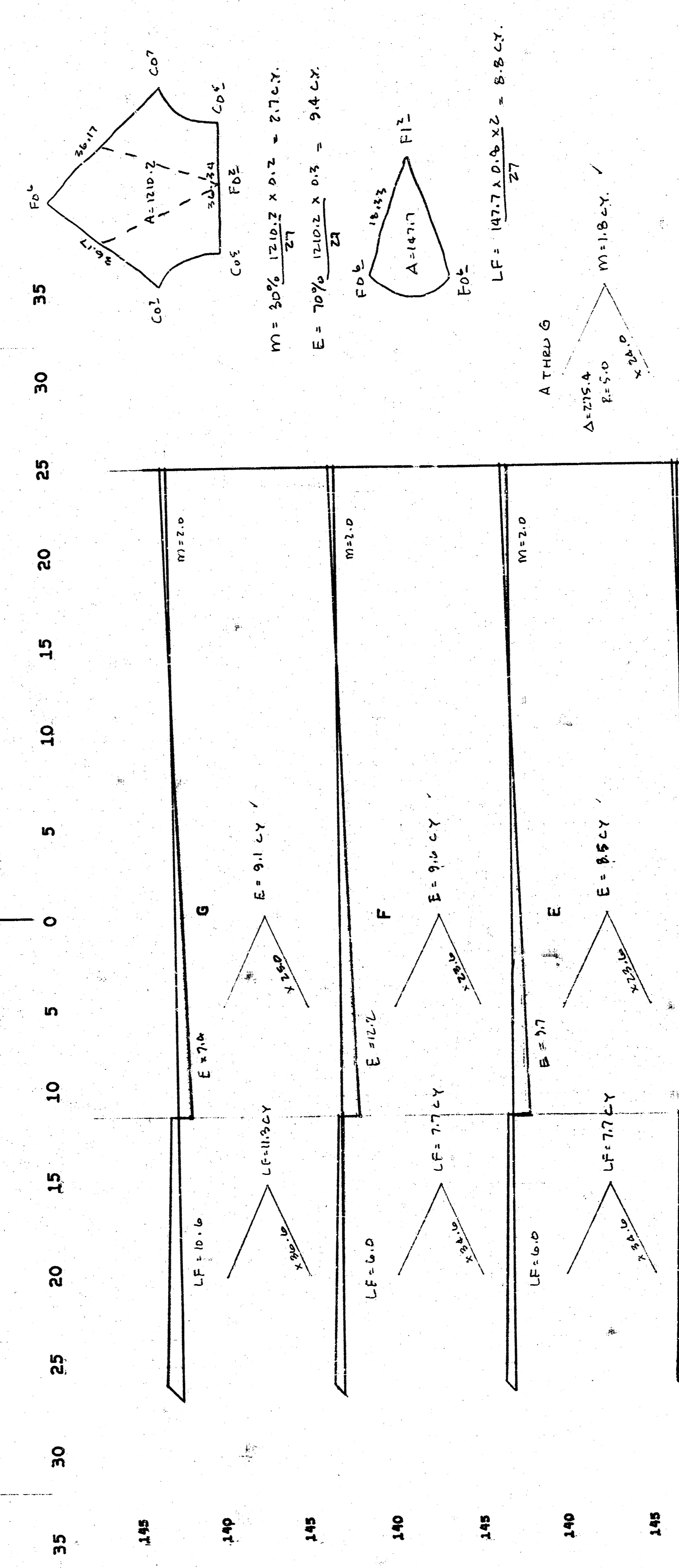
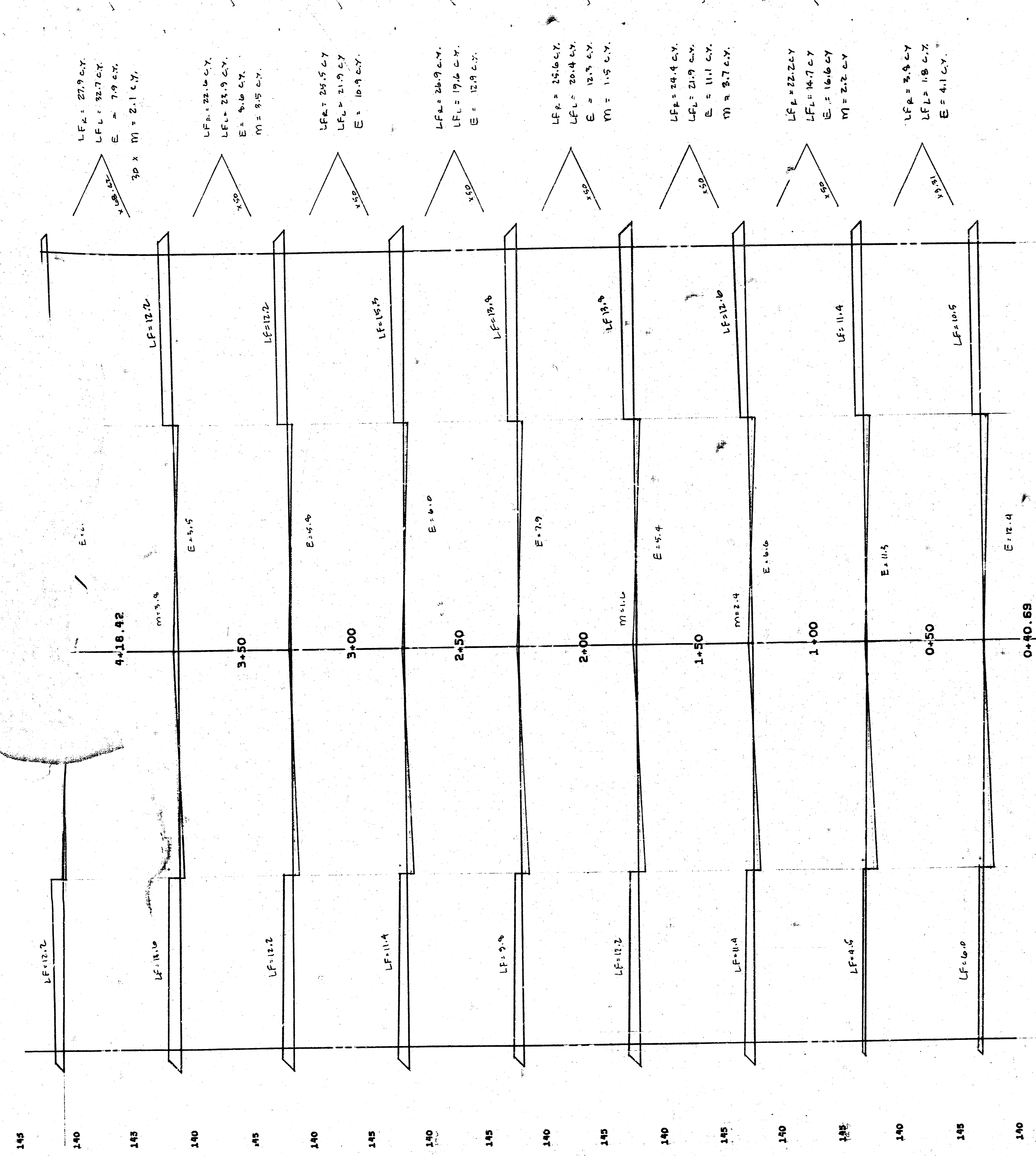
PROJECT DESCRIPTION
 COBBLESTONE
 PROJECT NUMBER
 472-76-245-80588-000-000-001



PROJECT DESCRIPTION
 DRIFTWOOD CIRCLE
 PROJECT NUMBER
 472-76-245-80589-000-000-001

10/11

SHEET TOTALS
 COMP. FILL = 87.9 C.Y. ✓
 LOSS FILL = 647.8 C.Y. ✓
 MAINT. FILL = 120.3 C.Y. ✓
 EXCA. = 28.6 C.Y. ✓



SWEET TABLES
 Loose Fill 592.5 CY
 Major Fill 17.5 CY
 Exca. 151.1 CY

PROJECT DESCRIPTION
 MILRO. CIRCLE
 PROJECT NUMBER
 472-76-245-80388-000-000-001

44 5 4 11 4 00