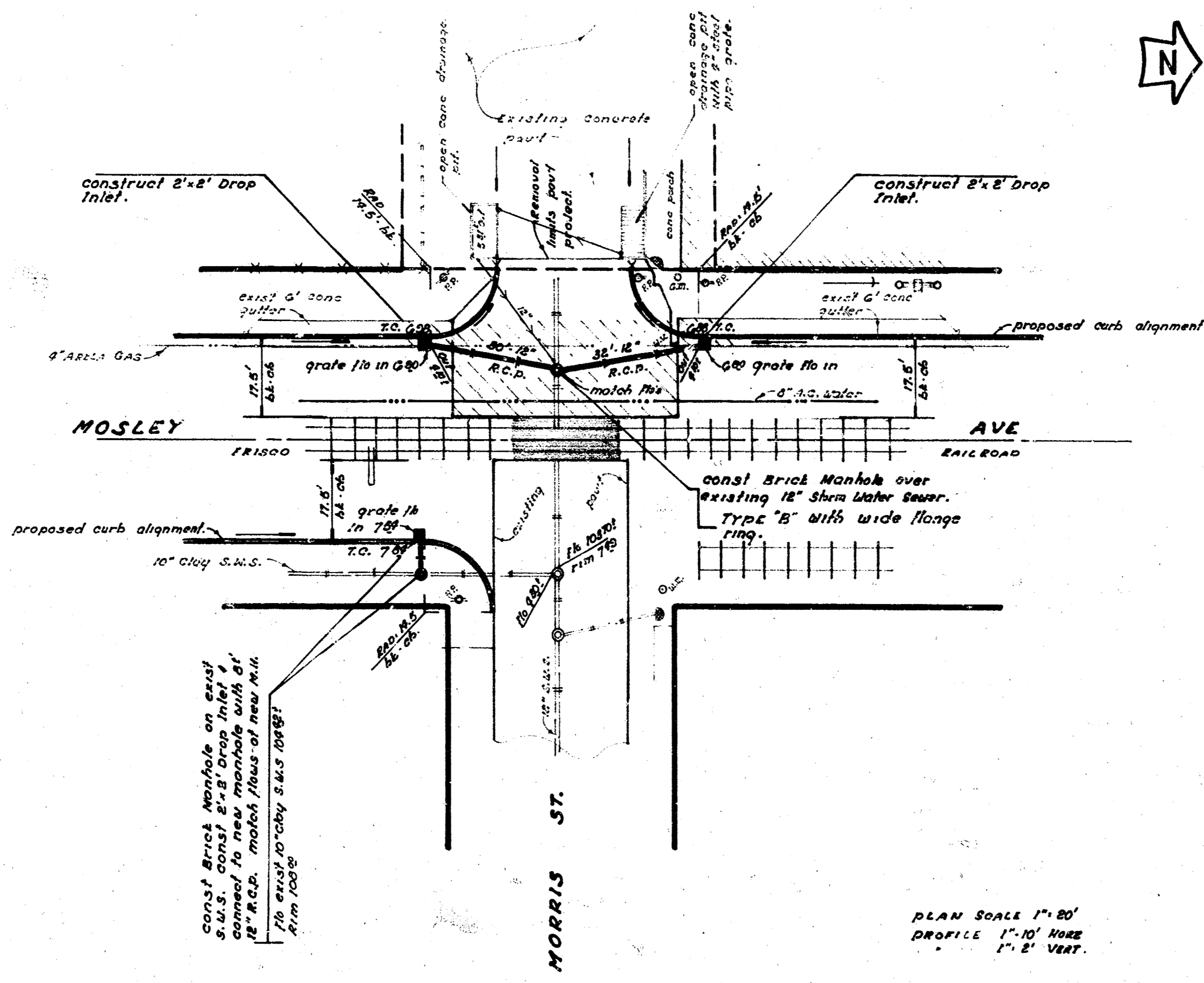
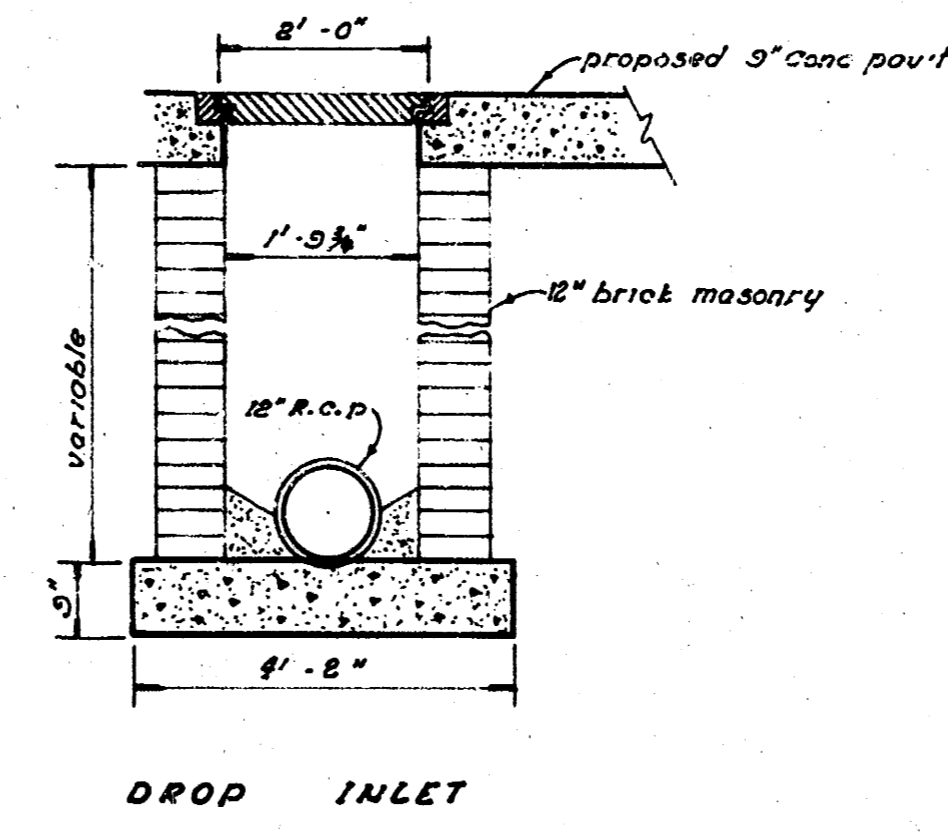


PLAN
DAILY
REVISION
3-5-70

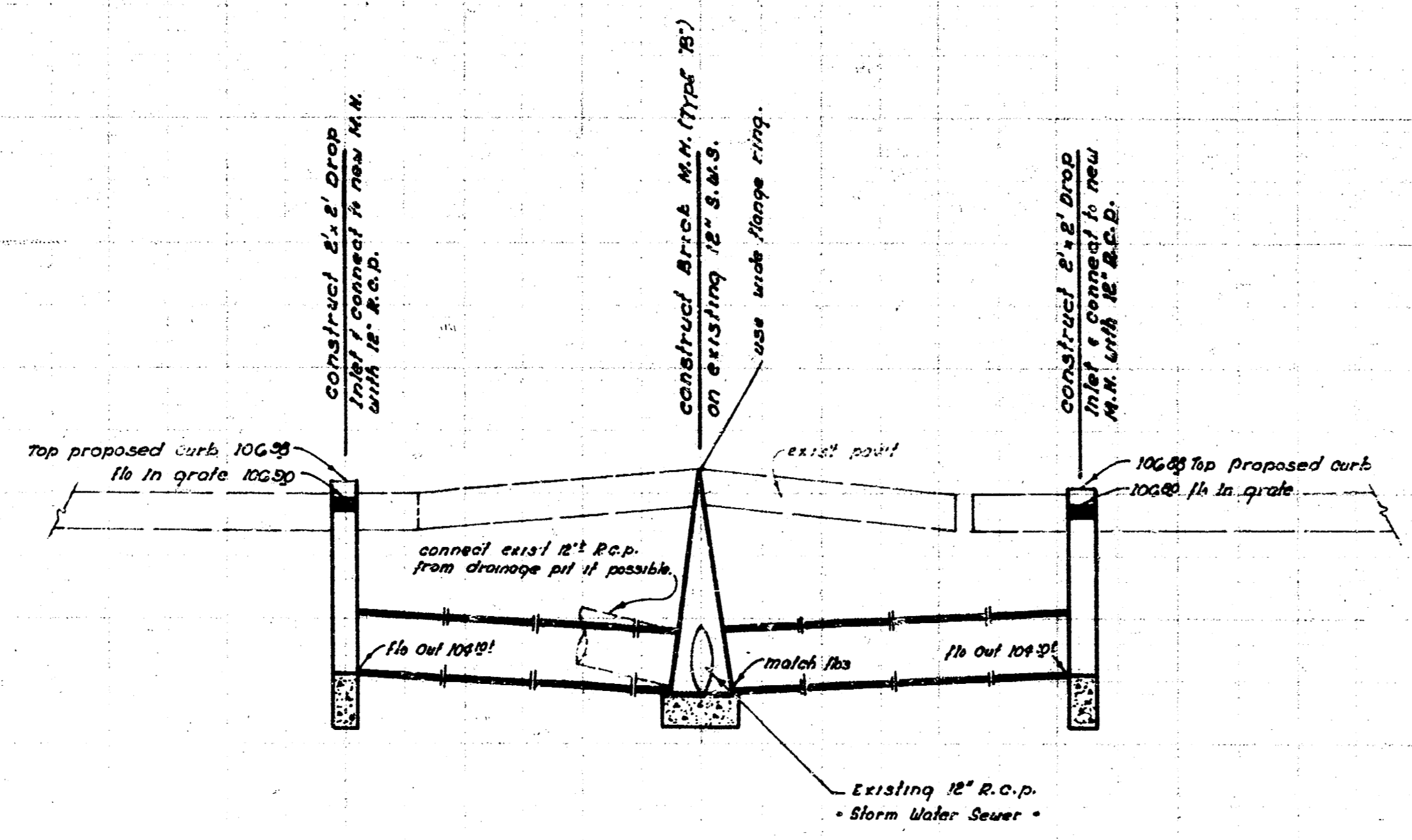


S.M. 10553 "B" in Buena West Side Intersection Block in Sidewalk
 of S.E. corner 104 & Lincoln.
 S.M. 10554 "D" out in N.E. corner Conc base 110' West of West Rail
 in Mosley & 12' S. of back curb. S. Side Lincoln.



PLAN SCALE 1"=20'
 PROFILE 1"=10' HORIZ
 1"=2' VERT.

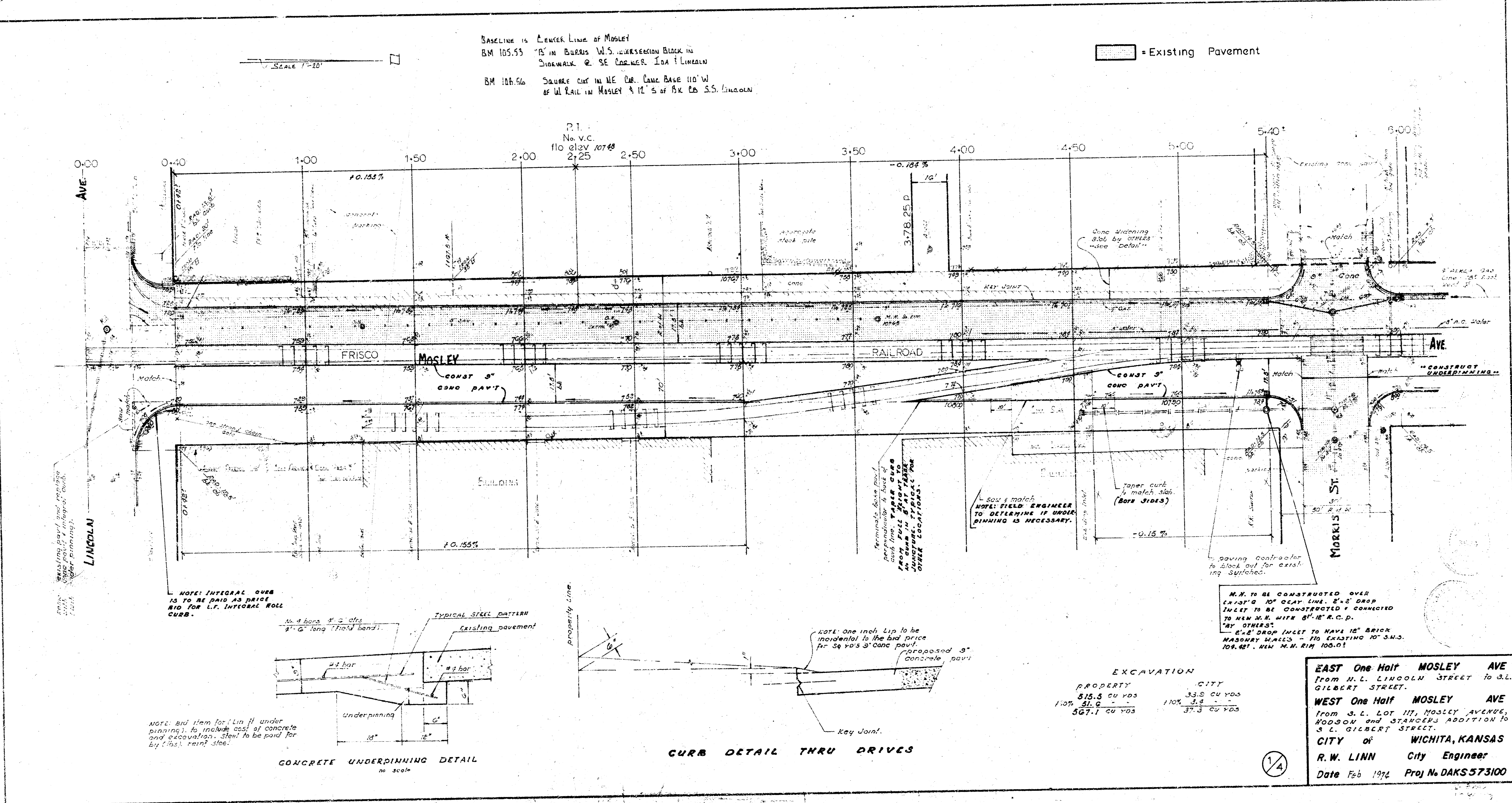
110
105
100



"DRAINAGE" in connection with paving
 MOSLEY STREET from N.L. LINCOLN AVE
 to S.L. GILBERT ST.

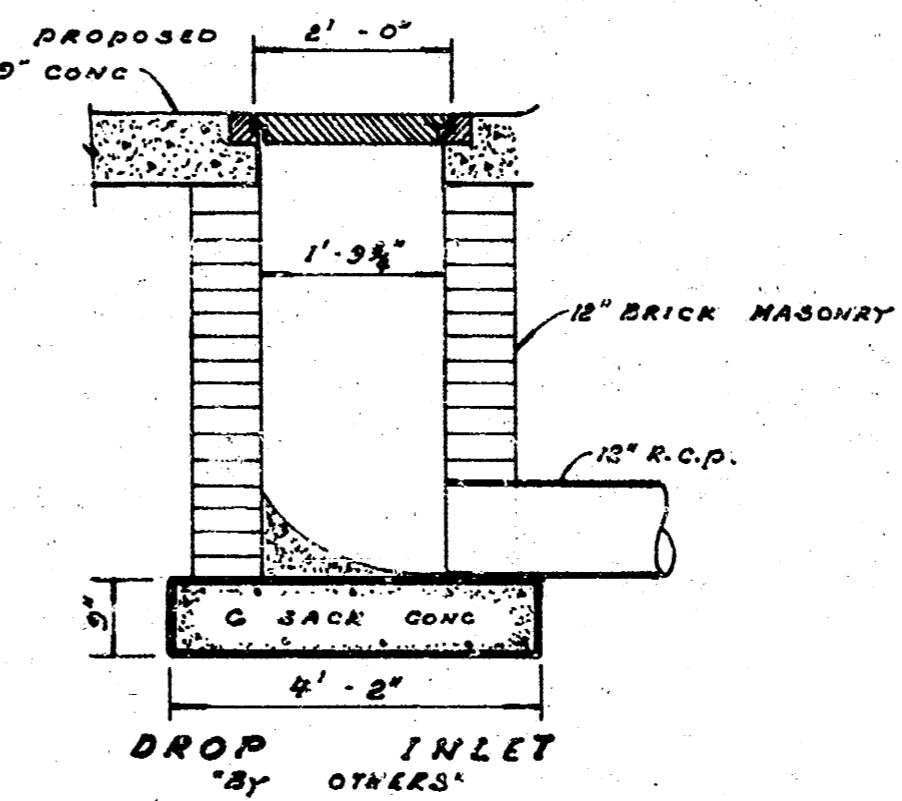
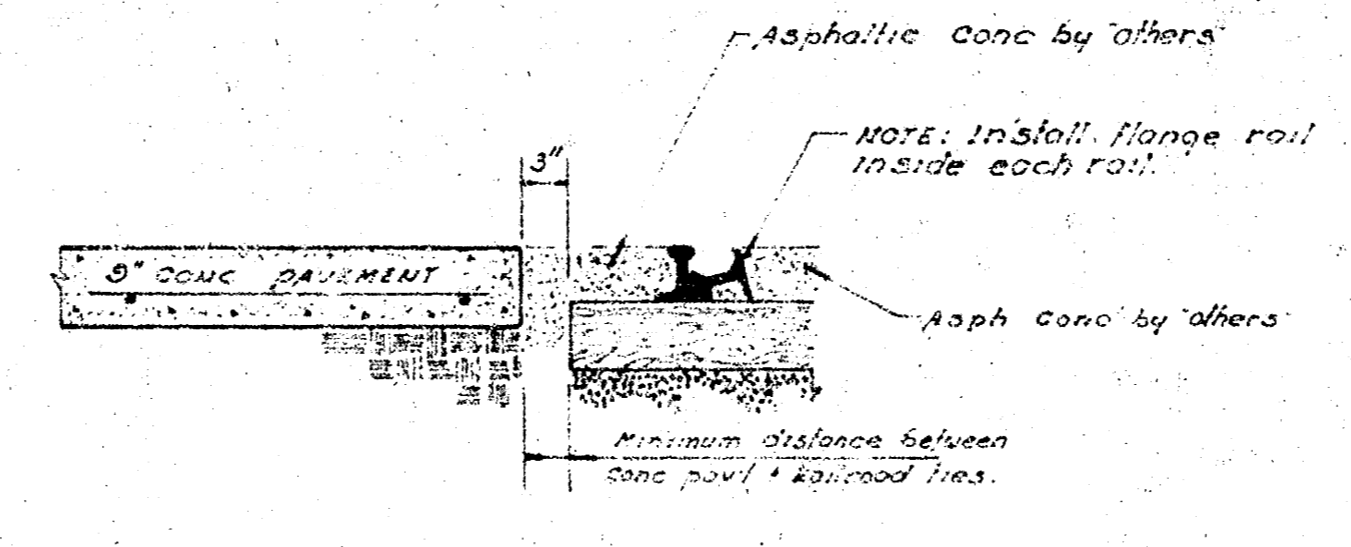
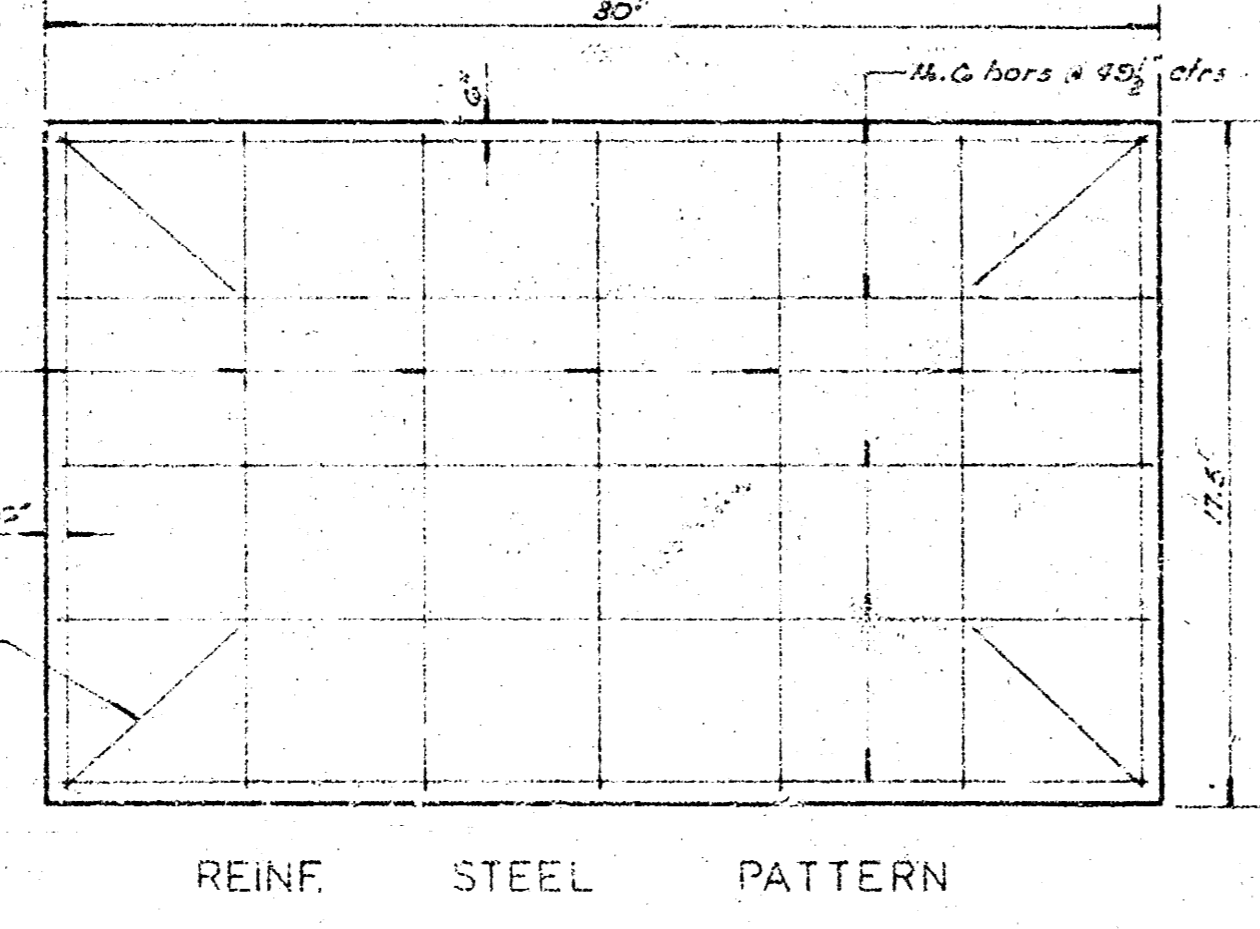
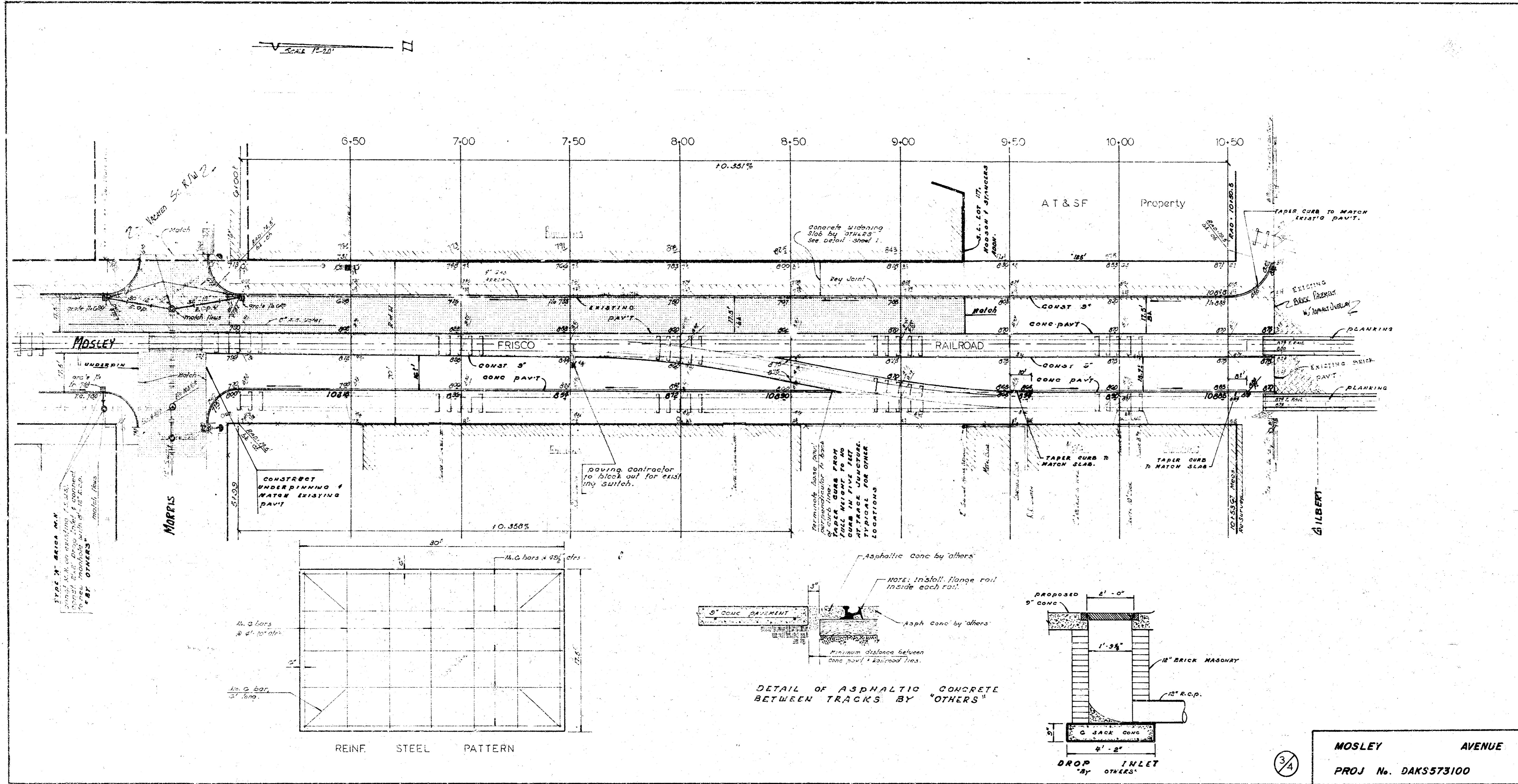
CITY OF WICHITA, KANSAS
 R. W. LINN CITY ENGINEER
 DATE: Aug. 1973 PROJ. No. DAKD 37301G

Survey by: D. J. D. & S. Co. Inc. 1976
 Date: 1/20/76
 Project: 573100
 Scale: 1" = 20'



EAST One Half MOSLEY AVE
 from N.L. LINCOLN STREET to S.L. GILBERT STREET.
WEST One Half MOSLEY AVE
 from S.L. LOT 117, MOSLEY AVENUE, HODSON and STANGERS ADDITION to S.L. GILBERT STREET.
 CITY of WICHITA, KANSAS
 R.W. LINN City Engineer
 Date Feb 1976 Proj. No. DAKS 573100

SCALE 1"=10'



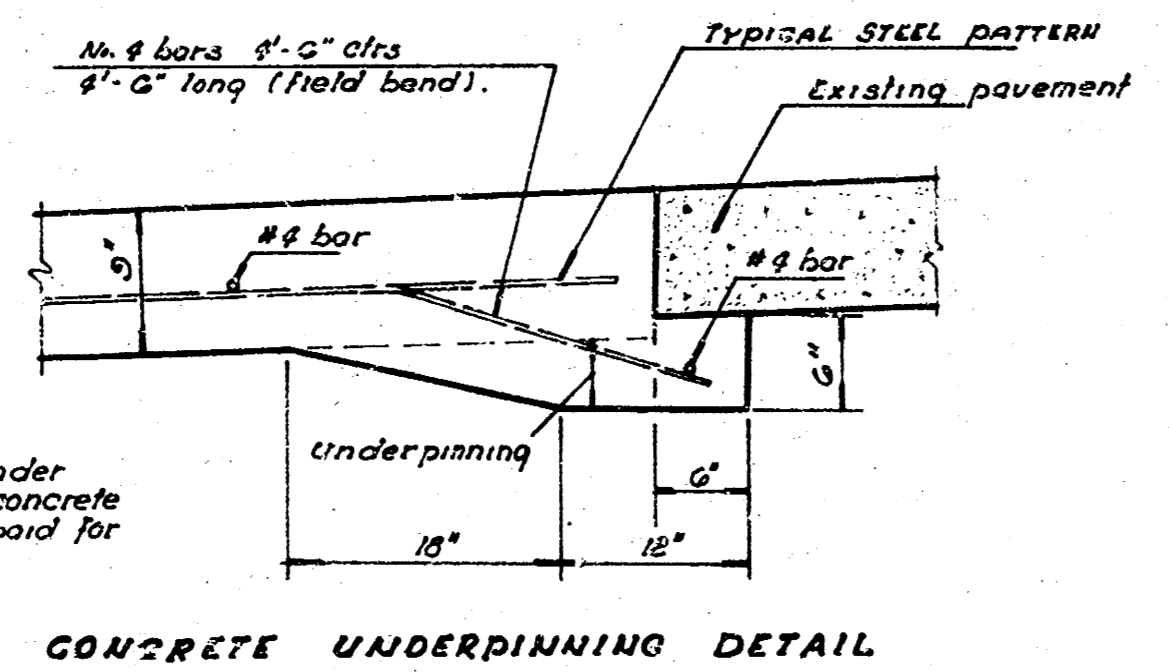
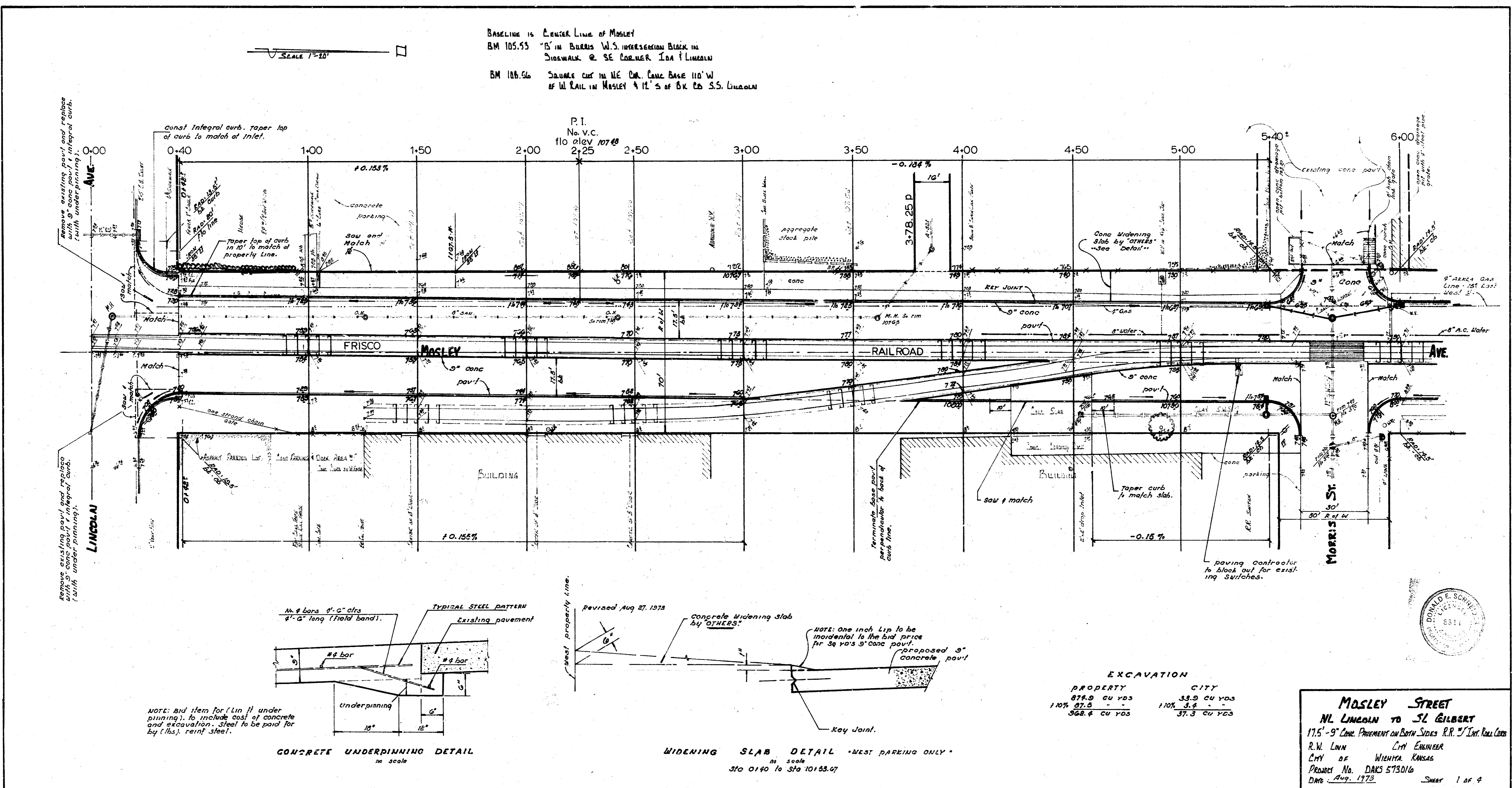
MOSLEY AVENUE
 PROJ No. DAKS573100

12-2017

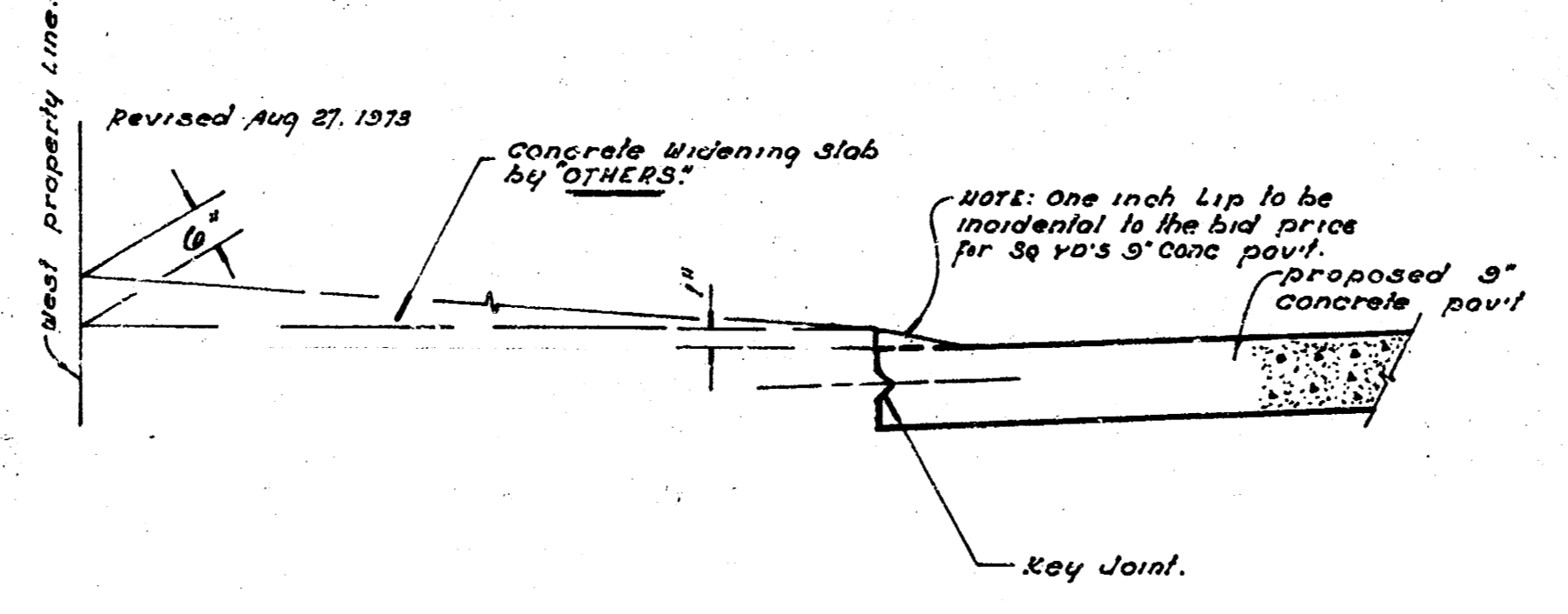
Survey by: DALLAS BUILDING CO
 Plan by: DALLAS BUILDING CO
 Checked by:

SCALE 1"=20'

BASELINE is Center Line of Mosley
 BM 105.53 1/8" in BUREAU W.S. INTERSECTION BLOCK IN
 SHOWMAK @ SE CORNER 104th & LINCOLN
 BM 108.56 Same cut in NE COR. Same Base 110' W
 of W. RAIL in Mosley 4 1/2' S of EX. CO. S.S. LINCOLN



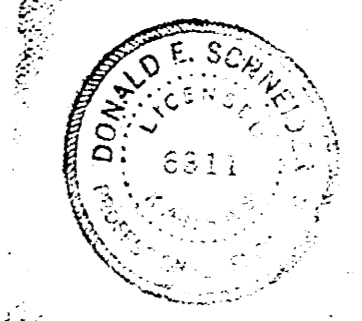
NOTE: Bid item for (Lin II) underpinning, to include cast of concrete and excavation. Steel to be paid for by (lbs.) reinf. steel.



EXCAVATION

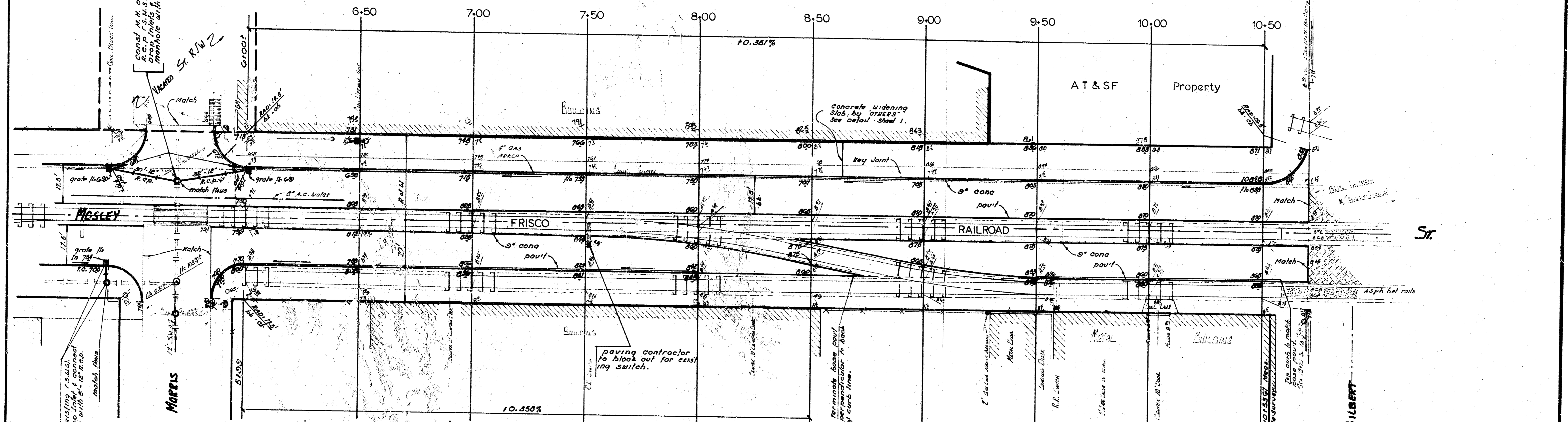
PROPERTY	CITY
874.9 cu yds	33.9 cu yds
1107.5 cu yds	31.4 cu yds
526.4 cu yds	37.3 cu yds

MOSLEY STREET
 NL LINCOLN TO ST GILBERT
 17.5' - 9" CONC. PAVEMENT ON BOTH SIDES R.R. 5' Int. Rail Conc.
 R.W. Linn City Engineer
 City of Wichita, Kansas
 Project No. DAKS 573016
 Date Aug. 1973 Sheet 1 of 4



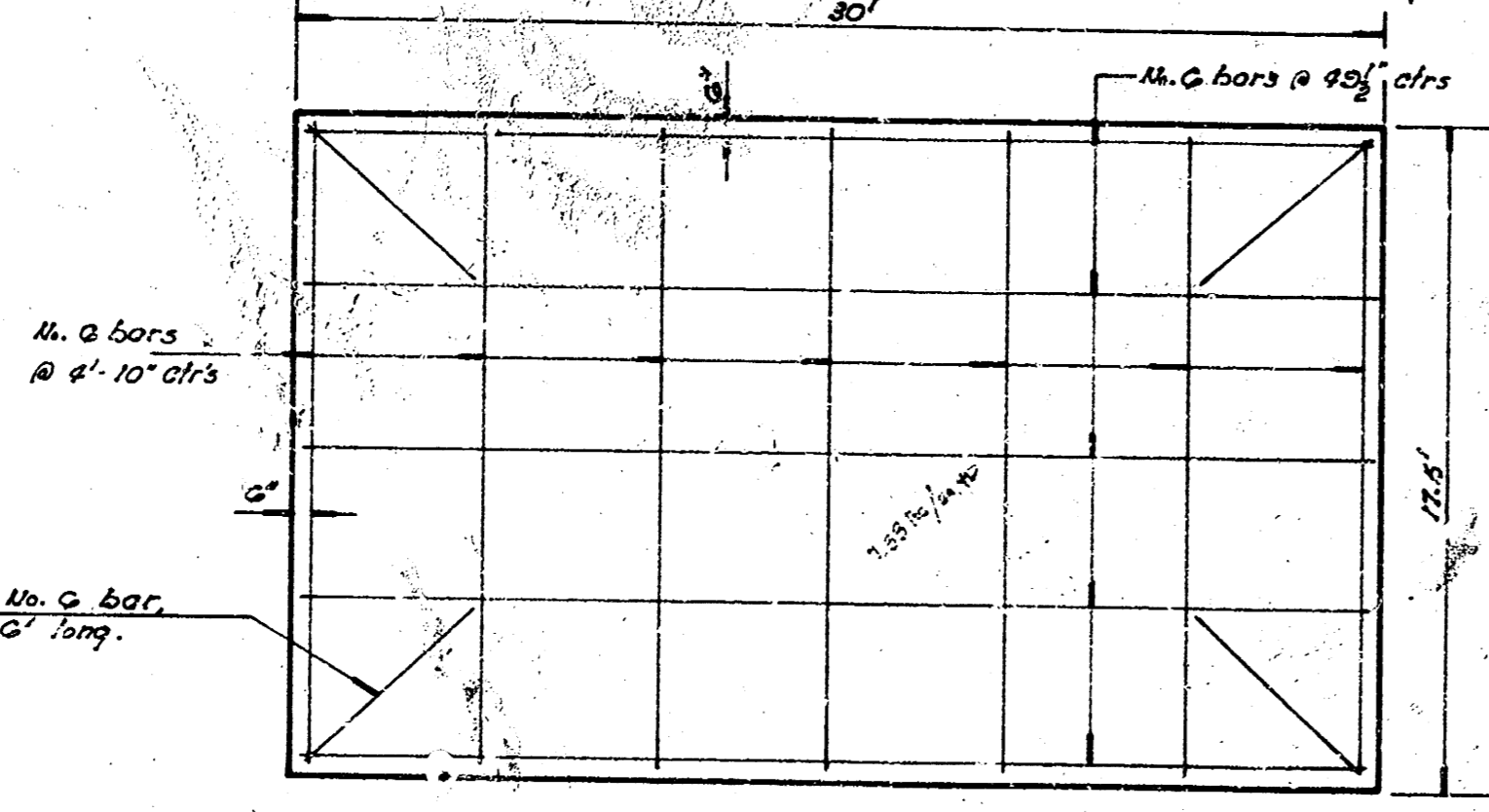
SCALE 1"=20'

NOTE: FIELD ENGINEER to set flows of grate that leads to match flow of exist storm water sewers of new manholes.

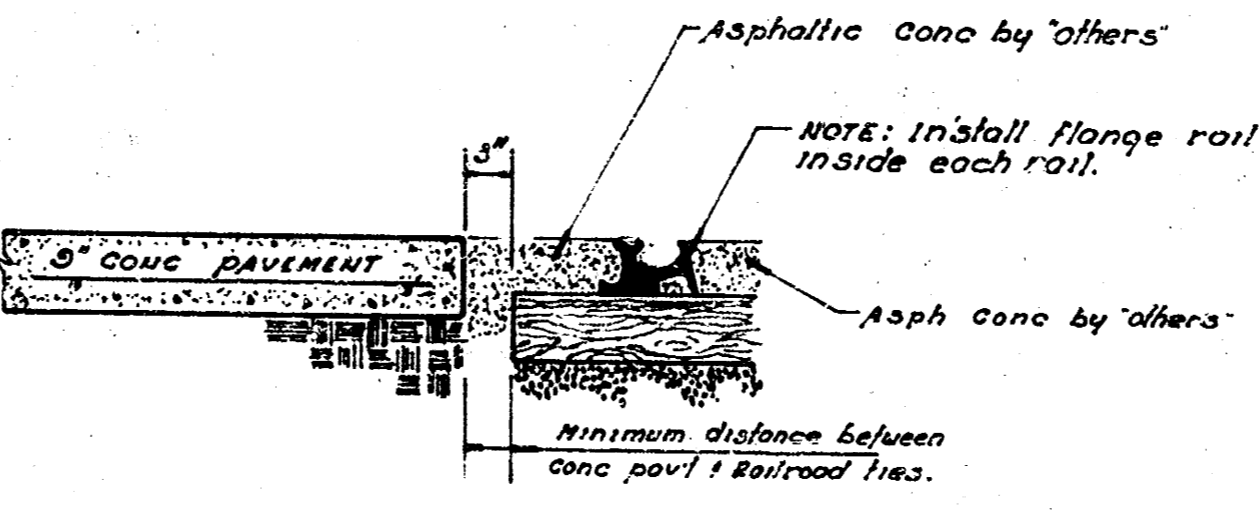


Consol. M. & K. on existing 12" cast iron pipe. 12" x 12" manhole with 12" x 12" cover.

MORRIS



REINF. STEEL PATTERN



DETAIL OF ASPHALTIC CONCRETE BETWEEN TRACKS BY "OTHERS"

MOSLEY STREET
 NW LINCOLN TO SC GILBERT
 Project No. DAKS 573016 Sheet 2 of 4