

**GENERAL NOTES**

- Utility service lines, poles, valve boxes, gas meters, and etcetera are to be adjusted as necessary by others prior to construction unless the plans specifically call for their adjustment by the Contractor or unless the plans specifically identify a utility to be adjusted by its owner during construction. Existing utilities and their location, as shown on the plans, represent the best information obtainable for design. The Contractor will be required to work around existing utilities within the right-of-way which do not conflict with proposed construction.
- The Contractor shall give all property owners and/or tenants of developed property abutting the project limits a minimum of ten (10) days advance notice prior to start of construction.
- Contractor will be required to provide a minimum advance notice of forty-eight (48) hours to utility companies prior to excavation or working adjacent to utilities.  
Kansas One-Call 687-2470
- A saw cut of at least one-half the depth of existing surface courses or one-fourth the depth of the existing total pavement thickness shall be provided at locations where proposed construction abuts an existing surface course or pavement for which partial removal of that surface or pavement is required. Sowed joint to facilitate removal within three (3) feet of existing joints will not be permitted and for such instances the limits of removal shall extend to the existing joint. Such saw cuts will not be paid for directly and this cost shall be considered INCIDENTAL to the removal of the surface or pavement.
- All project waste including any trees, milled asphalt, rubble from miscellaneous structures, abandoned pipes, excess excavation & etc. shall be disposed of on sites to be provided by the Contractor. These sites shall be approved by the Engineer as to suitability, appearance and site location. Locations that, in the opinion of the Engineer, will leave an unsightly appearance will not be approved. All disposal sites must be approved by the Kansas Department of Health and Environment. Material either stockpiled or disposed of in a flood plain would require a Kansas State Board of Agriculture permit. Any material dumped in waters of the United States or wetlands is subject to U.S. Corps of Engineers permitting regulations. Any material buried or stockpiled beyond approved construction limits would require additional archaeological investigations unless buried in a previously approved borrow location.
- Prior to bidding the project, each bidder shall visit the site and satisfy himself of surface & subsurface conditions. Each bidder shall also fully inform himself as to the extent of the scope of work to be performed.
- Manhole tops indicated to be adjusted shall include new standard ring and cover castings except where noted. Castings removed shall be removed and disposed of by the Contractor. Cost of removal and disposal shall be INCIDENTAL to "Site Clearing".
- Areas over-excavated in surface or pavement removal shall be filled to sub grade elevation and compacted to 95% Std. Density. Cost shall be INCIDENTAL to the Project.
- Where new alley pavement abuts existing, functional, garage floors or driveway pavement, Contractor shall adjust side slopes of new pavement as practicable such that edge differences between new pavement and existing are minimized.
- No traffic will be carried through the Project during Construction.
- The Contractor shall be made aware that he will be working in close proximity of existing utilities. Any conflicts with such utilities shall be reported to the Engineer. The Contractor shall coordinate the construction of this project with relocation of any existing utilities by the utility companies.
- Removal of all signs, foundations, abandoned pipes, fences, trees, shrubs, stumps, drain pipes (<12"), pavement markings, and any other items slated for removal for which a pay item is not provided shall be INCLUDED in the lump sum bid item "R/W Clearing and Site Preparation."
- The Contractor shall not start work on the Project until the Project Inspector is assigned and is present on site. Any work done without inspection will be required to be uncovered for inspection.
- The Contractor shall comply with all applicable safety regulations.
- Where construction abuts an existing building, the construction limits and temporary easement, if applicable, shall be considered to be at the face of the building. All brick masonry and building facing shall be protected from concrete splatters with visqueen or other approved material. Any splatters or blemishes shall be removed by the Contractor and the surface cleaned and restored to its original appearance.

**LIST OF UTILITY COMPANIES**

Contractor will be required to provide a minimum advance notice of forty-eight (48) hours to utility companies prior to excavation or working adjacent to utilities.

TYPE	OWNER	PHONE #
Locator Service	Kansas One-Call	687-2470
TV	Cox Communications	262-0661
Security	Multimedia Security Systems	263-2061
Electric	Kansas Gas & Electric Company	383-8600
Gas	Kansas Gas Service	832-3101
Telephone	Southwestern Bell Telephone Company	800-344-7233
Water	City of Wichita Water Department	268-4908
Sewer	City of Wichita Sewer Maintenance	268-4071

# NORTH SOUTH ALLEY

from MURDOCK to 8th. Street  
Between MARKET and BROADWAY

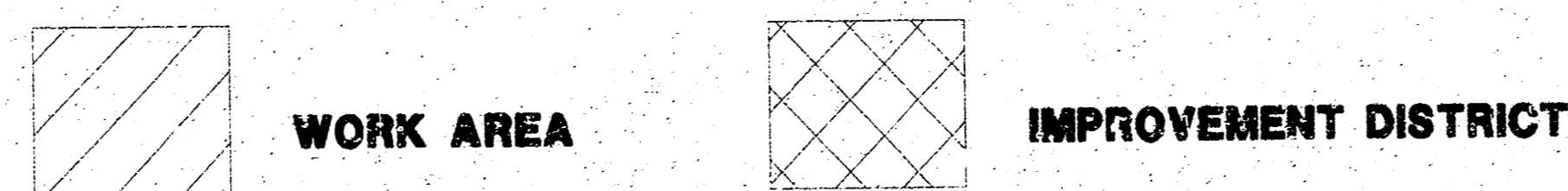
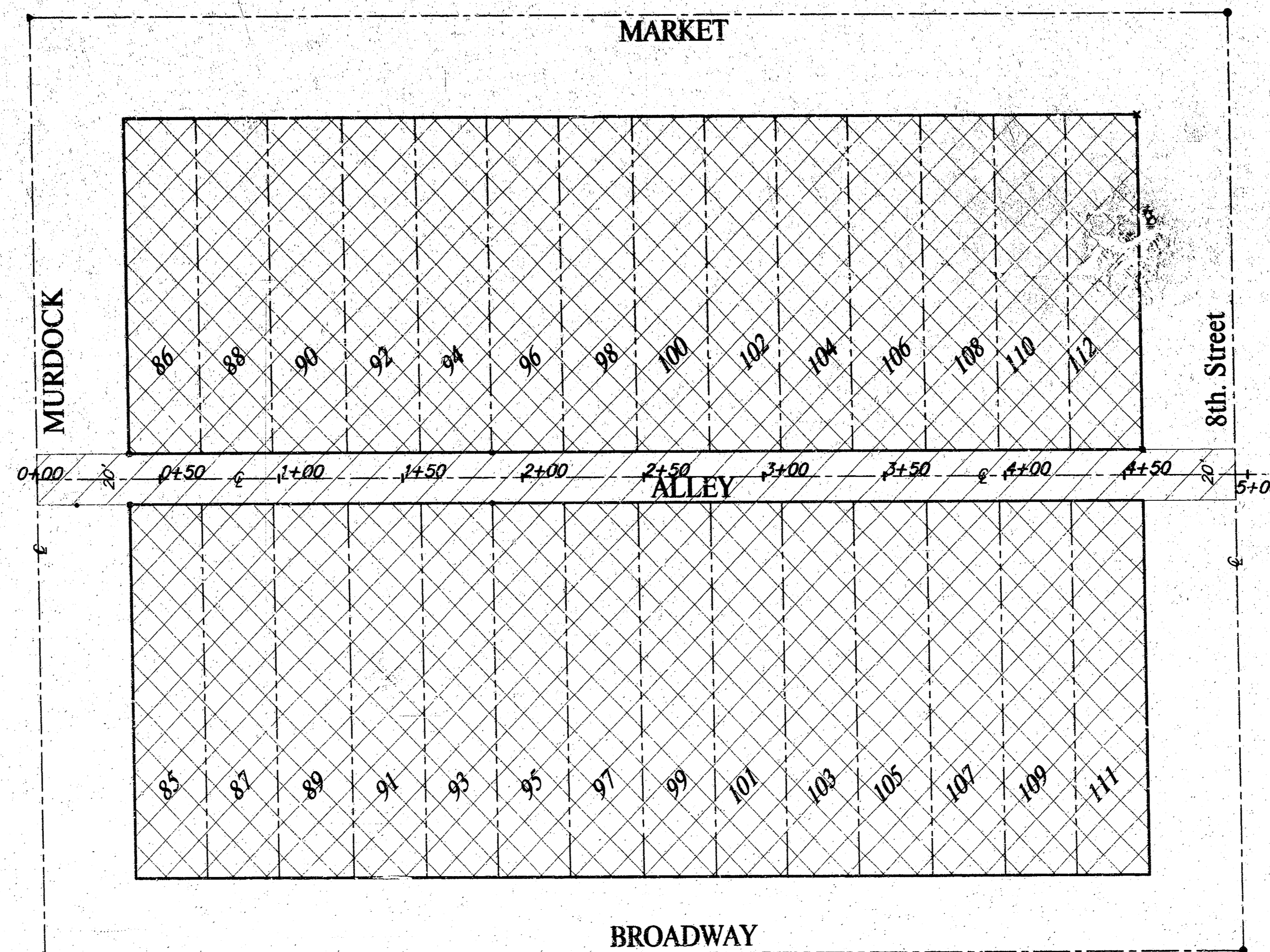
Project No. 472-83414      O.C.A. No. 765699

CITY OF WICHITA, KANSAS  
Michael E. Lindebak, P.E. City Engineer  
OCTOBER, 2001

**BENCHMARKS:**

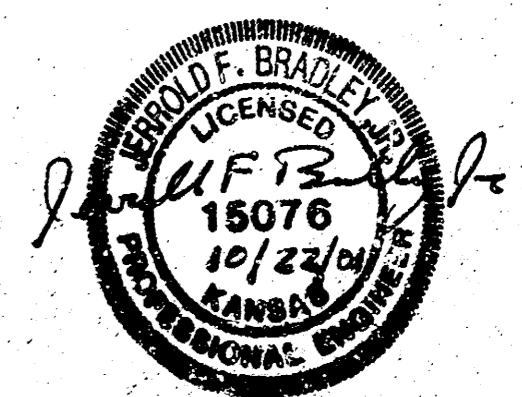
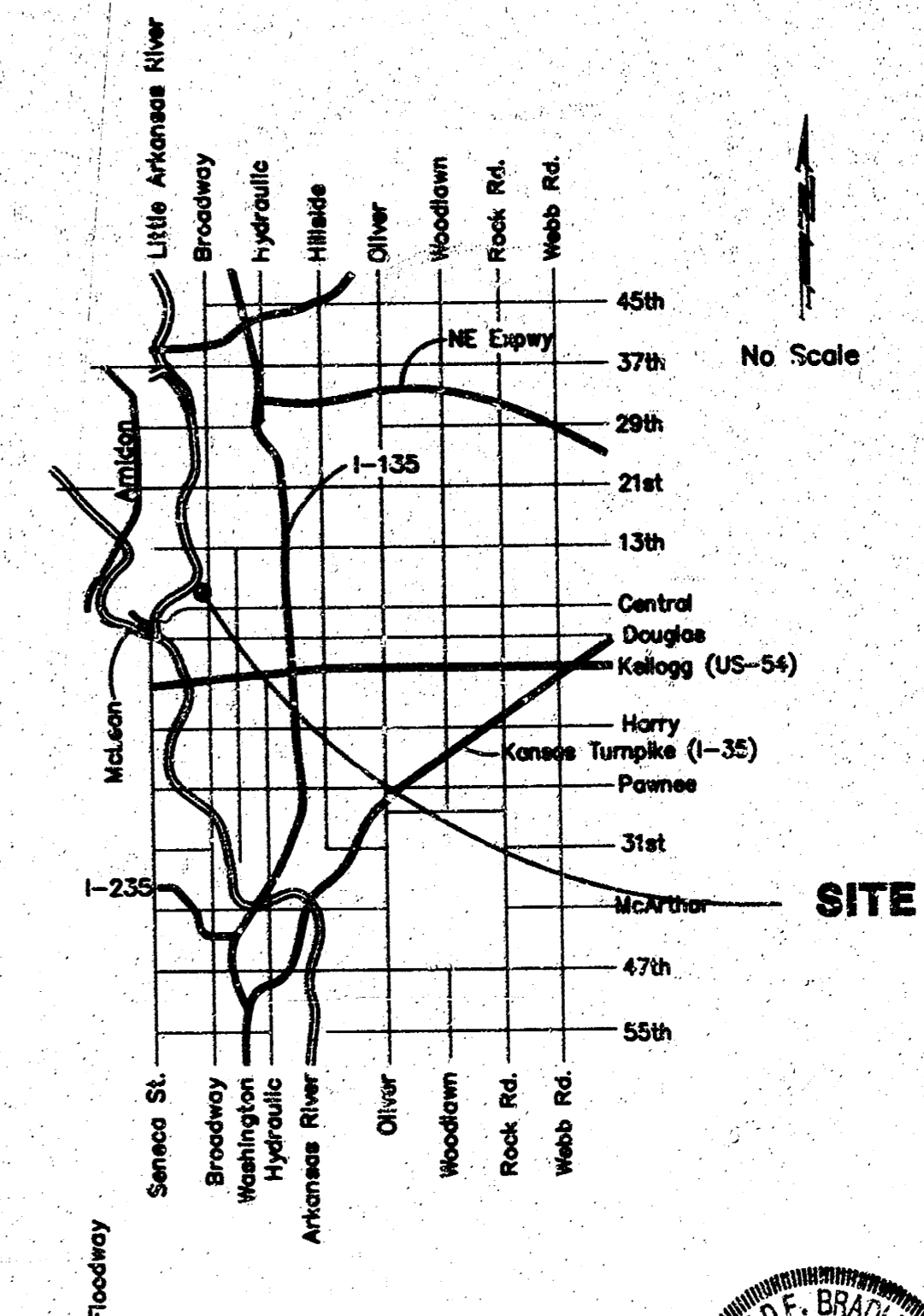
BM #1: - [ ] Cut, Top of Curb south end of return S.E. Corner of 8th & Market. Elevation = 114.39 City Datum  
BM #2: - [ ] Cut, Top of Curb at @ of inlet, north side of Murdock, 25' east of @ of Alley between Market and Broadway. Elevation = 113.88 City Datum

SCALE: 1" = 40'

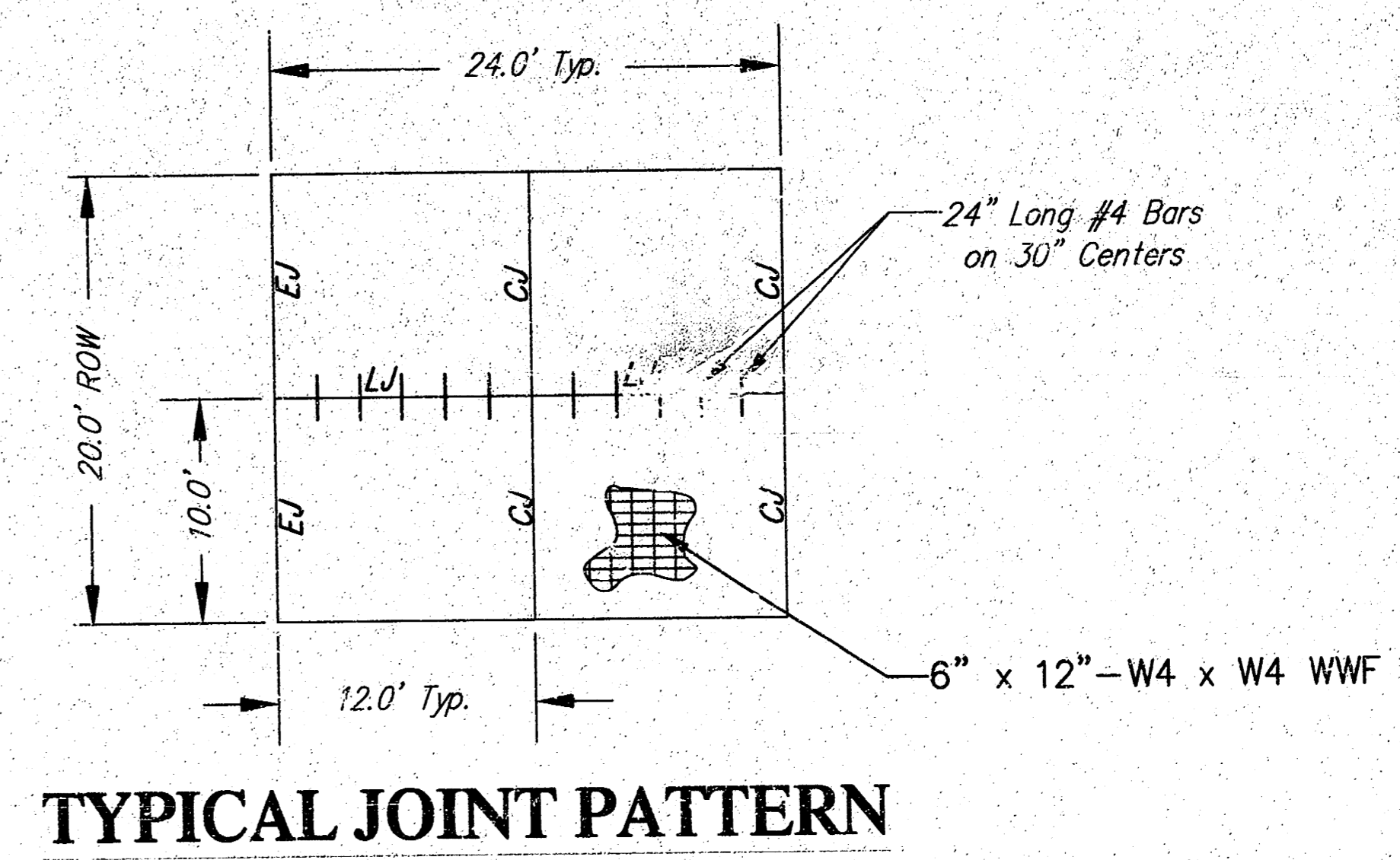
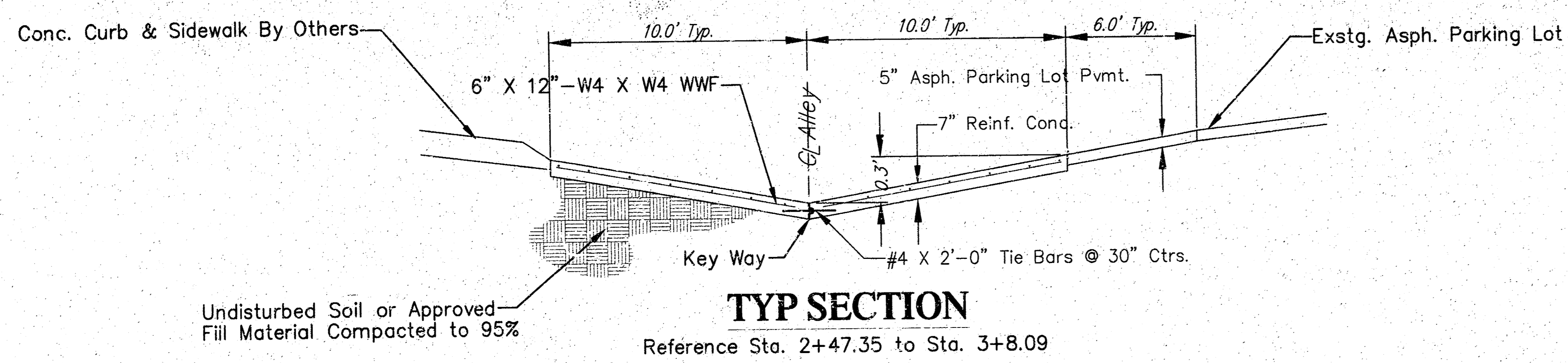
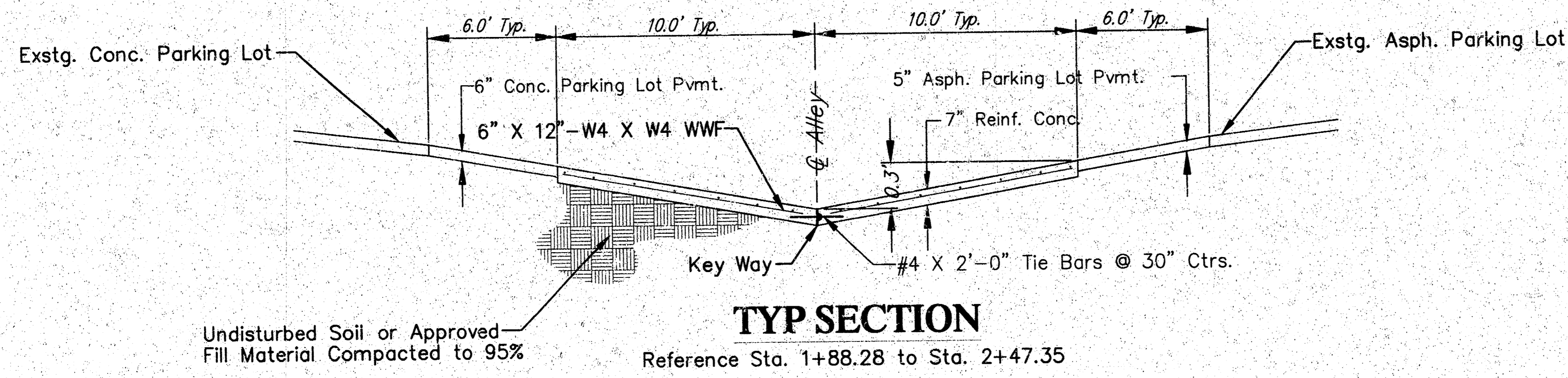
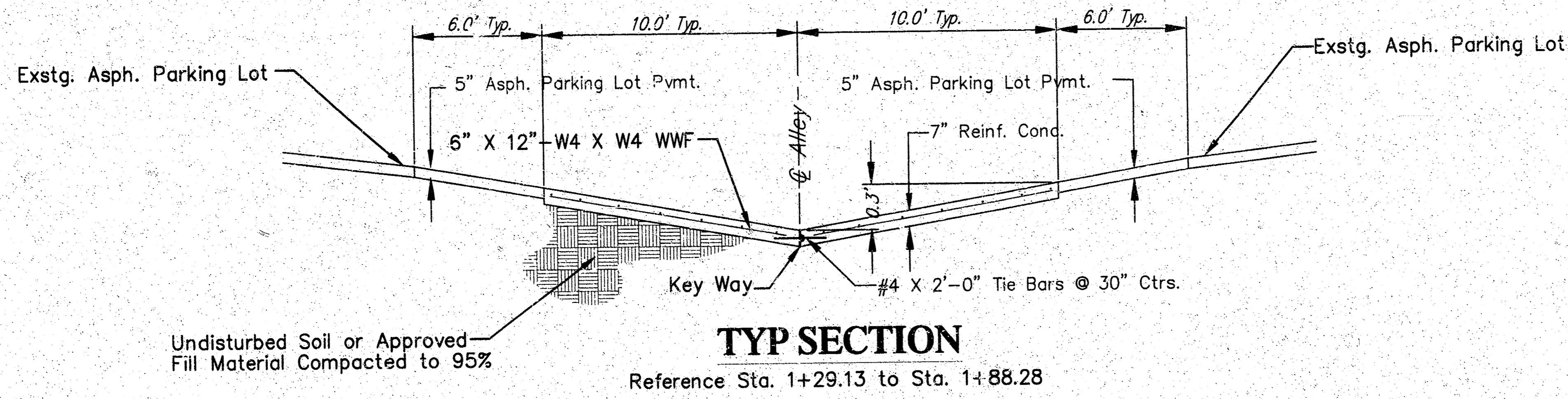


**SHEET INDEX:**

- Cover Sheet
- Typical Pavement Sections
- Paving Details
- Manhole Ring & Cover
- Paving Plans
- Cross Sections



**BAUGHMAN COMPANY, P.A.**  
ENGINEERING, SURVEYING, & PLANNING  
316-232-7271 • 316-ELIUS • WICHITA, KANSAS 67211



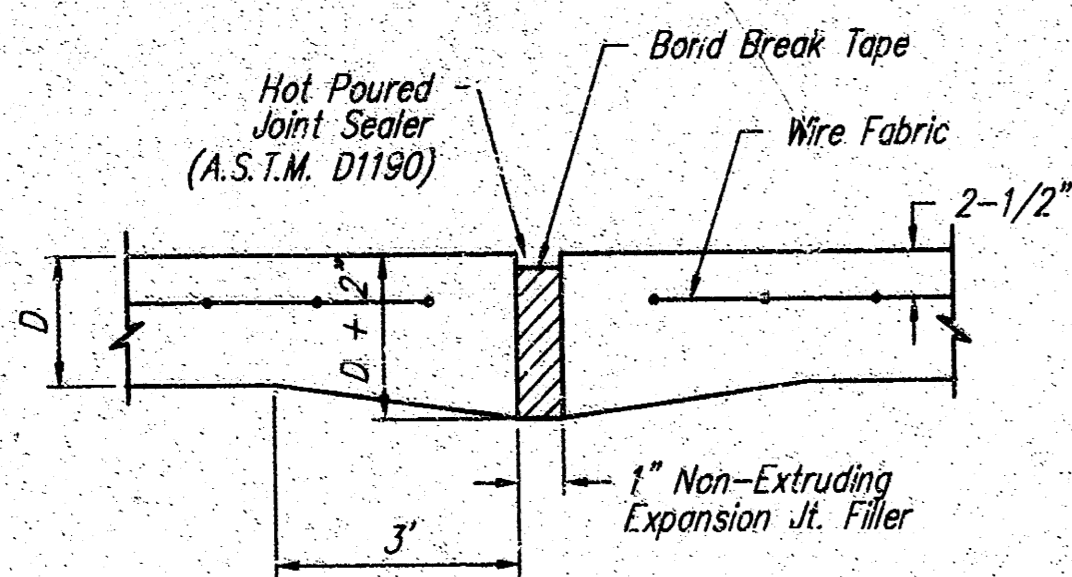
F:\Eng\Artichoke Alley\typsec.dwg Sun Oct 21 16:15:18 2001

PROJECT NUMBER 472-83414	SHEET NAME typsec	ENGINEERING DIRECTORY F:\Eng\Artichoke Alley
DESIGN JFB/KK	DRAWN TCA	APPROVED JFB
DATE SEPT 01	SCALE NONE	BAUGHMAN NO 01 08 E125

NORTH SOUTH ALLEY  
**TYPICAL SECTIONS**  
MURDOCK TO 8th STREET BETWEEN MARKET & BROADWAY

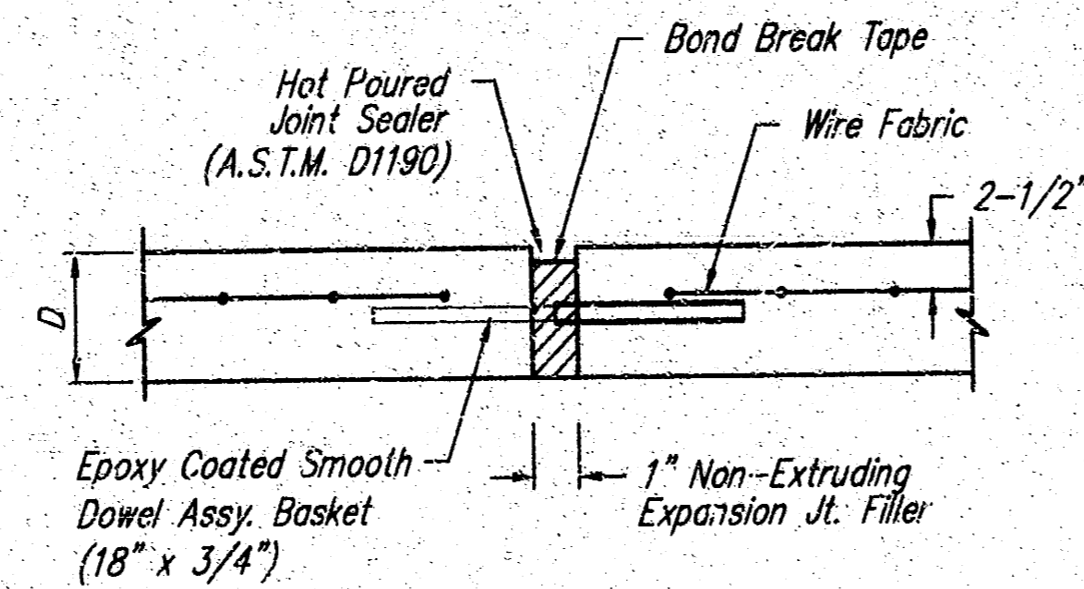
**BAUGHMAN COMPANY, P.A.**  
ENGINEERING, SURVEYING, & PLANNING  
316-382-7271 • 315 ELLIS • WICHITA, KANSAS 67211

SHEET  
2  
OF  
7

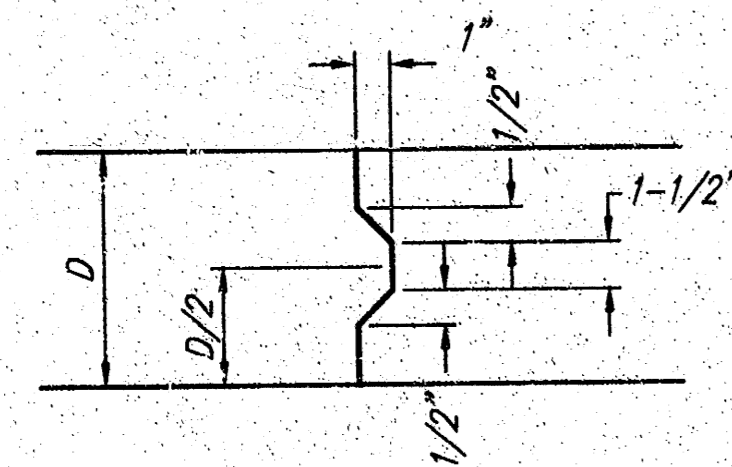


**EXPANSION JOINT**

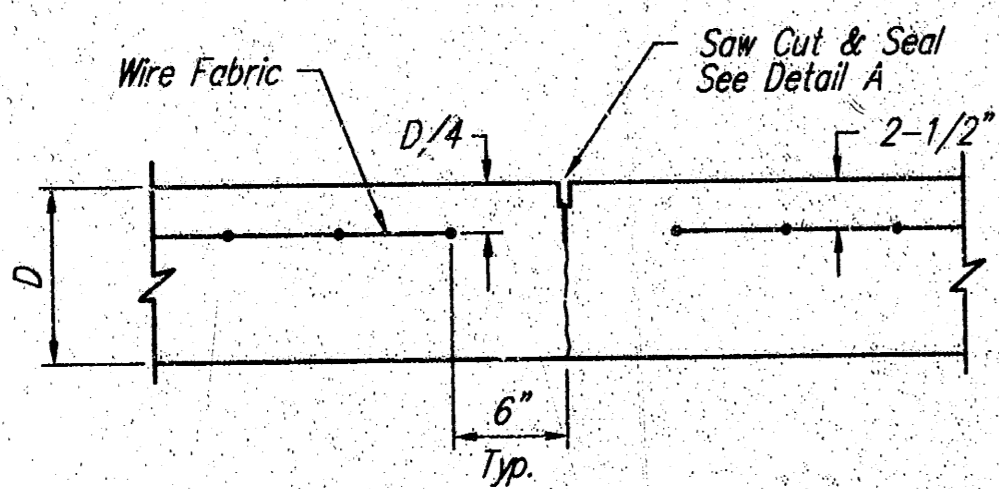
NOTE: Extra Thickness to be Subsidiary to Price of Square Yards Pavement



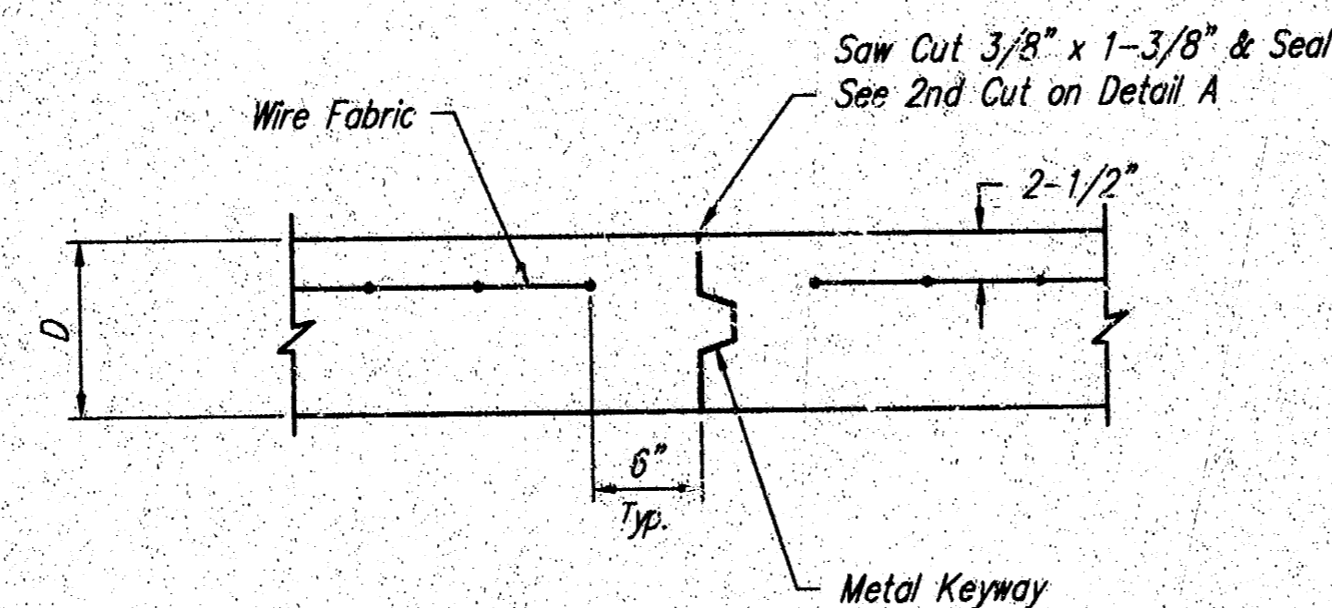
**EXPANSION JOINT**



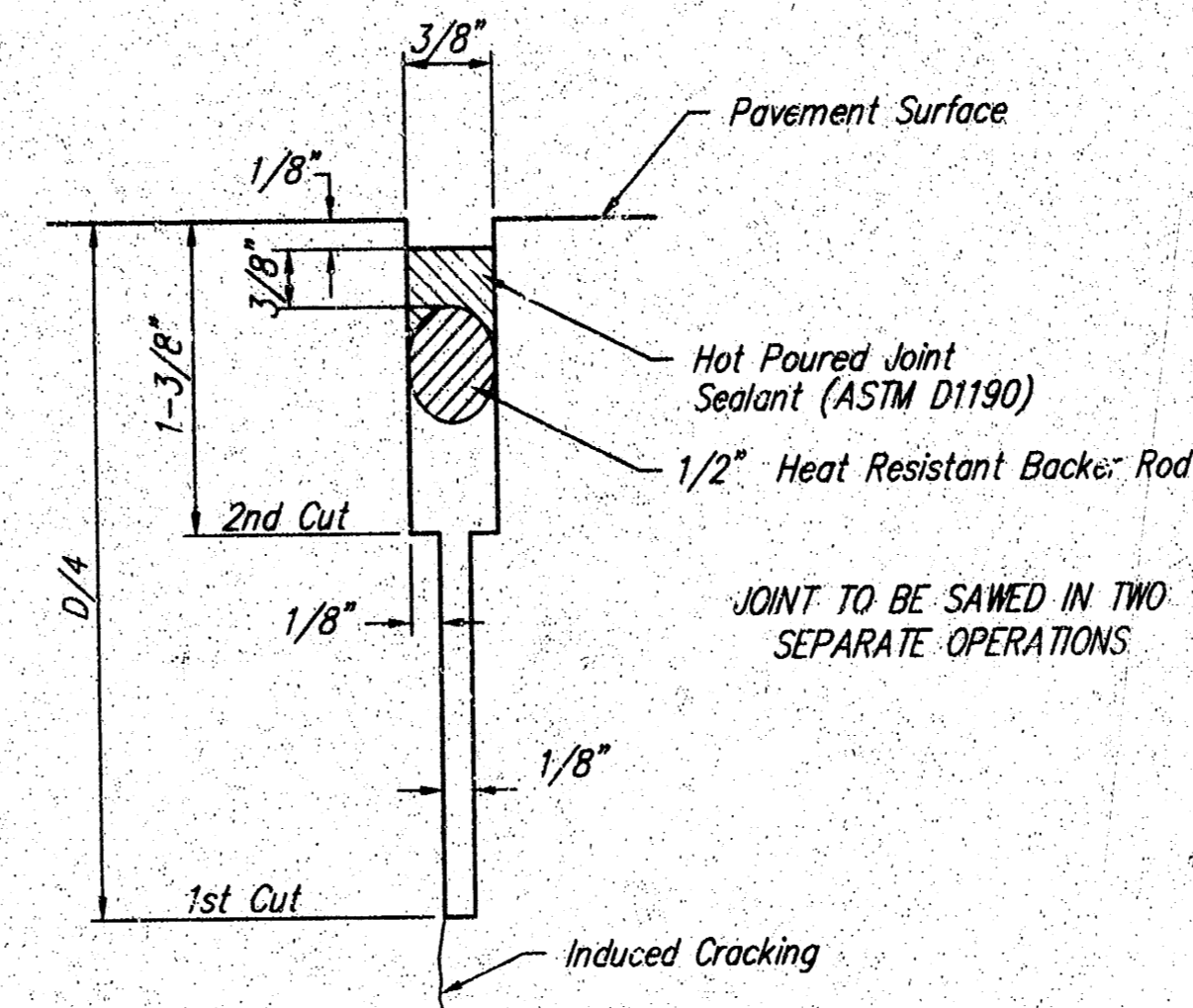
**KEYWAY DETAIL**



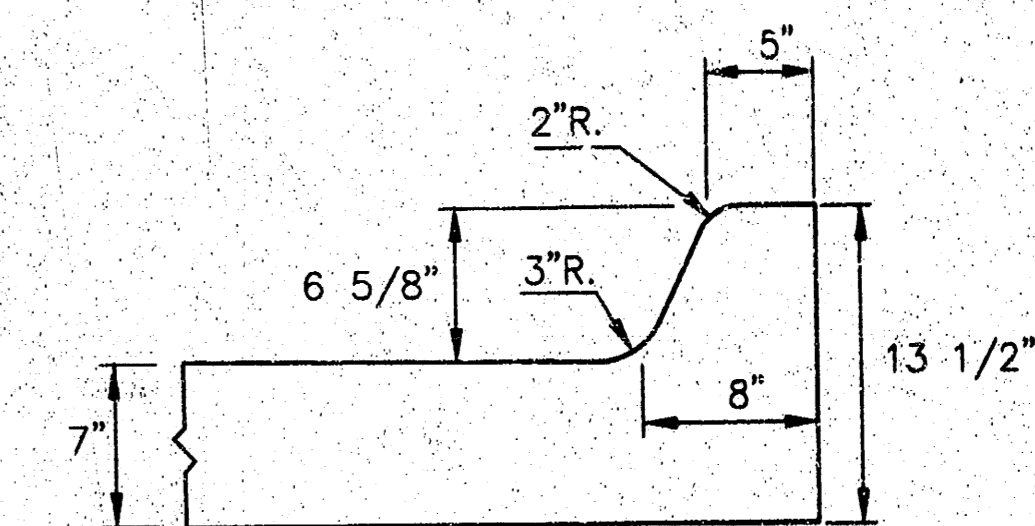
**CONTRACTION JOINT DETAIL (C.J.)**



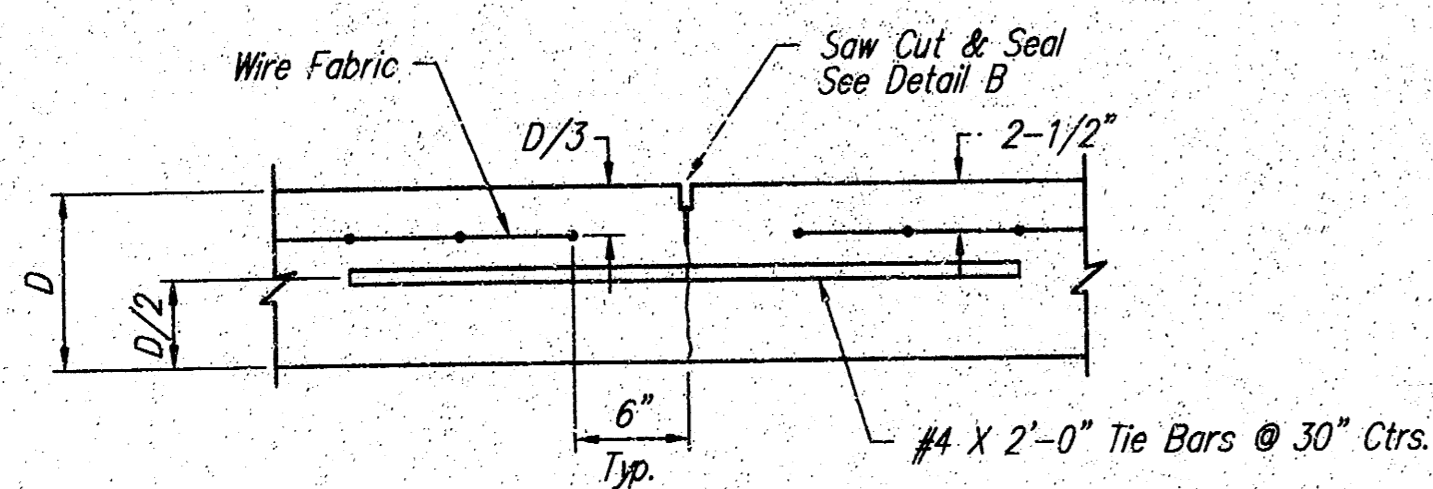
**OPTIONAL CONTRACTION JOINT (CONSTRUCTION JOINT)**



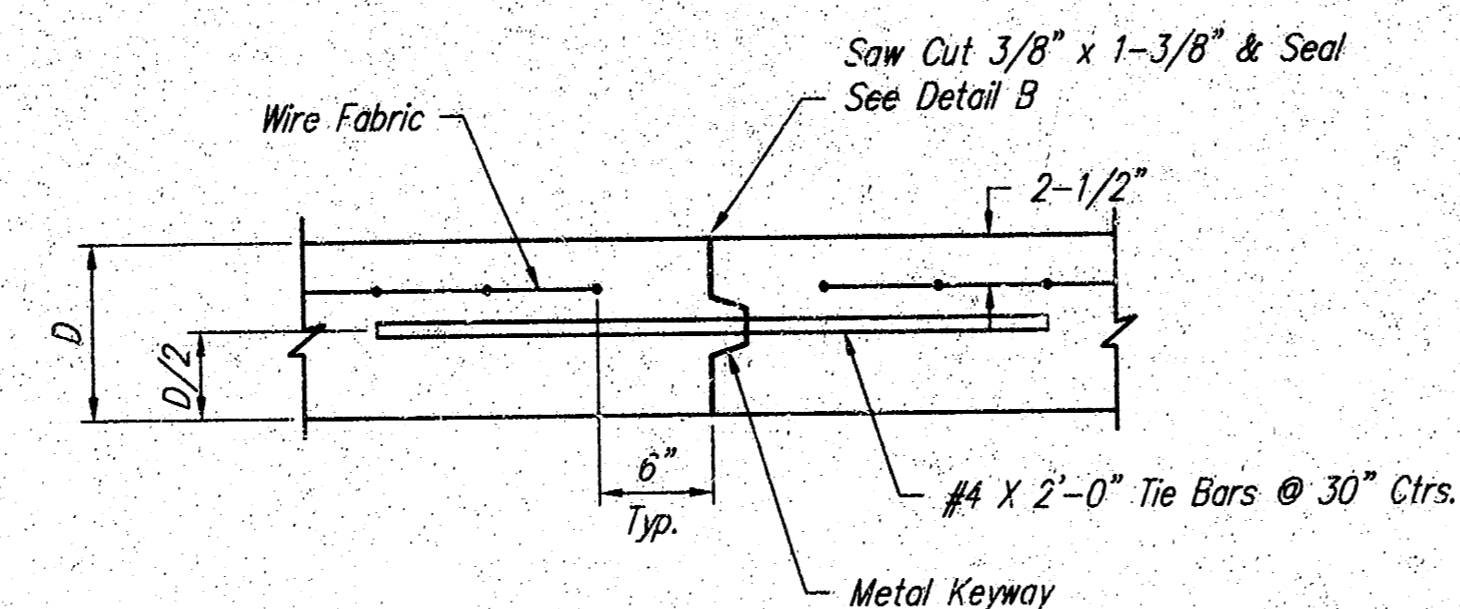
**SAW JOINT DETAIL "A"**



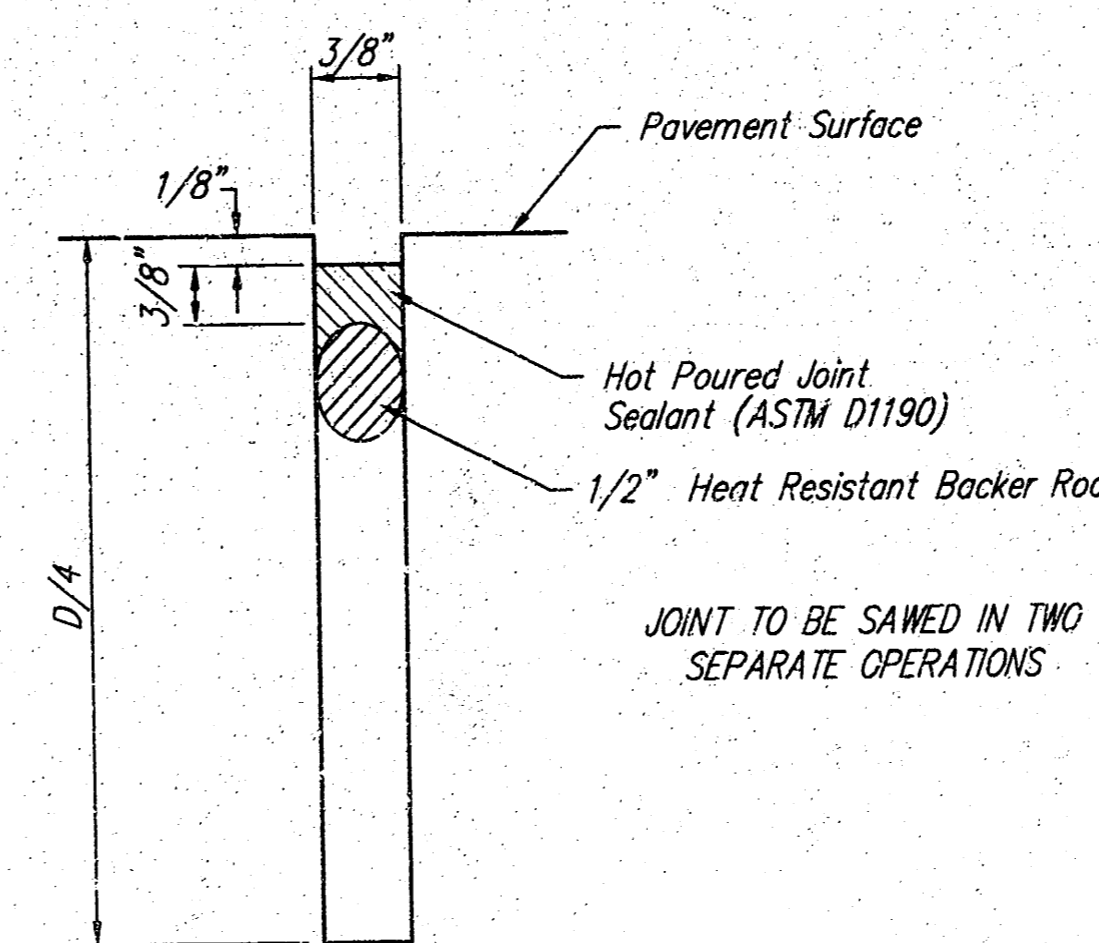
**MONOLITHIC EDGE CURB DETAIL**



**LONGITUDINAL JOINT DETAIL (L.J.)**

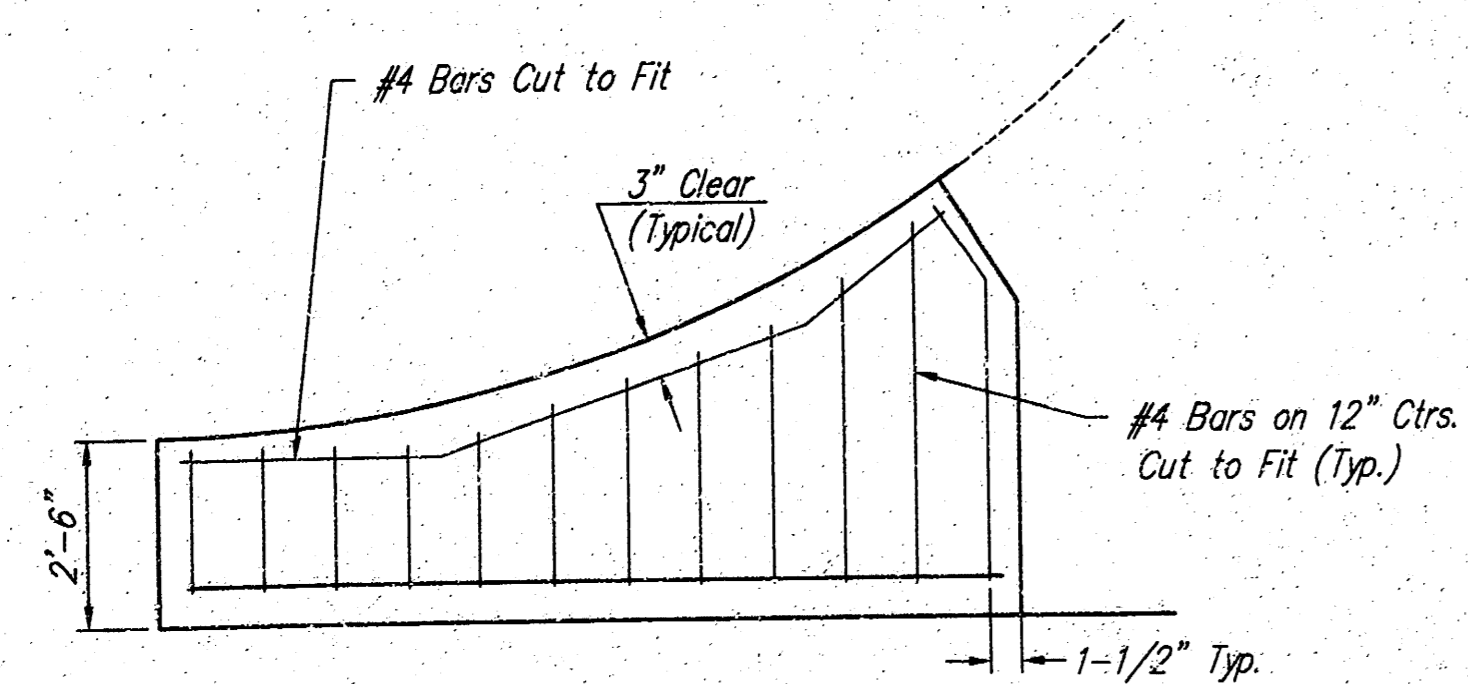


**OPTIONAL LONGITUDINAL JOINT DETAIL (L.J.) (CONSTRUCTION JOINT)**



**SAW JOINT DETAIL "B"**

NOTE: 6" X 12" W4XW4 Wire Fabric Reinforcing Shall Be Placed So That The Wires With The 6" Spacing Will Run Parallel With The Longitudinal Joints.



**WING REINFORCING DETAIL**

PROJECT NUMBER 472-83414	SHEET NAME Pavdet	ENGINEERING DIRECTORY F:Eng/ArtichokeAlley
DESIGN JFB/KK	DRAWN TCA	APPROVED JFB
DATE SEPT01	SCALE None	BAUGHMAN NO. 01-08-E125

NORTH SOUTH ALLEY  
**PAVING DETAILS**  
MURDOCK TO 8th STREET BETWEEN MARKET & BROADWAY

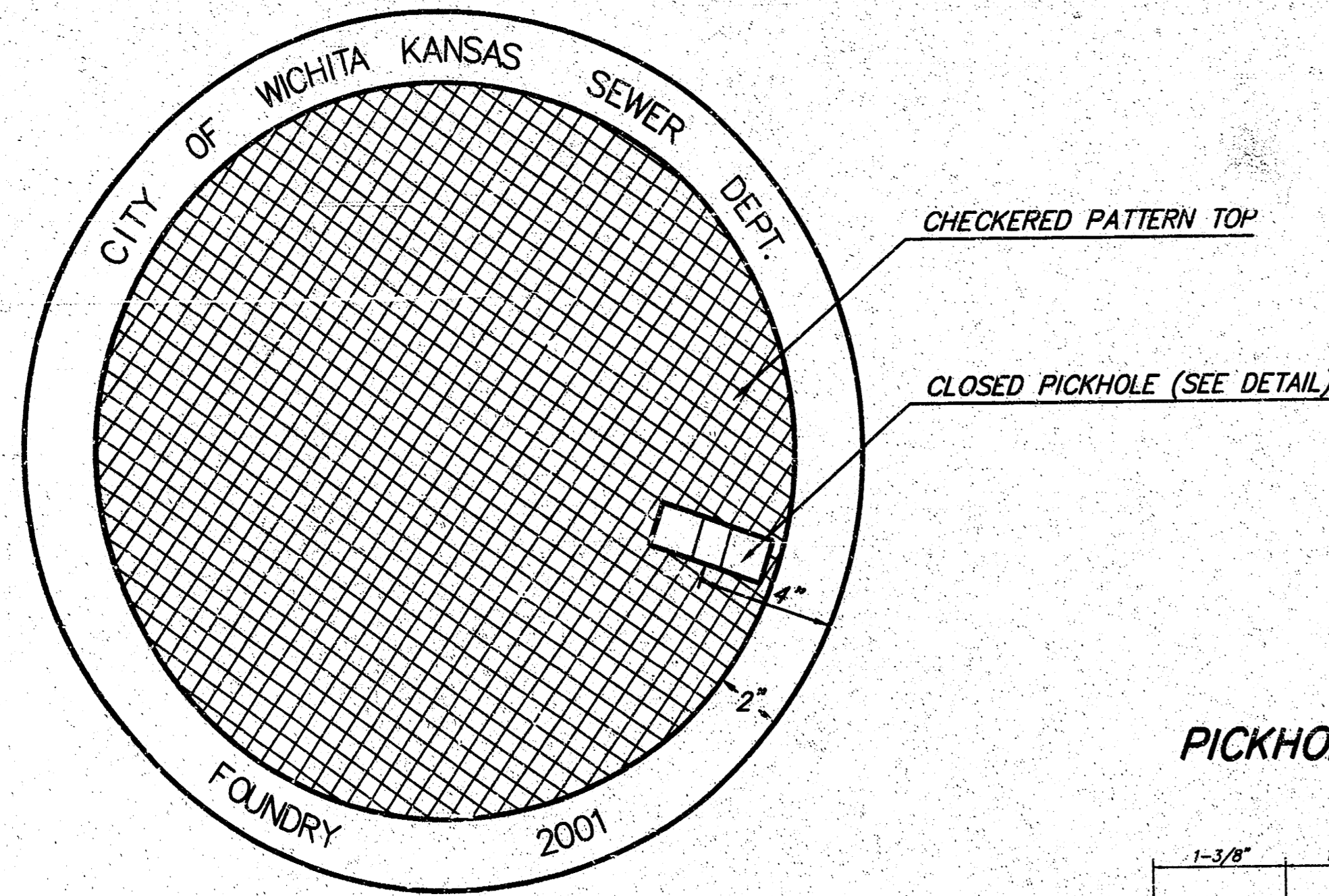
**BAUGHMAN COMPANY, P.A.**  
ENGINEERING, SURVEYING, & PLANNING  
316-282-7271 • 315 ELLIS • WICHITA, KANSAS 67211

SHEET  
3  
OF  
7

# MANHOLE FRAME AND COVER DETAIL

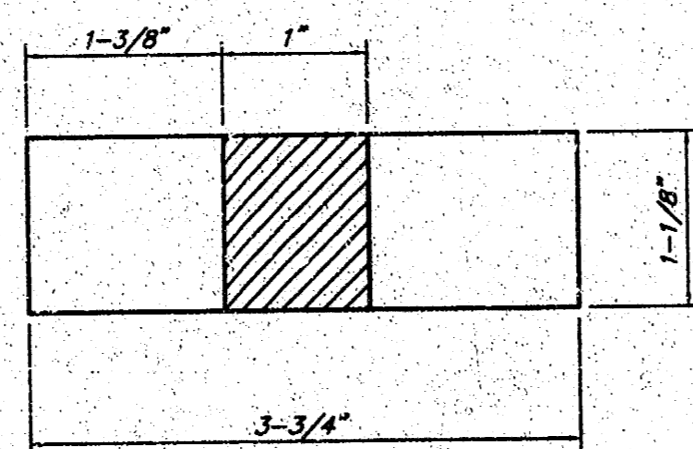
ADOPTED AS STANDARD DESIGN BY  
CITY OF WICHITA, KANSAS

**MANHOLE COVER**  
Weight = 180 Lbs.

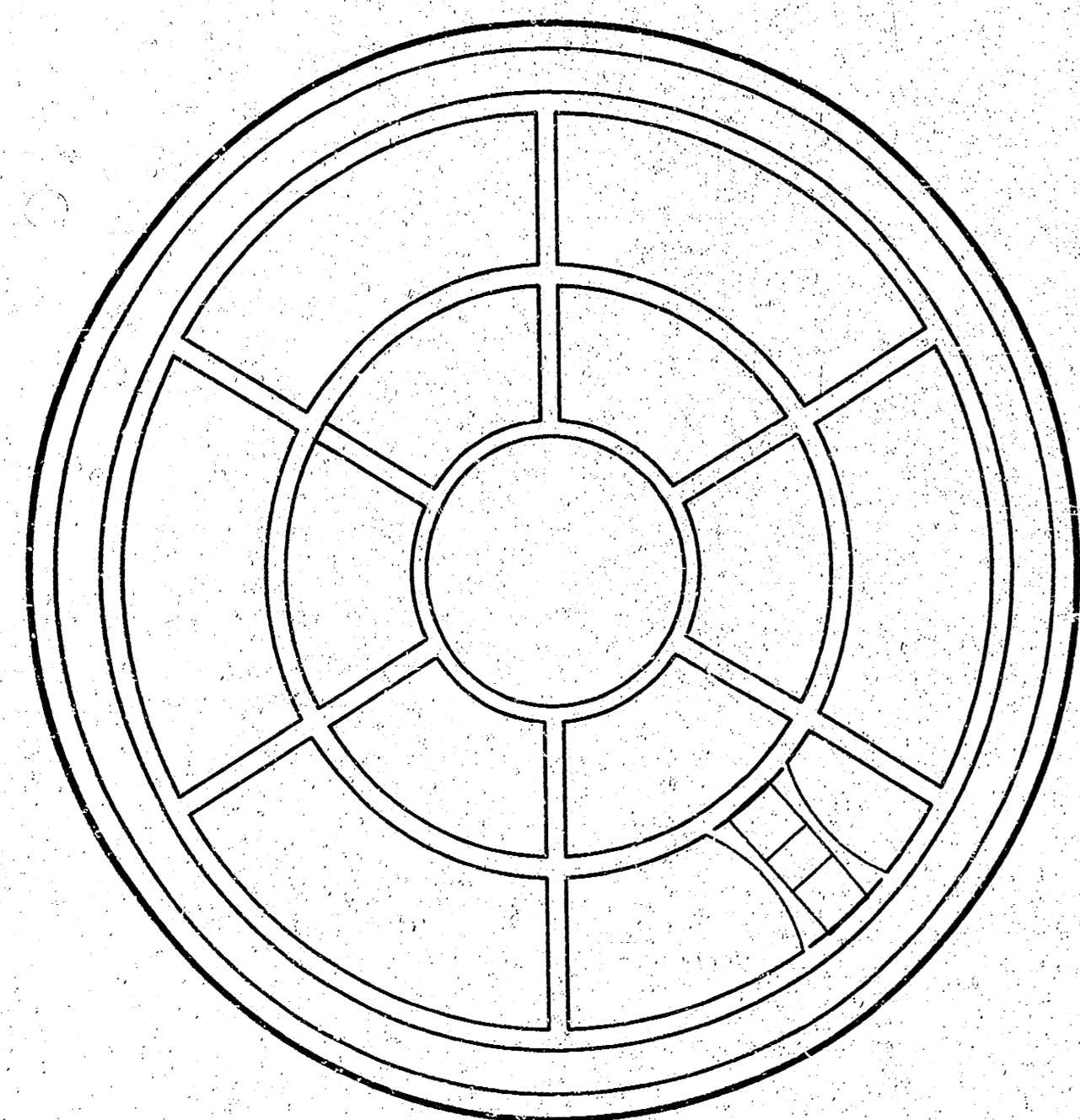


TOP VIEW

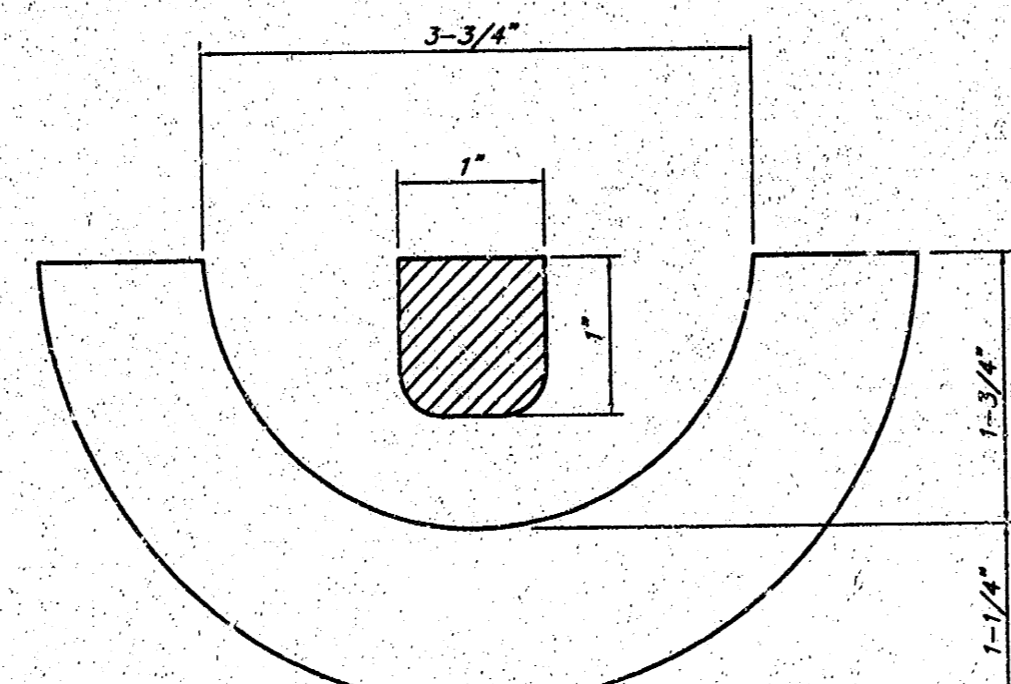
PICKHOLE DETAIL



TOP VIEW

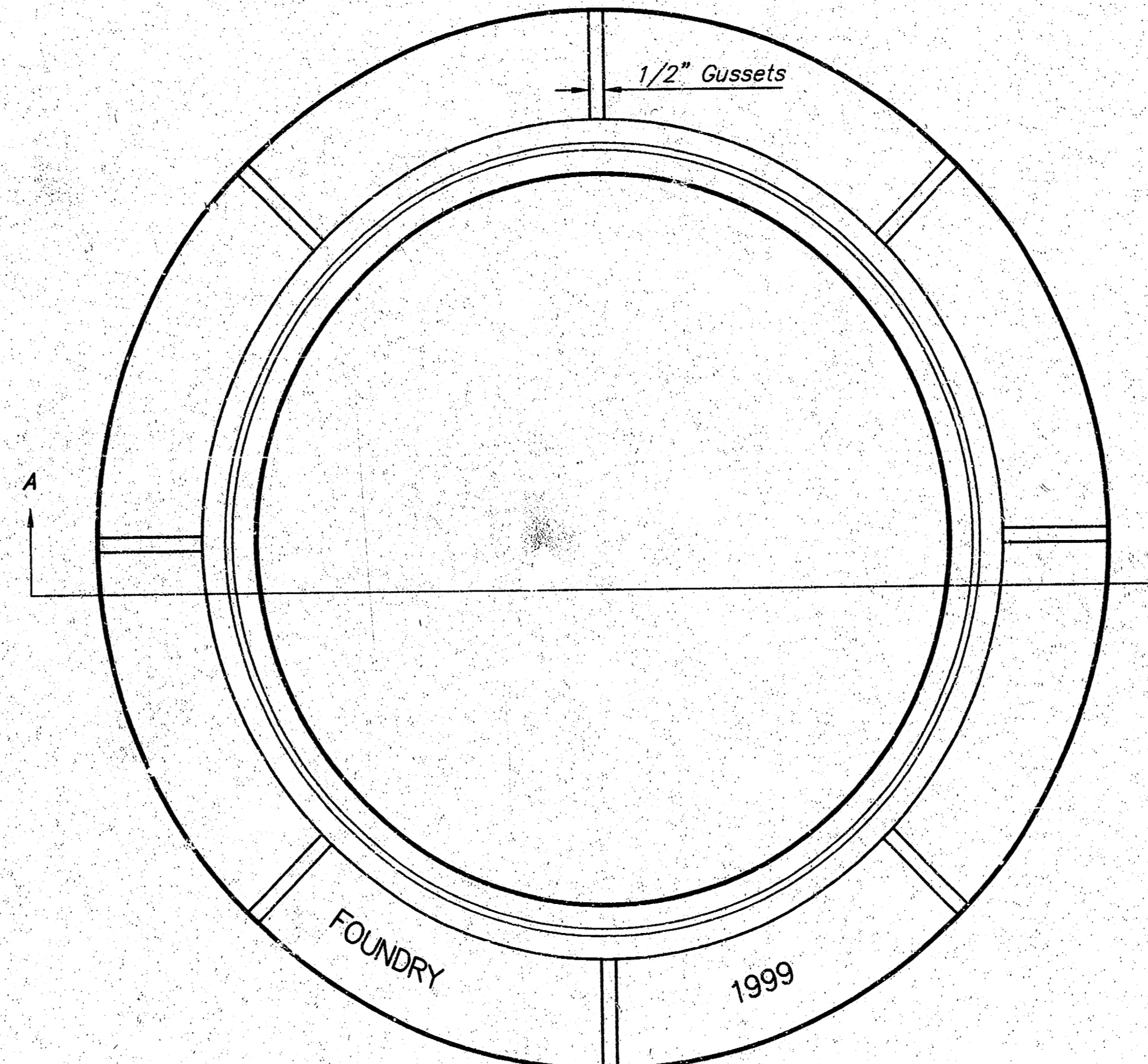


BOTTOM VIEW



SECTION VIEW

**MANHOLE FRAME**  
Weight = 145 Lbs.



TOP VIEW

## GENERAL NOTES

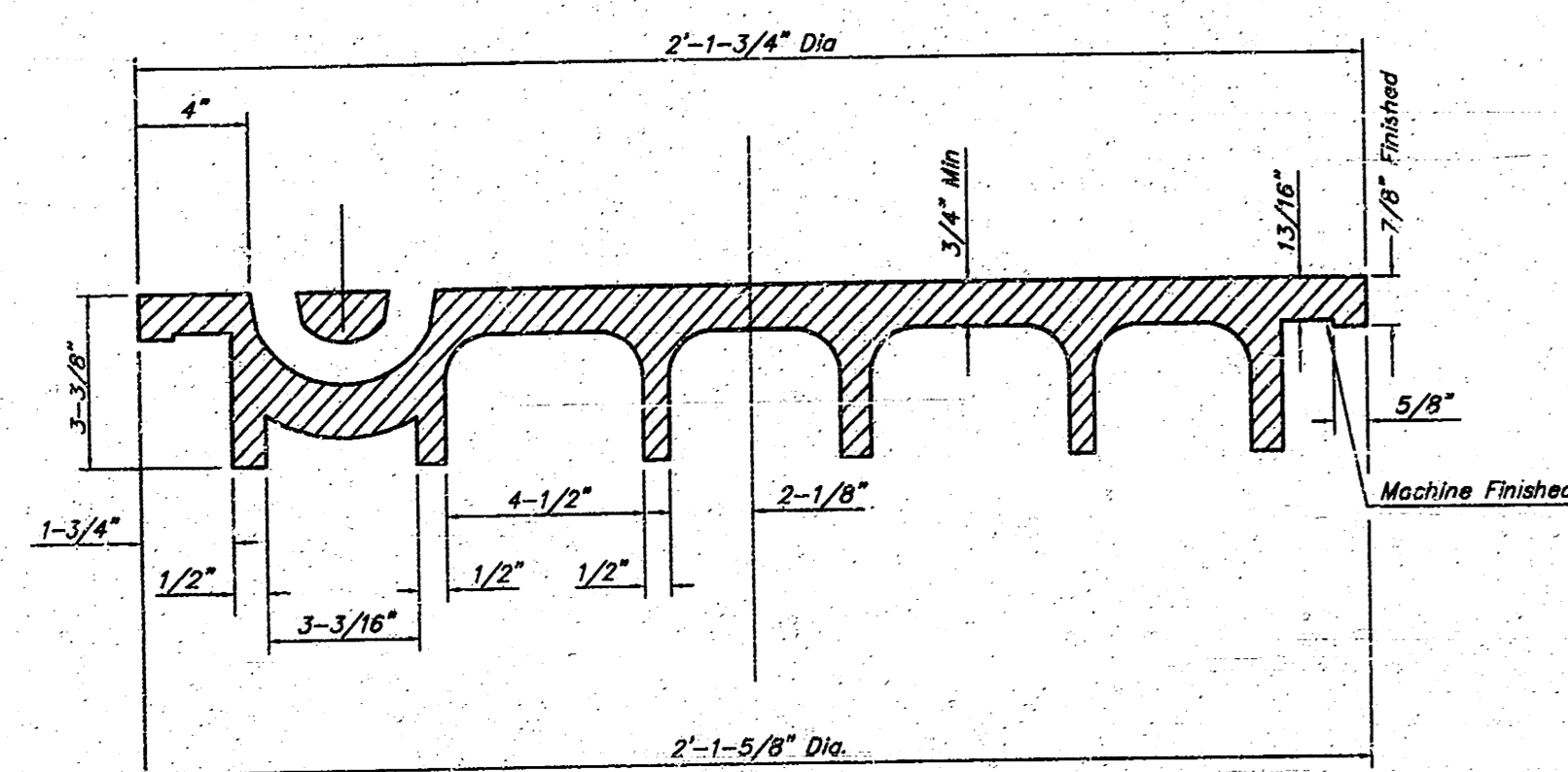
MANHOLE CASTINGS SHALL BE MANUFACTURED USING GOOD QUALITY GRAY IRON CONFORMING TO CLASS 30 OF A.S.T.M. DESIGNATION A-48. DIMENSIONS AND WEIGHTS SHOWN ON THE DETAILED DRAWINGS SHALL BE CONSIDERED AS MINIMUM REQUIREMENTS AND ANY DEVIATIONS FROM THE DIMENSIONS SHOWN MUST BE SPECIFICALLY APPROVED. THE FINISHED CASTINGS SHALL BE OF UNIFORM QUALITY, FREE FROM BLOWHOLES, POROSITY, HARD SPOTS, SHRINKAGE DISTORTIONS OR OTHER DEFECTS.

MANHOLE CASTINGS SHALL BE COATED WITH AN ASPHALT PAINT RESULTING IN A SMOOTH, TOUGH AND TENACIOUS COATING WHICH IS NOT BRITTLE OR TACKY.

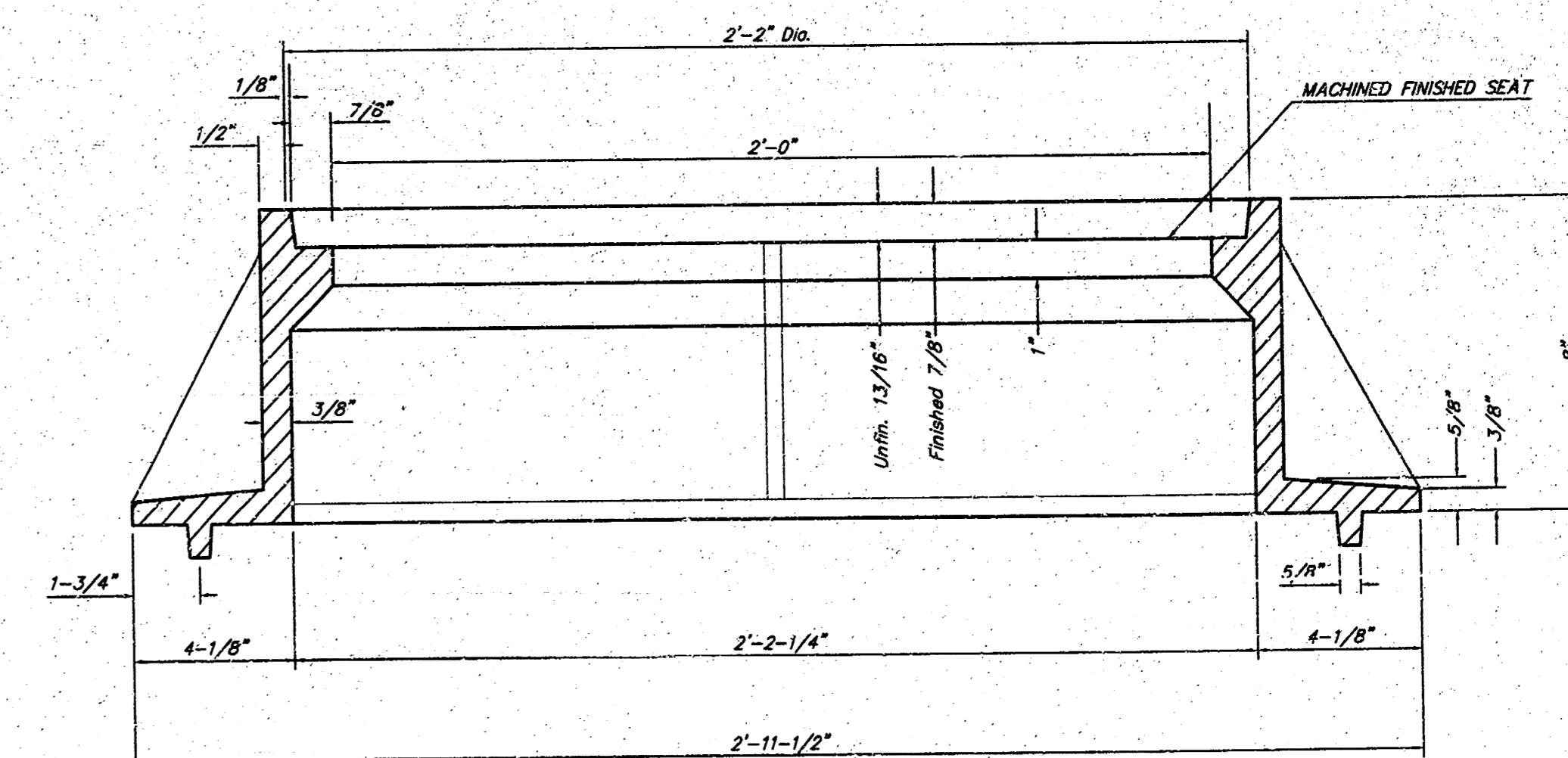
MANHOLE CASTINGS SHALL BE MANUFACTURED SUCH THAT COVER MANUFACTURED BY ANY ONE FOUNDRY WILL FIT INTERCHANGEABLY INTO A FRAME MANUFACTURED BY ANOTHER FOUNDRY AND STILL MEET ALLOWABLE CLEARANCES AND NON-ROCKING REQUIREMENTS. THIS WILL REQUIRE MANUFACTURING OF THE MATCHING FACES ON THE COVER AND THE FRAME TO CLOSE TOLERANCES.

THE OUTSIDE CIRCUMFERENCE OF THE VERTICAL FACE OF THE COVER AND THE INSIDE CIRCUMFERENCE OF THE VERTICAL FACE IN THE FRAME RECESS SHALL BE MANUFACTURED TO TOLERANCES SUCH THAT THE CLEARANCE BETWEEN THE COVER AND FRAME WILL NOT EXCEED 1/8" AT ANY POINT AROUND THE CIRCUMFERENCE OF THE COVER. THE SEATING SURFACES BETWEEN THE COVER AND FRAME SHALL BE MACHINED SUCH AS THESE SURFACES SHALL MAKE FULL CONTACT FOR THEIR FULL CIRCUMFERENCE TO PRECLUDE THE COVER FROM ROCKING IN THE FRAME.

THE MANHOLE FRAME AND COVER SHALL BE MARKED WITH LETTERING INDICATING THE NAME OF THE MANUFACTURER AND THE YEAR WHEN THE COVER OR FRAME WAS CAST. THE COVER SHALL BE FURTHER IDENTIFIED WITH REGARDS TO OWNERSHIP USING LETTERS AT LEAST 1 INCH IN HEIGHT. THIS IDENTIFICATION SHALL BE "CITY OF WICHITA SEWER DEPARTMENT". THE WORD DEPARTMENT MAY BE ABBREVIATED. THE TEXTURE OF THE TOP SURFACE OF THE COVER SHALL BE MANUFACTURED IN A CHECKERED PATTERN DESIGN AS INDICATED ON THE DRAWINGS. SMOOTH BLOCKOUTS SHALL BE UTILIZED TO HIGHLIGHT THE LETTERING ON THE COVER SURFACE. THE TOTAL AREA OF SMOOTH SURFACE BLOCKOUT SHALL NOT EXCEED THE AREA AS INDICATED ON THE DRAWING. POSITIONING OF SMOOTH BLOCKOUTS AND LETTERING MAY VARY FROM THAT SHOWN ON THE DETAILED DRAWING.



SECTION VIEW



SECTION A-A

PROJECT NUMBER 472 83414	SHEET NAME MHRING	ENGINEERING DIRECTORY F:ENGL/Artichoke, Alley
DESIGN C.O.W	DRAWN STAFF	APPROVED
DATE SEPT 01	SCALE NONE	BAUGHMAN NO 00-08-E125

CITY OF WICHITA, KANSAS  
**STANDARD DETAILS for**  
**MANHOLE RING AND COVER**  
ALLEY PAVING - MURDOCK TO 6th Street

**BAUGHMAN COMPANY, P.A.**  
ENGINEERING, SURVEYING, & PLANNING  
316-262-7271 • 315 ELLIS • WICHITA, KANSAS 67211

SHEET  
4  
OF  
7

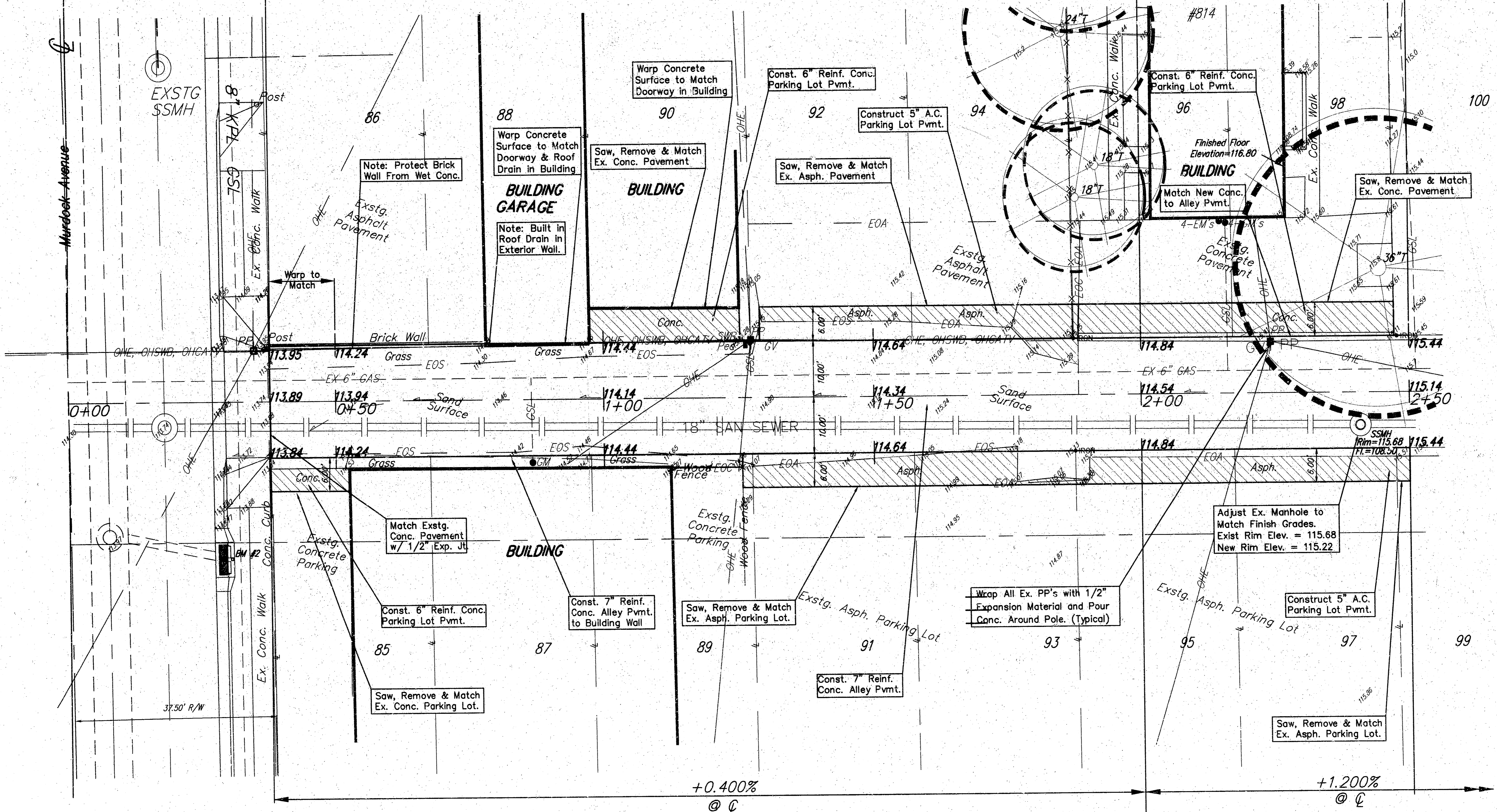
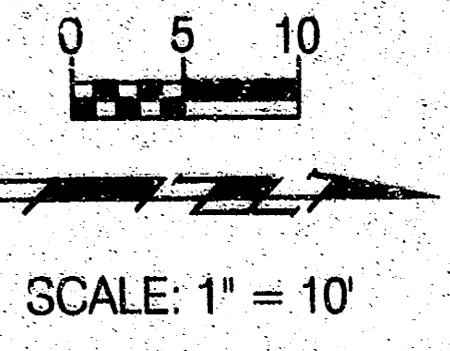
Murdock Avenue  
Sta. 0+00.00

Sta. 0+37.50  
Begin Alley Pvmnt.

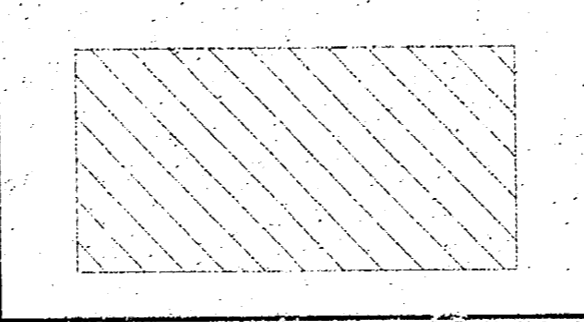
Sta. 2+00.00

Sta. 2+50.00  
Match Line

**BENCHMARKS:**  
BM #2 - 1" Cut, Top of Curb at  $\odot$  of Inlet, north side of Murdock, 25' east of  $\odot$  of Alley between Market and Broadway. Elevation = 113.88 City Datum



**Note:**  
Pavement, Sidewalks, and Etc. To Be Removed Are Indicated By:



PROJECT NUMBER 472-83414	SHEET NAME Pav01	ENGINEERING DIRECTORY F:\Eng\Artichoke\Alley
DESIGN KK/JFB	DRAWN TCA	APPROVED JFB
DATE SEPT01	SCALE 1"=10'	BAUGHMAN NO 01 08 E125

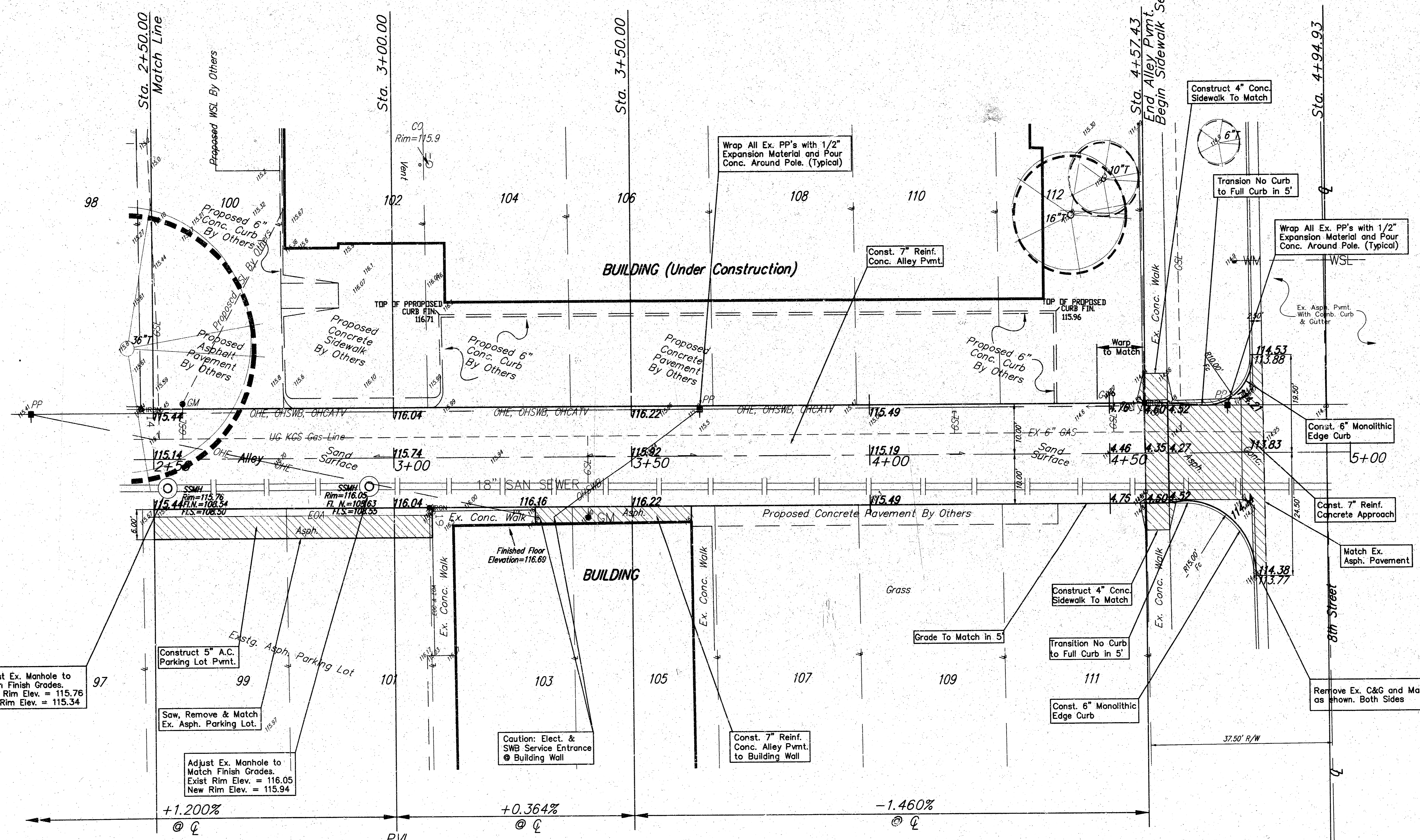
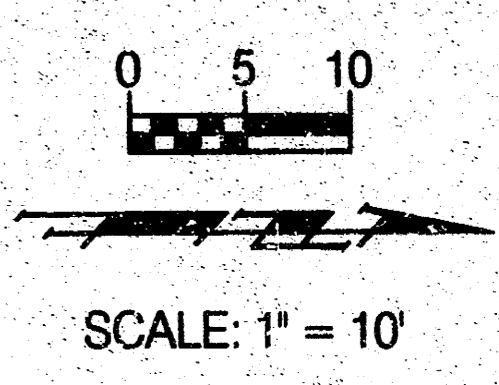
NORTH SOUTH ALLEY  
**PAVING PLANS**  
MURDOCK TO 8th STREET BETWEEN MARKET & BROADWAY

**BAUGHMAN COMPANY, P.A.**  
ENGINEERING, SURVEYING, & PLANNING  
316-282-7271 • 315 ELLIS • WICHITA, KANSAS 67211

SHEET  
5  
OF  
7

F:\Eng\Artichoke\Alley\pav01.dwg Sun Oct 21 16:47:46 2001

**BENCHMARKS:**  
 BM #1: - [Symbol] Cut, Top of Curb south end of return S.E. Corner of 8th & Market.  
 Elevation = 114.59 City Datum



Adjust Ex. Manhole to Match Finish Grades.  
 Exist Rim Elev. = 115.76  
 New Rim Elev. = 115.34

Construct 5" A.C. Parking Lot Pmnt.

Saw, Remove & Match Ex. Asph. Parking Lot.

Adjust Ex. Manhole to Match Finish Grades.  
 Exist Rim Elev. = 116.05  
 New Rim Elev. = 115.94

Caution: Elect. & SWB Service Entrance @ Building Wall

Const. 7" Reinf. Conc. Alley Pmnt. to Building Wall

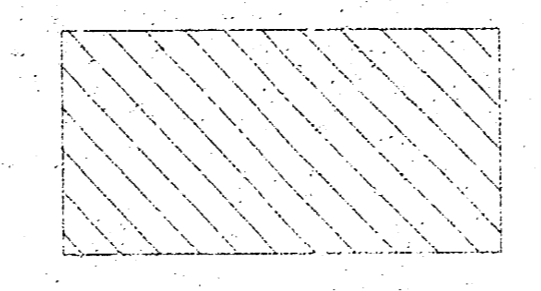
Construct 4" Conc. Sidewalk To Match

Transition No Curb to Full Curb in 5'

Const. 6" Monolithic Edge Curb

Remove Ex. C&G and Match as shown. Both Sides

**Note:**  
 Pavement, Sidewalks, and Etc. To Be Removed Are Indicated By



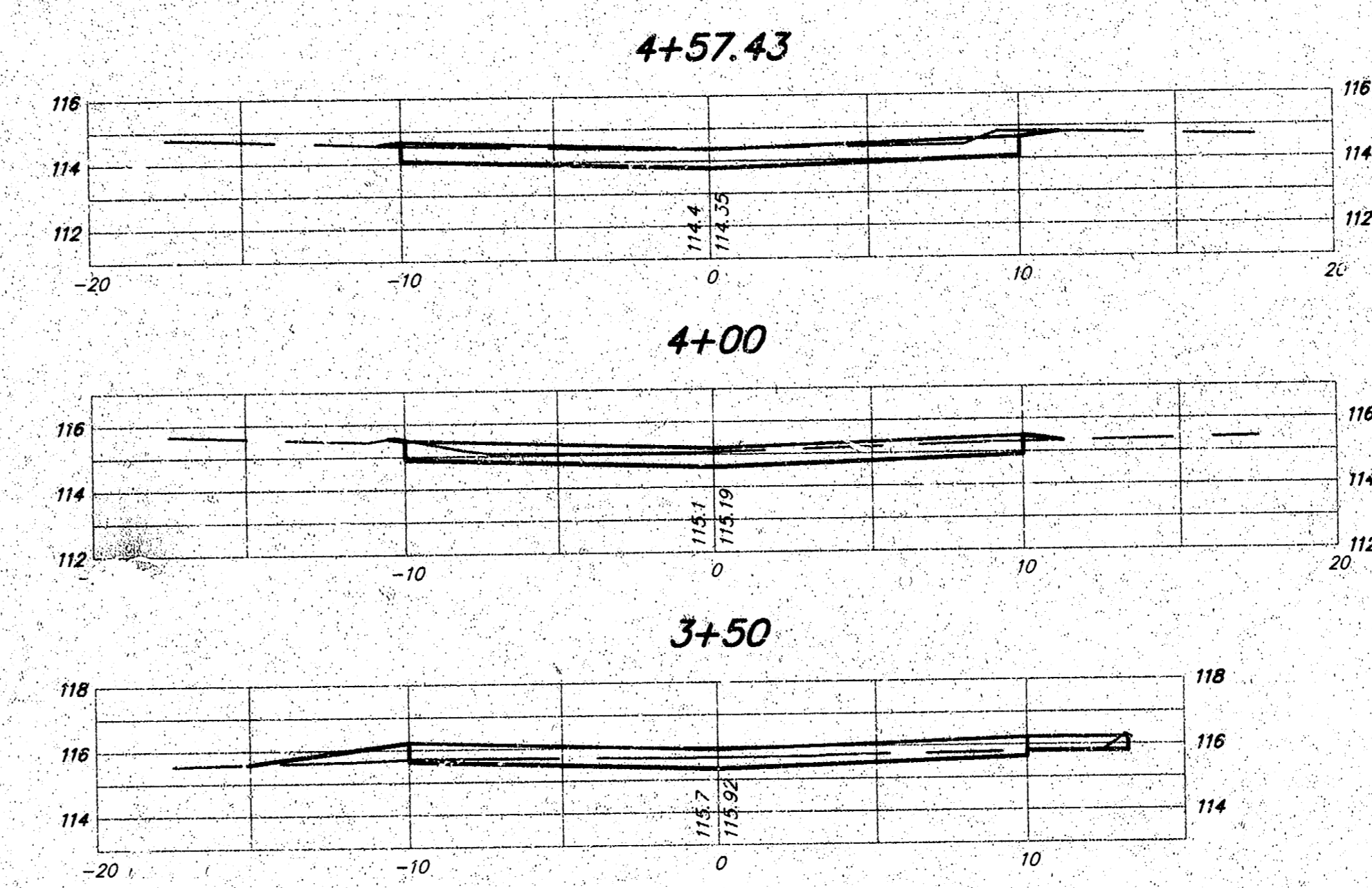
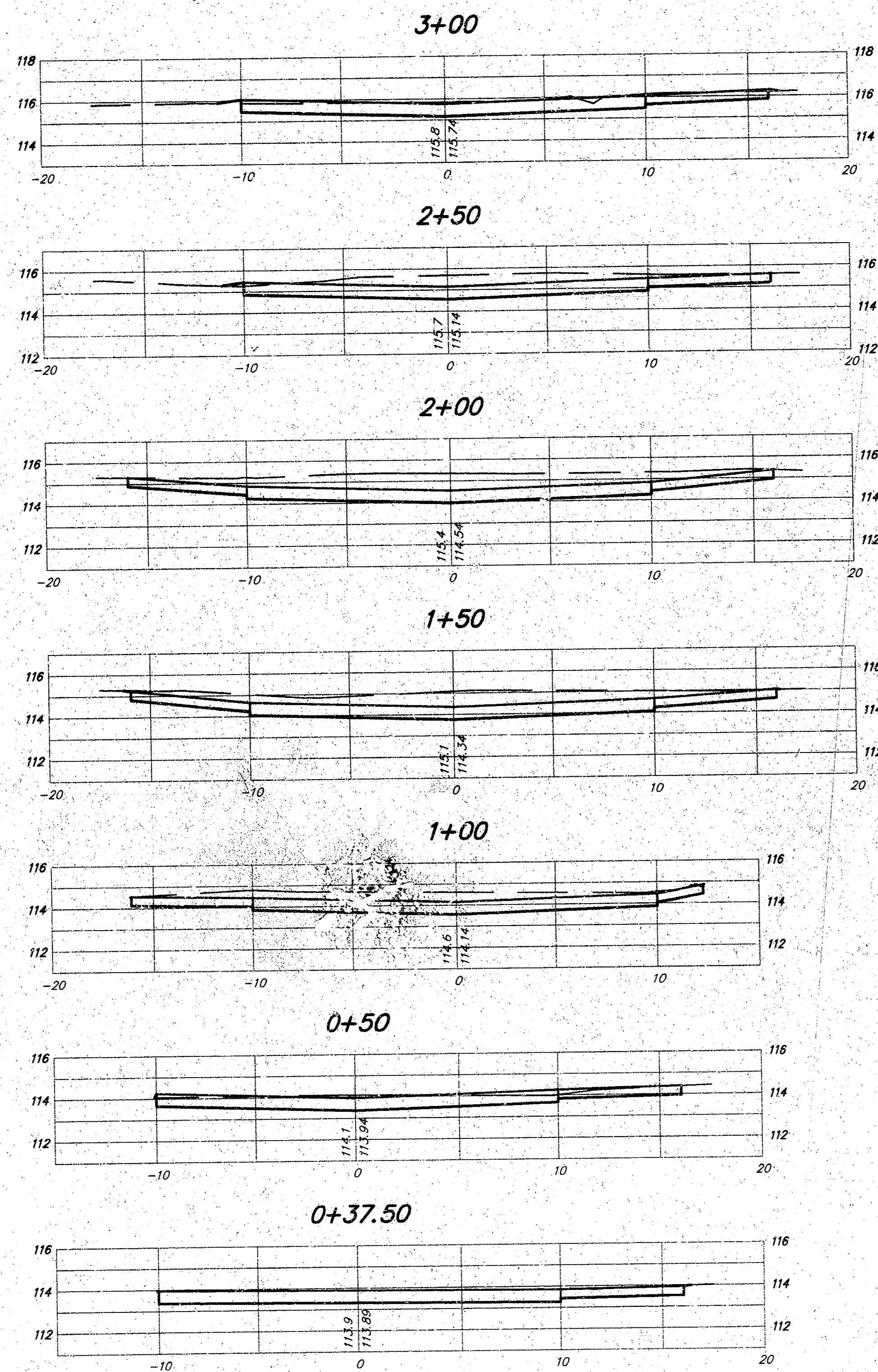
PROJECT NUMBER 472-83414		SHEET NAME Pav02		ENGINEERING DIRECTORY F:Eng:ArtichokeAlley	
DESIGN KK/JFB	DR. IN TCA	APPROVED JFB	DATE SEPT01	SCALE 1"=10'	SALES/ISSUE NO 01 08 E125

NORTH SOUTH ALLEY  
**PAVING PLANS**  
 MURDOCK TO 8th STREET BETWEEN MARKET & BROADWAY

**BAUGHMAN COMPANY, P.A.**  
 ENGINEERING, SURVEYING, & PLANNING  
 316-282-7271 • 315 ELLIS • WICHITA, KANSAS 67211

SHEET  
 6  
 OF  
 7

F:\Eng\Projects\chicks\Alley\pav02.dwg Men Oct 22 14:42:47 2001



STATION	AREAS		VOLUMES		CUMULATIVE VOLUMES	
	CUT	FILL	CUT	FILL	CUT	FILL
0+37.50	14.58	0.50	6.39	0.00	6.39	0.00
0+50	13.04	0.11	33.24	0.01	39.84	0.01
1+00	22.87	0.00	48.40	0.00	88.03	0.01
1+50	28.40	0.00	57.02	0.00	145.05	0.02
2+00	32.18	0.00	46.31	0.09	194.36	0.10
2+50	21.08	0.09	32.43	0.20	226.79	0.30
3+00	13.98	0.12	17.43	1.38	244.22	1.68
3+50	4.88	1.37	11.88	1.38	256.20	3.06
4+00	8.07	0.12	20.14	0.17	276.35	3.22
4+57.43	10.87	0.04	0.00	0.00	276.35	3.22

F:\Eng\Artichoke Alley\XSec.dwg Mon Oct 22 15:22:37 2001

PROJECT NUMBER <b>472 - 83414</b>		SHEET NAME XSEC		ENGINEERING DIRECTORY E:\Eng\Artichoke Alley		NORTH SOUTH ALLEY		<b>BAUGHMAN COMPANY, P.A.</b> ENGINEERING, SURVEYING, & PLANNING 316-262-7271 • 315 ELLIS • WICHITA, KANSAS 67211	SHEET 7
DESIGN JFB/KK	DRAWN STAFF	APPROVED JFB	DATE SEPT 01	SCALE 1:5	BAUGHMAN NO 01 08 E125	<b>Cross Sections &amp; Earthwork Quantities</b> <small>MURDOCK TO 8th STREET BETWEEN MARKET &amp; BROADWAY</small>			OF 7

14-03-05-15