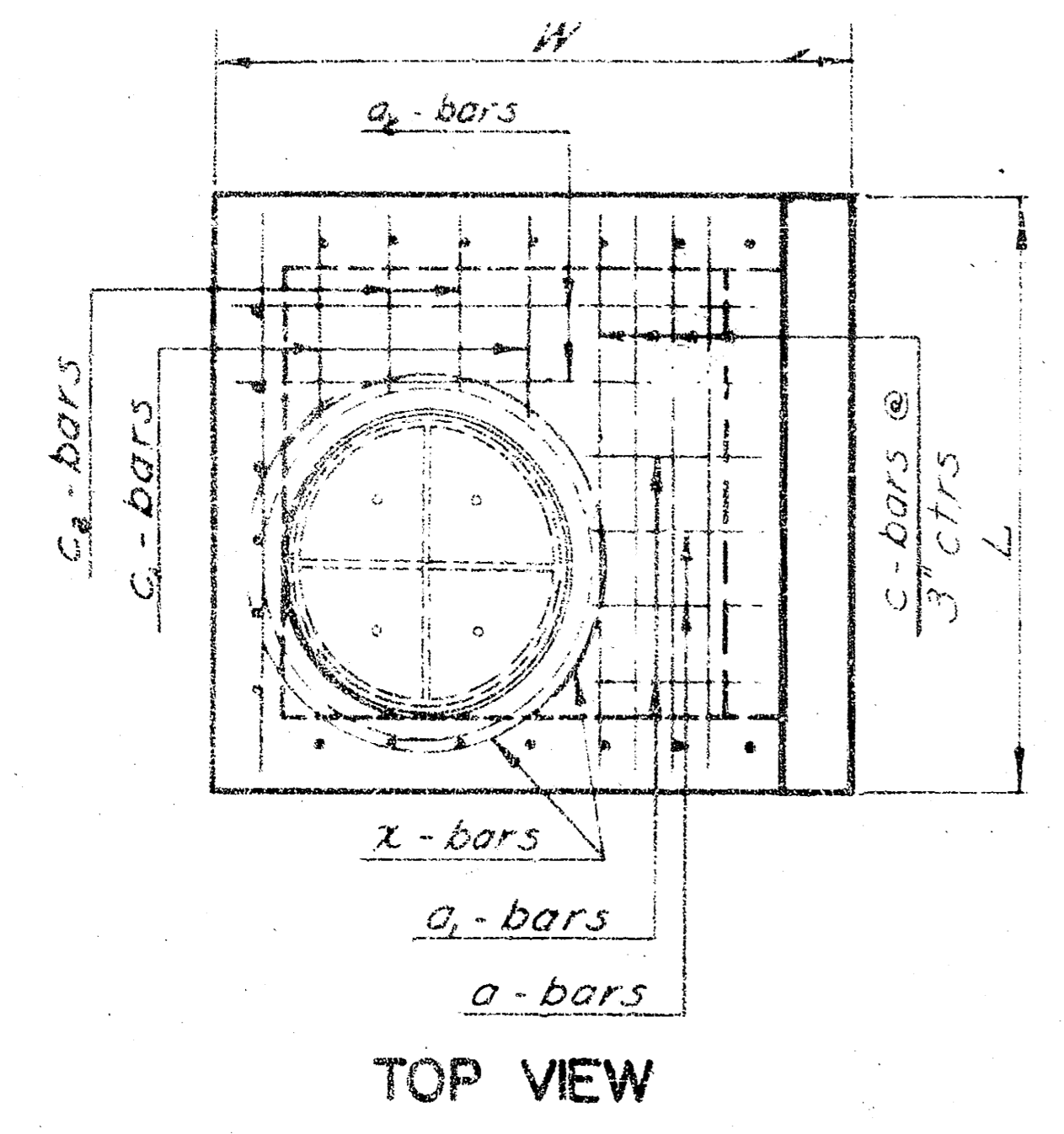
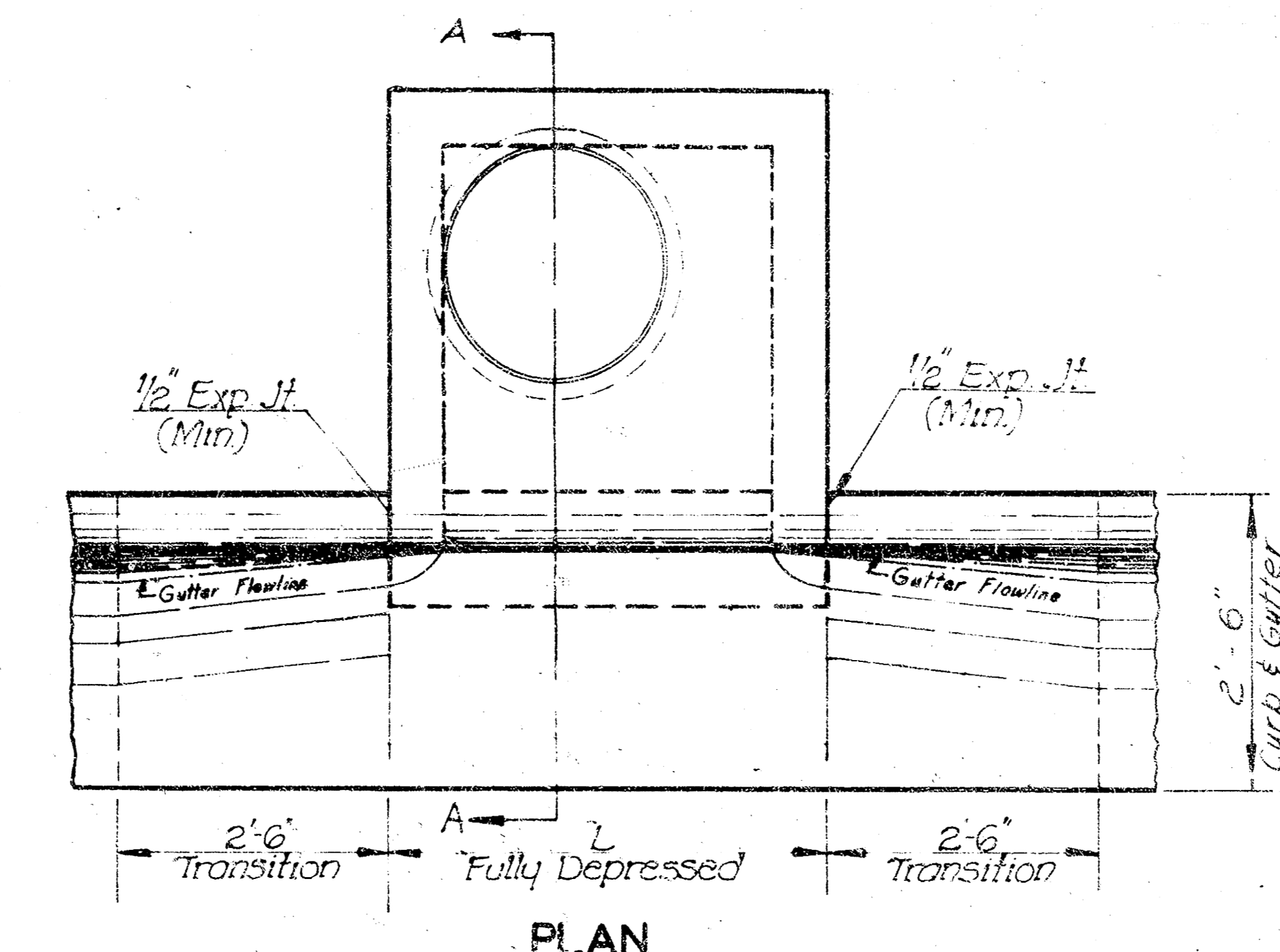


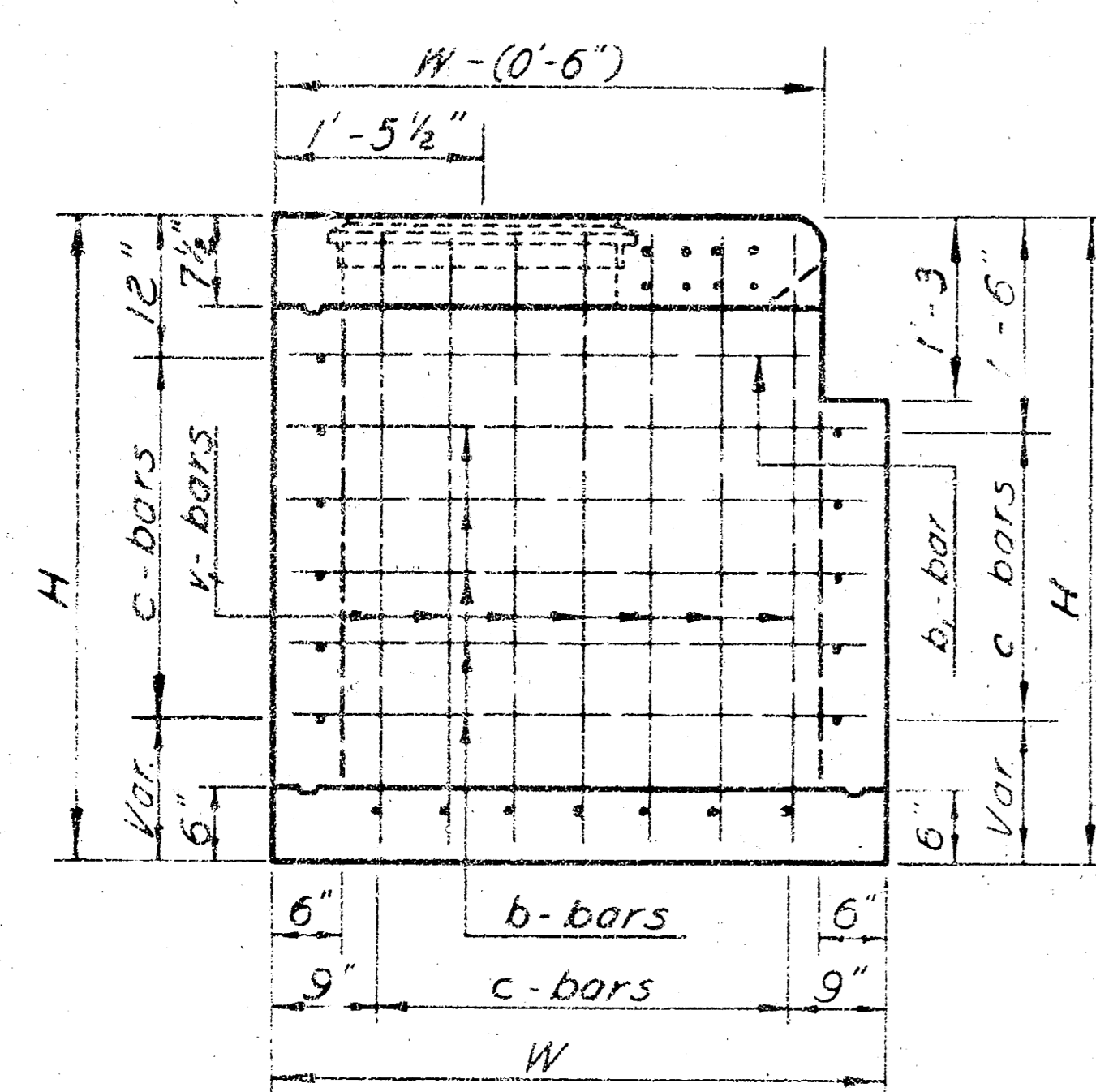
FHWA NO.	STATE	PROJECT NO.	YEAR	SHEET NO.	TOTAL SHEETS
7	KANSAS		197		



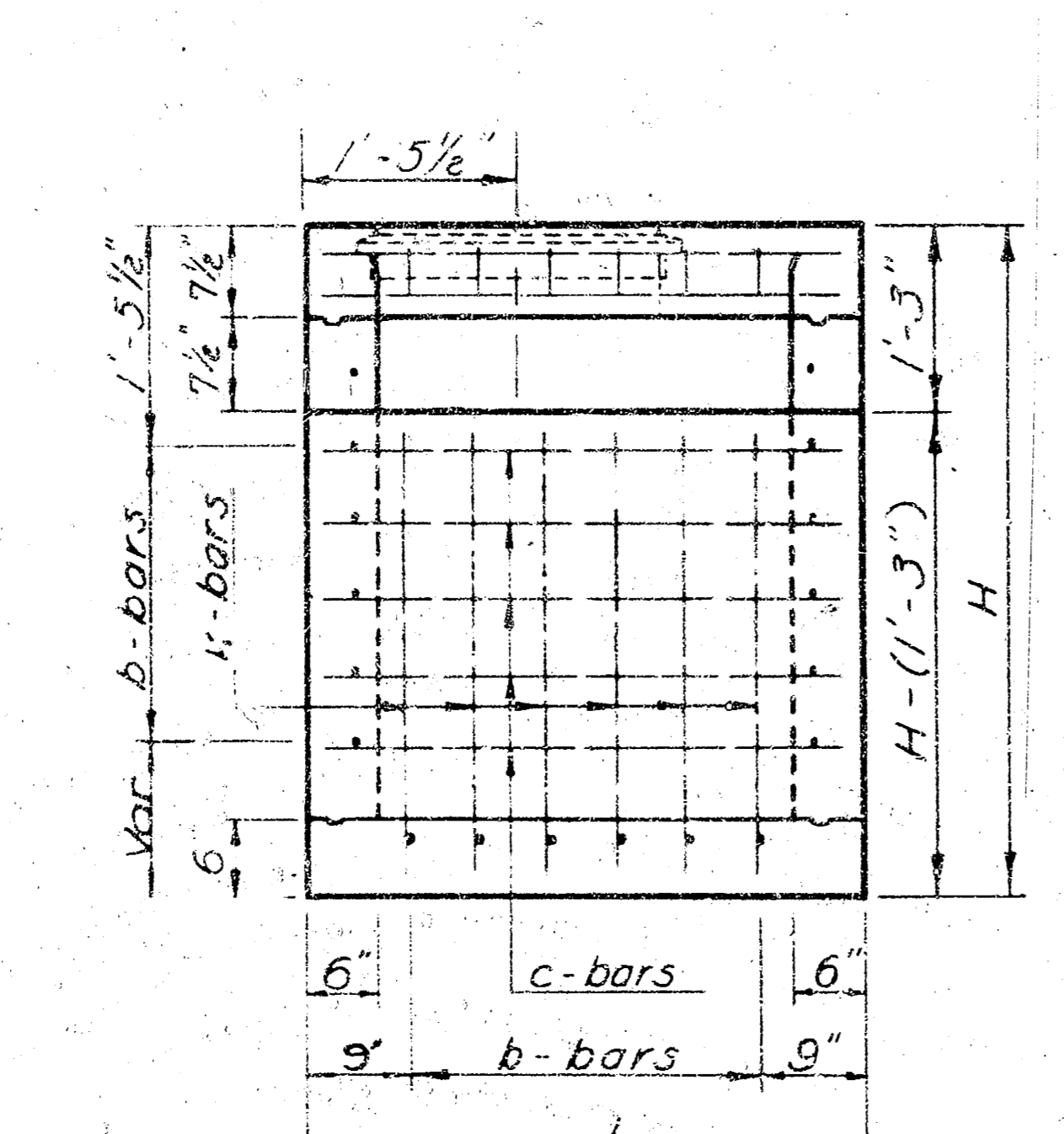
TOP VIEW



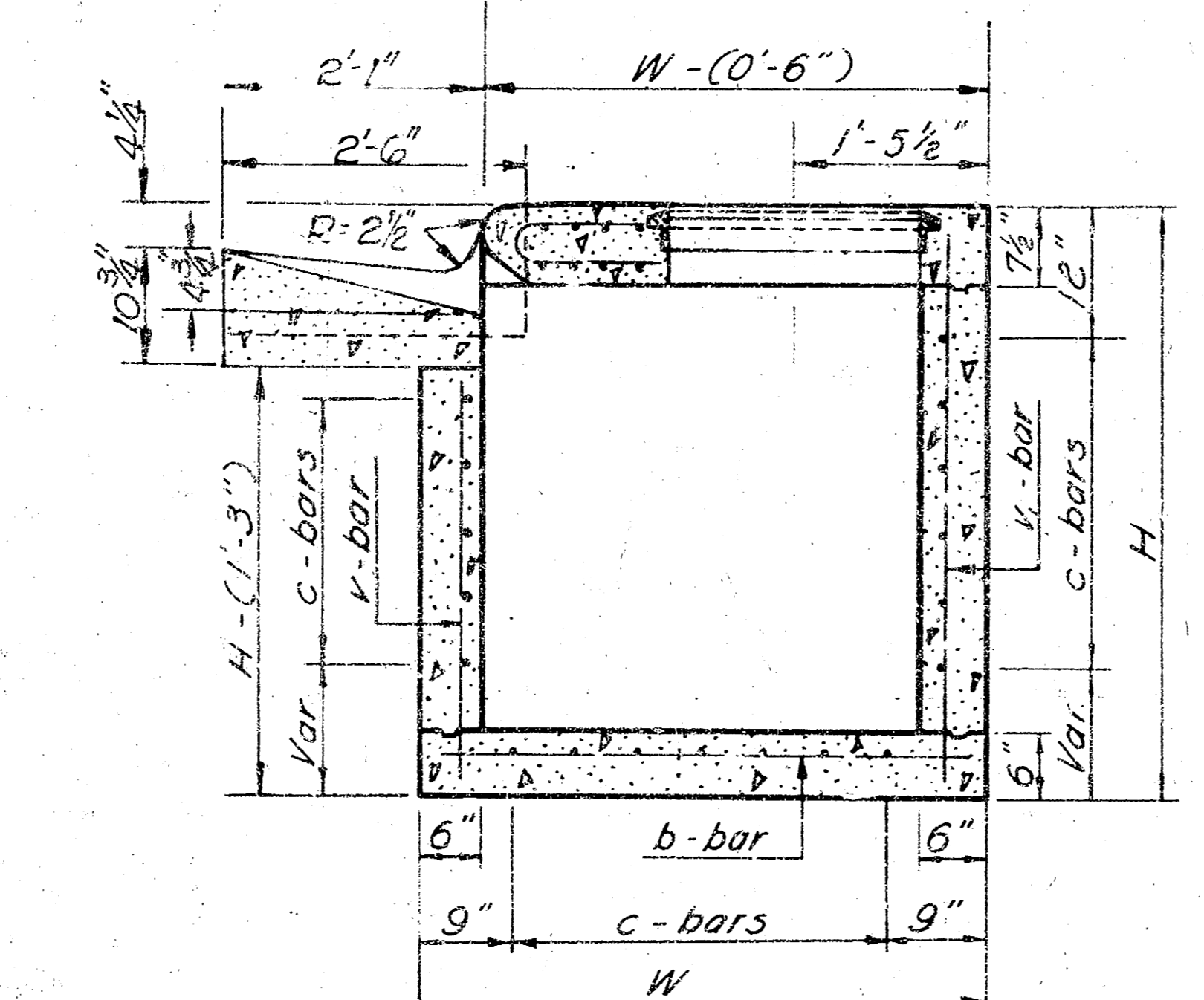
PLAN



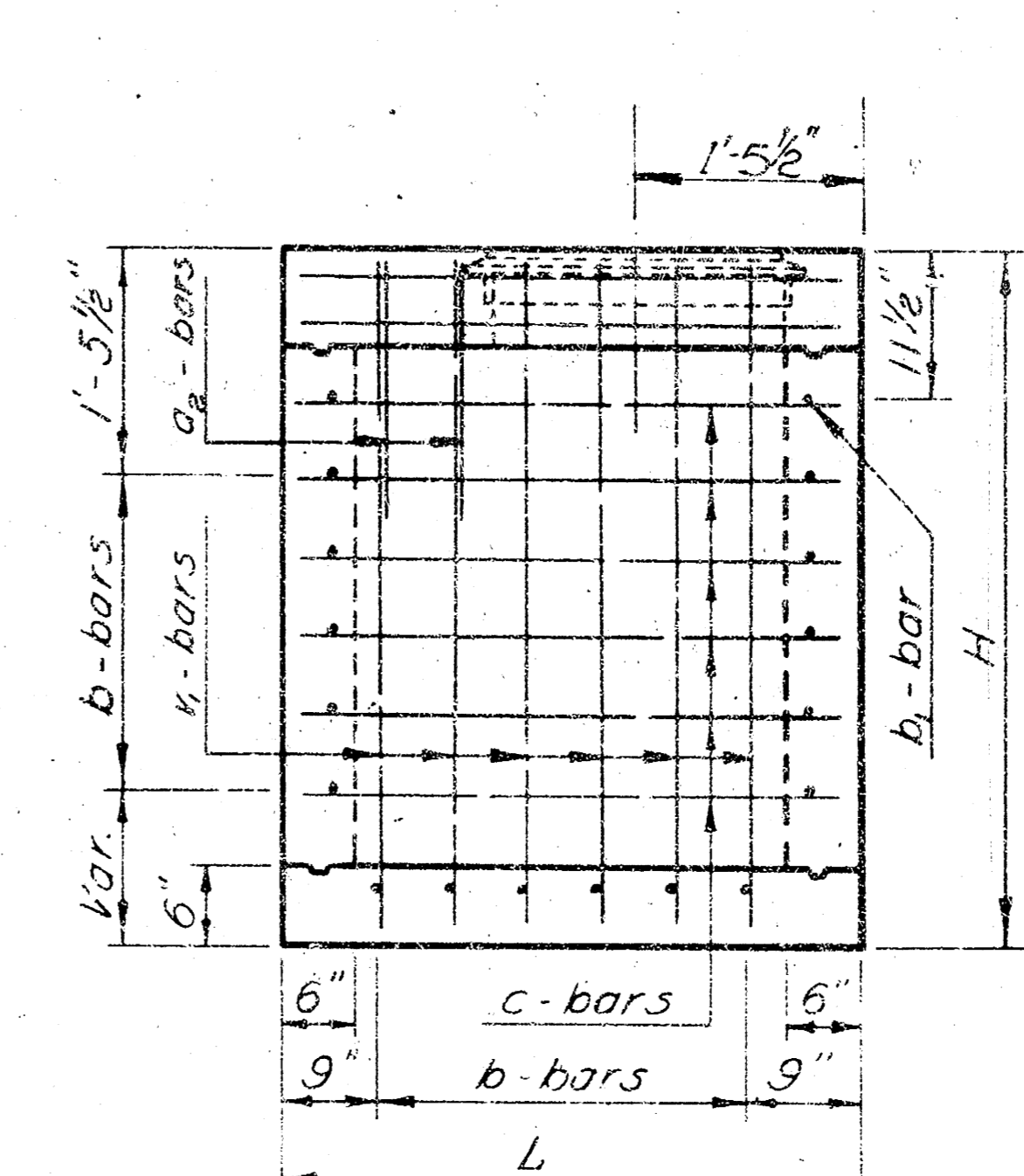
SIDE VIEW



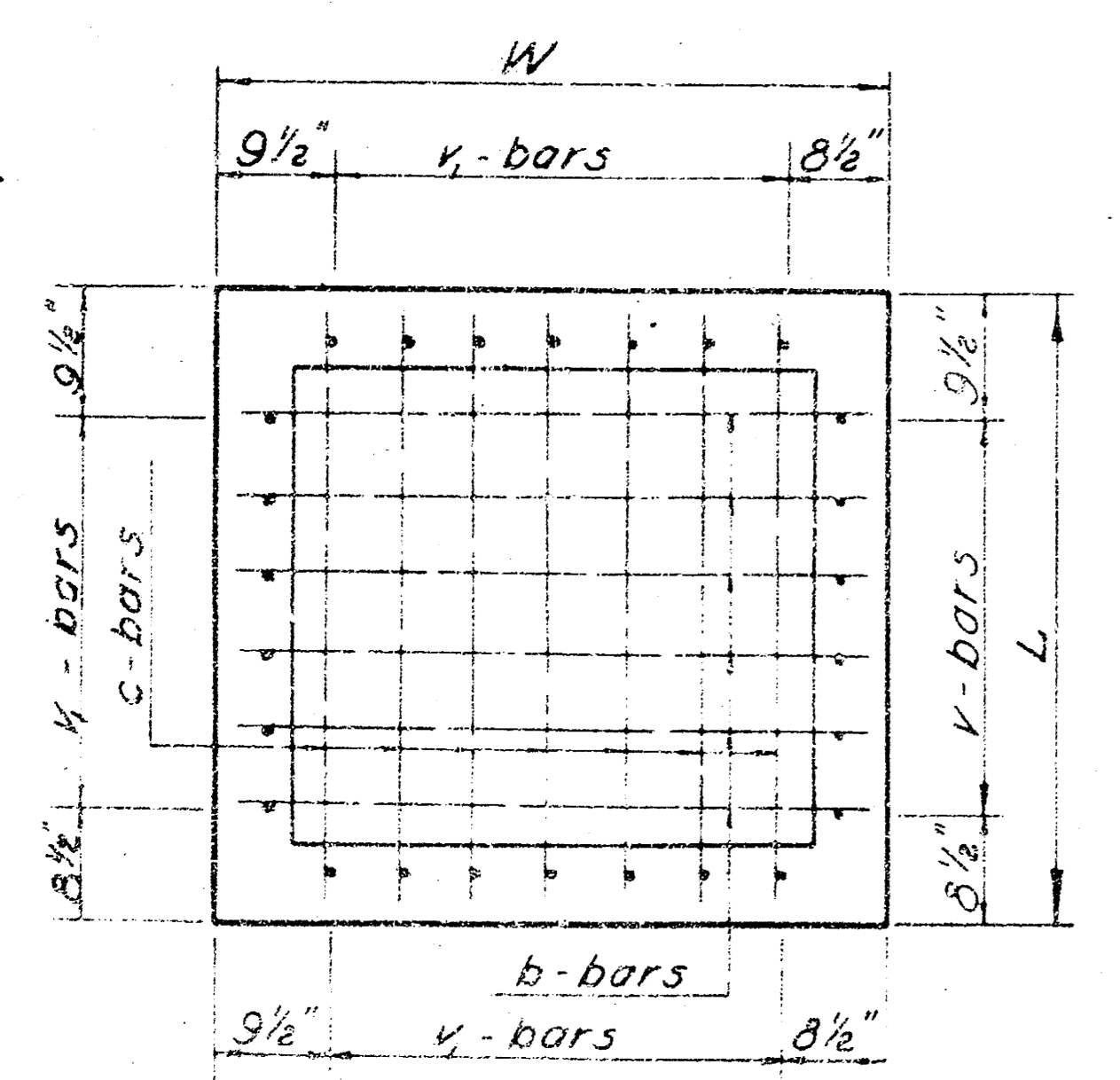
FRONT VIEW



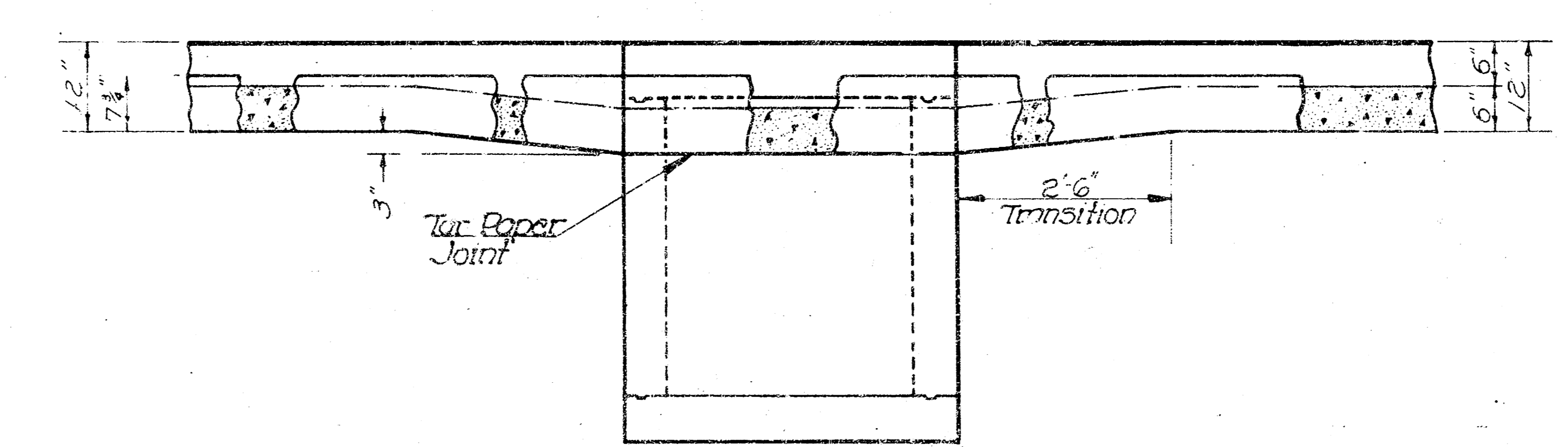
SECTION A-A



REAR VIEW



BOTTOM VIEW



GENERAL NOTE

CONCRETE
Storm Sewer Inlets shall be constructed of either Class A Concrete or Class A Concrete (A.E.) at the Contractor's option. However, payment shall be made for cubic yards of Class A concrete (Miscellaneous).
Bevel all exposed 90° concrete edges with a 3/4" triangular bevel.

CAST IRON
All exposed cast iron surfaces not subject to traffic shall receive one coat of a zinc dust paint applied either in the shop or in the field and two coats of aluminum paint applied in the field.
Cast iron steps shall be installed in all storm sewer inlets with an H dimension greater than 6 ft.
See plan sheet entitled CAST IRON LID AND FRAME ASSEMBLIES for fabrication details.

REINFORCING STEEL
All dimensions relative to reinforcing steel are to the center of bars unless otherwise noted on the plans.
Reinforcing steel shall be spaced at 6" centers and shall be 1-1/2" clear distance from slab surfaces unless otherwise shown on the plans.
All reinforcing steel shall be placed within ± 1/4" of plan dimension unless waived by the Engineer.
Reinforcing steel shall be bent around all pipes unless otherwise directed by the Engineer.
See plan sheet entitled REINFORCING STEEL FOR INLETS AND JUNCTIONS for reinforcing steel quantities and fabrication details.

MISCELLANEOUS
When directed by the Engineer the top of the inlet shall be sloped in order to match the longitudinal roadway grade ground line and/or other conditions.
When directed by the Engineer small openings may be required in the back of the inlet in order to drain a low area. No deductions in concrete quantities will be made for these openings.
Expansion joint material shall be either poured joint sealing compound (hot or cold) or pre-molded joint filler (non-extruding Type B) unless otherwise noted on the plans.
Inlet floors shall be shaped as shown on the plan sheet entitled TYPICAL FLOOR SHAPING FOR INLETS AND JUNCTIONS. No concrete quantities shall be computed for this work.
Gutter shaping shall be accomplished as shown and payment shall be subsidiary to the adjacent type of curb and gutter.

DRAINAGE
IN CONNECTION WITH PAVING
Newell Street From A Point 74.79 Ft. East Of The W.L. Lot 11, Blk. A, Central Heights Second Addition To The W.L. Ridge Road; Also Acadia Lane From The N.L. Lot 16, Blk. L, Meadowview Estates To & Including Cul-De-Sac
30' F-F 6" Conc. Pavmt With Integral Curb
City of Wichita, Kansas
R. W. Linn City Engineer
Proj. No. 472 76 245 80393 000 000 002
Date:

NO.	DATE	REVISIONS	APP.

STATE HIGHWAY COMMISSION OF KANSAS

TYPE 22
CURB INLET

SHEET NO. 2 OF 2	SCALE	APPD.	TRACED
DESIGNED	DETAILED	QUANTITIES	TRACED
DESIGN CK	DETAIL CK	CHECK CK	TRACED