

CITY OF WICHITA, KANSAS
 MICHAEL E. LINDEBAK, P.E., CITY ENGINEER
STREET IMPROVEMENTS

FOXCHASE - A HAMMERHEAD TO SERVE LOT 37, BLOCK 2 OAK CLIFF ESTATES 5TH ADDITION
 MILLPOND - A HAMMERHEAD TO SERVE LOT 36, BLOCK 2 OAK CLIFF ESTATES 5TH ADDITION

IN
OAK CLIFF ESTATES 5TH ADDITION - PHASE 4
 CITY OF WICHITA PRIVATE PROJECT NO. 075PPP
 INDEX NO. 607379

INDEX OF SHEETS

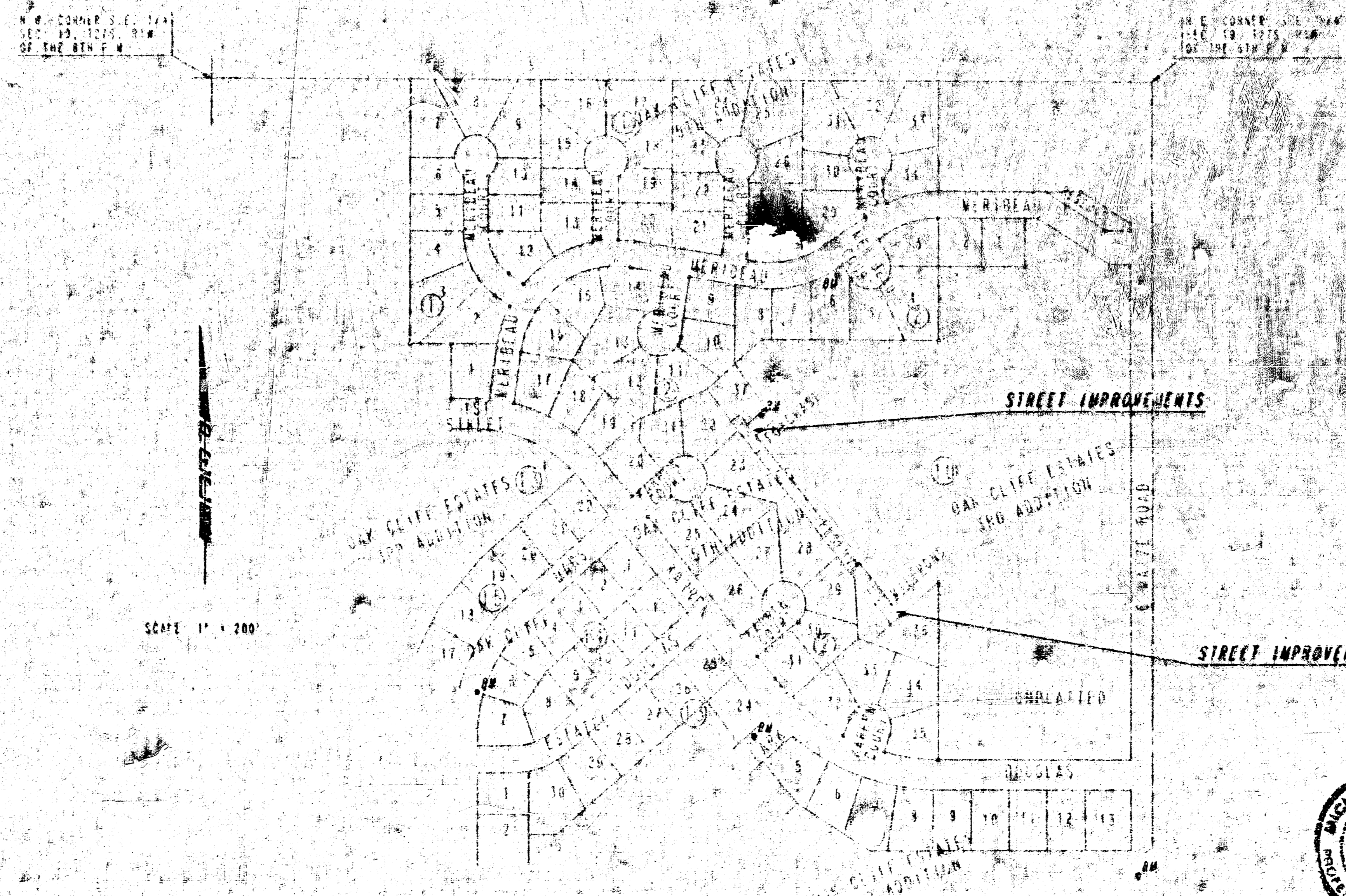
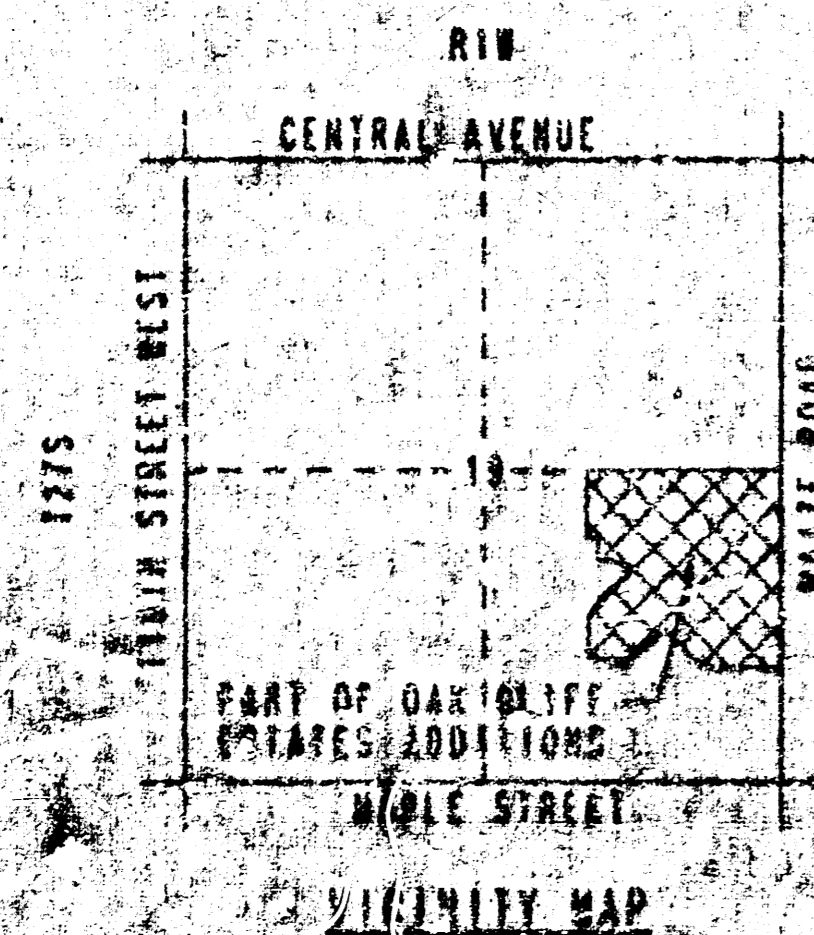
- 1. TITLE SHEET
- 2. PLANS
- 3. DETAIL
- 4. VALLEY CUTTER DETAILS
- 5. PAVING PLAN - FOXCHASE AND MILLPOND
- 6. MISCELLANEOUS PAVING DETAILS
- 7. STD. TYPE 14 CURB INLET DETAILS

PROJECT SURVEY CONTROL

- BENCH MARK: EXISTING 1" POST 8' SOUTH OF P. ROAD, BLOCK 2 OAK CLIFF ESTATES 5TH ADDITION, ELEV. 142.66
- BENCH MARK: CHISELED "O" ON TOP OF CONCRETE DRIVE IN LOT 24, BLOCK 2 OAK CLIFF ESTATES 5TH ADDITION, ELEV. 141.12
- BENCH MARK: CHISELED "O" ON TOP OF CONCRETE DRIVE IN LOT 24, BLOCK 2 OAK CLIFF ESTATES 5TH ADDITION, ELEV. 141.12
- BENCH MARK: CHISELED "O" ON TOP OF CONCRETE DRIVE IN LOT 24, BLOCK 2 OAK CLIFF ESTATES 5TH ADDITION, ELEV. 141.12
- BENCH MARK: RAILROAD SPIKE IN EAST FACE OF POWER POLE SOUT. OF DOUGLAS AND WEST OF WATZ ROAD, ELEV. 137.32

EARTHWORK

PROJECT LENGTH 33.5 L.W. FT.
 EARTHWORK SHALL BE SUBSIDIARY TO OTHER BID ITEMS, SEE SH. NO. 7.



AUGUST, 1992
 PLANS PREPARED BY
PROFESSIONAL ENGINEERING CONSULTANTS, P.A.
 ENGINEERS
 WICHITA, KANSAS



APPROVED AS NOTED
 BY CITY ENGINEER OF WICHITA

SANITARY SEWERS _____
 STORM _____
 DRIVEWAY APPROACHES _____
 WATER MAINS _____
 PAVING _____

GENERAL NOTES

- THIS PROJECT SHALL BE CONSTRUCTED IN ACCORDANCE WITH THE TECHNICAL REQUIREMENTS SET FORTH IN CITY OF WICHITA CONCRETE PAVEMENT SPECIFICATIONS FORM 192-058, OCTOBER 1984, AS MODIFIED BY APPROPRIATE SUPPLEMENTARY PROVISIONS.
- THE CONTRACTOR SHALL SUBMIT A LUMP SUM PRICE FOR THE PROJECT COMPLETE AND IN PLACE. NO MEASUREMENT OF INDIVIDUAL ITEMS WILL BE MADE. REFERENCES TO THE PLANS OR SPECIFICATIONS TO PAYMENT FOR INDIVIDUAL BID ITEMS ARE HEREBY DELETED. THE CONTRACTOR SHALL SATISFY HIMSELF AS TO THE QUANTITIES REQUIRED FOR CONSTRUCTION.
- THE CONTRACTOR SHALL PERFORM ANY AND ALL SUBSURFACE TESTING AND/OR EXPLORATION REQUIRED TO PREPARE HIS BID.
- THE CONTRACTOR SHALL ERECT AND MAINTAIN CONSTRUCTION TRAFFIC CONTROL DEVICES IN ACCORDANCE WITH THE MANUAL ON UNIFORM TRAFFIC CONTROL DEVICES AND IN CONFORMANCE WITH THE WICHITA BARRICADE MANUAL. NO SEPARATE MEASUREMENT OR PAYMENT WILL BE MADE FOR THIS WORK.
- UNDERGROUND UTILITY SERVICE LINES AND OVERHEAD UTILITY POLE LINES ARE TO BE ADJUSTED AS NECESSARY BY OTHERS PRIOR TO CONSTRUCTION UNLESS THE PLANS SPECIFICALLY CALL FOR THEIR ADJUSTMENT BY THE CONTRACTOR. EXISTING UTILITY LINES AND THEIR LOCATION AS SHOWN ON THE PLANS REPRESENT THE BEST INFORMATION OBTAINABLE FOR DESIGN. LOCATION INFORMATION HAS BEEN OBTAINED FROM THE VARIOUS UTILITY COMPANIES AND IS EITHER FROM COMPANY RECORDS OR BY COMPANY PROVIDED FIELD LOCATIONS. CONSTRUCTION SHALL BE RESPONSIBLE TO WORK AROUND EXISTING UTILITIES WITHIN THE RIGHT-OF-WAY WHICH ARE IN CONFLICT WITH PROPOSED CONSTRUCTION.
- TREES AND SHRUBS IN PUBLIC RIGHT-OF-WAY WHICH ARE IN DIRECT CONFLICT WITH PROPOSED CONSTRUCTION SHALL BE REMOVED BY THE CONTRACTOR WITH THE ENGINEER'S APPROVAL. TREES AND SHRUBS WHICH ARE NOT IN DIRECT CONFLICT WITH PROPOSED CONSTRUCTION SHALL BE SAVED AND PROTECTED FROM DAMAGE.
- STRUCTURE FROM THE REMOVAL OF MISCELLANEOUS STRUCTURES SHALL BE DISPOSED OF ON SITE TO BE PROVIDED BY THE CONTRACTOR AND APPROVED AS NOTED BELOW.
- ALL DISPOSAL MUST BE APPROVED BY THE ENVIRONMENTAL DEPARTMENT OF HEALTH AND ENVIRONMENT. MATERIAL EITHER STOCKPILED OR DISPOSED OF IN A ROAD PLAIN MUST BE ON A GRADE SURFACE OR A DRAINAGE DITCH. ALL MATERIAL MUST BE DISPOSED IN ACCORDANCE WITH THE FEDERAL AND STATE REGULATIONS. ANY MATERIAL BURIED OR STOCKPILED BEYOND APPROVED CONSTRUCTION LIMITS SHALL REQUIRE AN ARCHITECTURAL AND ENGINEERING DESIGN TO BE A PERMANENTLY APPROVED DISPOSAL LOCATION.
- CONTRACTOR SHALL SATISFY HIMSELF OF SUBSURFACE CONDITIONS PRIOR TO CONSTRUCTION.
- TEMPORARY SURFACING MATERIAL (GRAVEL, ASPHALT, ETC.) MAY HAVE BEEN PLACED WITHIN THE RIGHT-OF-WAY FOR ROAD REPAIRS AND TEMPORARY ACCESS. CONTRACTOR SHALL BE RESPONSIBLE FOR RESTORING EXISTING CONDITIONS TO EXISTING CONDITION. SUCH SURFACING, CONTRACTOR SHALL REMOVE THIS TEMPORARY SURFACING IN THE SAME MANNER AS NOTED ABOVE FOR ROAD. THIS REMOVAL SHALL BE SUBJECT TO THE ENGINEER'S APPROVAL.
- CONSTRUCTION SHALL PROVIDE A MINIMUM FORTY-EIGHT (48) HOUR ADVANCE NOTICE TO THE CITY ENGINEER AND POLICE PRIOR TO BEGINNING ANY EXCAVATION. TO BEARER OF THE CALL SYSTEM, A UTILITY LOCATION SERVICE, (800) 451-7273, SHALL BE REQUESTED. THE FOLLOWING UTILITY COMPANIES TO LOCATE ALL EXISTING LINES WITHIN THE PROJECT AREA: UTILITIES SERVICE, K.C.B.E., SOUTHWESTERN BELL TELEPHONE, MULTIMEDIA ANALYSIS, CITY OF WICHITA POWER MAINTENANCE AND CITY OF WICHITA WATER DEPARTMENT.
- THE CONTRACTOR SHALL BE RESPONSIBLE FOR PRESERVING PROPERTY LINES. THE CONTRACTOR WILL BE REQUIRED TO BE ESTABLISH ANY PROPERTY LINES WHICH ARE DAMAGED OR DISTURBED BY HIS CONSTRUCTION OR OPERATIONS. SUCH LINES SHALL BE ESTABLISHED BY A LICENSED LAND SURVEYOR IN ACCORDANCE WITH STATE LAWS.
- THE WATER DEPARTMENT SHALL FIELD LOCATE WATER VALVES OVER THE DURING CONSTRUCTION WITHIN THE CONSTRUCTION. IT SHALL BE THE CONTRACTOR'S RESPONSIBILITY TO PRESERVE SUCH FIELD LOCATIONS DURING THE CONSTRUCTION PROCESS. WATER VALVES, WATER VALVE BOXES OR FIRE HYDRANTS DAMAGED DURING CONSTRUCTION SHALL BE REPAIRED BY THE CONTRACTOR AT HIS OWN EXPENSE.
- THE CONTRACTOR SHALL REUSE WATER VALVE BOXES AS DIRECTED BY THE ENGINEER. THIS WORK TO BE SUBSIDIARY TO OTHER BID ITEMS.
- INLET MUCKUPS SHALL BE \$10 PER EACH REGARDLESS OF INLET SIZE.
- THIS PROJECT DOES NOT INCLUDE ANY PROVISIONS FOR CONSTRUCTION OF DRIVEWAYS.
- TOPS OF ALL EXISTING INLETS SHALL BE SET IN PLACE AS SHOWN ON THE SPS. INLET DETAIL SHEET AND AT THE PROPER ELEVATION TO MATCH THE ADJACENT TOP OF CURB. NO PAYMENT FOR THIS WORK SHALL BE MADE AS AT THE BID PRICE. BID FOR INLET ADJUSTMENT, REGARDLESS OF INLET SIZE OR AMOUNT OF ADJUSTMENT REQUIRED.
- EXCESS EXCAVATION SHALL BE DISPOSED OF ON SITE AS APPROVED BY THE DEVELOPER CONTACT P.E.C. AT 261-2611 ON SLANSON DEVELOPMENT CORP. AT 261-2611.
- INSPECTION ON THIS PROJECT TO BE BY CITY OF WICHITA.
- CONTRACTOR SHALL POST ALL SIGNS AS REQUIRED BY THE CITY OF WICHITA.

ALL REINFORCED CONCRETE CONSTRUCTION

M-1-22

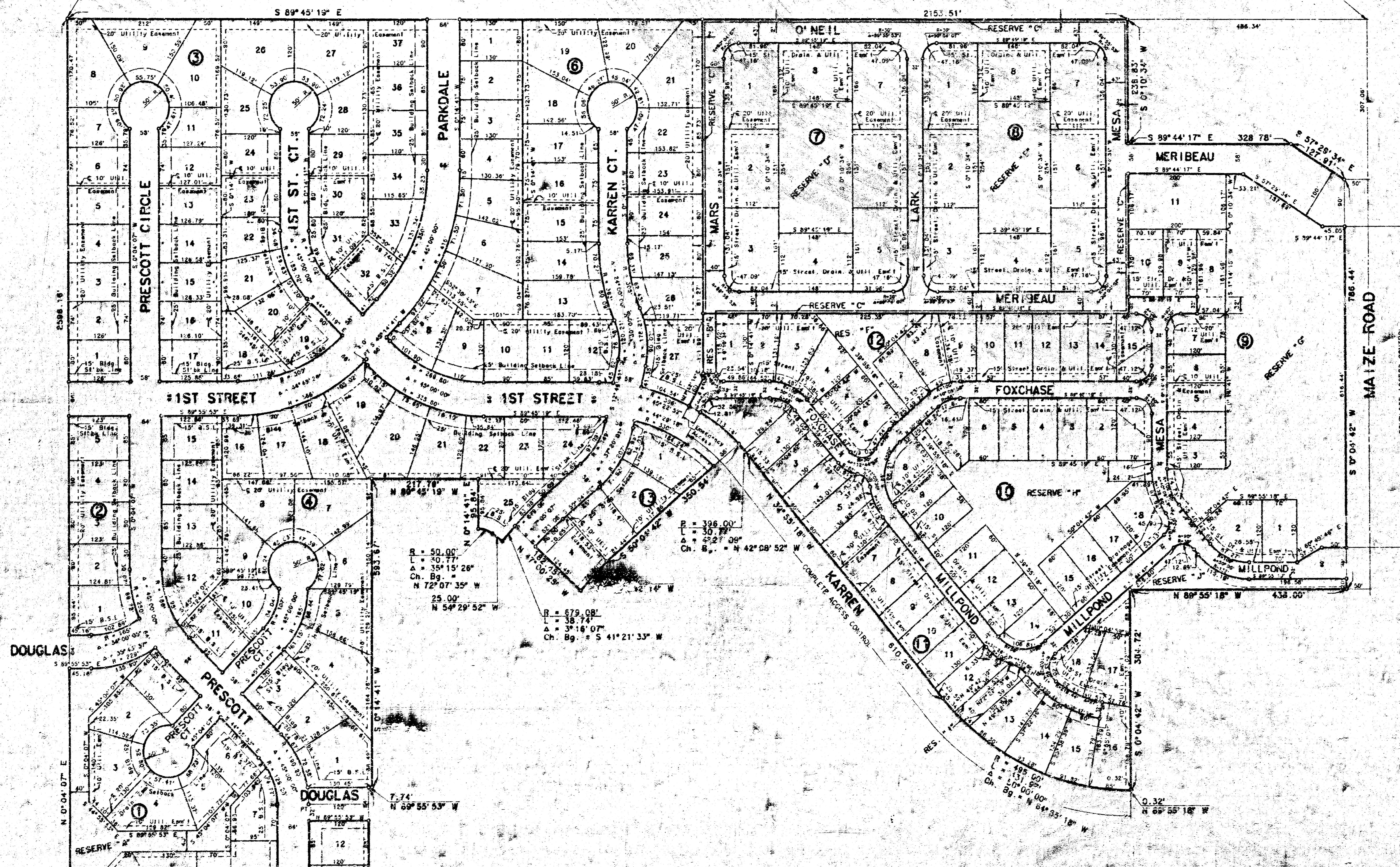
M-1-22

OAK CLIFF ESTATES 3RD ADDITION

TO WICHITA, SEDGWICK COUNTY, KANSAS

SW Cor. SE 1/4, Sec. 19,
T27S, R1W of the 6th P.M.

NE Cor. SE 1/4, Sec. 19,
T27S, R1W of the 6th P.M.



Scale 1" = 100'
August 15, 1984

R = 50.00'
L = 40.77'
Δ = 35° 15' 26"
Ch. Bg. = N 72° 07' 35" W
25.00'
N 54° 29' 52" W

R = 679.08'
L = 38.74'
Δ = 3° 16' 07"
Ch. Bg. = S 41° 21' 33" W

M-1-22

PROJECT NO.	SHEET NO.	TOTAL SHEETS
472-76-245-82893-000-000-001	3	3

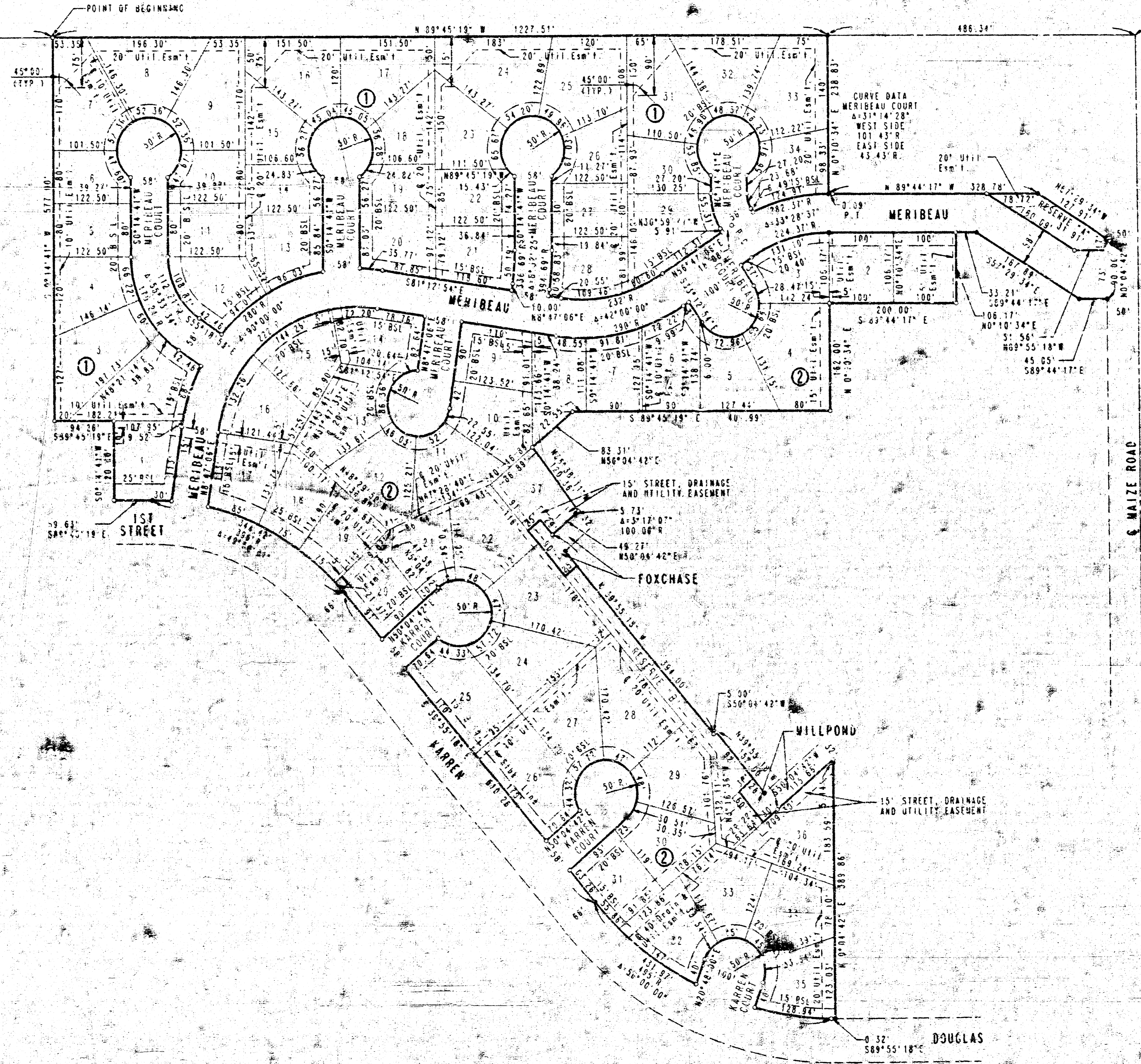
OAK CLIFF ESTATES 5TH ADDITION TO WICHITA, SEDGWICK COUNTY, KANSAS

N.W. CORNER S.E. 1/4
SEC. 19, T27S, R1W
OF THE 6TH P.M.

N.E. CORNER S.E. 1/4
SEC. 19, T27S, R1W
OF THE 6TH P.M.

PLAN	DATE	BY	CHKD.
REVISION			
NO. 1			
NO. 2			
NO. 3			
NO. 4			
NO. 5			
NO. 6			
NO. 7			
NO. 8			
NO. 9			
NO. 10			

SCALE: 1"=100'
 ○ IRON SET
 ● IRON FOUND
 B.S.L. - BUILDING SETBACK LINE
 B.M. - INTERSECTION OF WAYZE ROAD AND MAPLE
 CITY OF WICHITA BENCH MARK DISC 43.5 FT.
 SOUTH AND 52.7 FT. EAST OF INTERSECTION
 CENTERLINE OF B.M.
 ELEV. +133.195 CITY RTUM
 ELEV. +1320.595 M.S.L.
 MINIMUM PAD ELEVATION (LOWEST OPENING) FOR LOTS 1
 AND 2, BLOCK 2 - ELEV. 1324.0 M.S.L.
 FOR ADDITIONAL SETBACKS SEE C.U.P. DP-138 ON FILE
 WITH THE METROPOLITAN AREA PLANNING DEPARTMENT



READING TABLE
 SEE P. 2208 PLAT
 CENTER COORDINATES
 ROTATION ANGLE
 SCALE INSTRUCTIONS

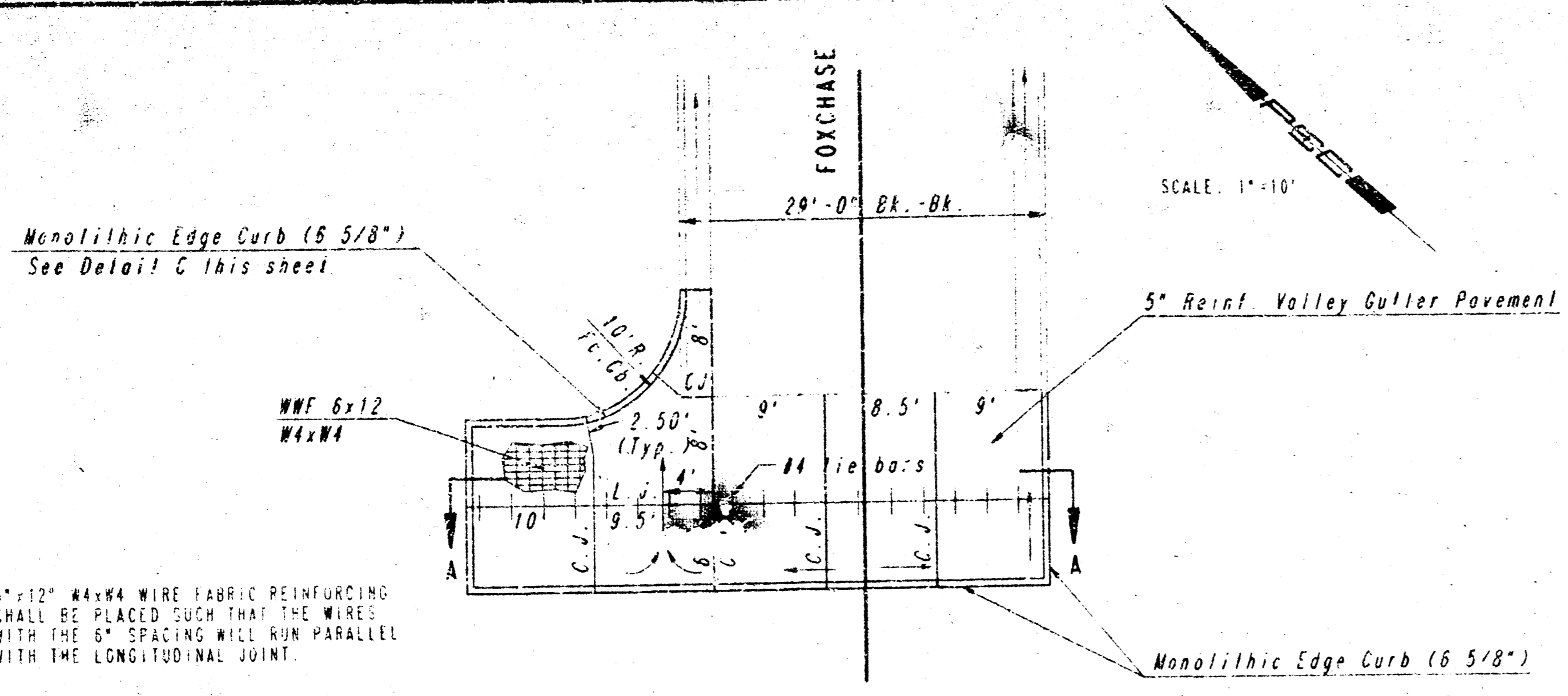
OAK CLIFF ESTATES 5TH ADDITION
PHASE 4

PLAT

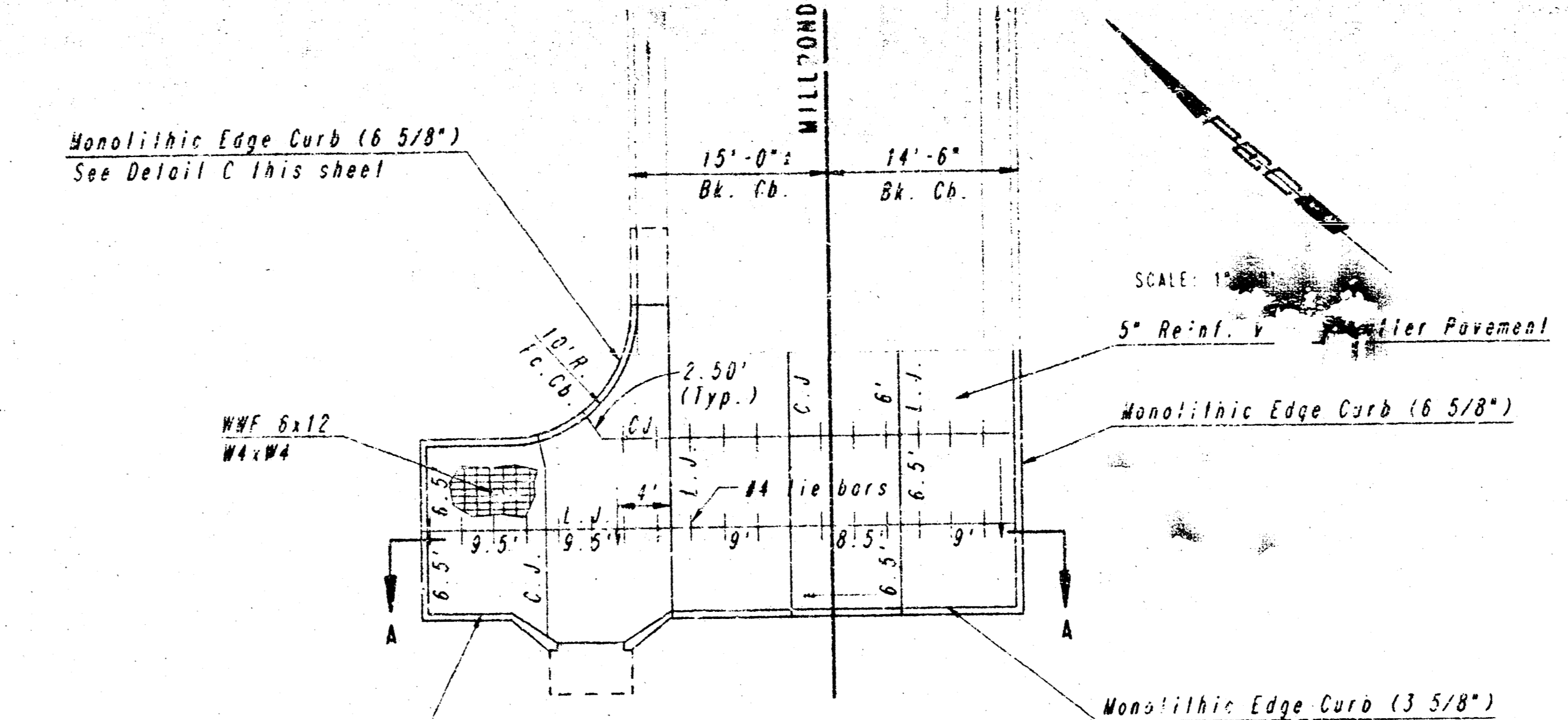
PROFESSIONAL ENGINEERING CONSULTANTS, P.A.
ENGINEERS
WICHITA, KANSAS

Designed by	Checked by
Drawn by	Date
BEP	JULY, 1992
	Job no. 92333

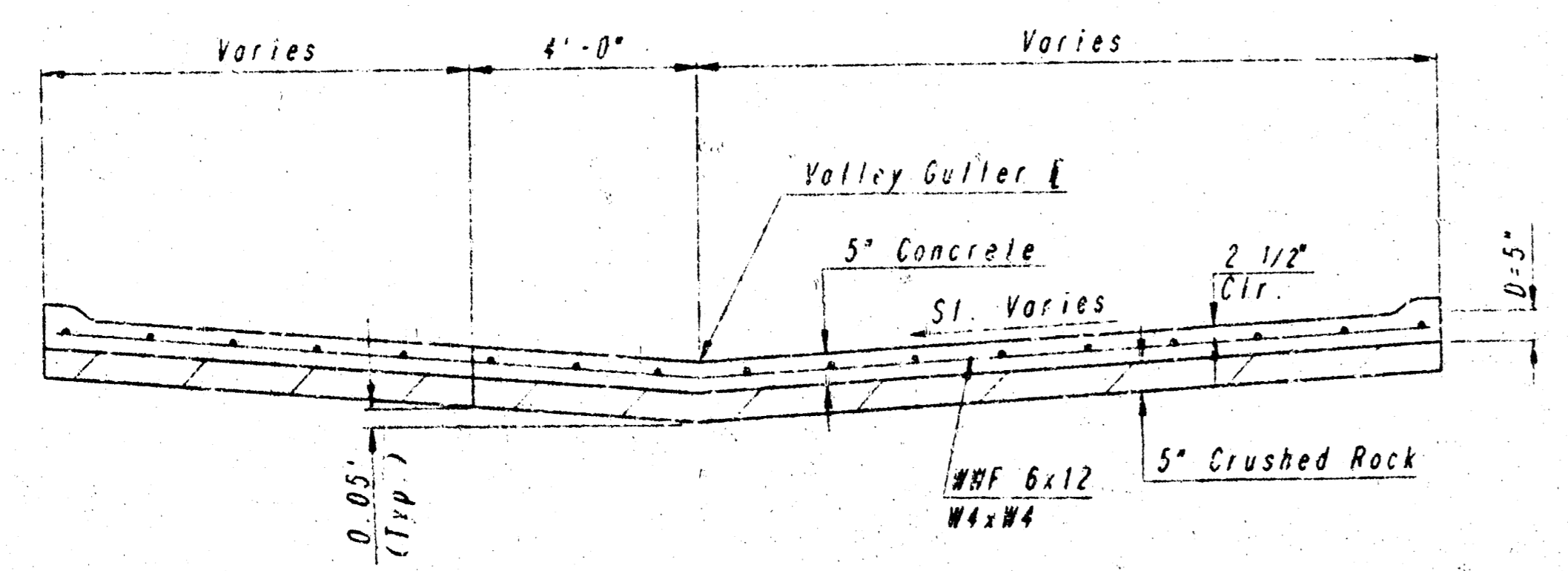
PROJECT NO.	SHEET NO.	TOTAL SHEETS
412-76-245-82093-000-000-007	6R	9



PLAN
REINFORCED VALLEY GUTTER

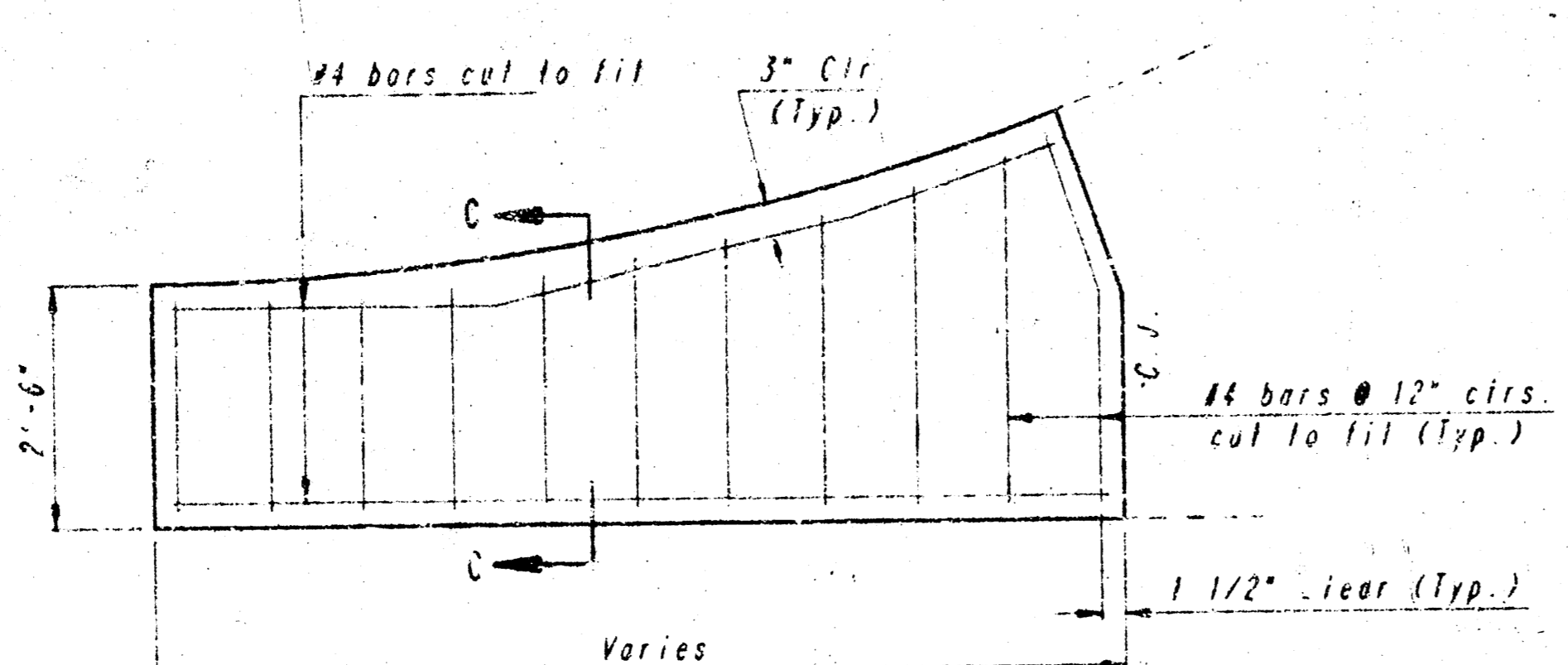


PLAN
REINFORCED VALLEY GUTTER

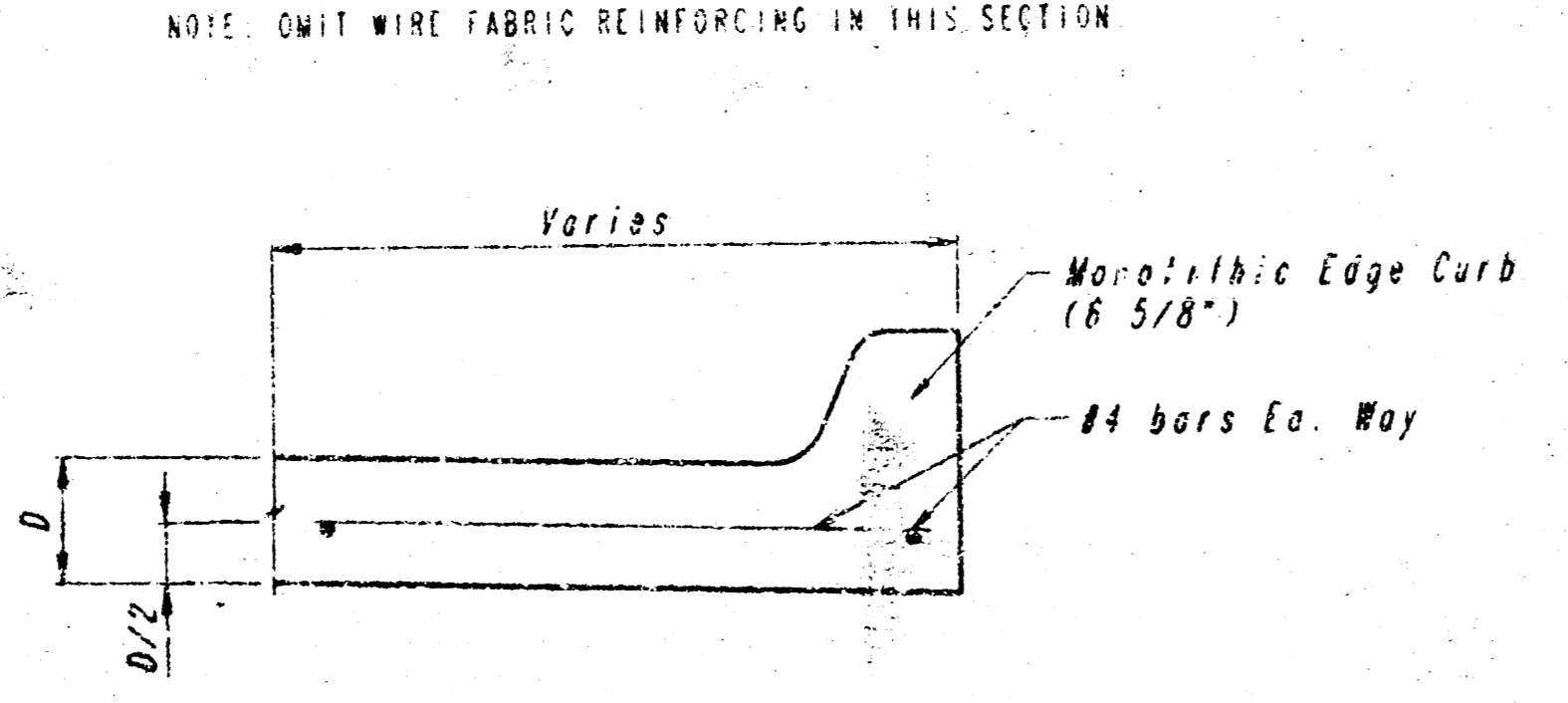


SECTION A-A

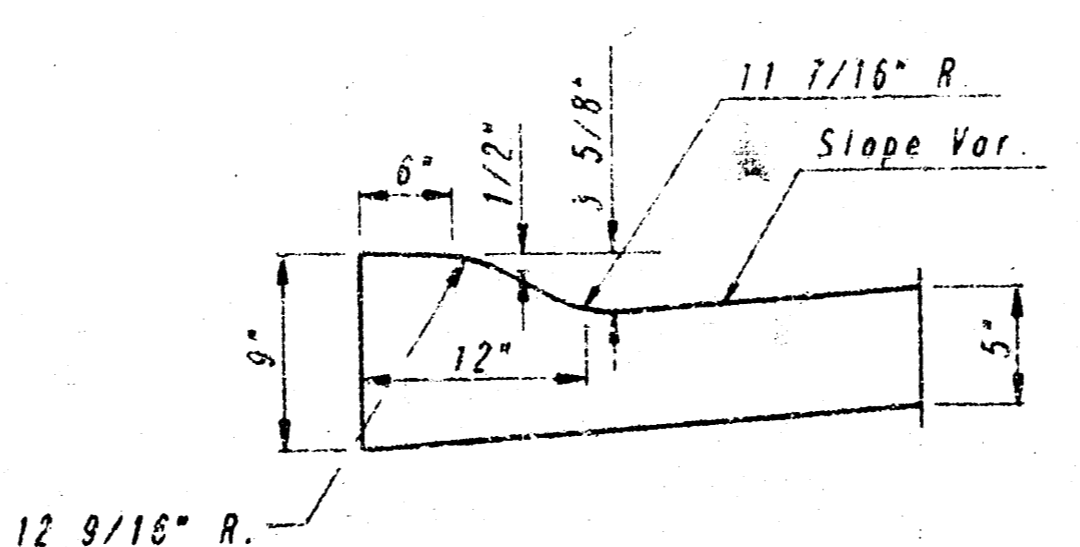
NOTE: OMIT REINFORCING MESH AT ALL JOINTS.
NOTE: ALL CONCRETE VALLEY GUTTER REINFORCEMENT SHALL BE ADEQUATELY SUPPORTED BY BAR CHAIRS IN THE REQUIRED POSITION UNLESS APPROVED OTHERWISE BY THE ENGINEER.



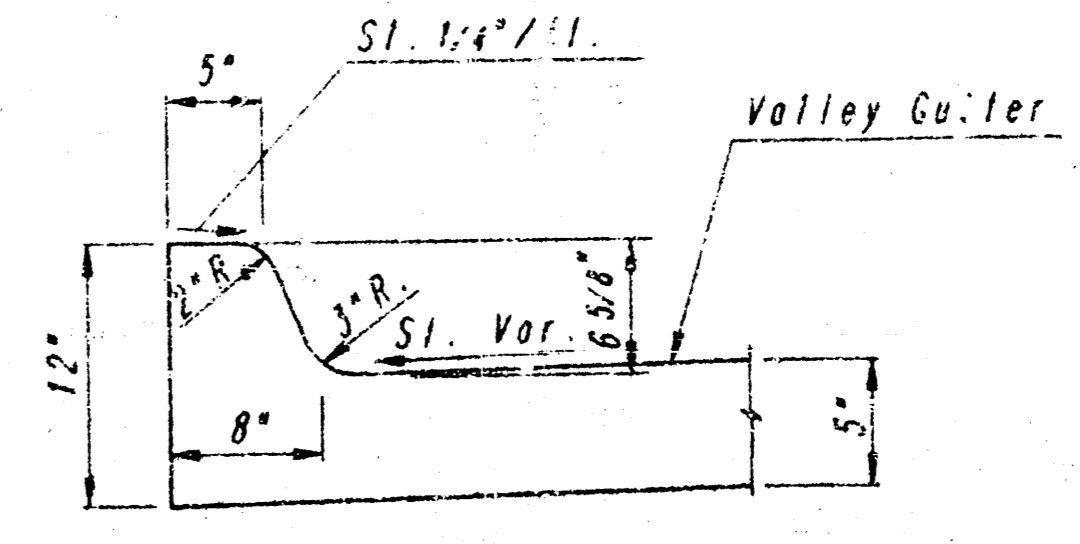
WING REINFORCING DETAIL



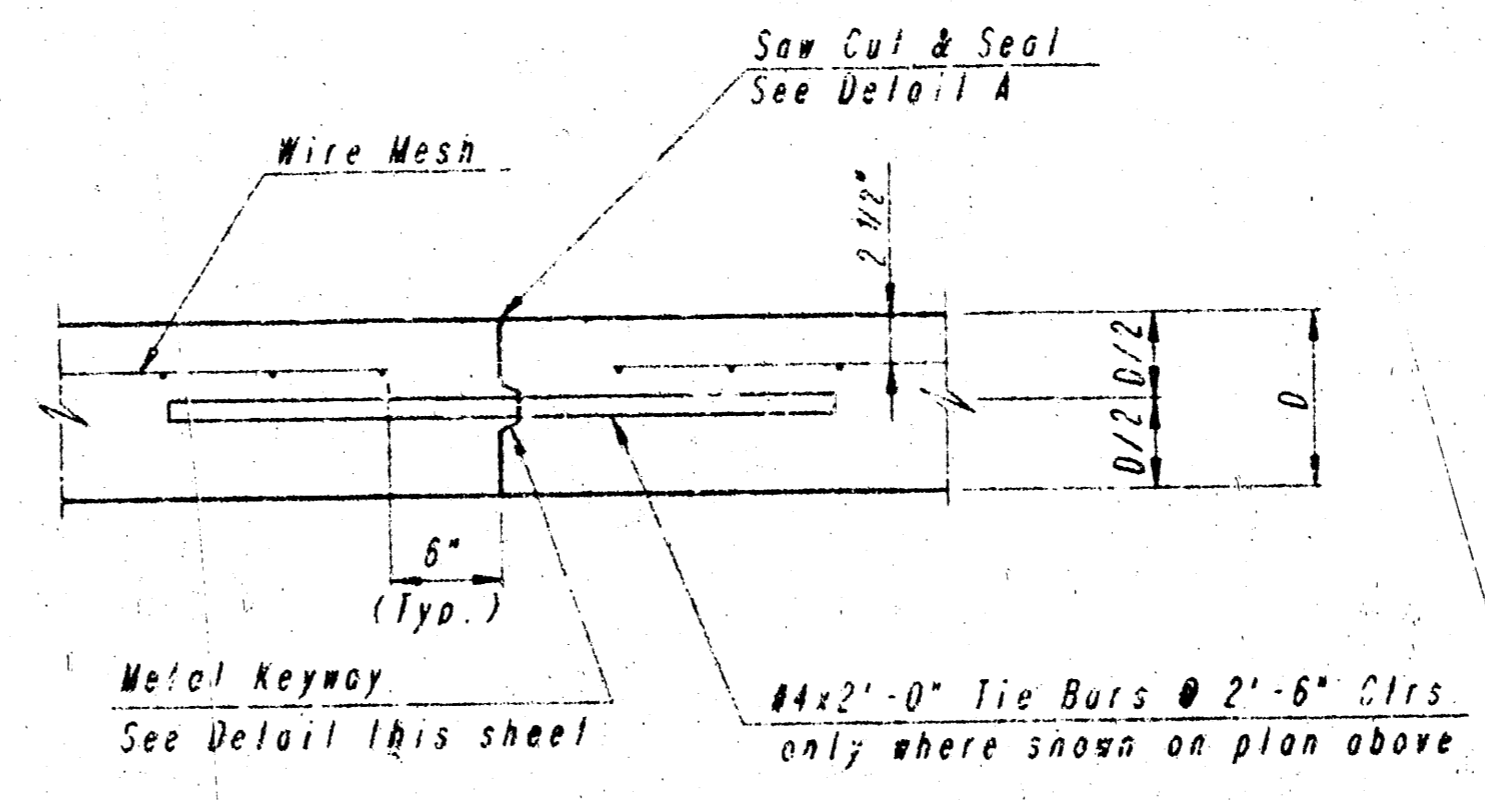
SECTION C-C



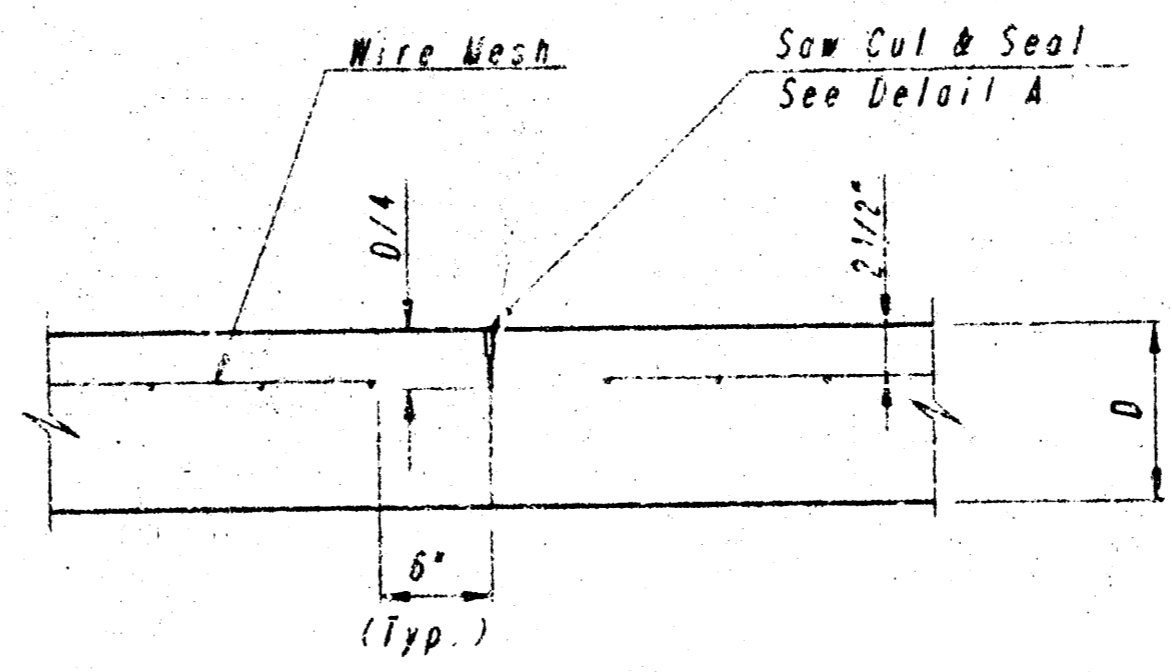
DETAIL B
(ROLL-TYPE CURB)



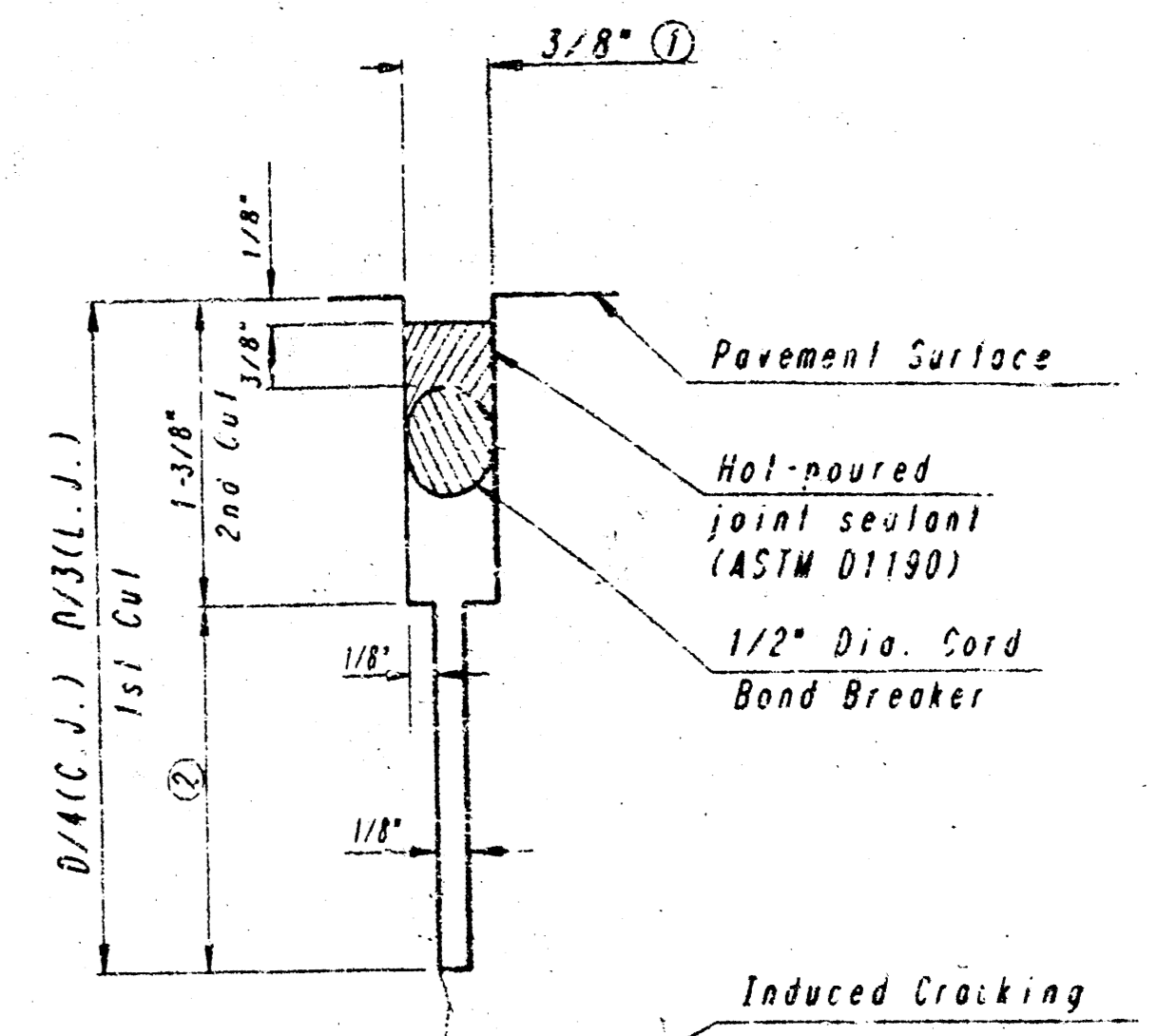
DETAIL C



LONGITUDINAL CONSTRUCTION JOINT DETAIL
REINFORCED PAVEMENT
(TRANSVERSE SECTION)
(ALTERNATE L.J.)

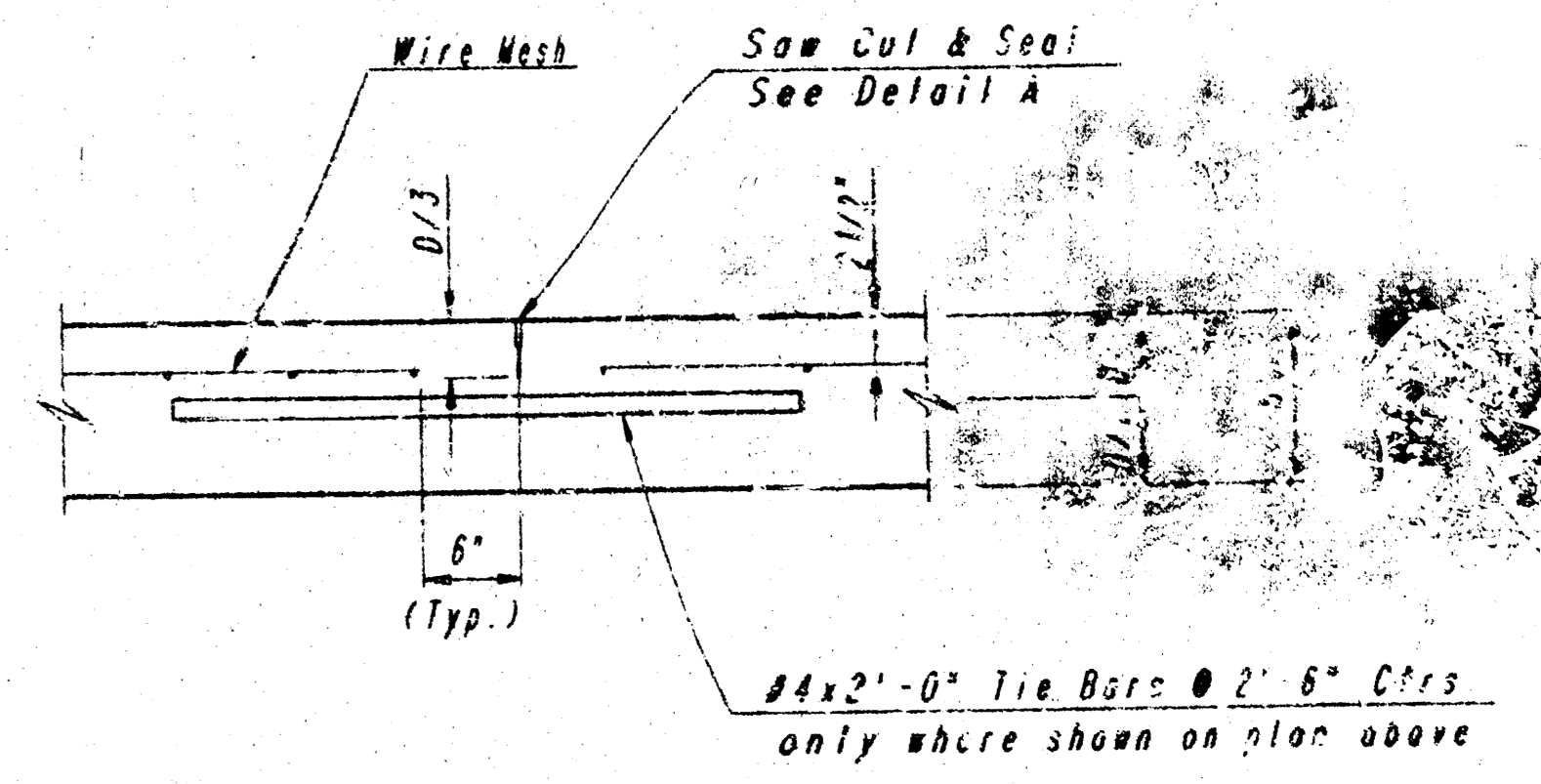


CONTRACTION JOINT DETAIL
REINFORCED PAVEMENT
(C.J.)

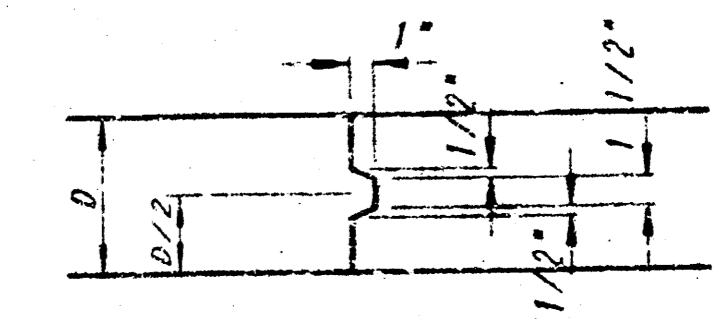


DETAIL A

- ① To be accomplished in 2 cuts for longitudinal joints & contraction joints. Initial cut to be 1/8" wide.
- ② Eliminate bottom of cut when metal keyway is used as part of longitudinal or transverse construction joint and at dovetailed construction joint locations.



LONGITUDINAL JOINT DETAIL
REINFORCED PAVEMENT
(TRANSVERSE SECTION)
(L.J.)



KEYWAY DETAIL

DATE	BY	CHKD.
PLAN	REVISED	
DATE	BY	CHKD.

DRAWING NAME: 32-82133 T&I CUT BILLS
CENTER POINT: CENTER POINT
ROTATION: 0
DATE LAST REVISED: 08/11/93
WIKI BEERY

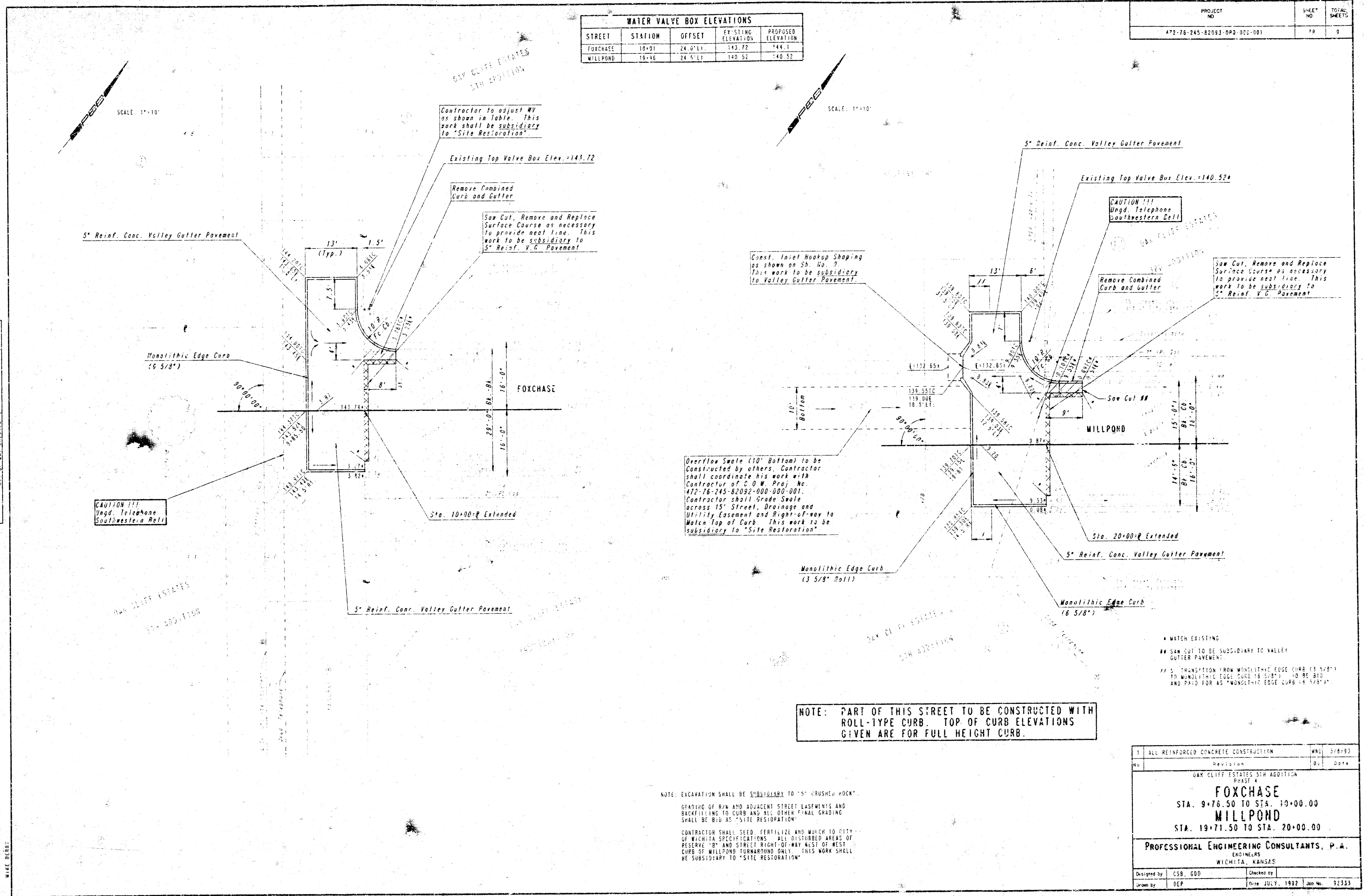
ALL REINFORCED CONCRETE CONSTRUCTION		W&O	3/8/93
No.	Revision	By	Date
OAK CLIFF ESTATES 5TH ADDITION PHASE A			
VALLEY GUTTER DETAILS			
PROFESSIONAL ENGINEERING CONSULTANTS, P.A. ENGINEERS WICHITA, KANSAS			
Designed by	CSH, GDD	Checked by	
Drawn by	DEP	Date	AUG. 1992
Job No.	32333		

PROJECT NO.	SHEET NO.	TOTAL SHEETS
472-76-245-82093-003-002-001	12	9

WATER VALVE BOX ELEVATIONS				
STREET	STATION	OFFSET	EXISTING ELEVATION	PROPOSED ELEVATION
FOXCHASE	10+01	24 0" L.	143.72	144.1
MILLPOND	19+96	24 5" L.	140.52	140.52

PLAN	SUBMITTED	BY
NOTE BOOK	ALIGNED	CHECKED
NO.	BY	DATE

DRAWING NAME: 37-92333 PAVING PLAN
 LOCATION: 04 1224
 CENTER POINT DATES:
 DATE LAST REVISION: 01/10/92
 MAKE CHECK



Overflow Swale (10" Bottom) to be constructed by others. Contractor shall coordinate his work with Contractor of C.O.W. Proj. No. 472-76-245-82092-000-001. Contractor shall grade Swale across 15' Street, Drainage and Utility Easement and Right-of-way to Match Top of Curb. This work to be subsidiary to "Site Restoration"

NOTE: PART OF THIS STREET TO BE CONSTRUCTED WITH ROLL-TYPE CURB. TOP OF CURB ELEVATIONS GIVEN ARE FOR FULL HEIGHT CURB.

NOTE: EXCAVATION SHALL BE SUBSIDIARY TO "5\"/>

- * MATCH EXISTING
- ** SAW CUT TO BE SUBSIDIARY TO VALLEY GUTTER PAVEMENT
- ### TRANSITION FROM MONOLITHIC EDGE CURB (6 5/8") TO MONOLITHIC EDGE CURB (6 5/8") TO BE BID AND PAID FOR AS "MONOLITHIC EDGE CURB (6 5/8")"

1	ALL REINFORCED CONCRETE CONSTRUCTION	DATE	3/8/93
No.	Revision	By	Date
OAK CLIFF ESTATES 5TH ADDITION FOXCHASE STA. 9+76.50 TO STA. 10+00.00 MILLPOND STA. 19+71.50 TO STA. 20+00.00			
PROFESSIONAL ENGINEERING CONSULTANTS, P.A. ENGINEERS WICHITA, KANSAS			
Designed by	CSB, GDD	Checked by	
Drawn by	DEP	Date	JULY, 1992
		Job No.	92333

PROJECT NO.	SHEET NO.	TOTAL SHEETS
477-76-245-82093-000-000-301	18	9

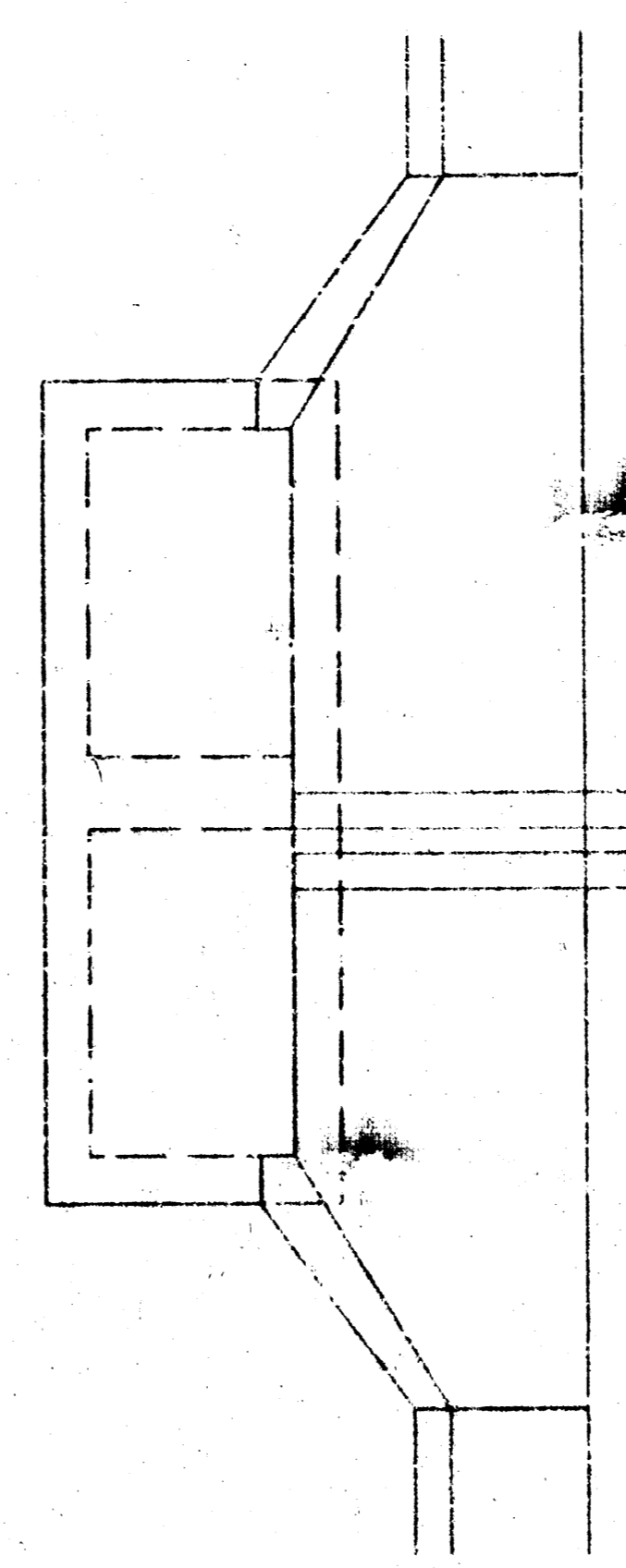
CRUSHED ROCK GRADATION REQUIREMENTS

PERCENT OF AGGREGATE RETAINED	
0.075"	0
0.150"	20-60
0.300"	50-100
0.600"	90-98
1.180"	95-98

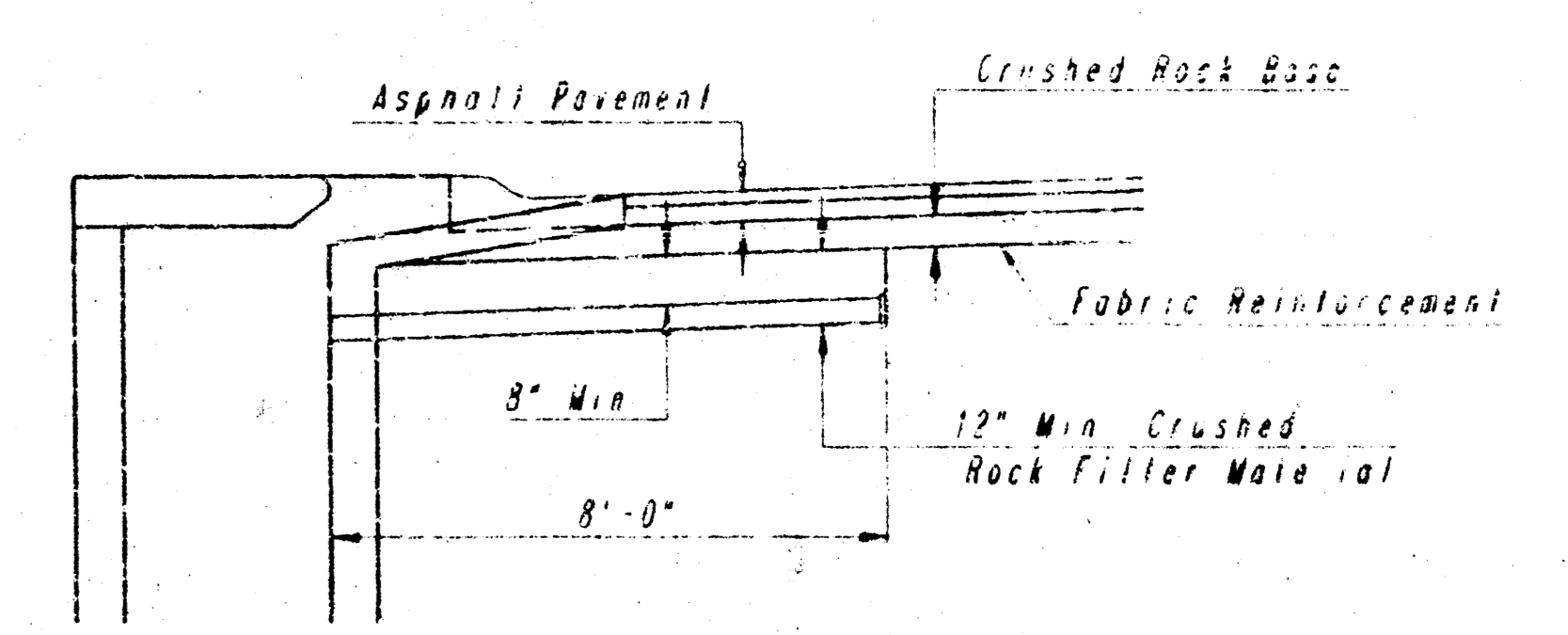
PAVEMENT UNDERDRAIN LOCATIONS

STREET	STATION	SIDE
WILLIAMS	19+53.31	E

ROCK QUALITY SHALL CONFORM TO THE REQUIREMENTS SPECIFIED BY THE 1990 EDITION STANDARD SPECIFICATION SPECIFICATION 1137 FOR GRAVELITE CLASS 1.



PLAN



PIPE TO HAVE MINIMUM 10 PERFORATIONS PER LIN. FT. @ 1" DIA.
PERFORATIONS TO BE ON BOTTOM HALF

SECTION

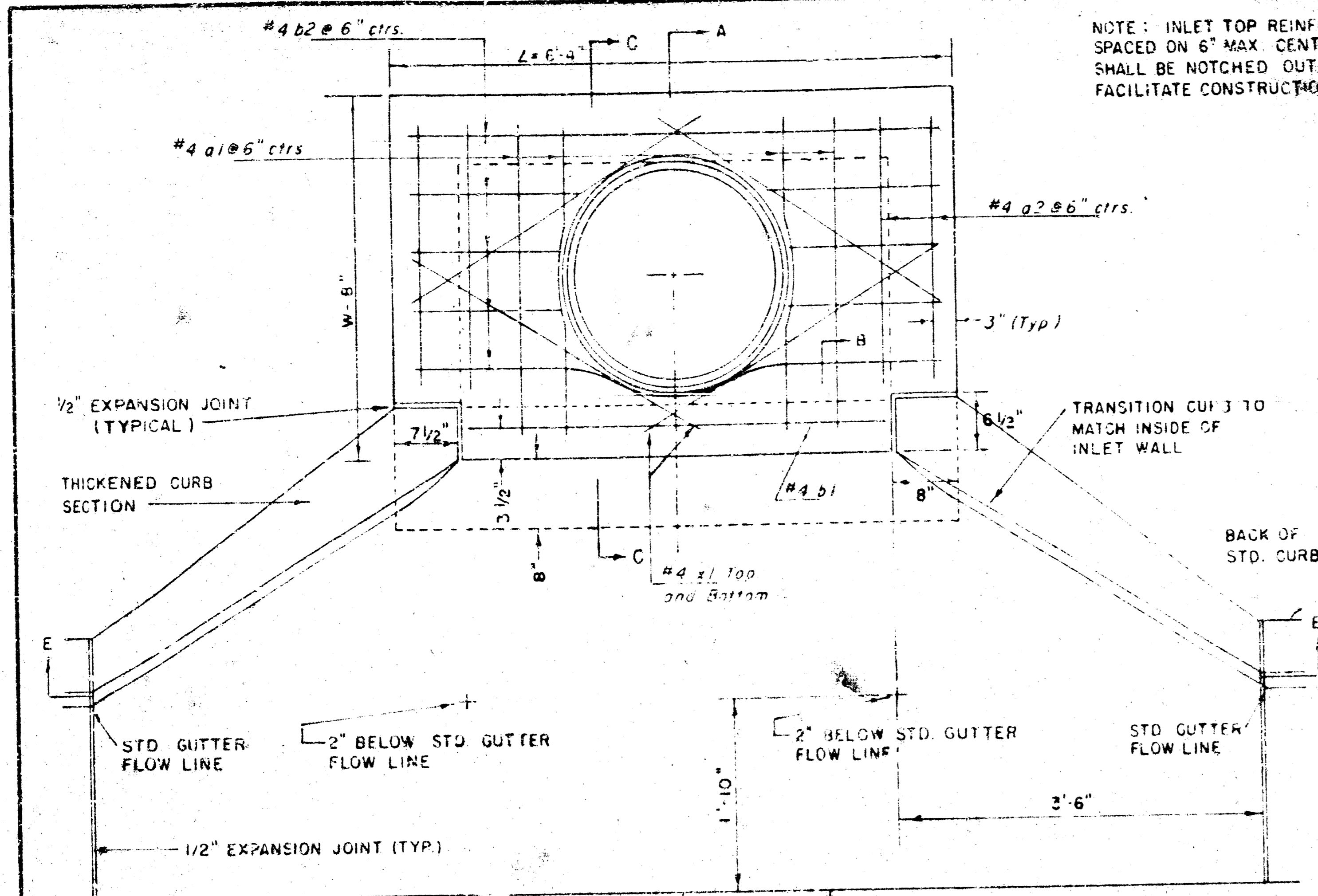
NOTE: PAVEMENT CONTRACTOR SHALL BE REQUIRED TO INSTALL SDR 35, 4" PERFORATED DRAIN PIPE AS INDICATED IN THE DETAILS ABOVE. A PIPE SHALL BE INSTALLED THROUGH WALLS OF CURB INLETS BY OTHERS IN A MANNER ALLOWING CONNECTION OF ADDITIONAL DRAIN PIPE AS REQUIRED BY DETAILS ABOVE.

PAVEMENT UNDERDRAIN DETAIL
MATERIALS FOR AND CONSTRUCTION OF THE PAVEMENT UNDERDRAINS SHALL BE SUBJECT TO OTHER BID ITEMS

PLAN	DATE	BY
NO. 1	11/11/92	ADG
NO. 2		
NO. 3		
NO. 4		
NO. 5		
NO. 6		
NO. 7		
NO. 8		
NO. 9		
NO. 10		

DRAWING NAME: 32" DUCTILE IRON PIPE
LOCATION: 04 4716
CLIENT: COMMERCE CITY
DATE: 11/11/92
NAME: BERRY

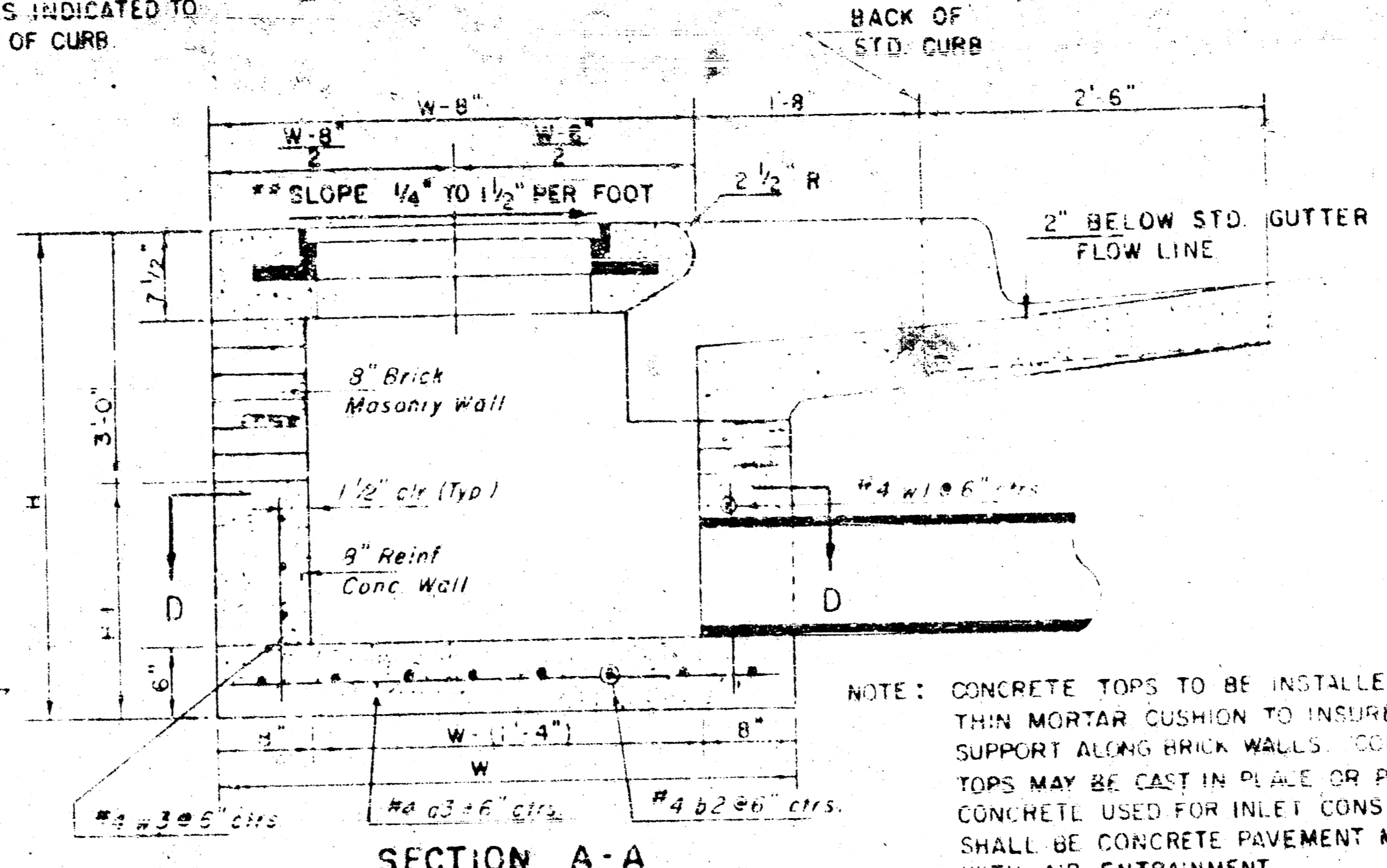
1	ALL REINFORCED CONCRETE CONSTRUCTION	DATE	02/28/92
No.	Revision	By	ADG
GAK CREEK ESTATES 500 AMPLION PHASE 4			
MISCELLANEOUS PAVING DETAILS			
PROFESSIONAL ENGINEERING CONSULTANTS, P.A. ENGINEERS WICHITA, KANSAS			
Designed by	CSB, GDB	Checked by	
Drawn by	DLP	Date	ADG 11/92 Job No. 92133



NOTE: EXPANSION JOINT ONLY IN CURB AREA WITH CONC. PAVEMENT.

PLAN

NOTE: INLET TOP REINFORCING SHALL BE SPACED ON 6" MAX CENTERS. INLET LIDS SHALL BE NOTCHED OUT AS INDICATED TO FACILITATE CONSTRUCTION OF CURB.



SECTION A-A

NOTE: CONTRACTOR SHALL HAVE THE OPTION OF CONSTRUCTING 8" BRICK MASONRY WALLS BETWEEN THE CONCRETE INLET BASE AND TOP ON THIS INLET WHEN W = 6'-4" AND H = 7'-0" OR LESS.

ADDITIONAL CURB AND GUTTER CONSTRUCTION NECESSARY TO CONNECT SET-BACK INLET TO PAVEMENT WILL BE PAID FOR AT THE UNIT PRICE BID FOR EACH INLET HOOKUP.

INLET INVERT SHALL BE CHASED WITH A SACK SAND MIX CONCRETE TO CREATE FLOW CHANNELS AND TO INCREASE HYDRAULIC EFFICIENCY SUCH THAT THE INLET WILL BE SELF-CLEANING BETWEEN ALL INLET AND/OR OUTLET PIPES.

THE ENDS OF ALL PIPES INSTALLED IN INLETS SHALL BE CUT OFF FLUSH WITH THE INSIDE FACE OF THE INLET WALL.

NOTE: Slope of Inlet Tops to match Sidewalk or Parking Slopes within Limits Indicated.

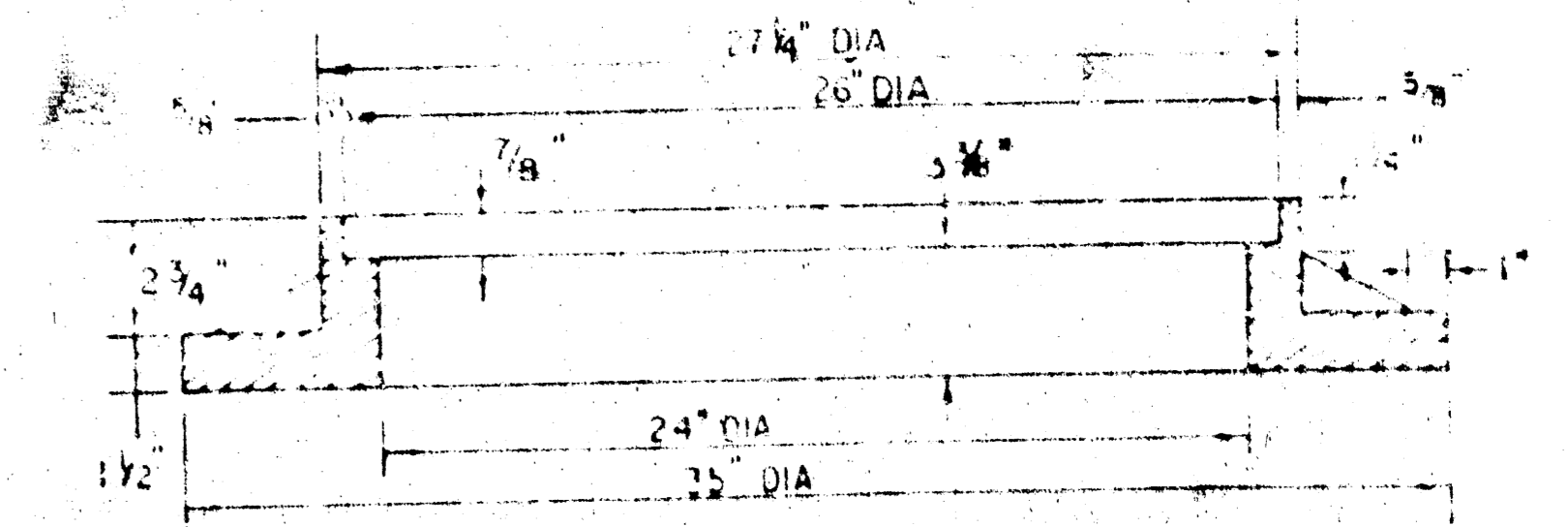
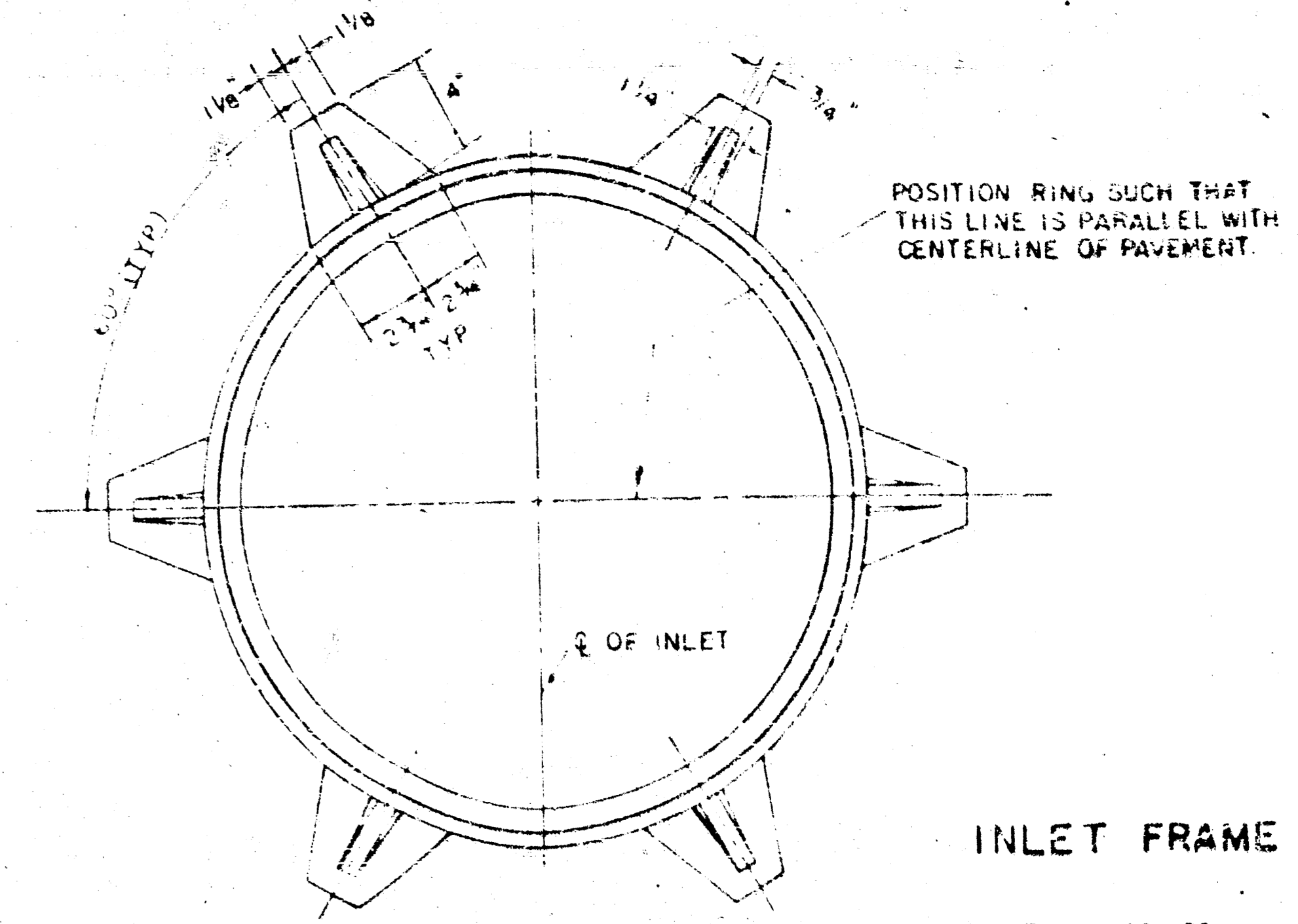
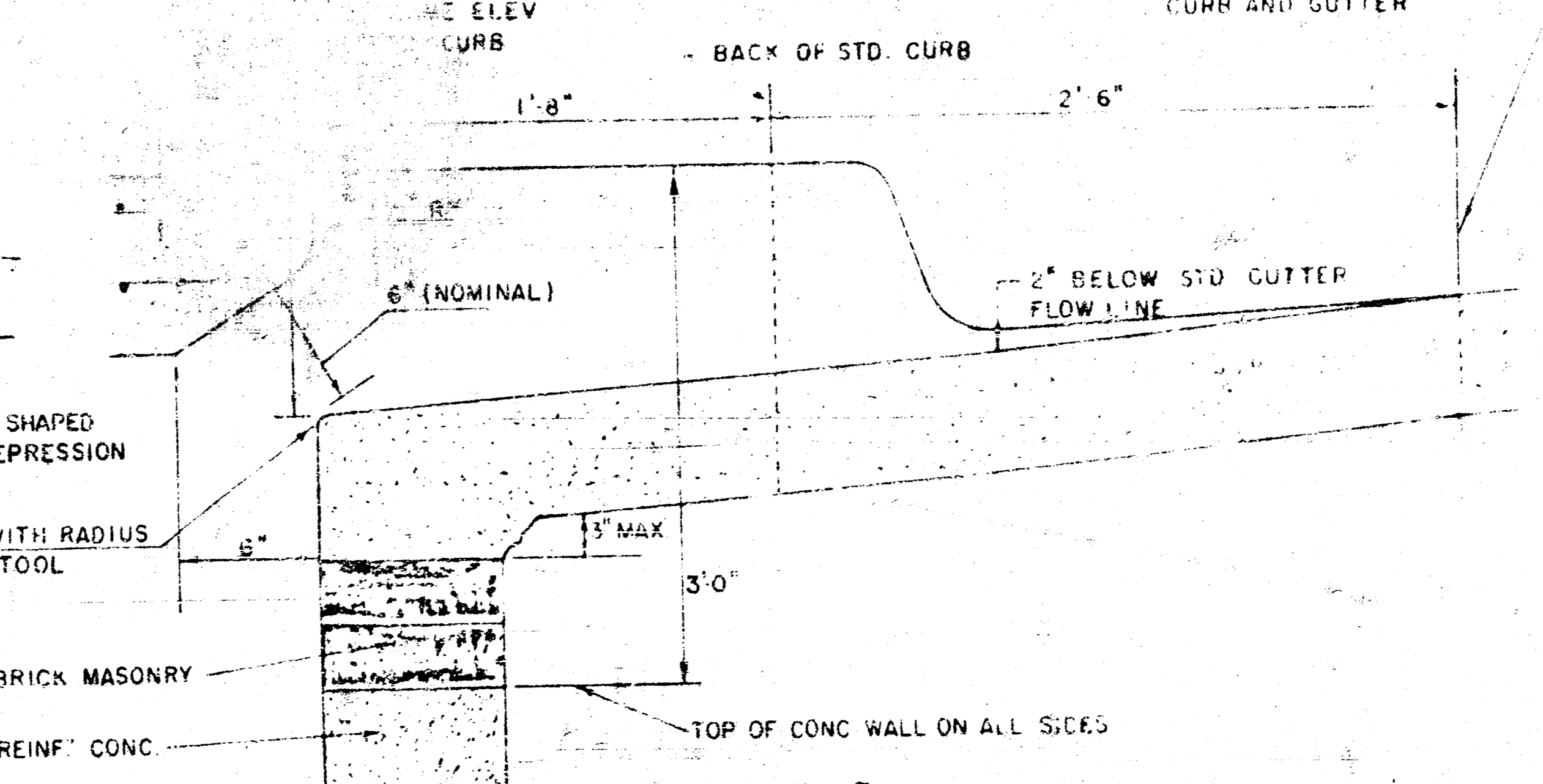
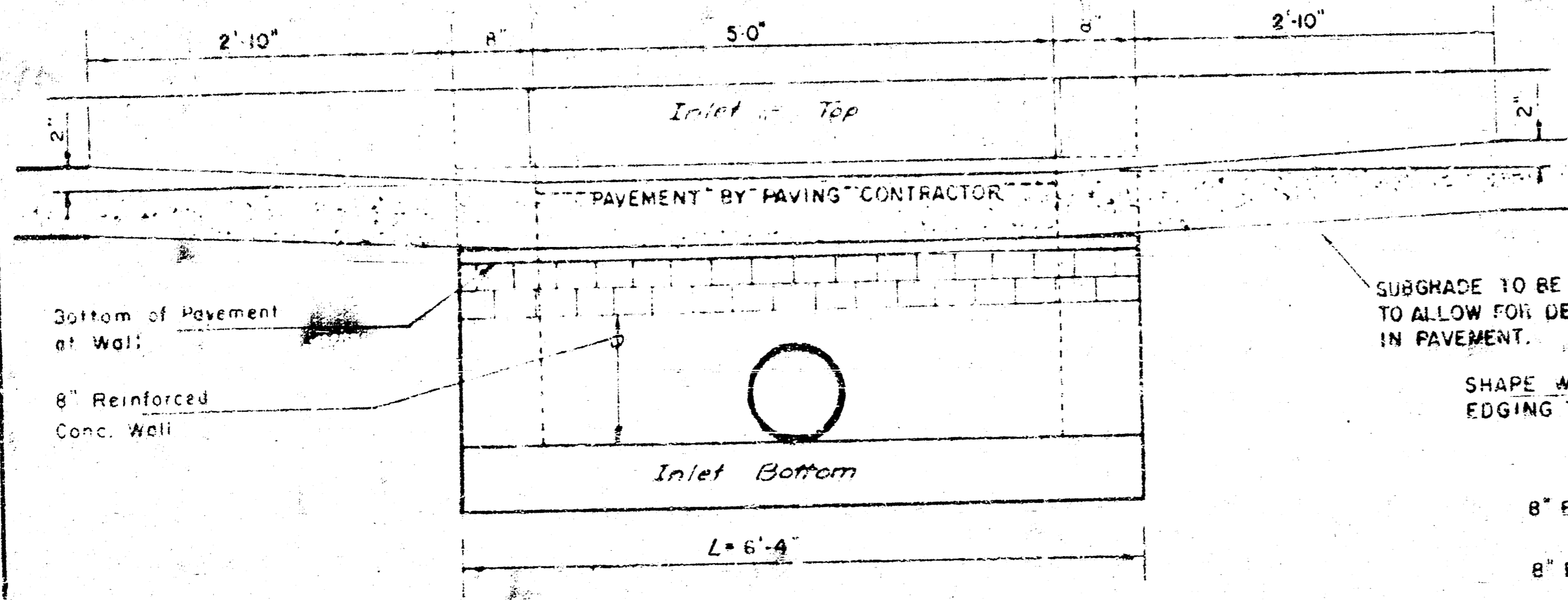
BENDING DIAGRAM

W	PRECAST TOP SIZE	PIPE SIZE	CU YD CONC
4'-4"	38" x 64" x 7 1/2"	21" B SMALLER	0.38 ±
5'-4"	48" x 64" x 7 1/2"	24" B 30"	0.51 ±
6'-4"	58" x 64" x 7 1/2"	36" B 42"	0.64 ±
7'-4"	68" x 64" x 7 1/2"	48" B 54"	0.77 ±
8'-4"	78" x 64" x 7 1/2"	60" B 66"	0.90 ±

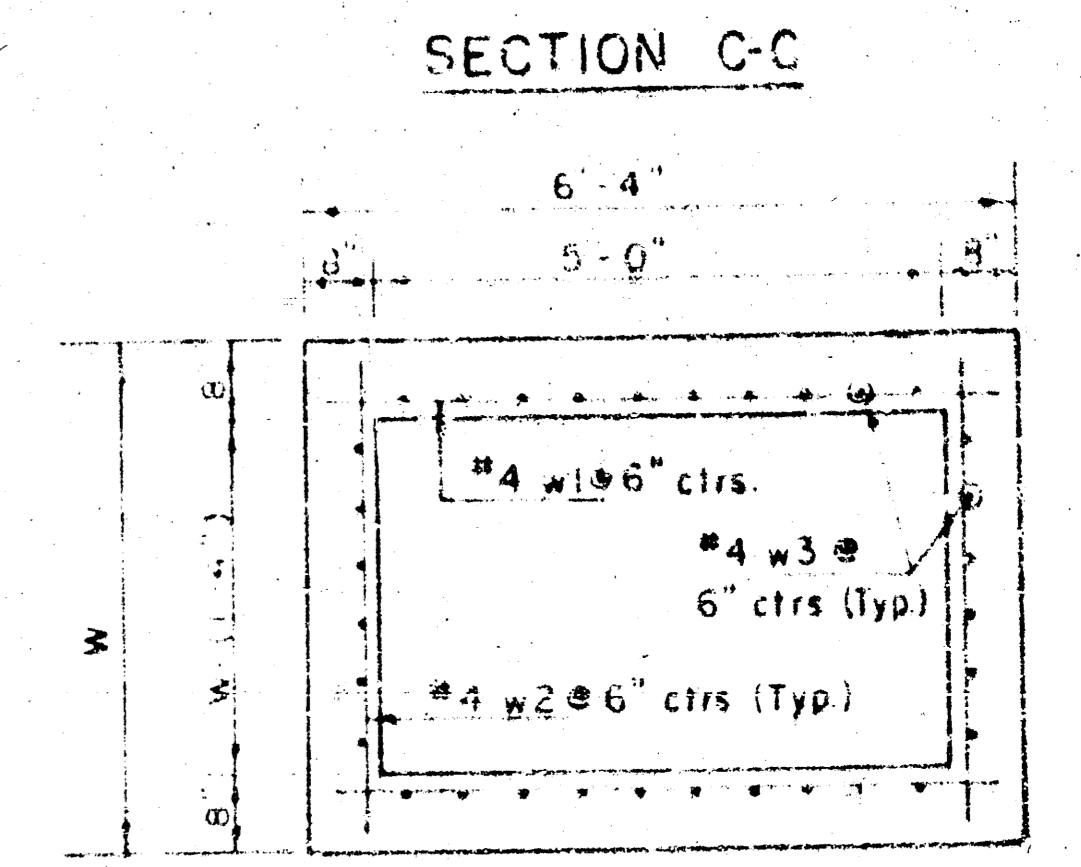
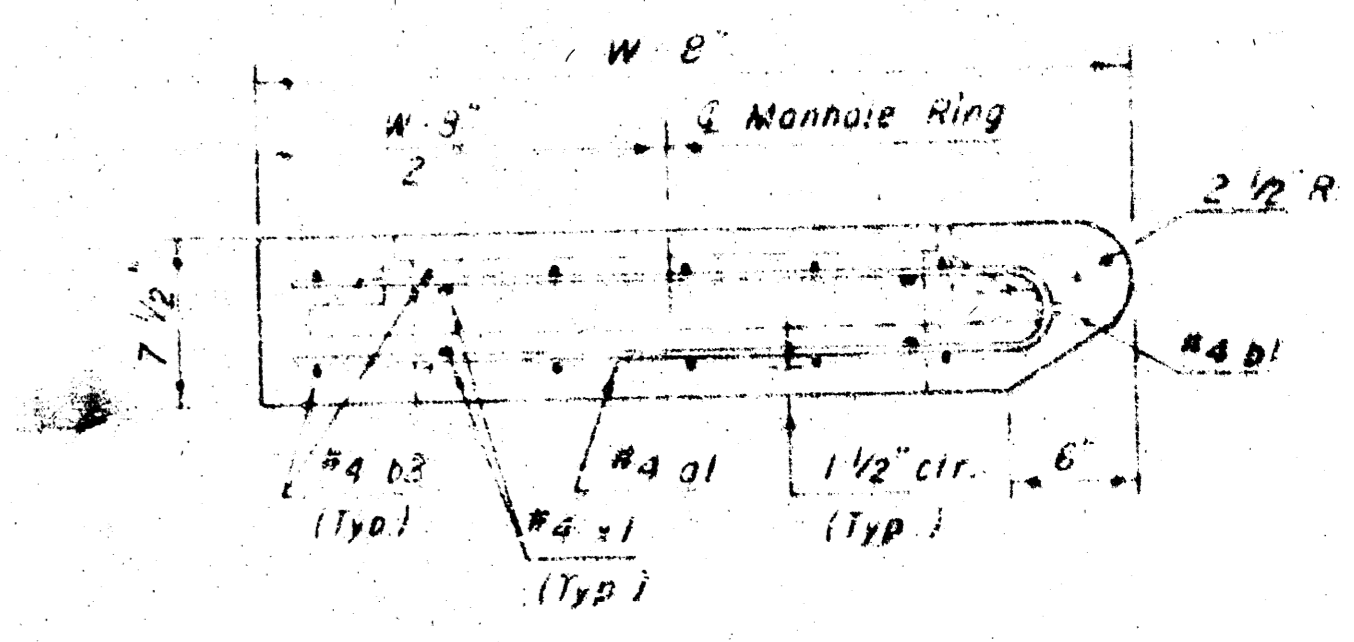
PRECAST SLAB AND FLOOR REINFORCING									
Mark	Size	No	Length	No	Length	No	Length	No	Length
1a1	#4	6	6'-7"	6	8'-7"	6	10'-7"	6	12'-7"
1a2	#4	4	6'-0"	4	8'-0"	4	10'-0"	4	12'-0"
1b1	#4	13	4'-1"	13	5'-1"	13	6'-1"	13	7'-1"
1b2	#4	1	4'-9"	1	4'-9"	1	4'-9"	1	4'-9"
1c1	#4	23	6'-1"	29	6'-1"	35	6'-1"	41	6'-1"
1c2	#4	8	3'-10"	8	4'-2"	8	4'-10"	8	5'-2"

WALL REINFORCING									
Mark	Size	No	Length	No	Length	No	Length	No	Length
W1	#4	1	5'-1"	1	5'-1"	1	5'-1"	1	5'-1"
W2	#4	1	4'-1"	1	5'-1"	1	6'-1"	1	7'-1"
W3	#4	32	3'-6"	36	2'-0"	40	2'-0"	44	2'-0"

1 Field bend or cut Reinforcing as required for clearance.
 ① 4(HI-12"), (HI 12") Round down to nearest 0.5"
 ② HI-3"



SEE CITY OF WICHITA STANDARD MANHOLE FRAME AND COVER DETAIL SHEET FOR COVER DETAILS TO BE USED WITH INLET FRAME.



REVISED 11-30-1988
 REVISED 12-2-1984
 Revised 2-16-1989

DETAIL STANDARD TYPE IA CURB INLET
 CITY OF WICHITA, KANSAS
 INLET OPENING = 6" x 5'0"
 L = 6'-4"

JUNE 1984 14-02-05-01

FOR INLET HOOKUP DETAILS ONLY

Project No. 472-76-285-82093-000-000-001