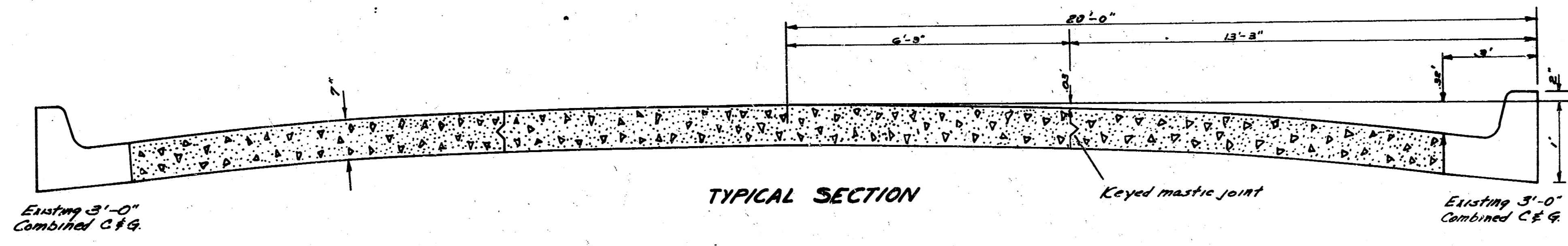
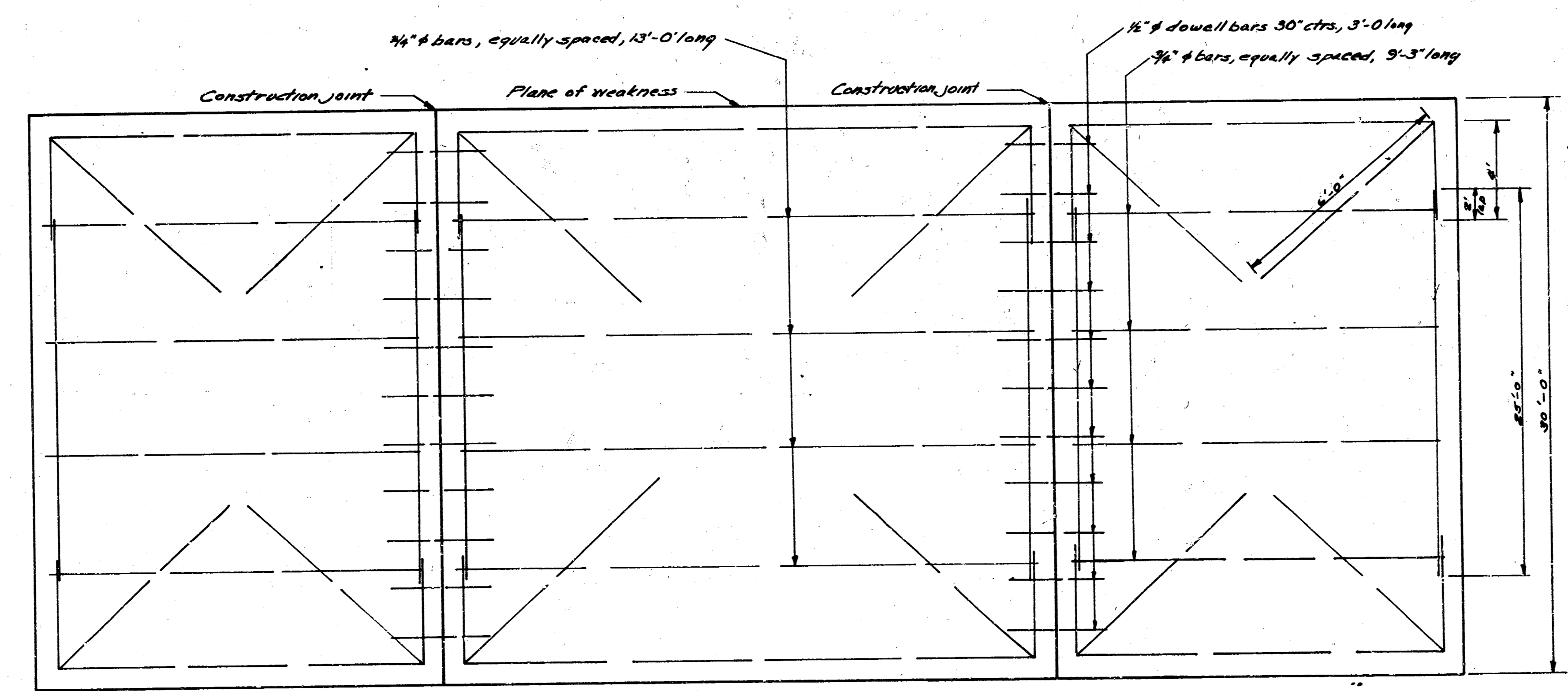


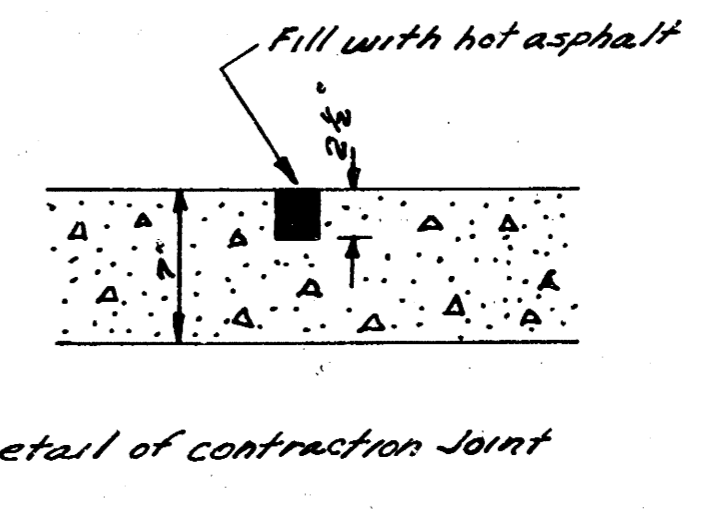
**OLIVER**  
NL CENTAL TO NL MUEDOCK



NOTE Where combined curb & gutter is removed, extend steel pattern and construct standard integral curb.



Use 3/8" # bars, except where otherwise noted



NOTE: 1/2" # bars 30" ctrs, 3'-0" long  
3/8" # bars, equally spaced, 9'-3" long



