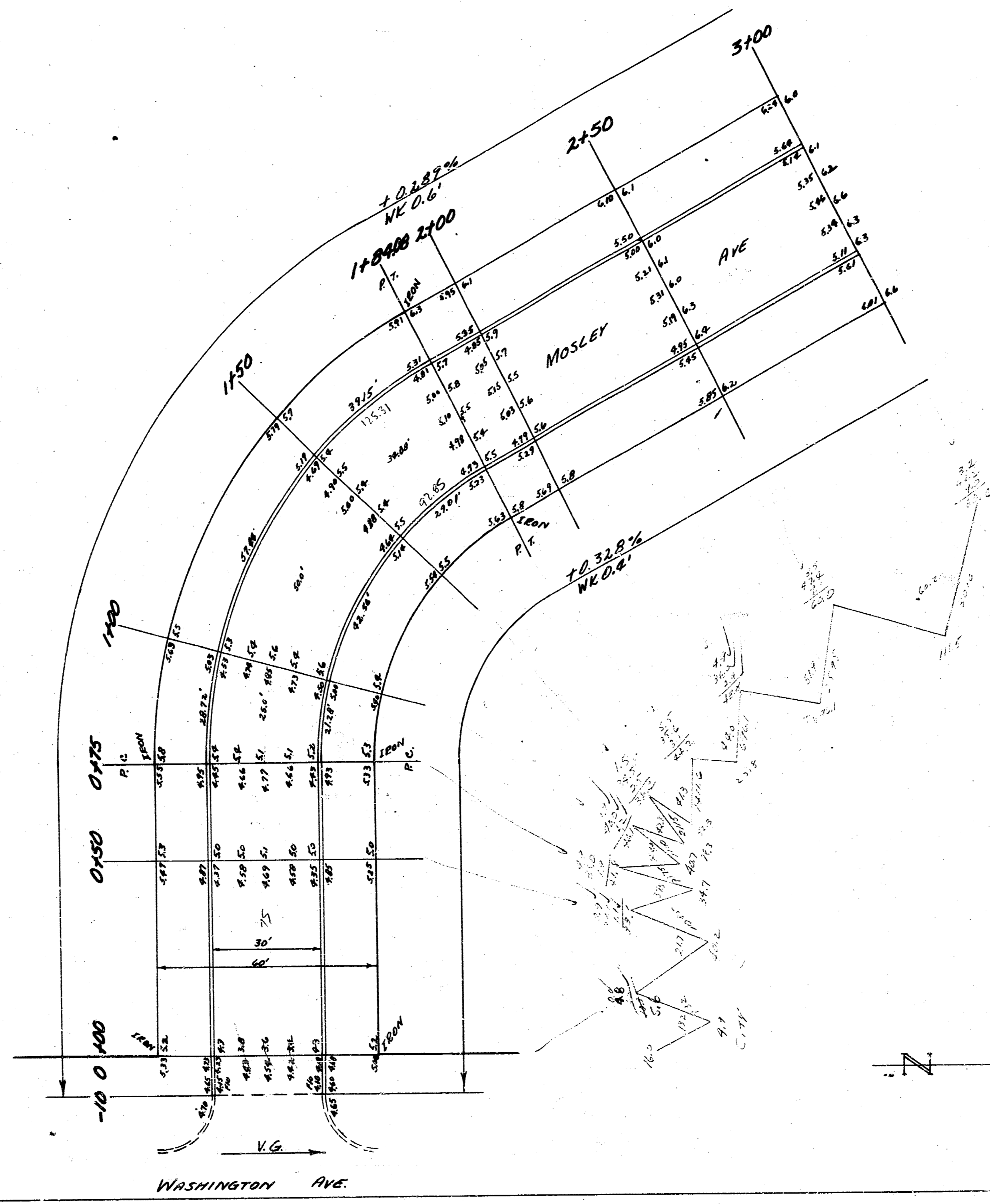


B.M. 9351 "G" IN GLOBE W.C. WASHINGTON N.L. WASSALL

STA ON E

CURVE DATA 6' OFFSET FROM N.C. LINE					
STATION	CHORD BEARING	CURVE BEARING	CHORD DIST.	CHORD BEARING	TOTAL DEPTH
0+00	25.0°	30.13'	19.76'	7° 4' 30"	
1+50	58.0°	58.86'	39.18'	18° 12' 45"	31' 19" 00"
1+96.00	33.00°	40.97'	26.86'	7° 51' 0"	31' 00" 00"



2005
207
2272

2004
207
2077.4

1/3

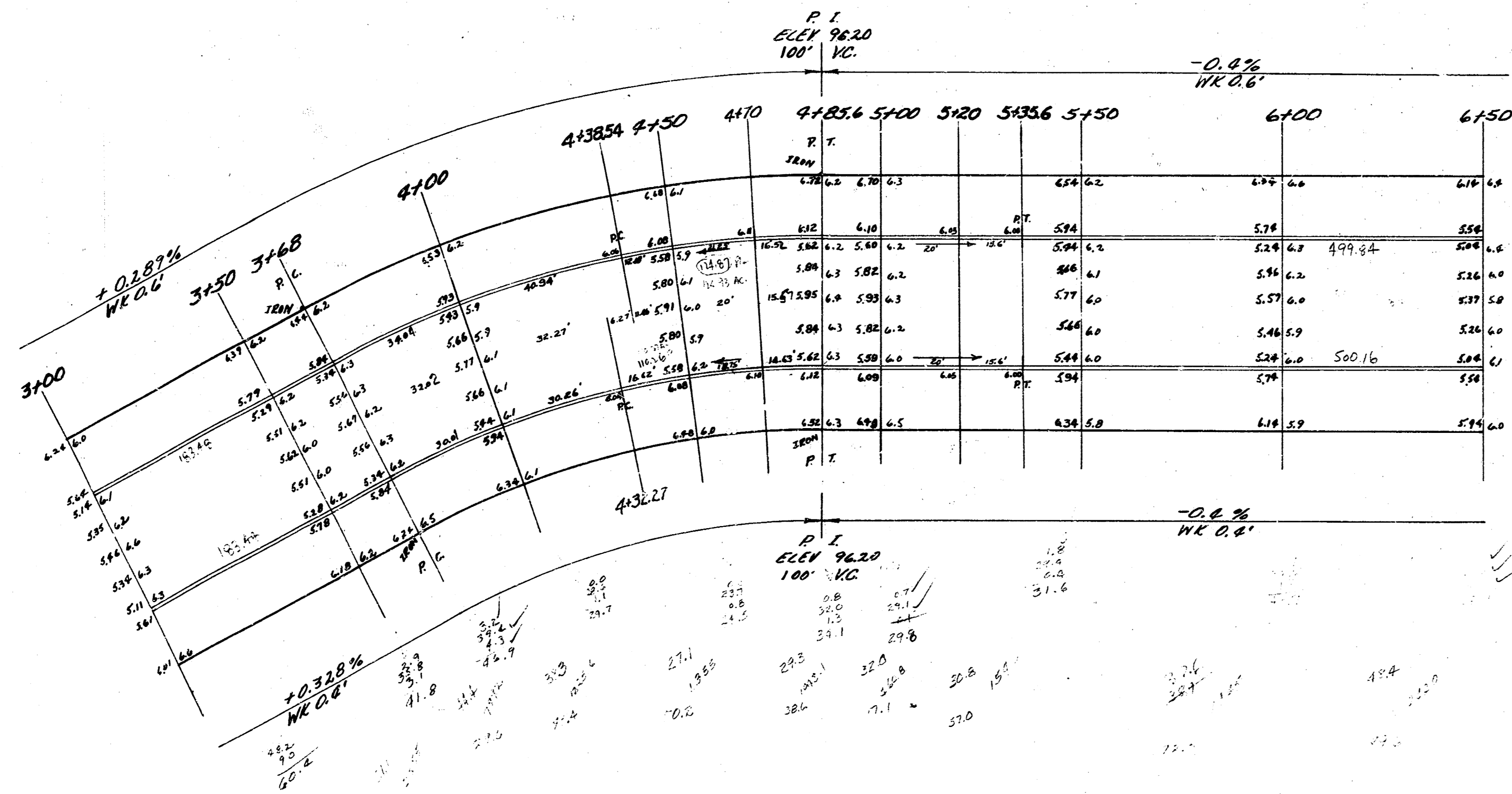
MOSLEY AVE.
N.L. WASHINGTON TO N.L. WASSALL
30' CONC & CB.
CITY OF WICHITA KANSAS
B.E. SMITH CITY ENGINEER
MAY 1953 PROJ. NO. C-13-46



DRAWN BY: KAC
 PLAN NO.: BR 5-179
 DATE: 5/53
 CHECKED: JF

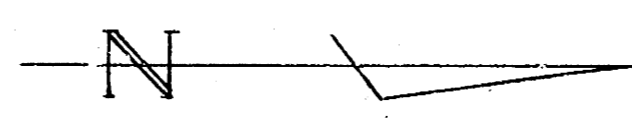
CURVE DATA 6' OFFSET FROM WGL LINE
 $E = 241.55'$ $A = 3.8'$ $L = 127.06'$

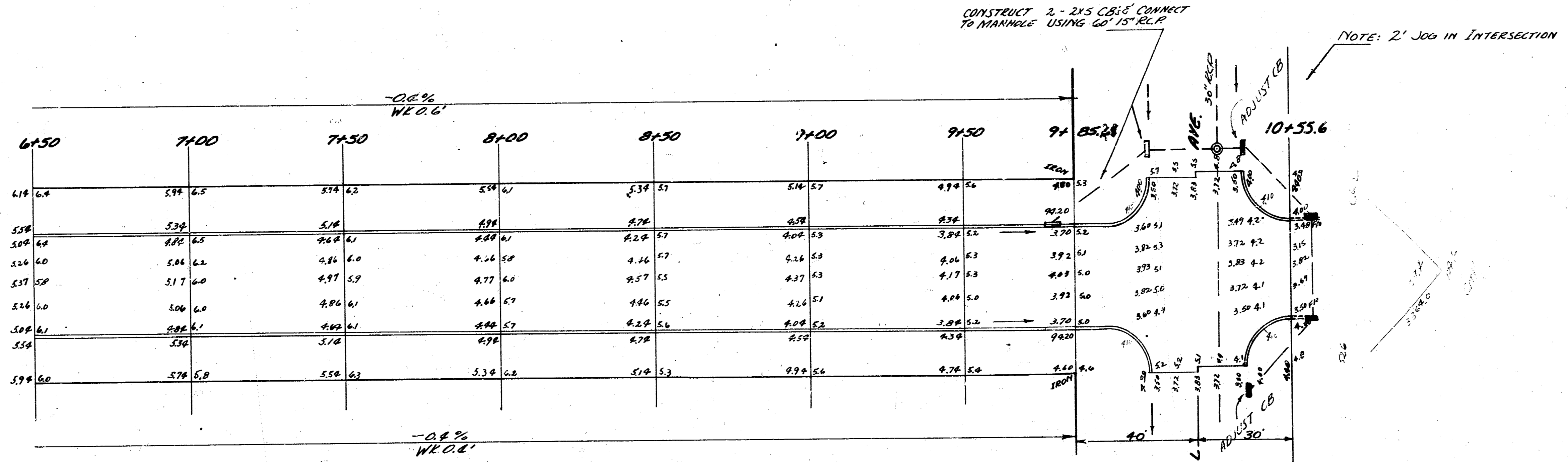
STA ON E	ARC LENGTH	CHORD	CHORD BEARING	DELT	TOTAL DELT
3+00	32.0	34.77	27.21	3°40'39"	
4+32.27	32.27	35.07	29.47	3°50'23"	7°38'56"
4+38.54	6.27	6.81	5.73	0°44'42"	8°23'40"
4+50	11.46	12.46	10.56	1°21'51"	9°45'31"
4+70	20.00	21.74	18.26	2°22'49"	12°08'20"
4+85.6	15.60	16.95	14.25	1°51'21"	13°59'41"



2
3

MOSLEY AVE.

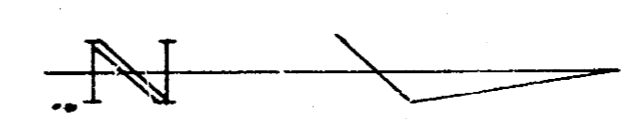




58.0
78.3

3
3

MOSLEY AVE



3 3 1 8