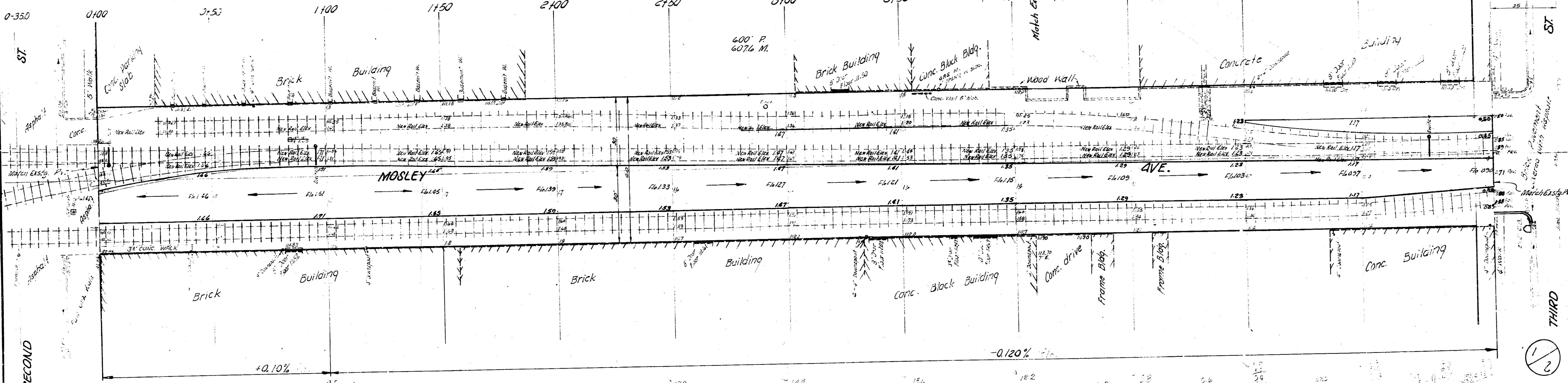
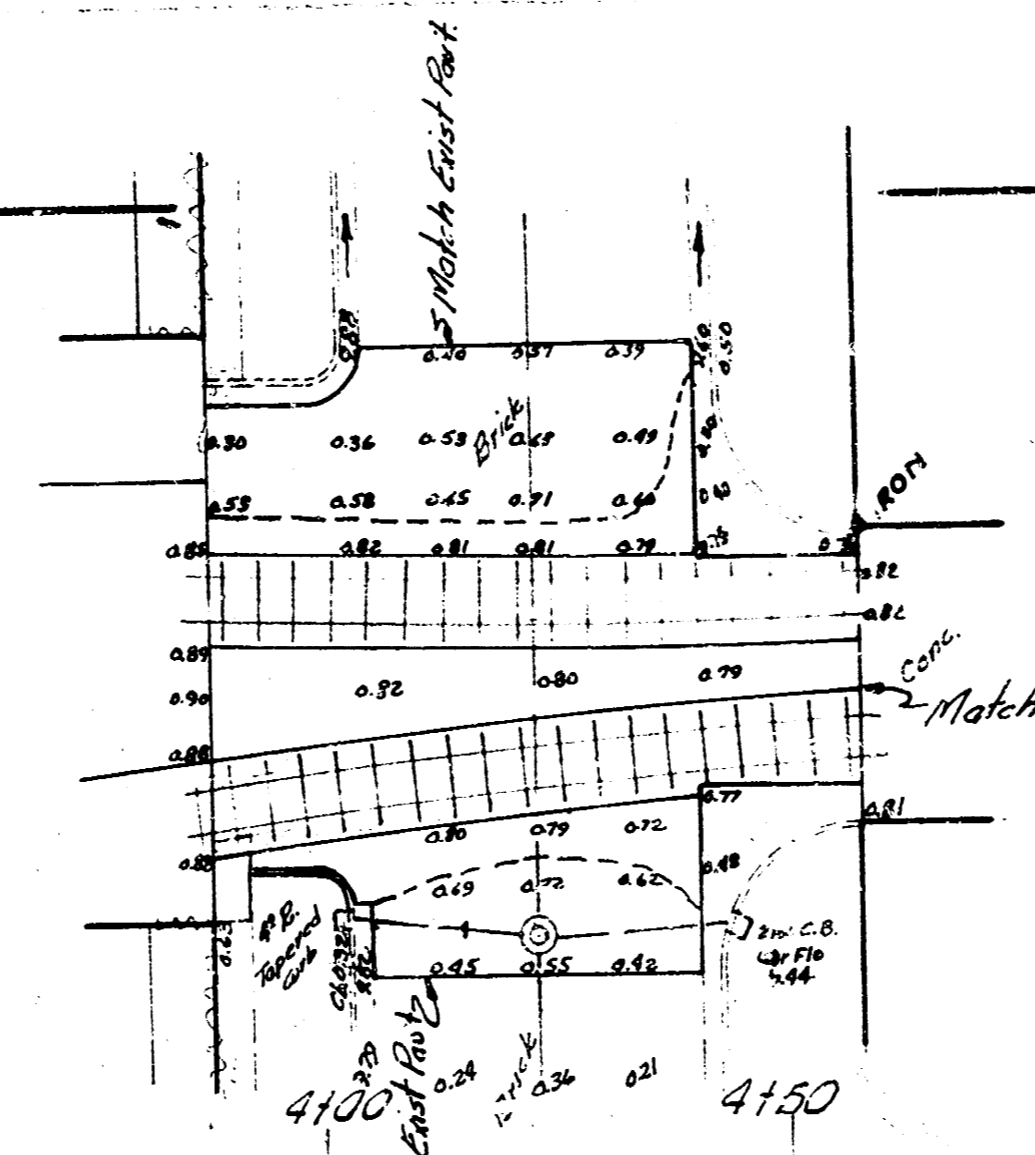
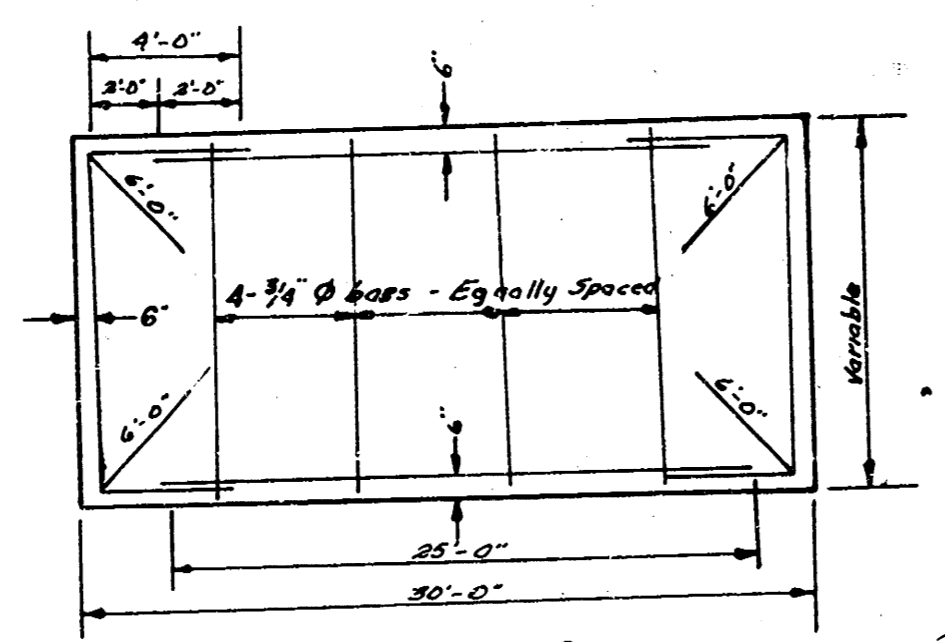


B.M. 110.53 "K" in Keeler c. wk. W. SW Mosley 1/3rd.
 B.M. 111.35 "R" in Richie c. wk. E. Mosley US of 2nd, 8' S. of N.L.

-TYPICAL STEEL PATTERN-
 No Scale

SCALE 1"=20'

Base - E. Mosley



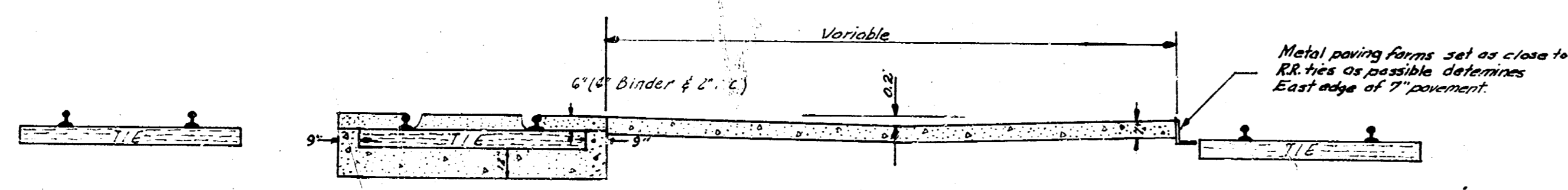
+0.10%

-0.120%

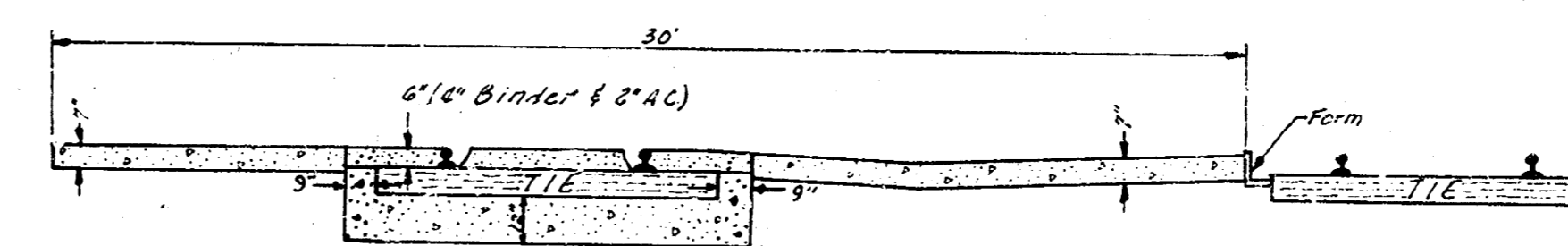


MOSLEY AVE.
 N.L. SECOND ST. to N.L. THIRD ST.
 30' - 7" CONC.
 CITY OF WICHITA, KANSAS
 B. E. SMITH CITY ENGINEER
 SEPT. 1957 C15-220

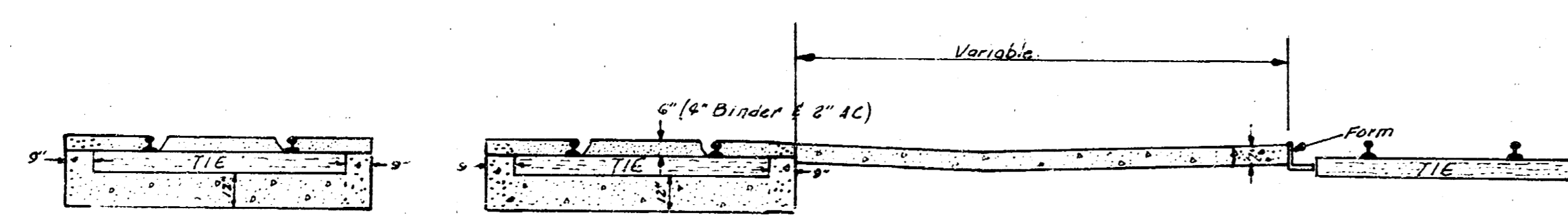




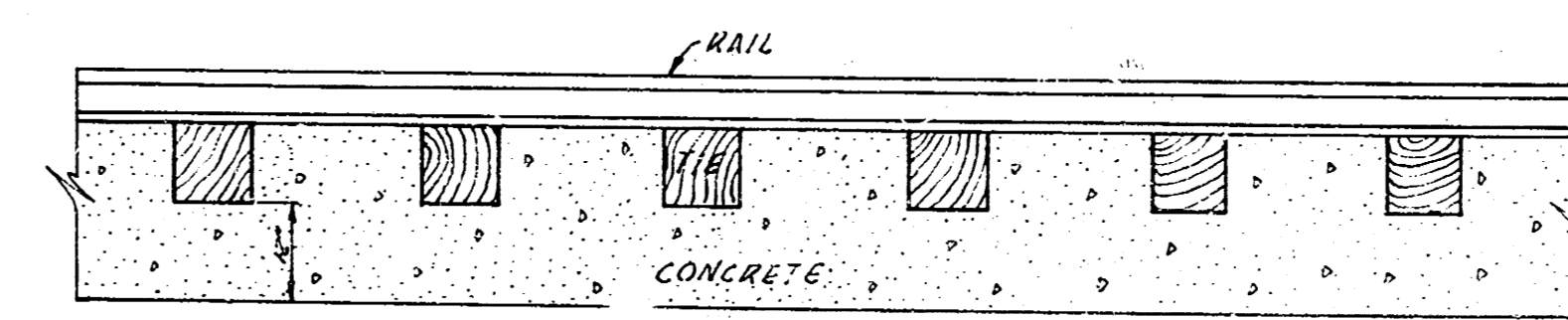
TYPICAL SECTION STA 1+00
SCALE 1"=4'-0"



TYPICAL SECTION STA 6+00
SCALE 1"=4'-0"

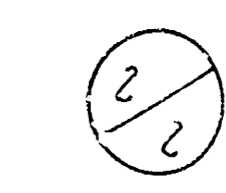


TYPICAL SECTION STA 4+10
SCALE 1"=4'-0"



TYPICAL SIDEVIEW
SCALE 1"=4'-0"

NOTE: BETWEEN, UNDERNEATH &
AT ENDS OF TIES TO BE PRESSURE
GROUTED WITH CRUSH ROCK 3/4" TO 2 1/2"
BY THE FRISCO R.R.



MOSLEY AVE
C15-220