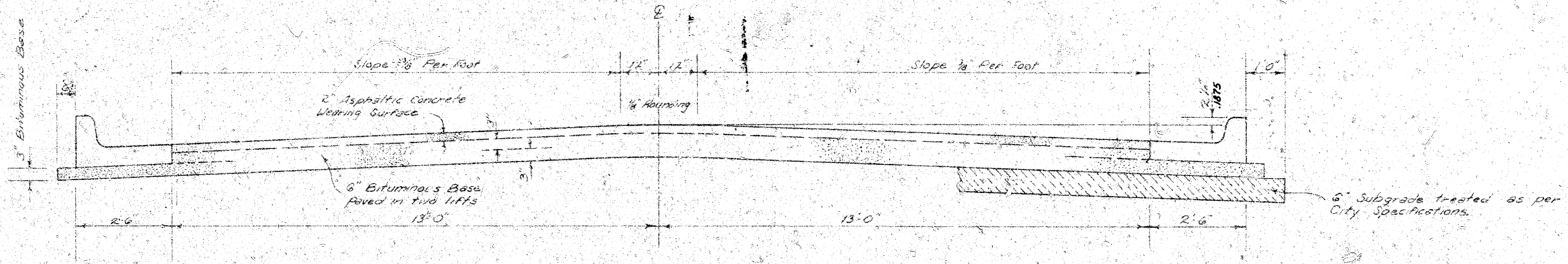


MT. CARMEL AVENUE

N.L. 11TH ST. N. TO & INCLUDING CUL - DE - SAC

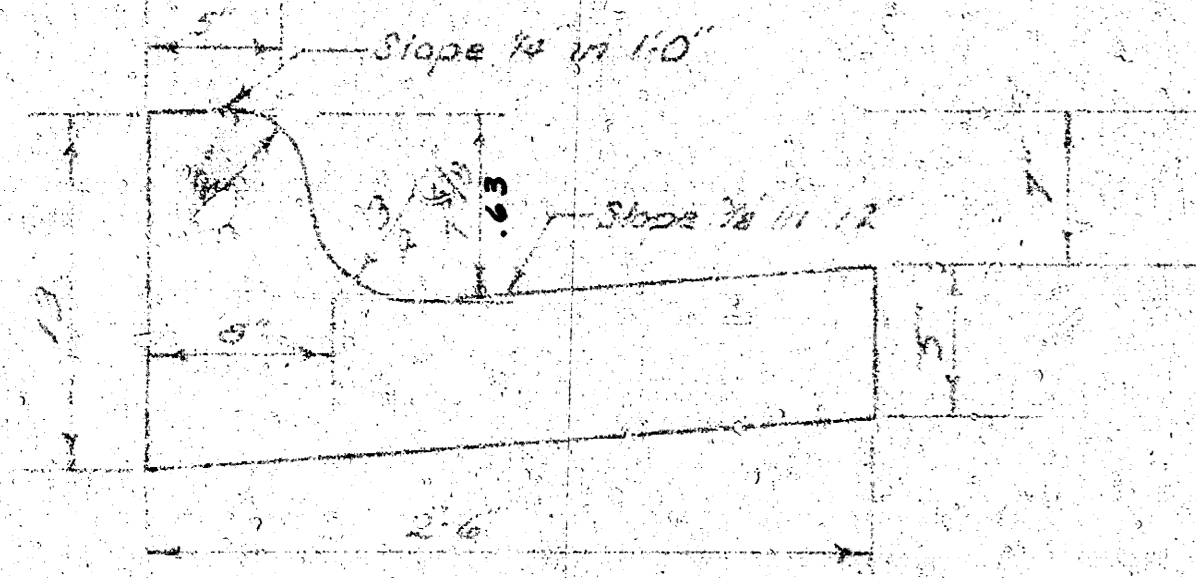


TYPICAL SECTION

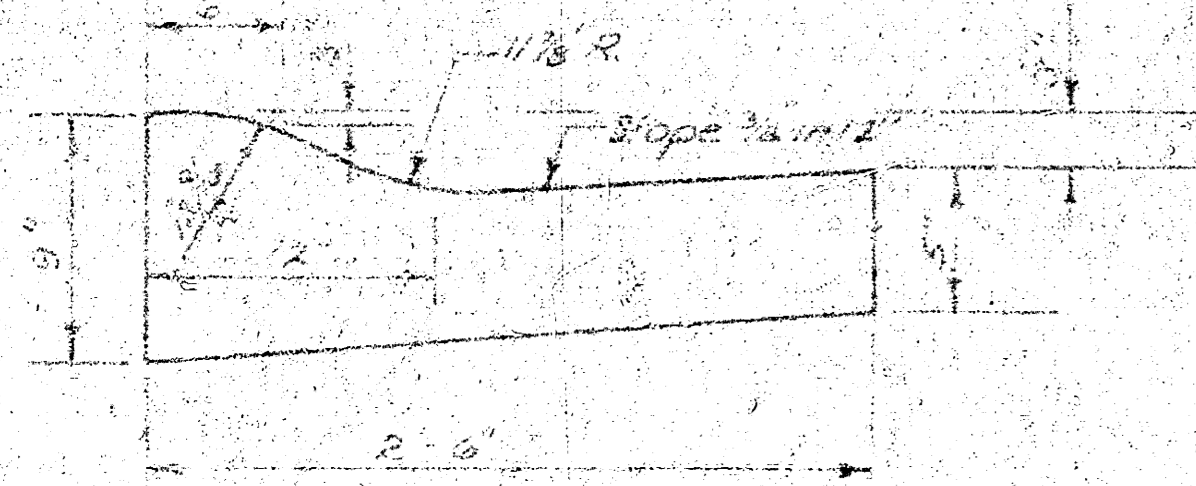
3' ASPHALTIC CONCRETE PAVEMENT WITH BITUMINOUS BASE

The A.C. pavement between the Comb. Curb & Gutter shall be paid as Sq. Yds. of A.C. Pavement (6 Bituminous Base). The Bituminous Base under the Comb. Curb & Gutter shall be paid as Sq. Yds. 3" Bituminous Base.

COMBINED CURB & GUTTER

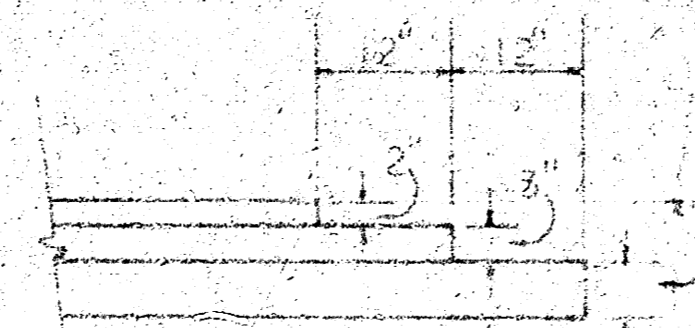


ROLL TYPE CURB & GUTTER



A TACK COAT OF EMULSIFIED ASPHALT (SS-1H) SHALL BE APPLIED AT AN APPROXIMATE RATE OF 0.05 GALLONS PER SQ. YD. BETWEEN LIFTS OF ASPHALTIC MATERIALS WHEN ORDERED BY THE ENGINEER. TACK COAT WILL NOT BE PAID FOR DIRECTLY AND SHALL BE CONSIDERED AS SUBSIDIARY TO PRICE BID FOR ASPHALTIC PAVEMENT.
 BITUMINOUS BASE AND ASPHALTIC CONCRETE WEARING SURFACE SHALL BE PLACED WITH A LAYDOWN MACHINE HAVING AUTOMATIC ELECTRONIC CONTROLS FOR CROWN AND GRADE. CONSTRUCTION JOINTS IN EACH LIFT SHALL BE STAGGERED A MINIMUM DISTANCE OF 1' WITH JOINTS IN PRECEDING LIFTS AND SUCH THAT A JOINT WILL BE CONSTRUCTED ON THE PAVEMENT CENTERLINE IN THE TOP LIFT.

DETAIL OF TRANSVERSE CONSTRUCTION JOINTS



TRANSVERSE CONSTRUCTION JOINTS SHALL BE CONSTRUCTED IN FLEXIBLE BASE PAVEMENTS AT LOCATIONS WHERE PAVEMENT TEMPORARILY ENDS TO FACILITATE FUTURE PAVEMENT CONSTRUCTION AS SHOWN BY DETAIL. THE COST OF CONSTRUCTING THE TRANSVERSE CONSTRUCTION JOINTS SHALL NOT BE MEASURED OR PAID FOR DIRECTLY BUT SHALL BE INCLUDED IN THE BID PRICE FOR SQUARE YARDS OF ASPHALTIC CONCRETE PAVEMENT.

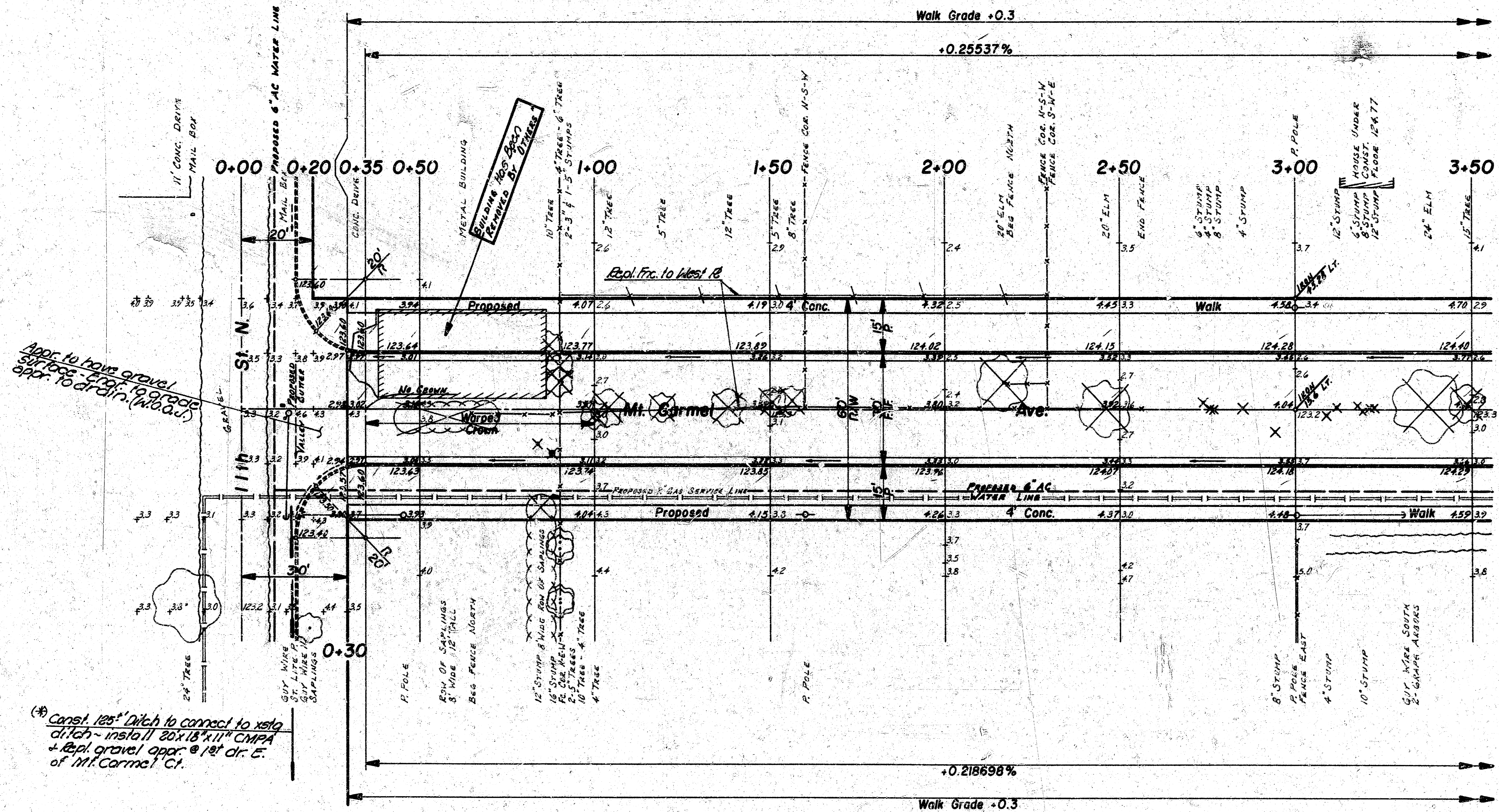
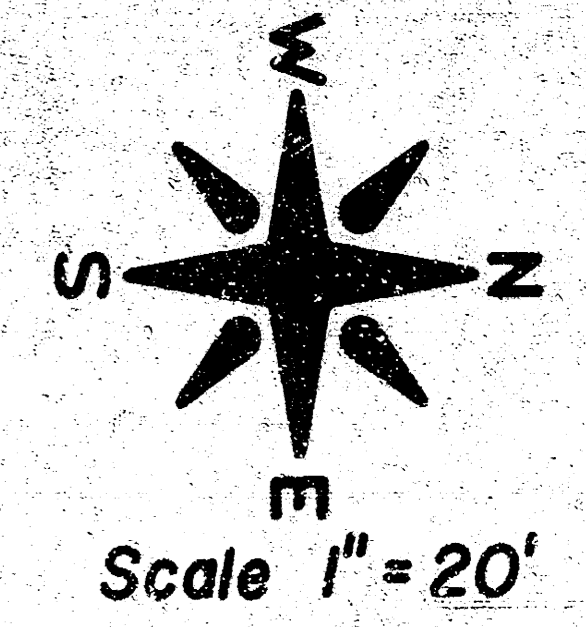
CITY OF WICHITA, KANSAS

DEPARTMENT OF PUBLIC WORKS — ENGINEERING

R. W. LINN CITY ENGINEER

DATE _____ PROJ. NO. DAKS 575077

Baseline Between 0+00 & 3+70 Is East Curb Line
 B.M. 125.58 SE Cor. Conc. Porch 1101 N. Custer
 B.M. 123.93 2ea. 40" Nail SW Side P. Pole NE Cor. Mt. Carmel & 11th St. N.
 Stationing On Centerline Mt. Carmel Ave.



NOTE: TREES TO BE REMOVED ARE MARKED WITH AN 'X' EXCEPT THAT ANY TREE MARKED FOR REMOVAL WHICH IN THE OPINION OF THE ENGINEER CAN BE SAVED, SHALL BE SAVED.

NOTE: EVERGREEN REMOVAL AND CARE REMOVAL TO BE INCIDENTAL TO PROJECT.

NOTE: ALL FENCE WITHIN THE R/W OF MT. CARMEL AVE. IS TO BE REMOVED. CONTRACTOR IS TO CONTACT PROPERTY OWNERS AS TO REPLACING FENCE @ W/P. AS SHOWN ON PLANS.

(* Ditching to be incidental to proj. 18" MIN. CMPA to be bid by the Lin. It.

(* Const. 125" Ditch to connect to existing ditch - install 20" x 18" x 11" CMPA + Repl. gravel approx @ 1st dr. E. of Mt. Carmel Ct.

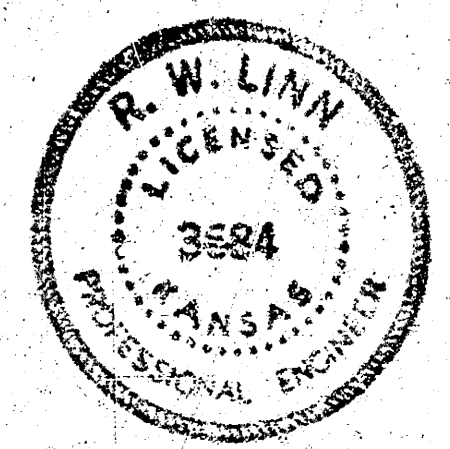
Earthwork Property

EXCAVATION	167.7 Cu. Yds.	COMPACTED FILL	654.5 Cu. Yds.	BARROW	1473.9 Cu. Yds.
+10%	16.8 Cu. Yds.	+10%	63.5 Cu. Yds.	+20%	294.8 Cu. Yds.
TOTAL	184.5 Cu. Yds.	TOTAL	720.0 Cu. Yds.	TOTAL	1768.7 Cu. Yds.

MANIPULATION 2667.5 Sq. Yds.

SUB-GRADE
 SUB-GRADE TREATMENT SHALL BE DETERMINED BY THE FIELD ENGINEER. SUB-GRADE TREATMENT MAY CONSIST OF LIME TREATMENT, COMPACTED FILL, SUB-GRADE MODIFICATION, OR ANY COMBINATION OF THESE.

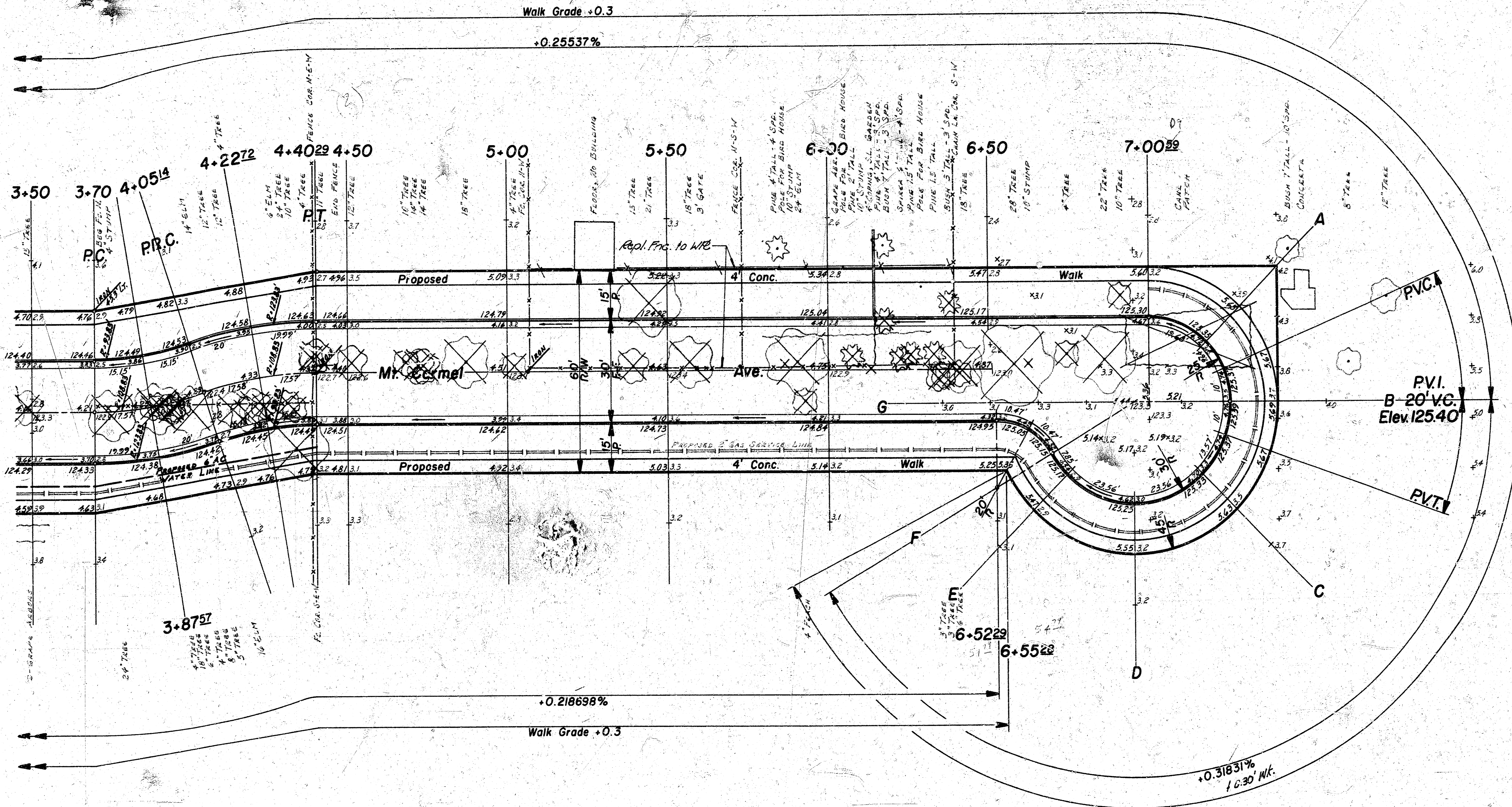
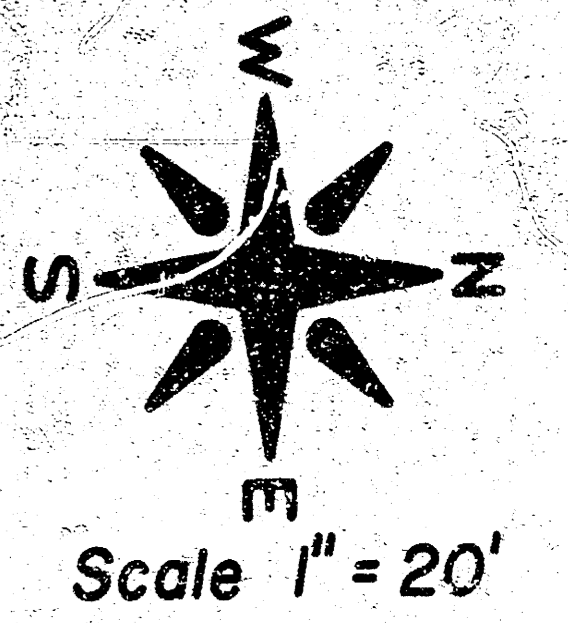
NOTE TO FIELD ENGINEER & CONTRACTOR
 Grade parking and clear right-of-way for proposed sidewalk. Compact fill in sidewalk area. TO BE CONSTRUCTED BY "OTHERS".



Mt. Carmel Avenue
 N.L. 11th St. N. To & Including
 Cul-de-sac
 26-2-30 Asphaltic Concrete
 City Of Wichita, Kansas
 R. W. Linn City Engineer
 Proj. No. DAKS 575077
 Date :

Baseline Between 3+70 & 4+4029 Is A Straight Line From Centerline 'C' To Centerline 'P.T.
 Baseline Between 4+4029 & 8+00 Is East Curb Line

B.M. 125.58 S.E. Cor. Conc. Parch 1101 N. Custer
 B.M. 123.93 2ea. 40" Nail SW Side P Pole NE Cor. Mt. Carmel & 11th St. N.
 Stationing On Centerline Mt. Carmel Ave.



$\Delta = 18'30.05''$ $R = 108.83'$ $T = 17.73'$ $L = 35.14'$ $LC = 34.99'$

CURVE DATA BASED ON CTR. LINE RAD. $\Delta = 9'15.02''$

STA.	ARC.	CHORD LENGTH		DEFLECTION	TOTAL DEFLECTION
		OFF LCB	OFF PCB		
3+70				0' 00' 00"	0' 00' 00"
3+87 ²¹	17.57'	13.84'	21.26'	4' 37' 29"	4' 37' 29"
4+05 ¹²	17.57'	13.84'	21.26'	4' 37' 30"	9' 14' 59"

DEFL./FT. = 15.79339526 MIN.

$\Delta = 18'30.05''$ $R = 108.83'$ $T = 17.73'$ $L = 35.14'$ $LC = 34.99'$

CURVE DATA BASED ON CTR. LINE RAD. $\Delta = 9'15.02''$

STA.	ARC.	CHORD LENGTH		DEFLECTION	TOTAL DEFLECTION
		OFF LCB	OFF PCB		
4+05 ¹²				0' 00' 00"	0' 00' 00"
4+22 ²²	17.58'	21.27'	13.85'	4' 37' 39"	4' 37' 39"
4+40 ²²	17.57'	21.26'	13.84'	4' 37' 29"	9' 15' 08"

DEFL./FT. = 15.79339526 MIN.

Mt. Carmel Avenue
 N.L. 11th St. N. To & Including
 Cul-de-sac
 26-2-30 Asphaltic Concrete
 City Of Wichita, Kansas
 R. W. Linn City Engineer
 Proj. No. DAKS 575077
 Date: