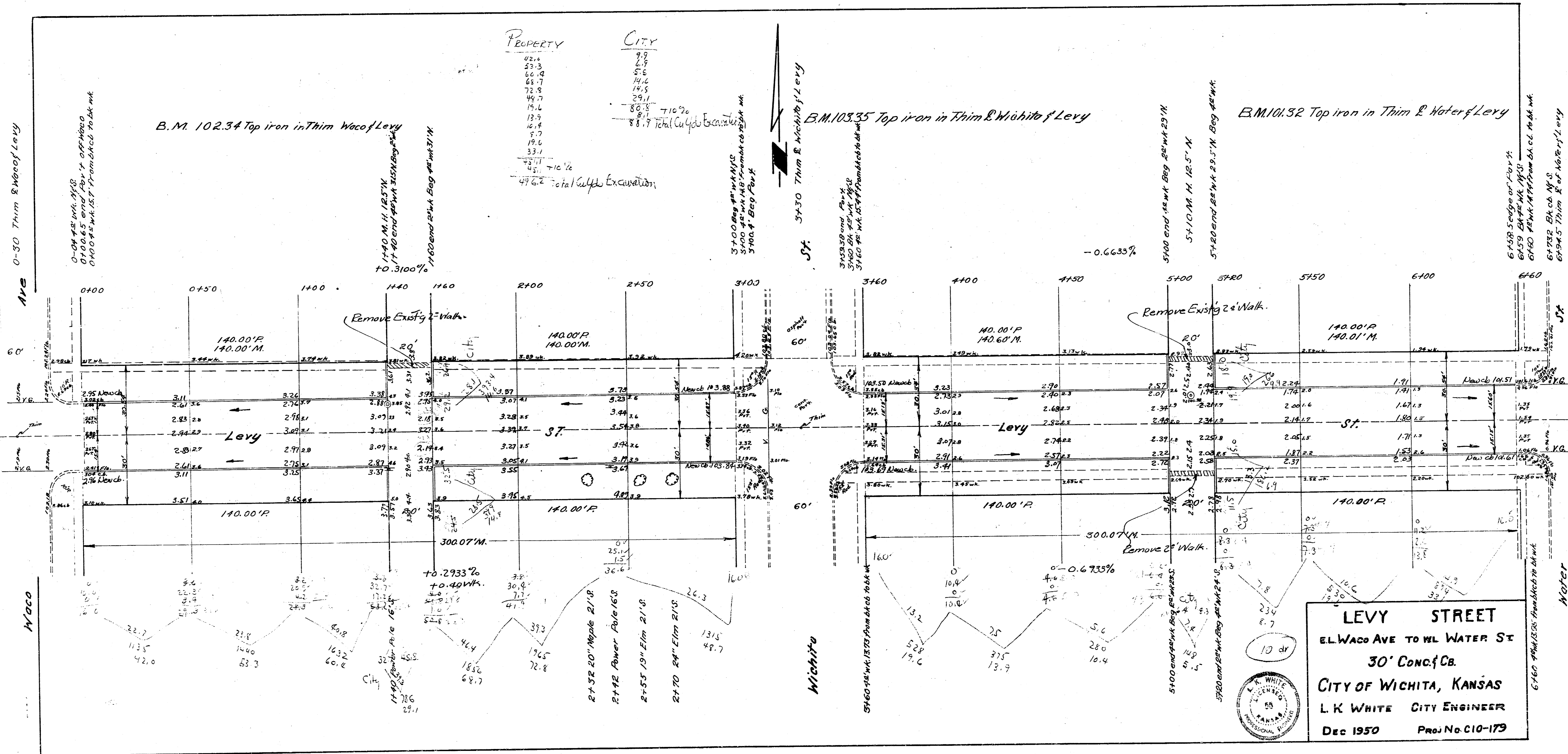


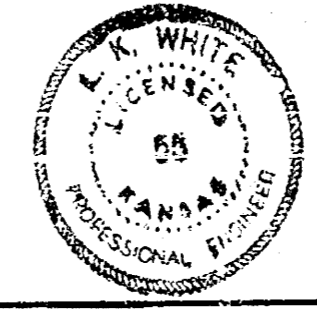
M=0-7



PROPERTY	CITY
42.4	9.9
53.3	7.9
60.9	6.6
68.7	14.6
72.5	14.5
49.7	29.1
15.4	86.3
12.9	81.1
16.4	71.0
17.6	86.3
33.1	86.3
45.1	86.3
47.6	86.3

88.9 Total Cully Excavation

**LEVY STREET**  
 EL WACO AVE TO WL WATER ST  
 30' CONC. CB.  
 CITY OF WICHITA, KANSAS  
 L. K. WHITE CITY ENGINEER  
 DEC 1950      Proj. No. C10-179

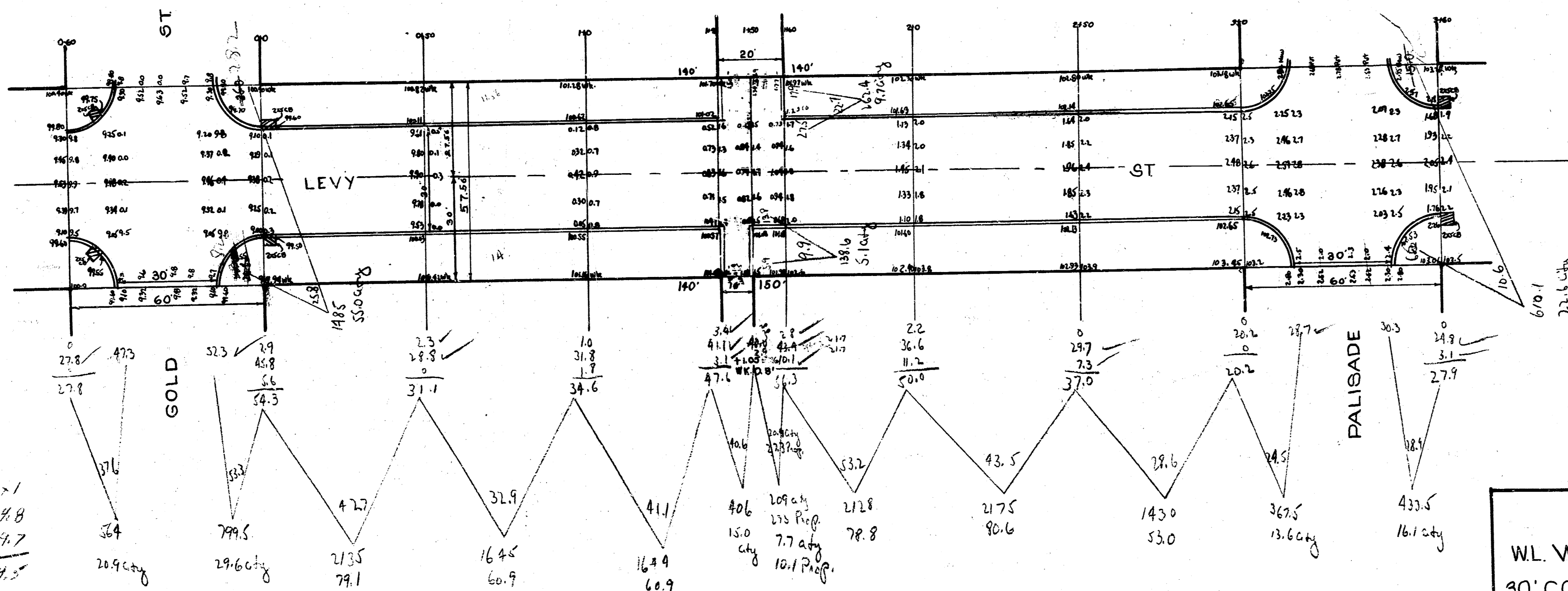


B.M. 100.76 "I" on Coping Lug NW Cor. Gold & Levy  
 B.M. 102.51 "r" on C.B. at end C.B. at N.W. Cor. Palisade & Levy  
 B.M. 102.32 "Iron in Thumb" C. of Waco at C. of Levy  
 B.M. 106.80 "T" in Tray Hyd. N.W. Cor. Levy & Palisade

RESET EXISTING CATCH BASINS AT LEVY & GOLD TO GRADES SHOWN ON PLAN  
 INSTALL C.B. AT S.E. COR. LEVY & GOLD

REMOVE CROSSWALKS ON N. SIDE OF INTERSECTION AT LEVY & GOLD

RESET EXISTING CATCH BASINS ON E. SIDE PALISADE TO GRADES SHOWN ON PLAN  
 ELIMINATE C.B. ON S.W. COR.



Private	City
78.1	20.9
60.9	24.6
60.9	15.0
10.1	7.7
78.8	13.6
80.6	16.1
53.0	55.0
	51
	9.7
43.4	21.6
	19.5

TOTALS

PRIO	6.21
465.7	214.8
316.1	24.7
74.0	249.5

LEVY ST  
 W.L. WACO TO W.L. GOLD  
 30' CONCRETE WITH INTEGRAL C.B.  
 CITY OF WICHITA, KANS.  
 L.K. WHITE CITY ENGINEER  
 NOV. 1946

