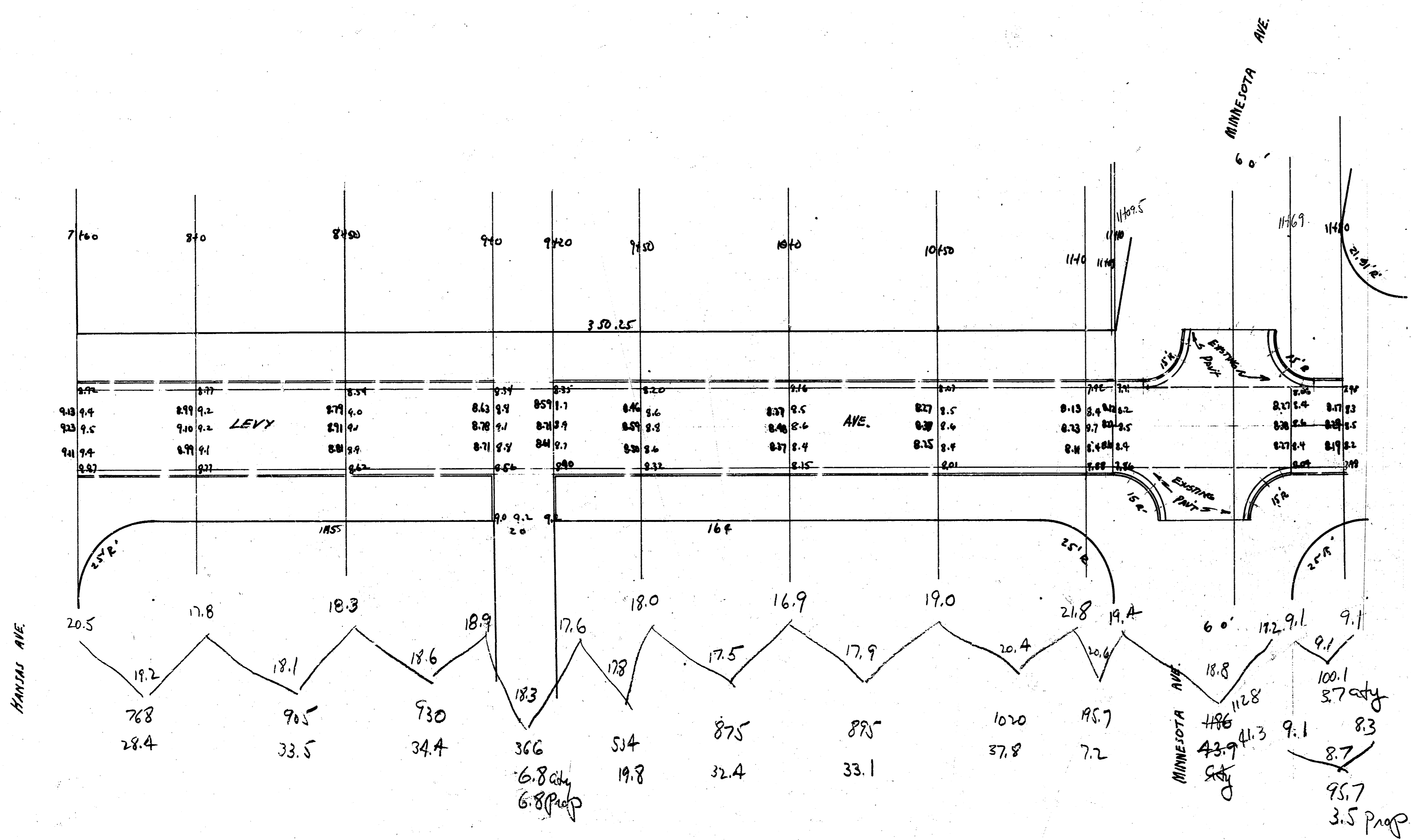


	Property	City
	2.2	18.0
	22.2	11.7
	33.3	6.5
	34.6	53.0
	35.2	7.3
	7.3	71% 89.2
	33.7	8.9
	31.7	
	32.4	total 90.1
	18.3	
71%	240.9	
total	250	
	275.9	



Prop  
 28.4  
 33.5  
 34.4  
 1.8  
 19.8  
 32.4  
 33.1  
 37.8  
 7.2  
 3.5  
 236.9  
 +10%  
 260.6 Cuyd

City  
 6.8  
 43.9  
 3.7  
 54.4  
 +10%  
 59.8 Cuyd

