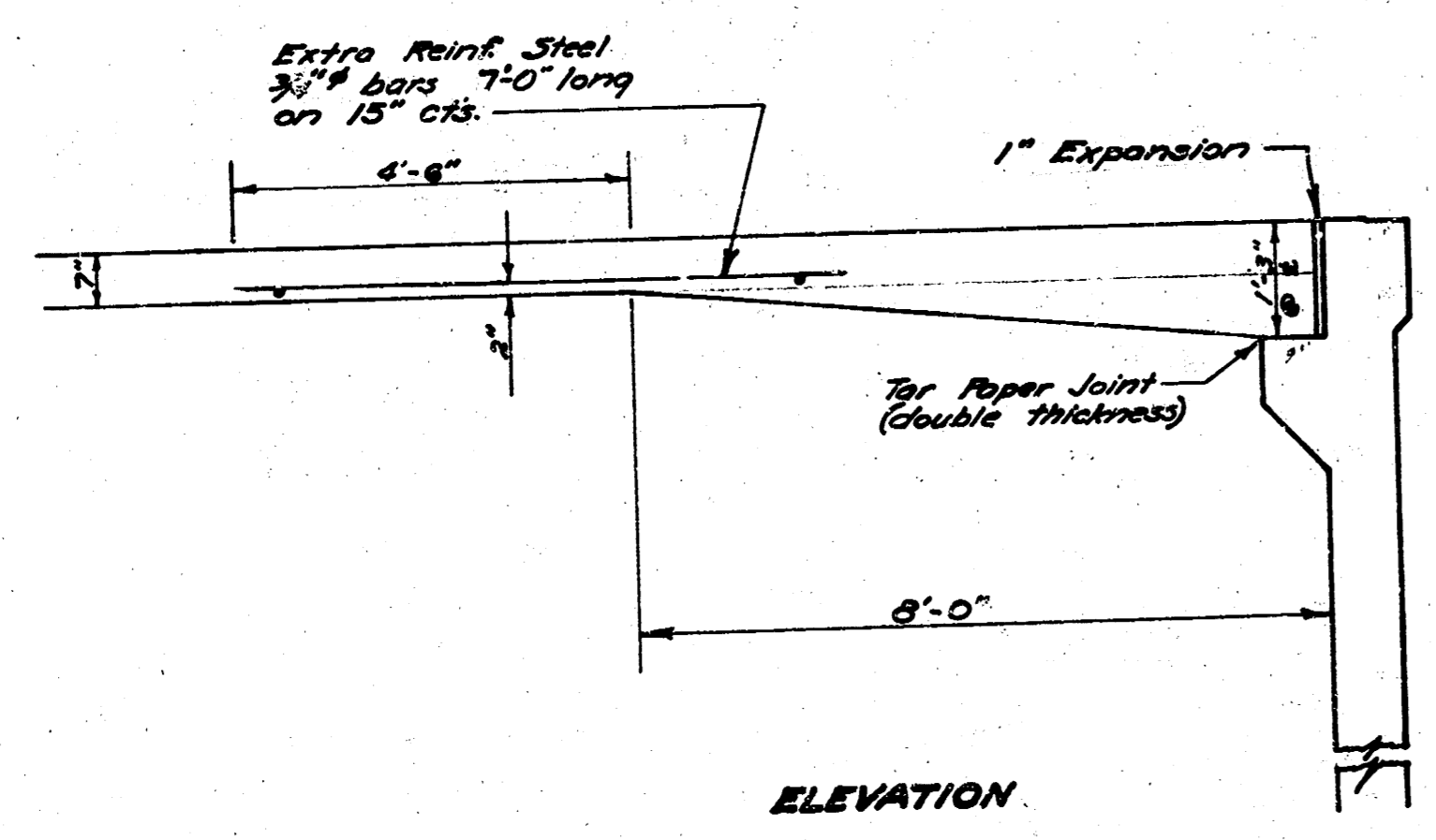
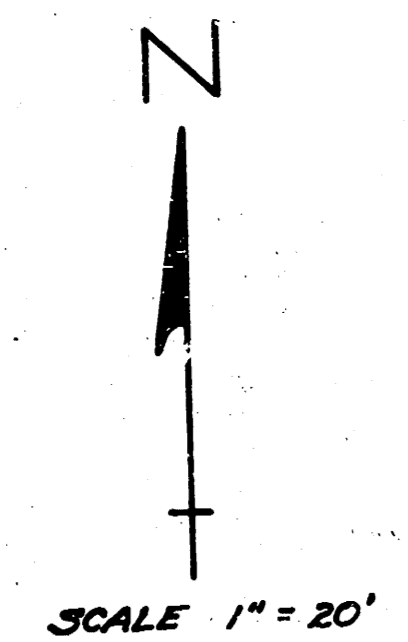
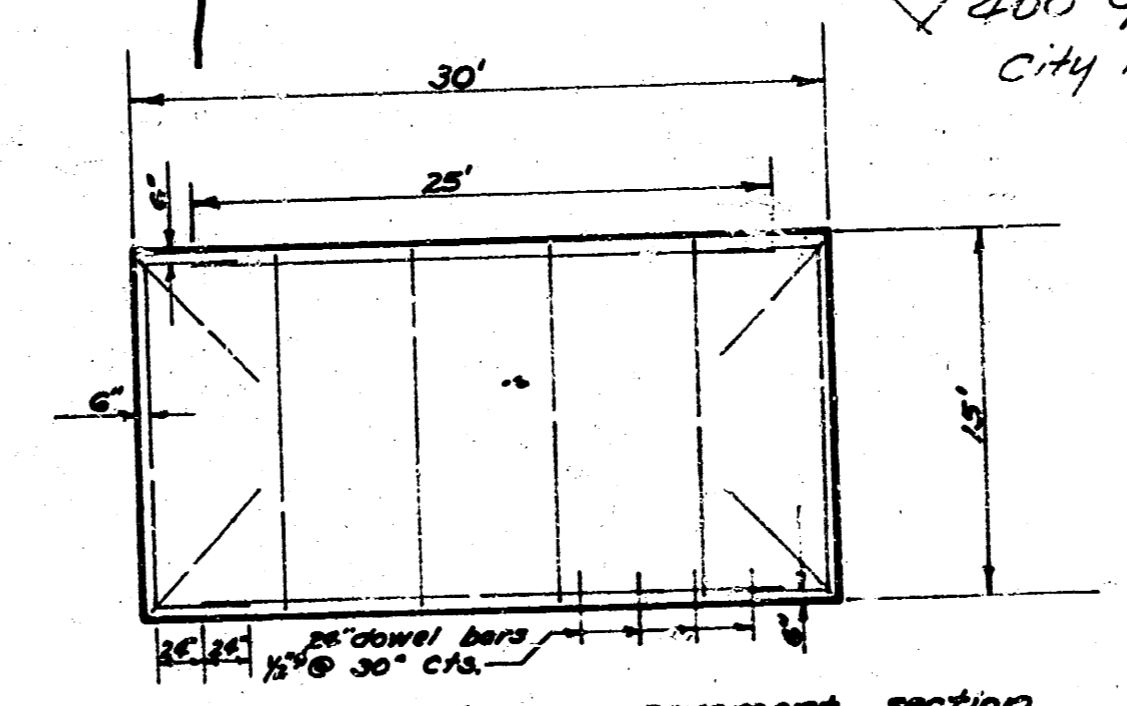


Note Sheet No. C12-139
 3-18

NOTE TO FIELD ENGINEER
 Cross section prior to
 construction of pavement.



Detail showing increased pavement
 thickness at bridge approach.
 Scale 1/2" = 1'-0"



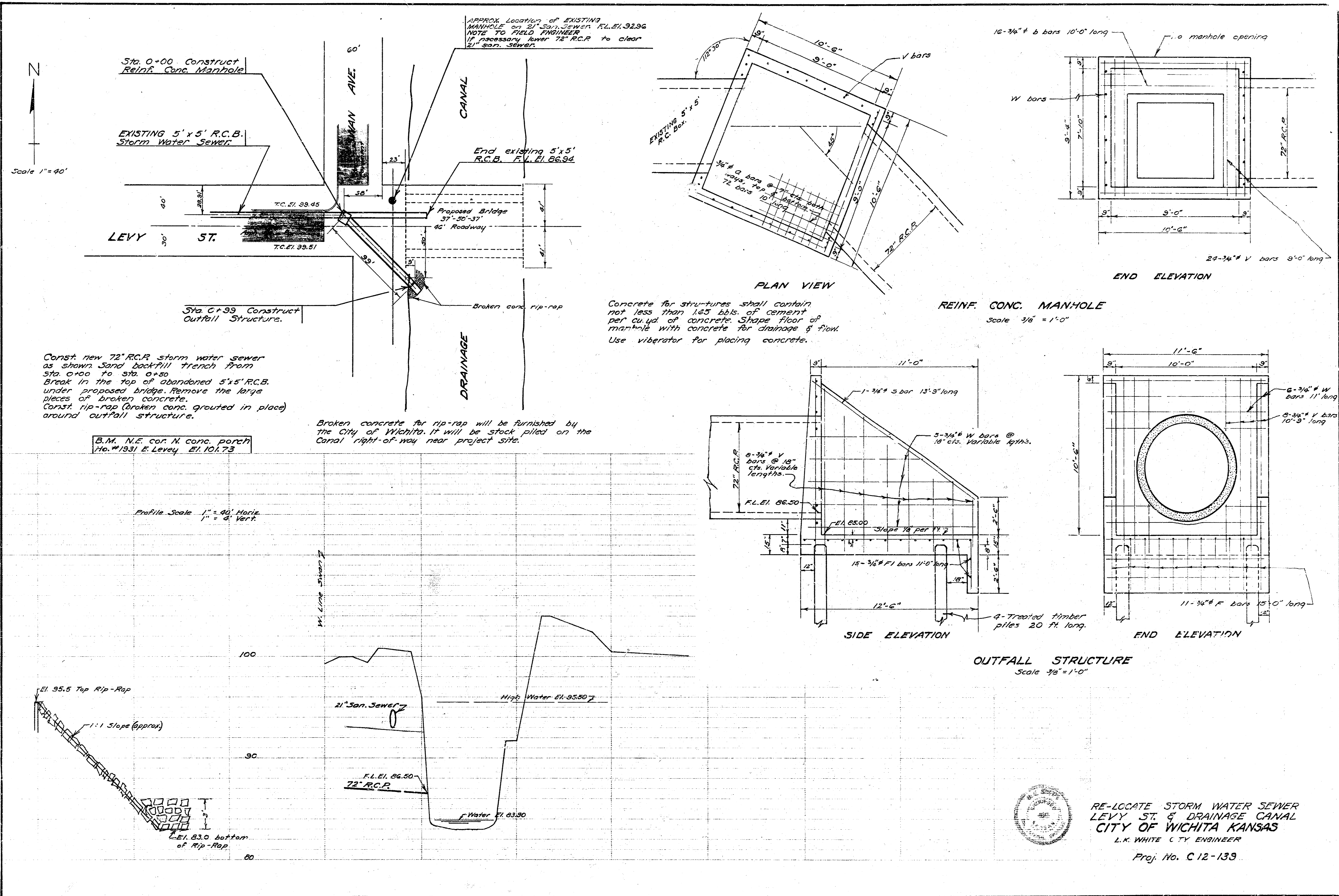
Plan view of typical conc. pavement section
 to show standard reinf. steel pattern. For sections
 other than 30' x 15' vary steel lengths accordingly.
 Scale 1/4" = 1'-0"

(Now Mr. Vernon)
LEVY STREET
 W. Line SWAN to E. Line
 DRAINAGE CANAL
 7" Conc. Pavement & Integral Curb
 37'-50'-37" Deck Girder Bridge
CITY OF WICHITA KANSAS
L.K. WHITE CITY ENGINEER

Proj. No. C12-139
 Date, 3-13-52
 J.L.A.



1



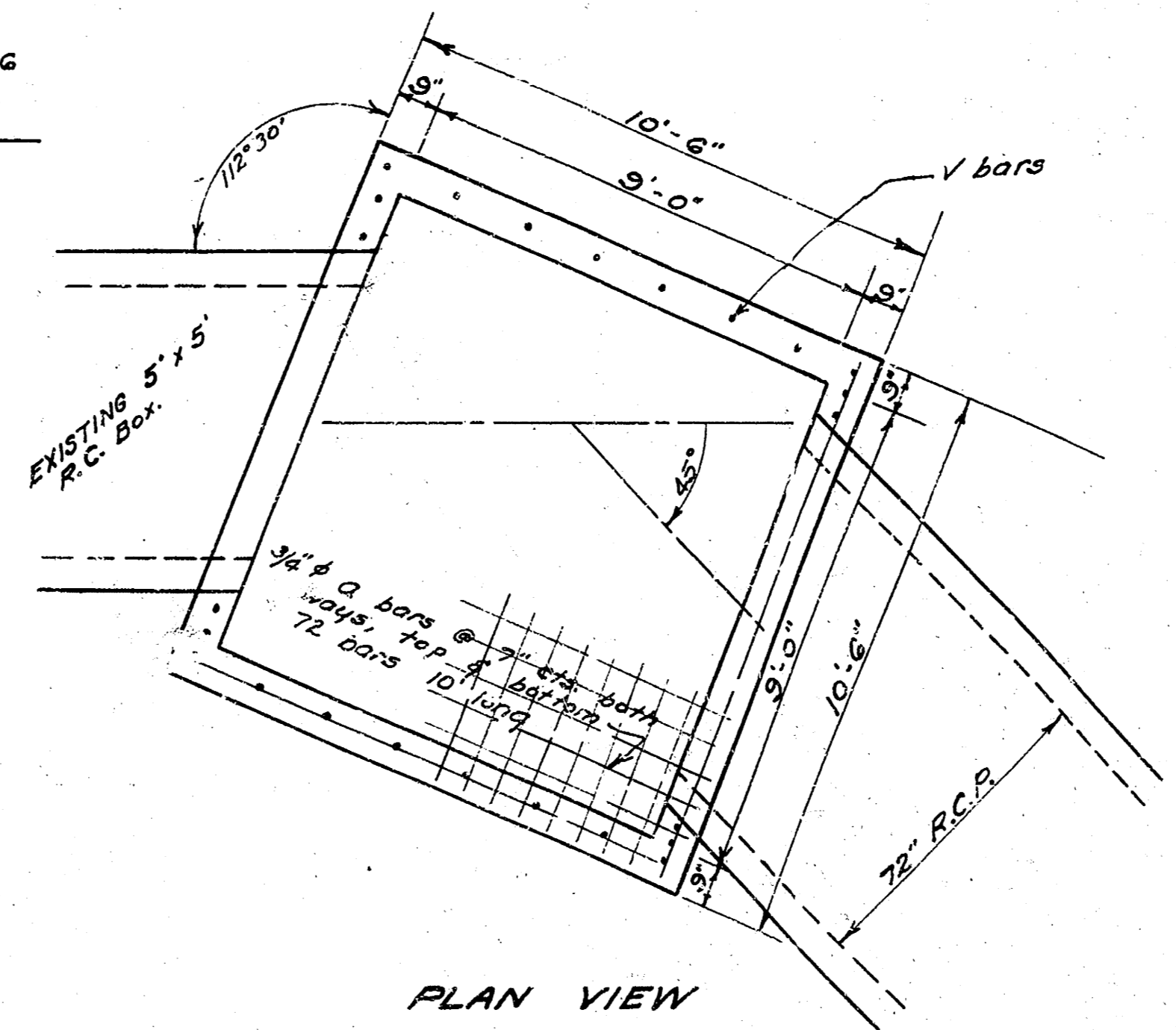
Scale 1" = 40'

Const new 72" R.C.P. storm water sewer as shown Sand backfill trench from Sta. 0+00 to Sta. 0+99. Break in the top of abandoned 5'x5' R.C.B. under proposed bridge. Remove the large pieces of broken concrete. Const rip-rap (broken conc. grouted in place) around outfall structure.

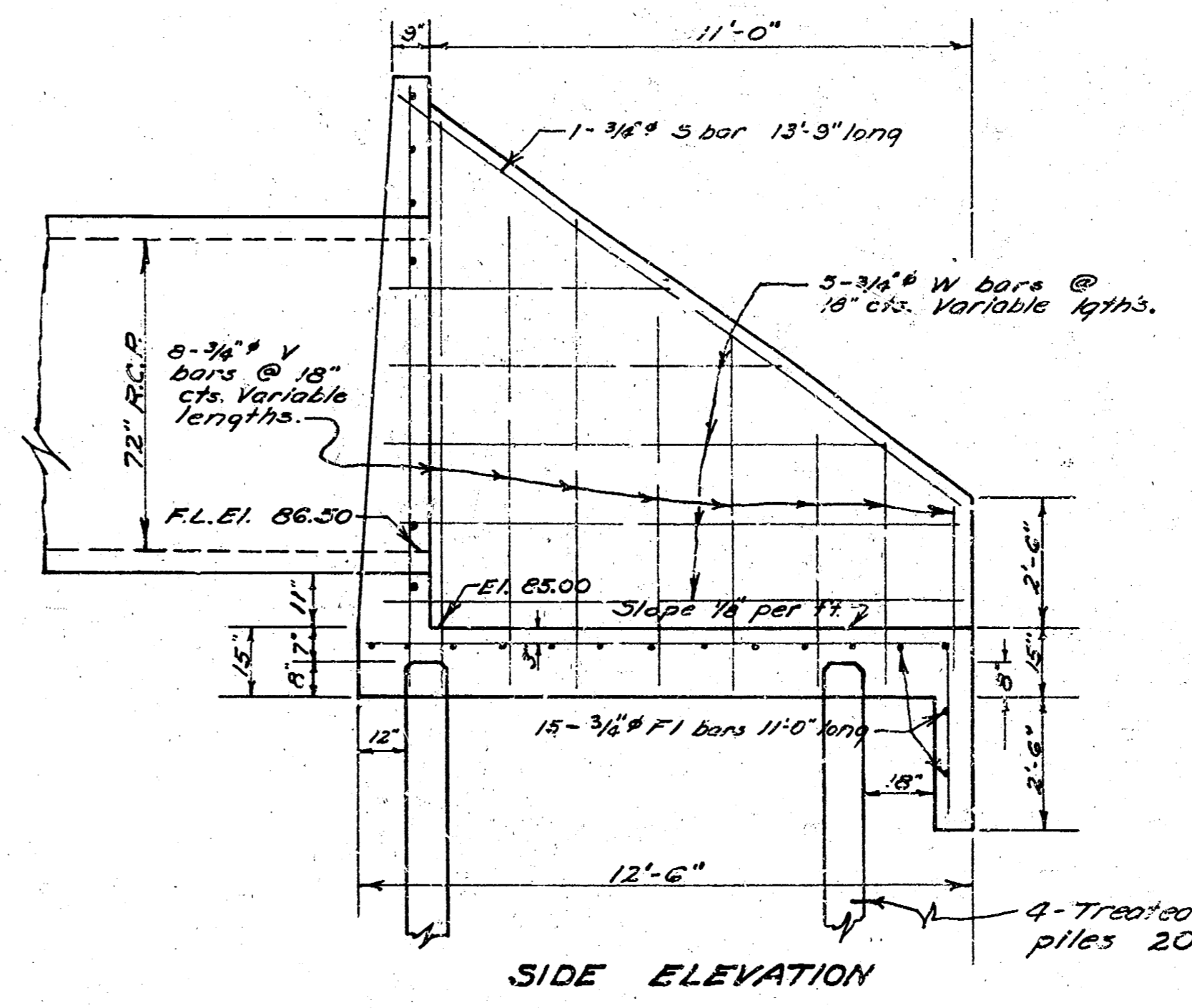
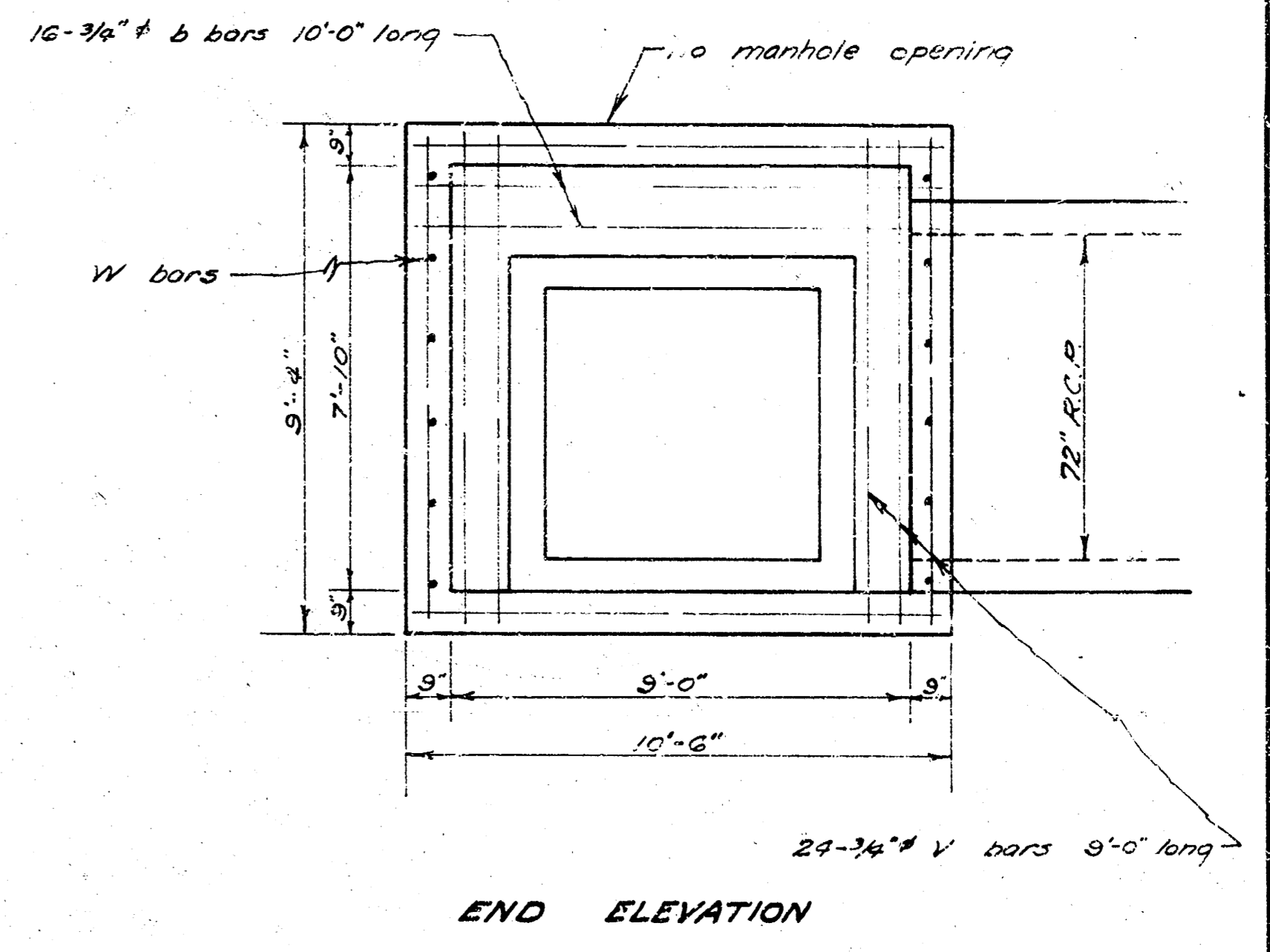
B.M. N.E. cor. N. conc. porch Ho. #1931 E. Levey El. 101.73

Broken concrete for rip-rap will be furnished by the City of Wichita. It will be stock piled on the Canal right-of-way near project site.

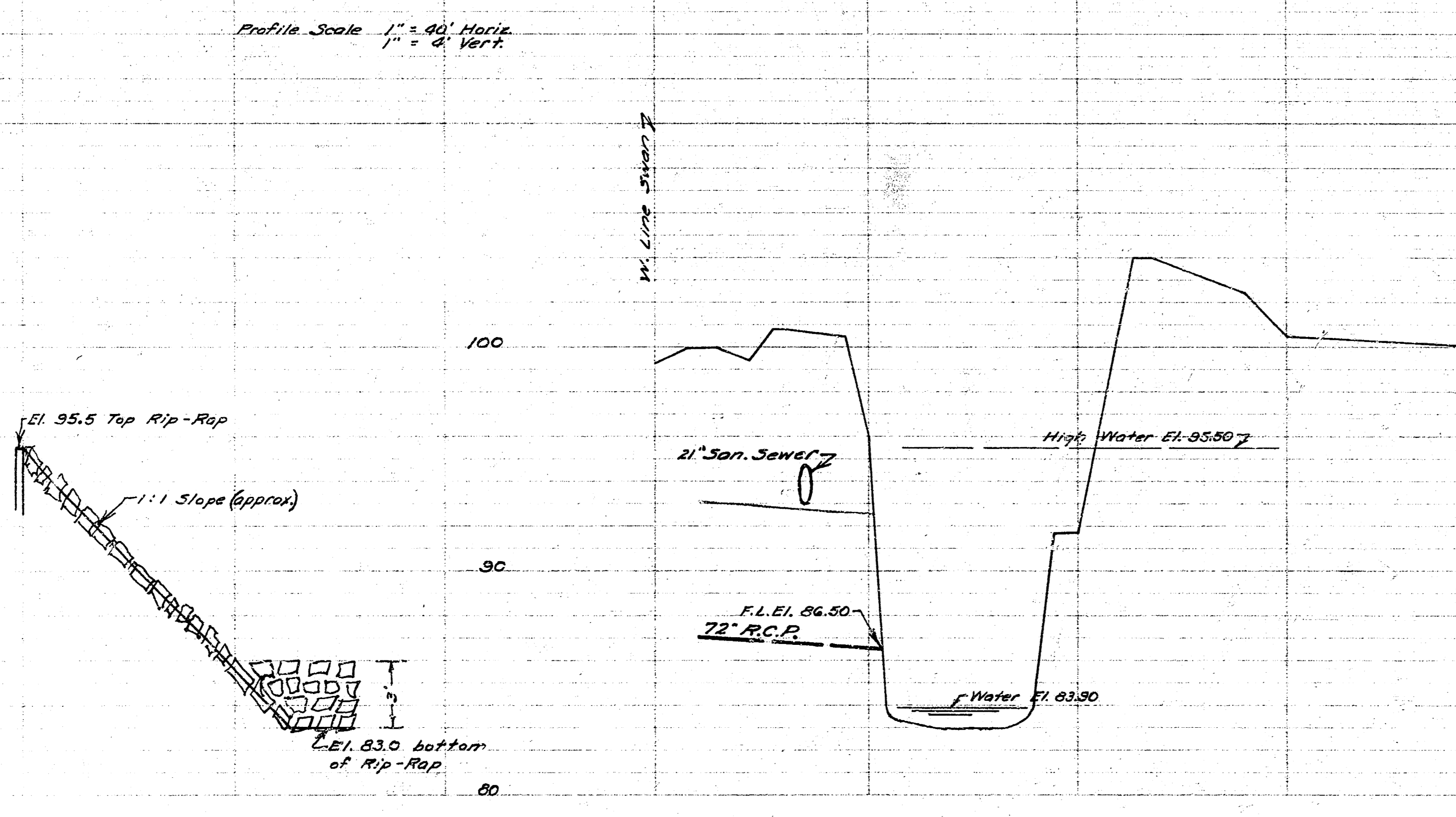
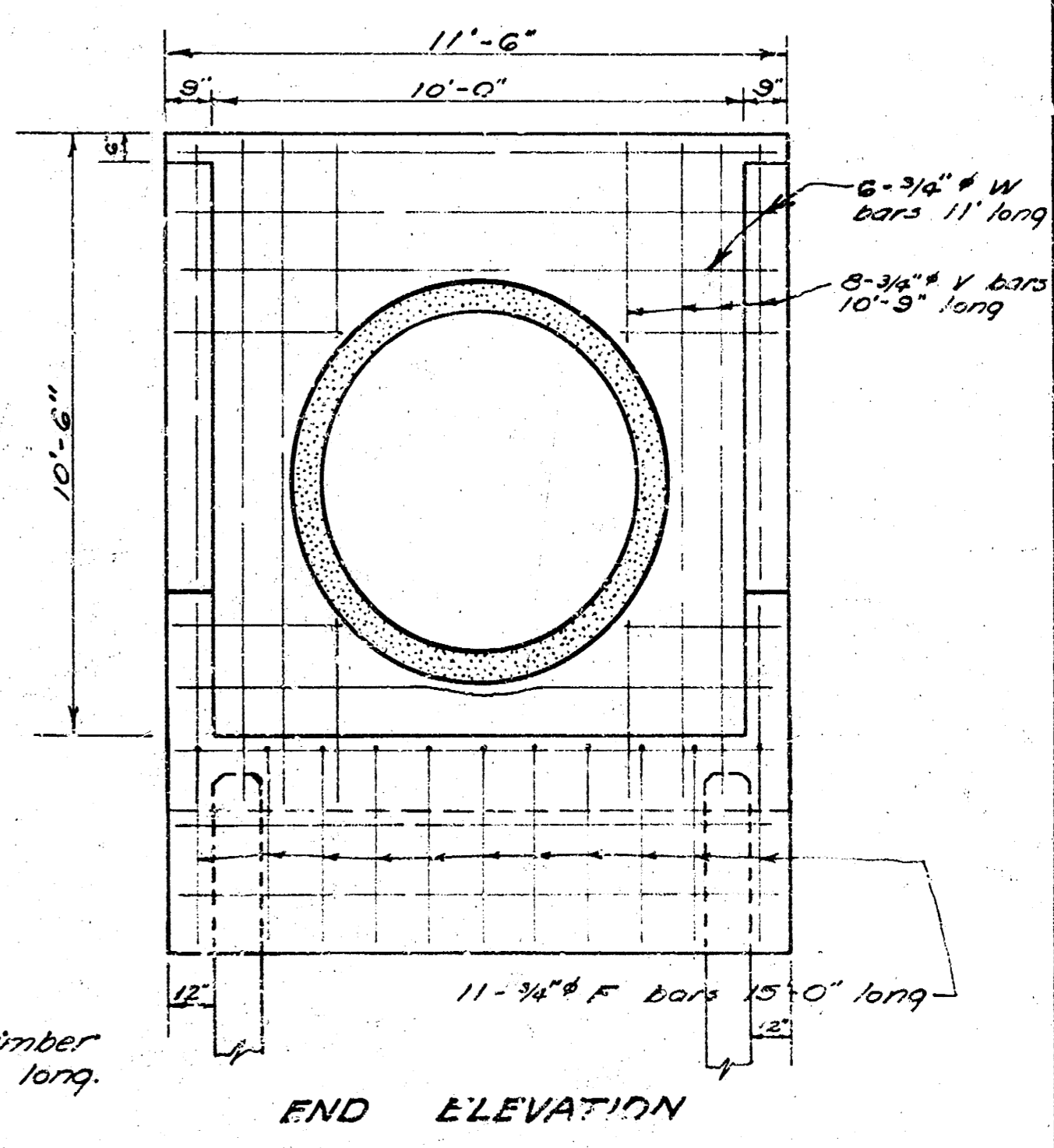
Concrete for structures shall contain not less than 145 lbs. of cement per cu. yd. of concrete. Slope floor of manhole with concrete for drainage & flow. Use vibrator for placing concrete.



REINF. CONC. MANHOLE Scale 3/8" = 1'-0"



OUTFALL STRUCTURE Scale 3/8" = 1'-0"



Date: 9-10-52
 Drawn by J.L.A.
 Checked by
 Note Book No. M+21, CHAM-78



RE-LOCATE STORM WATER SEWER
 LEVY ST. & DRAINAGE CANAL
 CITY OF WICHITA KANSAS
 L.K. WHITE CITY ENGINEER
 Proj. No. C 12-139