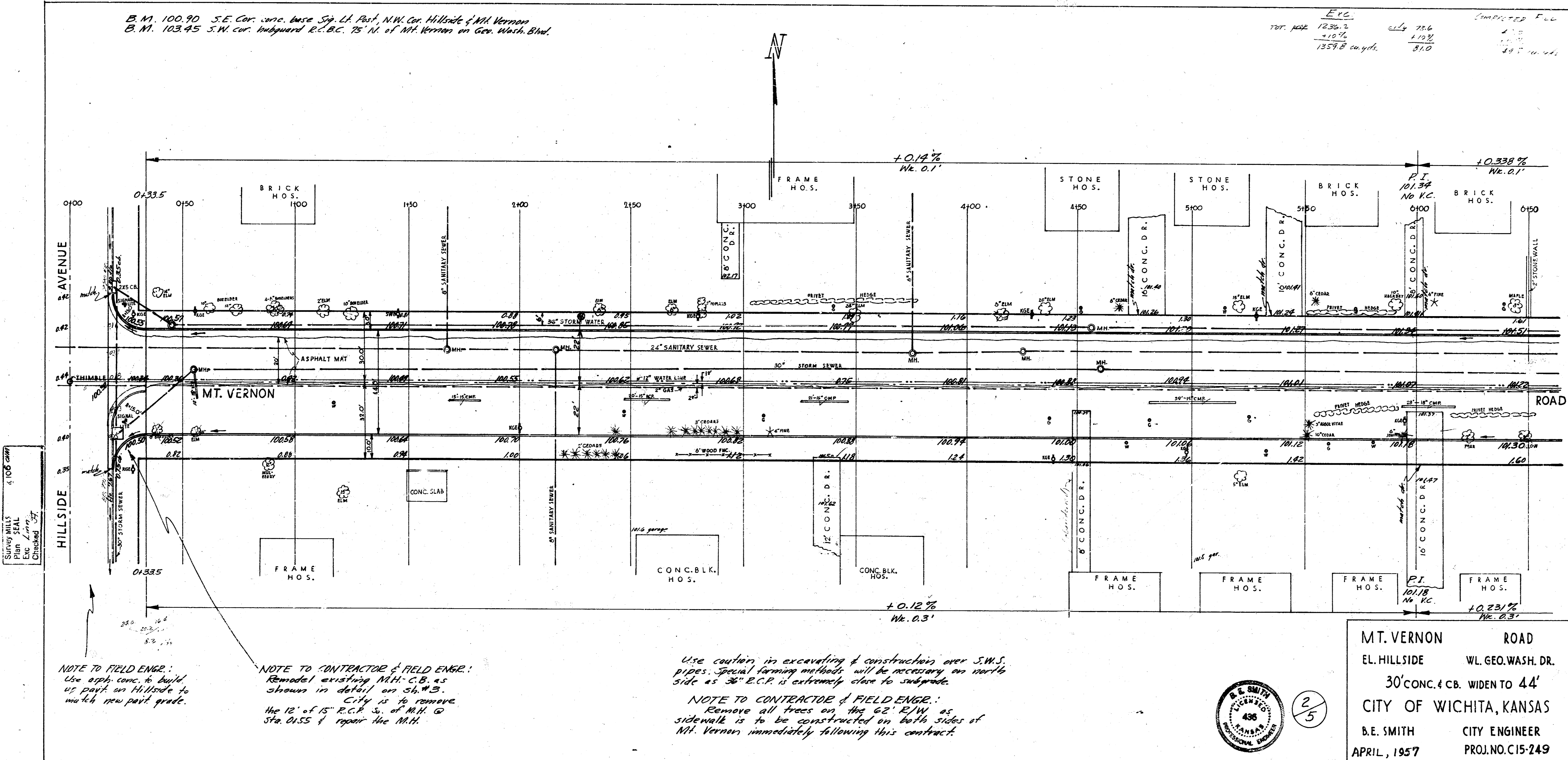


B.M. 100.90 S.E. Cor. vanc. base Stp. L.H. Post, N.W. Cor. Hillside & Mt. Vernon
 B.M. 103.45 S.W. cor.anguard R.C.B.C. 75' N. of Mt. Vernon on Geo. Wash. Blvd.

E.V.C.		COMPLETED FULL	
TOT. PIPE	1236.7	224	1.02
	210.7		
	1357.8 cu. yds.	31.0	49.5 min. wt.

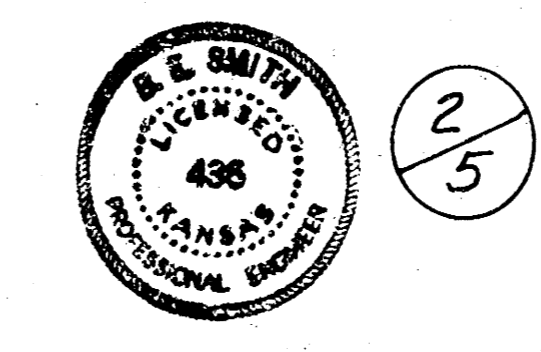


NOTE TO FIELD ENGR.:
 Use app. conc. to build up part on Hillside to match new part grade.

NOTE TO CONTRACTOR & FIELD ENGR.:
 Remodel existing Mt.-C.B. as shown in detail on sh. #3.
 City is to remove the 12' of 15" R.C.P. S. of M.H. @ Sta. 0+55 & repair the M.H.

Use caution in excavating & construction over S.M.S. pipes. Special forming methods will be necessary on north side as 36" R.C.P. is extremely close to subgrade.

NOTE TO CONTRACTOR & FIELD ENGR.:
 Remove all trees on the 62' E.W. as sidewalk is to be constructed on both sides of Mt. Vernon immediately following this contract.



2/5

MT. VERNON ROAD
 EL. HILLSIDE WL. GEO. WASH. DR.
 30' CONC. & CB. WIDEN TO 44'
 CITY OF WICHITA, KANSAS
 B.E. SMITH CITY ENGINEER
 APRIL, 1957 PROJ. NO. C15-249

