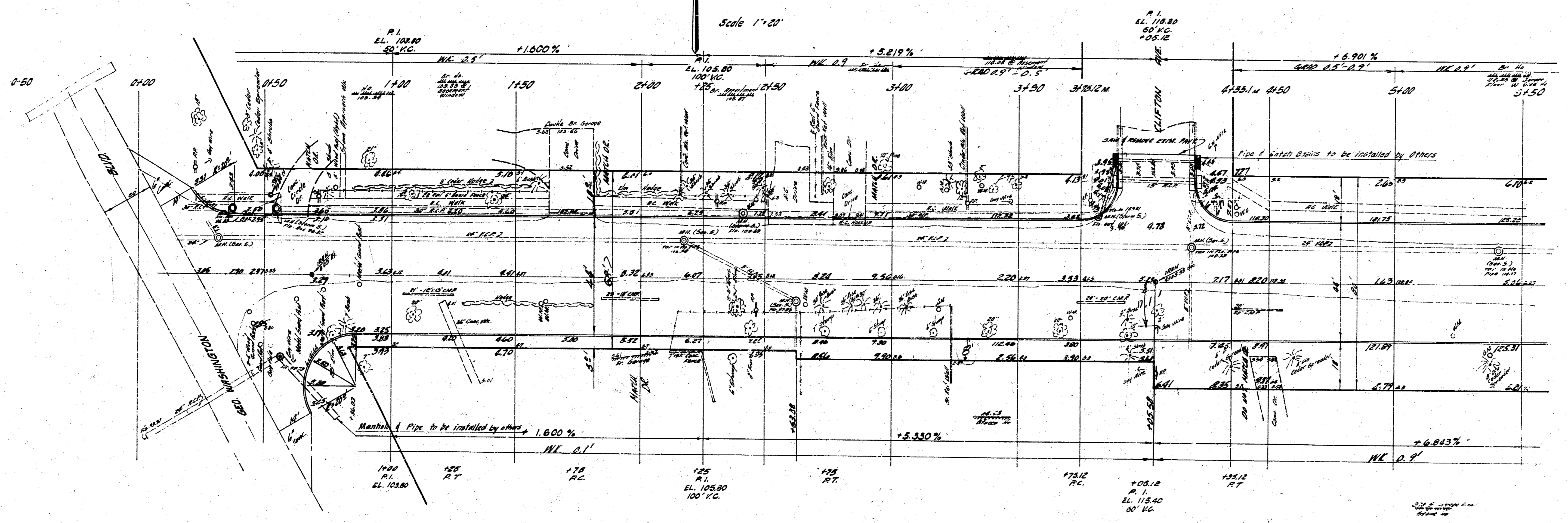


B.M. 123.475 X CUT SW COR. OF W. HIGHWAY CONC. BOX 75' N OF
 MT. VERNON ON GEO. WASHINGTON BLVD.
 B.M. 127.87 SW COR. BOTTOM CONC. STEP HD. # 3630 MT. VERNON
 B.M. 131.05 3" IN GLOBE CTR. WALK NO. W. SIDE ROOSEVELT 40' N. E. MT. VERNON
 B.M. 127.82 SE COR. CONC. STEP HD. # 3916 MT. VERNON



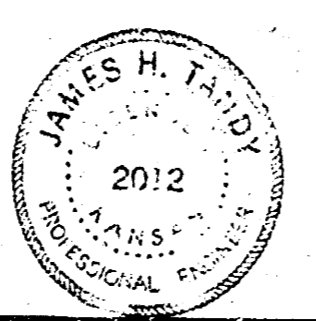
Scale 1"=20'



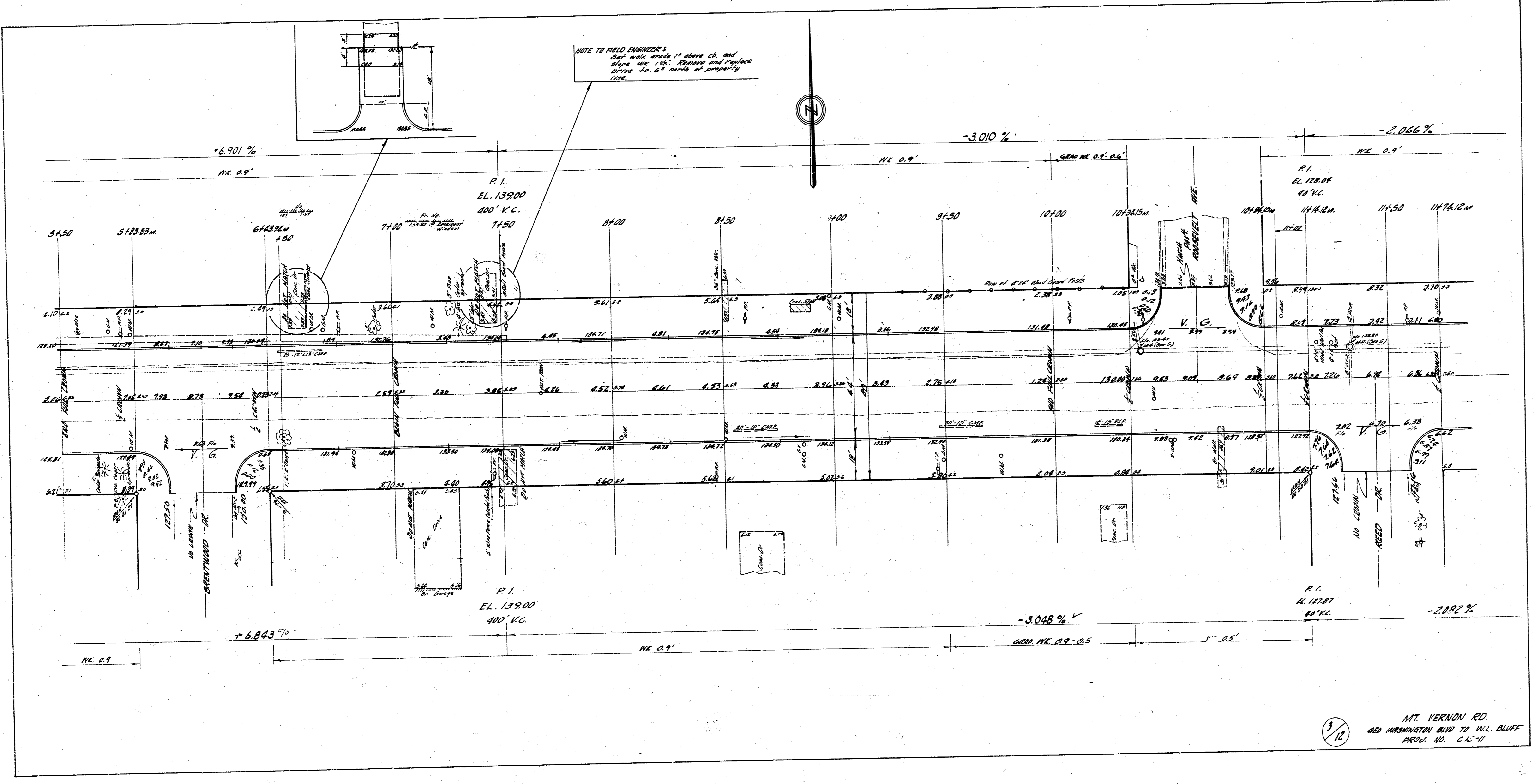
S. W. ZIMMERMAN, District Engr.
 Plan
 Checked
 2/11

LABOR QUANTITIES

Item	Property	City
Excav.	3808'	512'
Fill	380'	51'
Total	4188'	563'



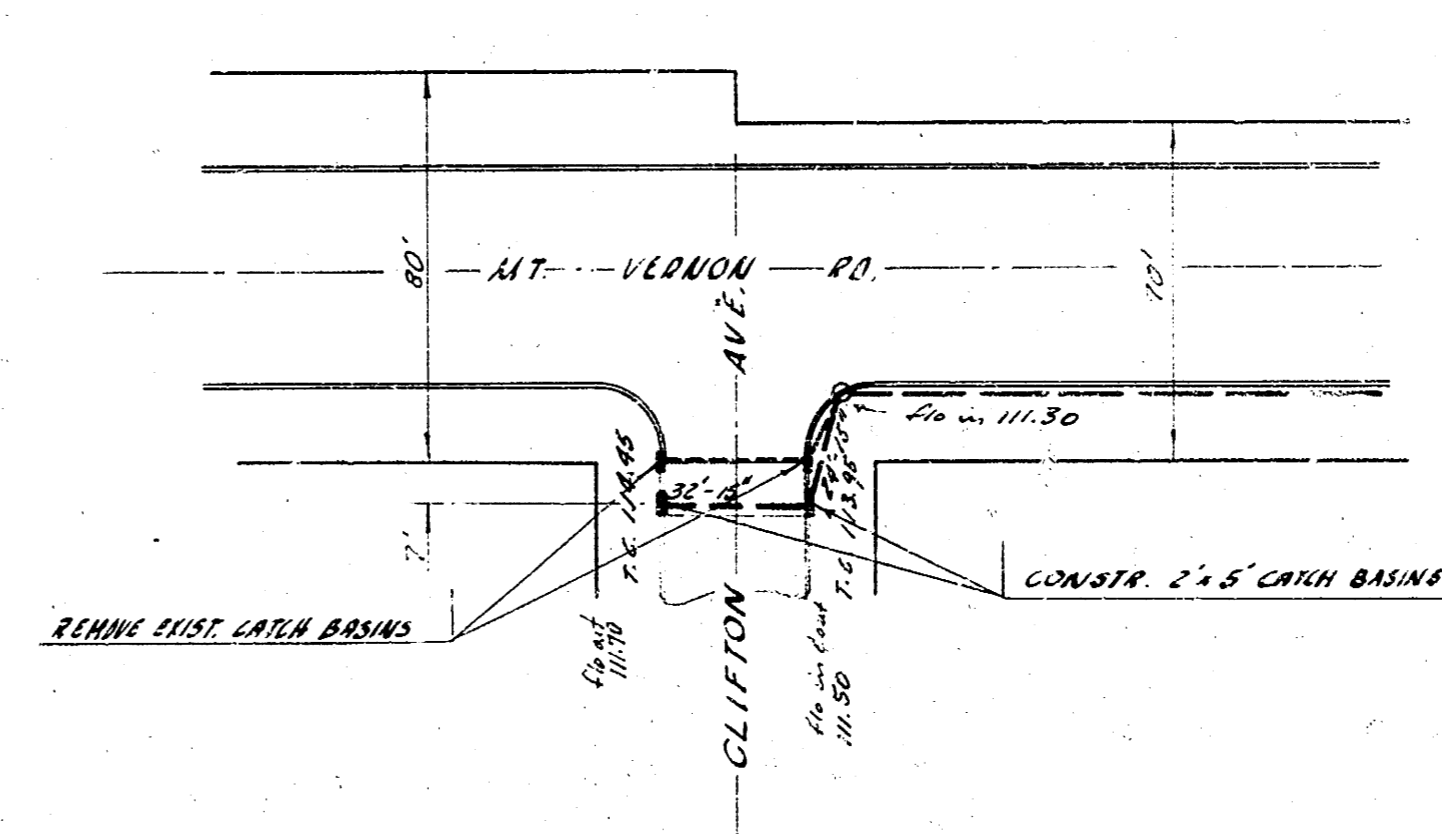
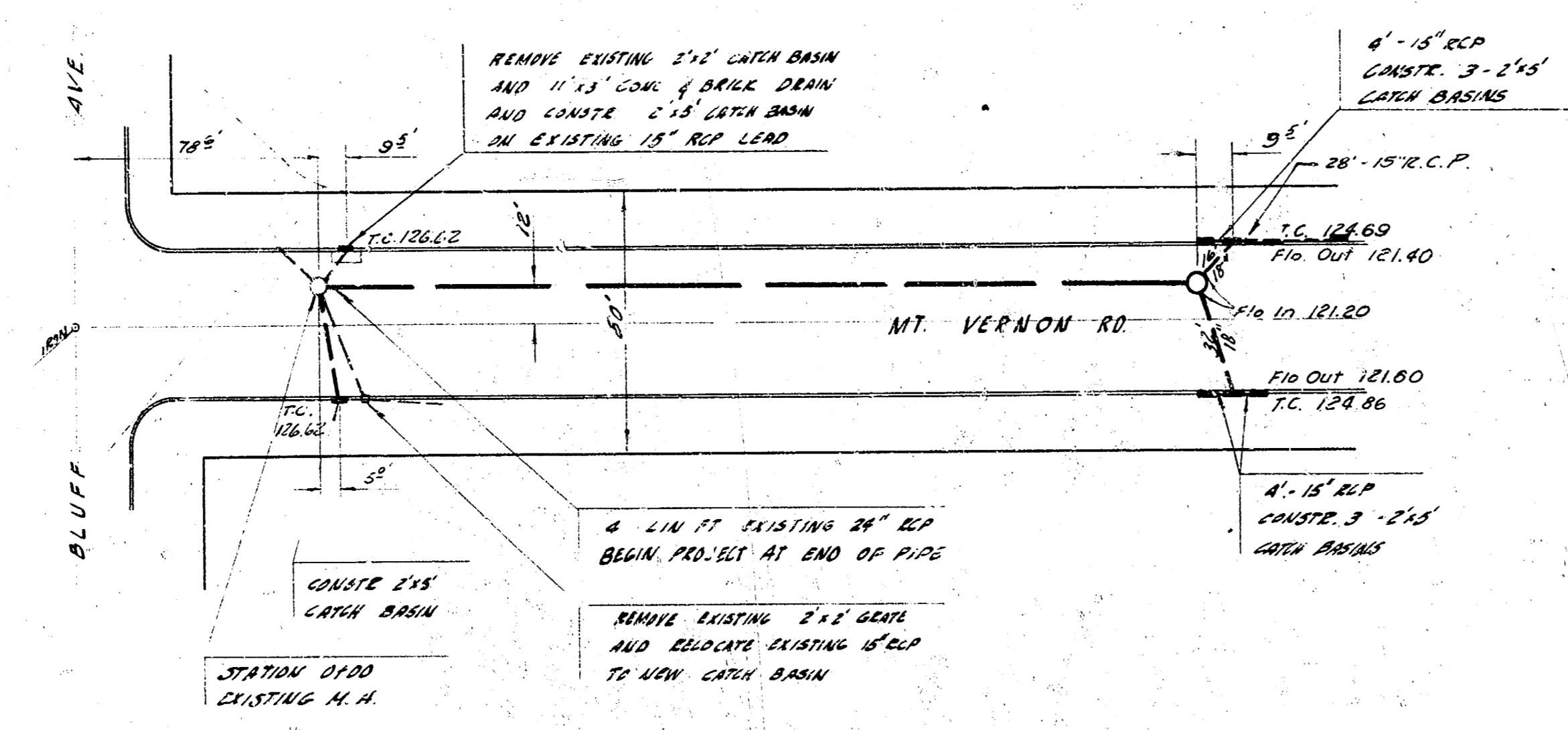
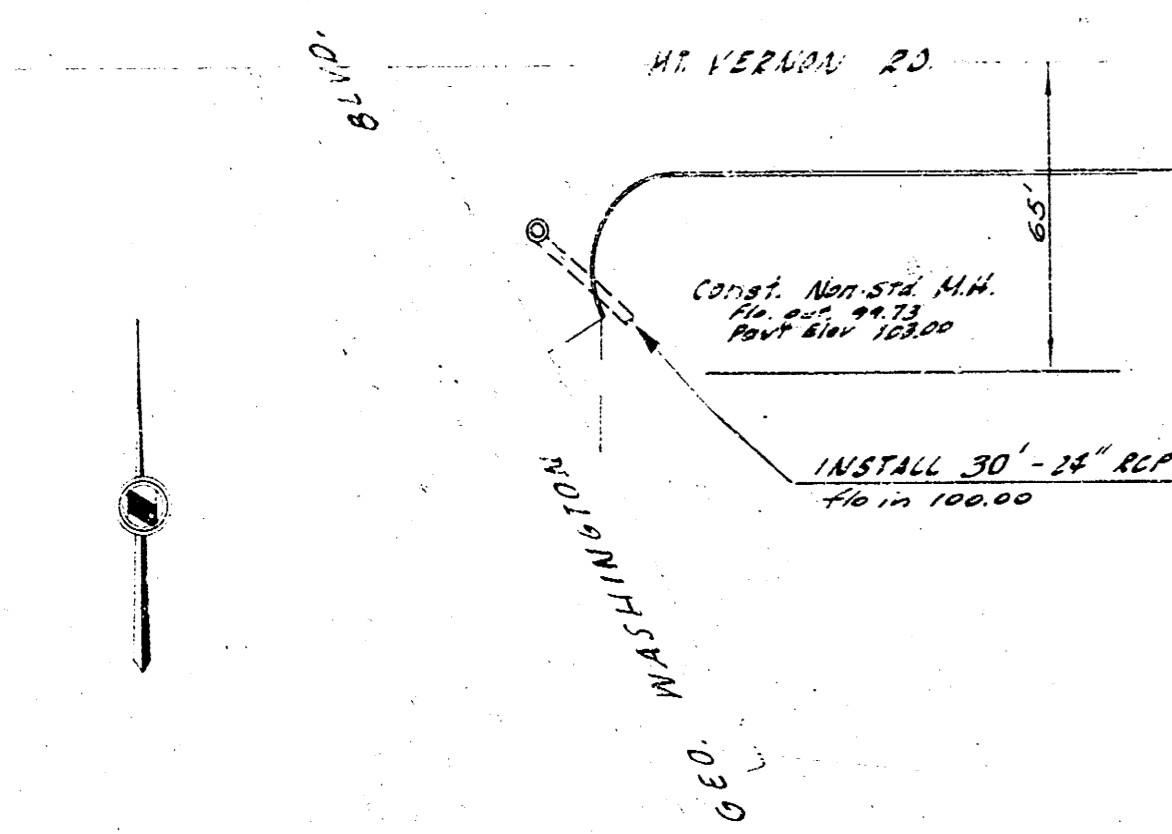
MT. VERNON RD.
 GEO. WASHINGTON BLVD TO R. D. 2-1/2
 44' CONC. & CB
 CITY OF WICHITA, KANSAS
 B. E. SMITH CITY ENGINEER
 DATE PROJ. NO. C-19-11



3/12
 MT. VERNON RD.
 2ND WASHINGTON BLVD TO HILL BLUFF
 PROJ. NO. C-15-11

SURVEY PLANS - Mt. Vernon
 PLAN 1 OF 2
 B.E. SMITH
 ENGINEER

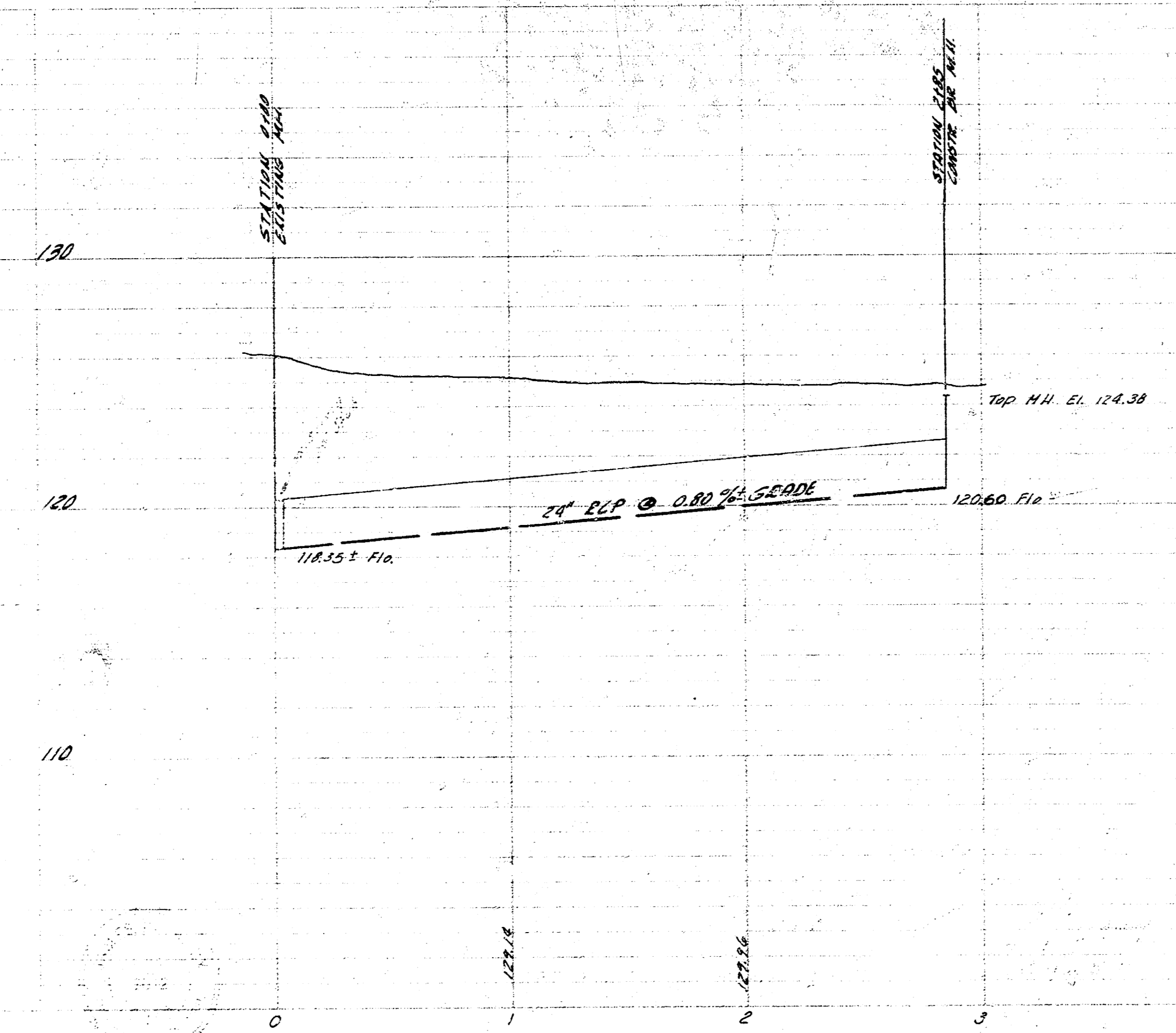
NOTE: Bid Price of sand fill is to include cost of flushing where sand fill is used. If excavated material is suitable for backfill, lineal ft of flushing will be paid.



NOTE: This project to be coordinated with paving project on Mt. Vernon. Catch basins to be located from paving plan.

B.M. 127.87 S.W. COR. BOTTOM CONC. STEP HD. # 3630 MT. VERNON
 B.M. 127.82 S.E. COR. CONC. STEP HD. # 3416 MT. VERNON

PLAN SCALE 1" = 40'
 PROFILE SCALE 1" = 40' HORIZ. 1" = 4' VERT.



DRAINAGE IN CONNECTION WITH
MT. VERNON AVE.
 600 WASHINGTON BLVD. - 17th BLUFF
 CITY OF WICHITA, KANS.
 B.E. SMITH CITY ENGINEER
 DATE: APRIL 10, 1911