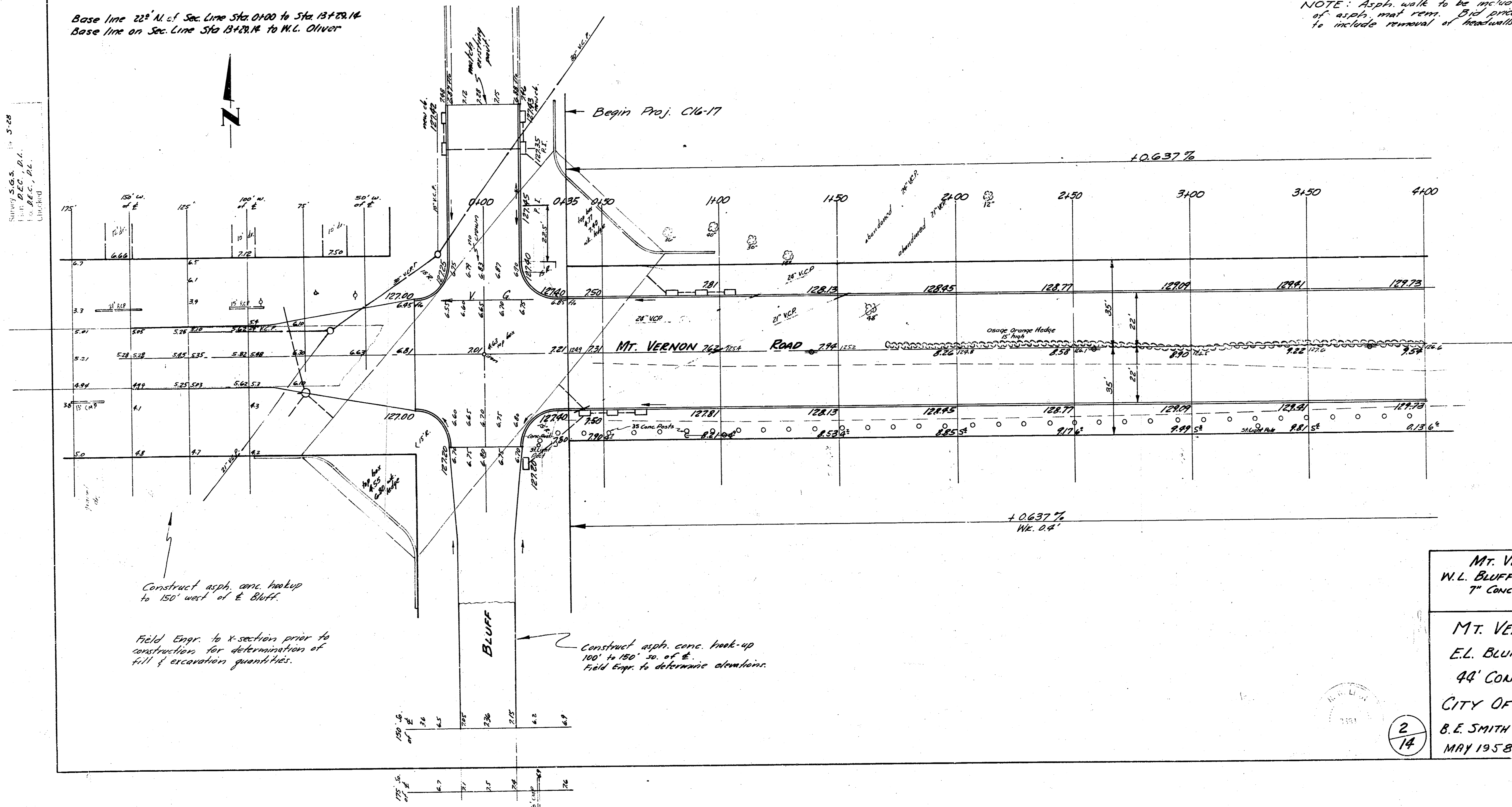
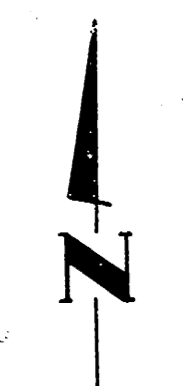


B.M. 12782 S.E. Cor. Conc. Step Ho. # 3916 Mt. Vernon

Base line 22° N. of Sec. Line Sta 0100 to Sta 1378.14
 Base line on Sec. Line Sta 1378.14 to M.L. Oliver

NOTE: Asph. walk to be included in sq. yds. of asph. mat. rem. Dist. price of pipe rem. to include removal of handwork on pipes.

Survey 5-5-53
 by DEC. D.L.
 Checked



Construct asph. conc. hook-up to 150' west of E. Bluff.

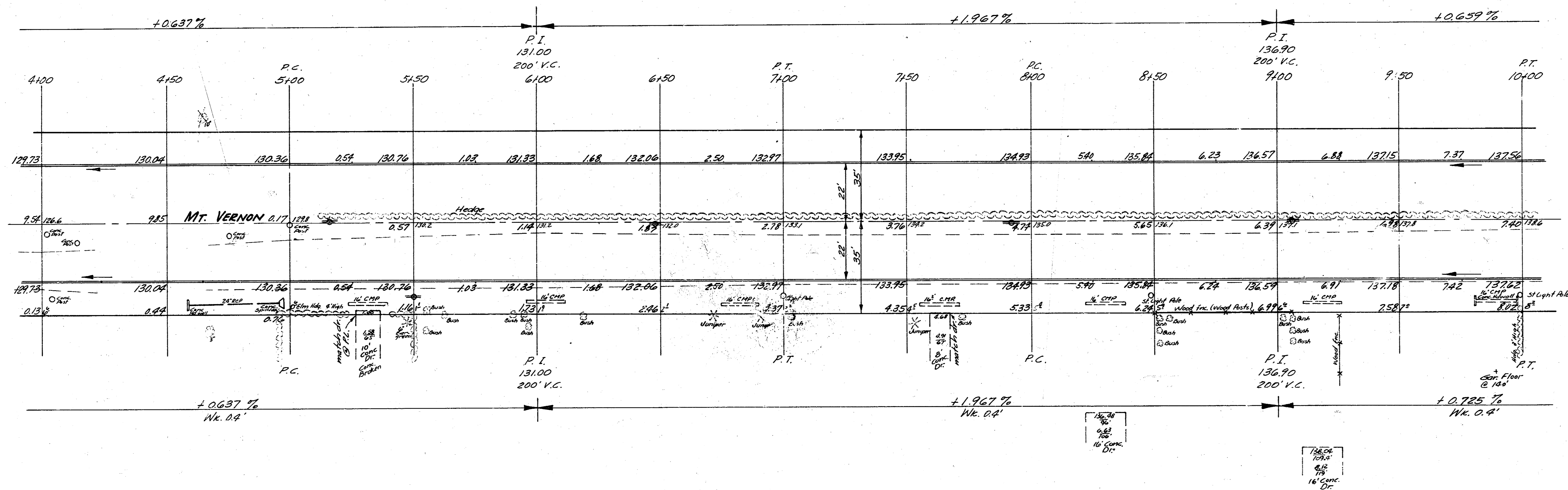
Field Engr. to X-section prior to construction for determination of fill & excavation quantities.

Construct asph. conc. hook-up 100' to 150' 30' of E. Bluff. Field engr. to determine dimensions.

MT. VERNON ROAD
 W.L. BLUFF TO E.L. BLUFF
 7" CONC. & CULVERT
 PROJ. No. C16-41

 MT. VERNON ROAD
 E.L. BLUFF TO W.L. OLIVER
 44' CONC. & CB - 7"
 CITY OF WICHITA, KANSAS
 B.E. SMITH CITY ENGINEER
 MAY 1958 PROJ. No. C16-17

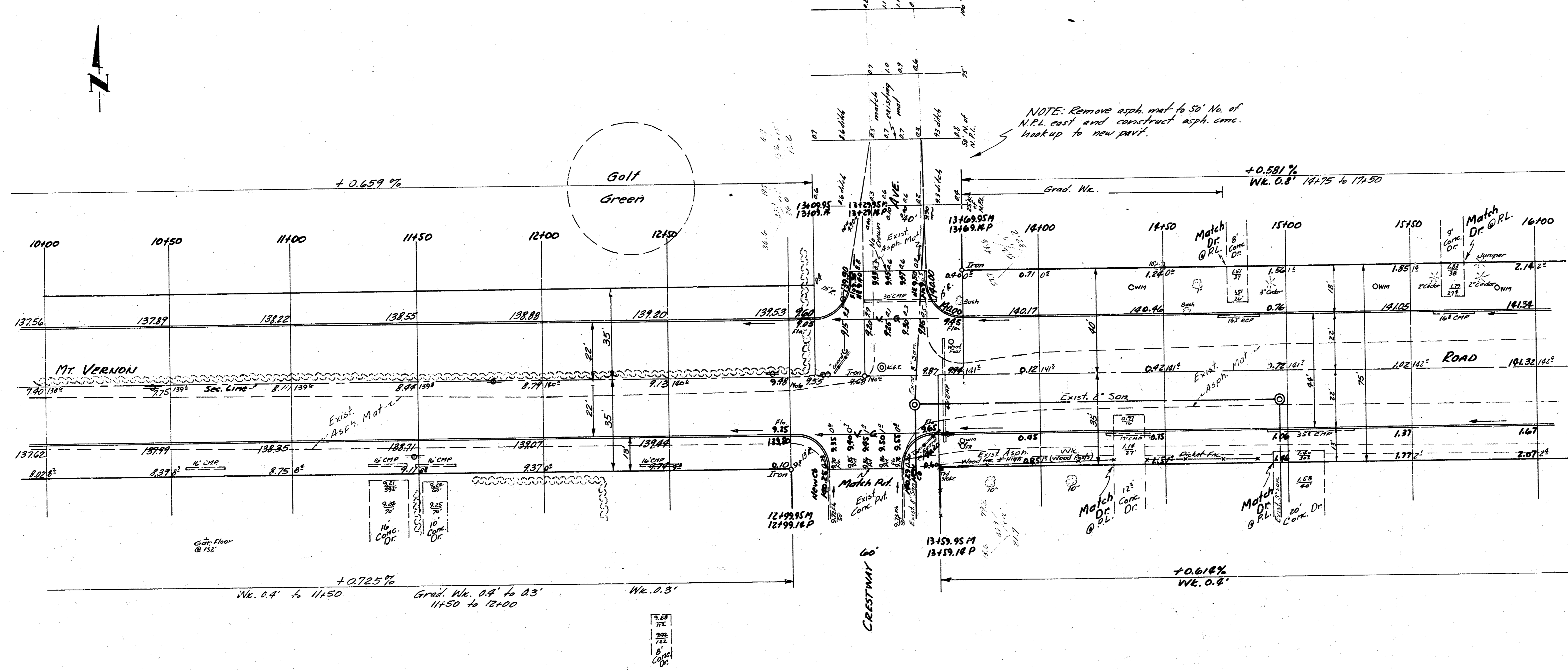
2/14



Mt. VERNON ROAD
PROJ. C16-17

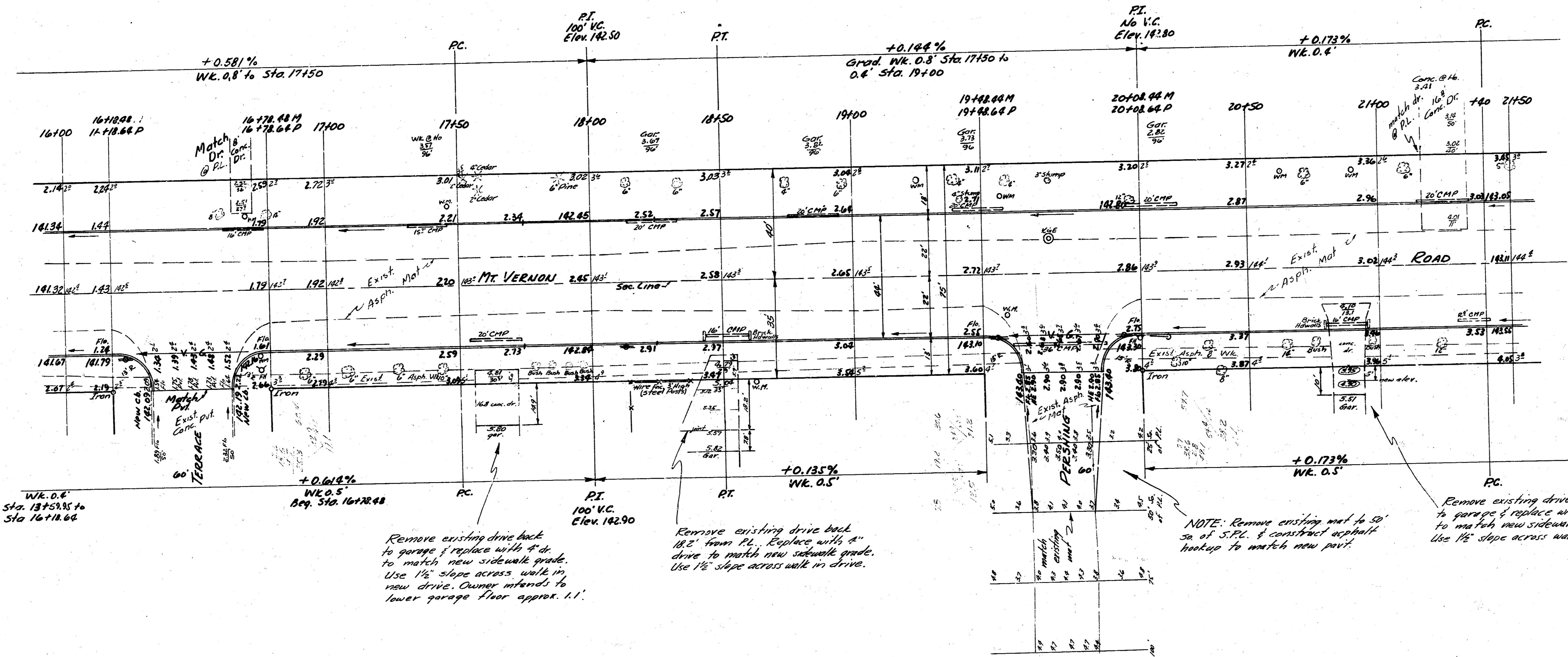
3
14

B.M. 143.23 "M" in Mueller Top Hyd. SE. Cor. Crestway & Mt. Vernon Road



MT. VERNON RD.
 PROJ. C16-17

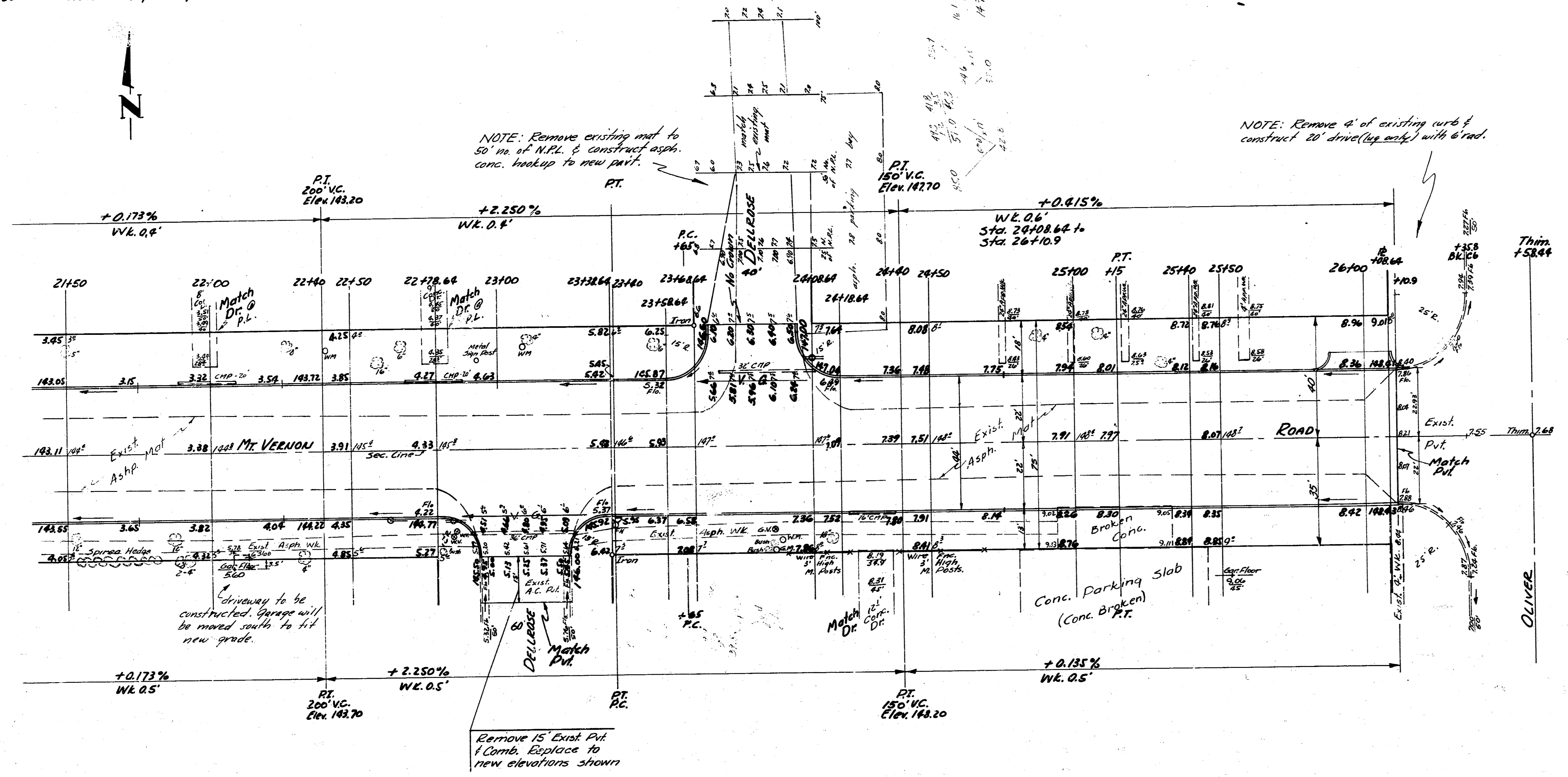
4
 14



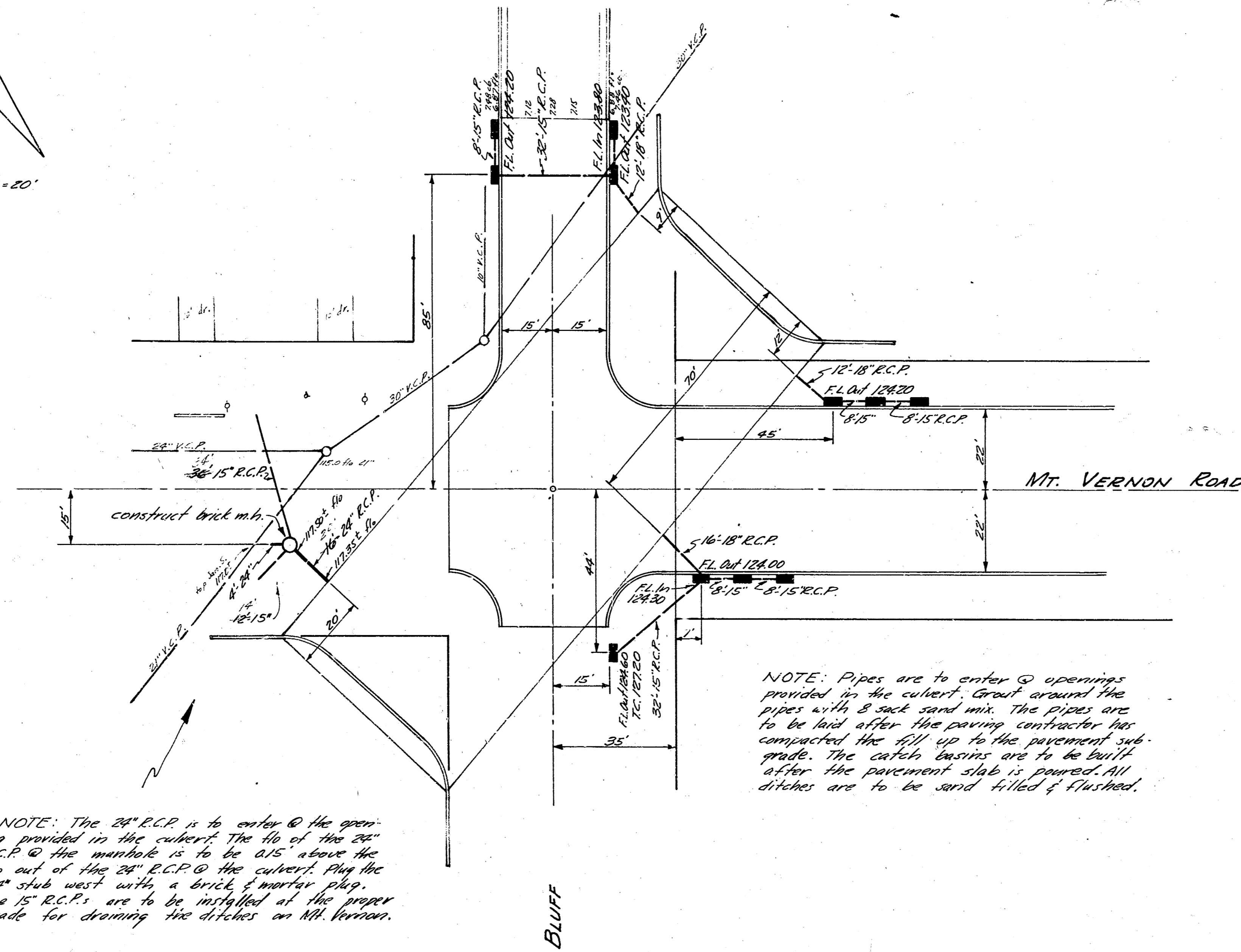
NOTE: Remove existing mat to 30' 30" of S.P.C. & construct asphalt hookup to match new part.

Remove existing drive back to garage & replace with 4' dr. to match new sidewalk grade. Use 1% slope across walk in drive.

B.M. 149.02 "M" in Mueller Top F. Hyd. S.E. Cor. Dellrose & Mt. Vernon Road

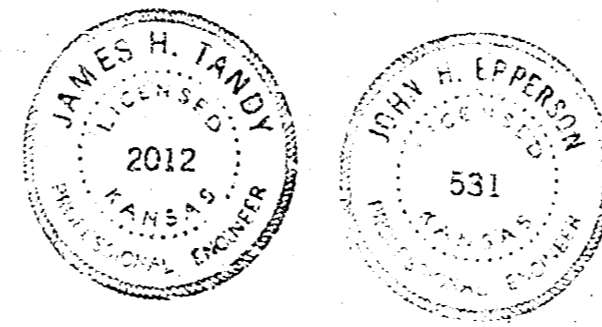


B.M. 127.82 S.E. Cor. Conc. Step No. #3916 Mt. Vernon



NOTE: The 24" R.C.P. is to enter @ the opening provided in the curb. The top of the 24" R.C.P. @ the manhole is to be 0.15' above the top of the 24" R.C.P. @ the curb. Plug the 24" stub west with a brick & mortar plug. The 15" R.C.P.'s are to be installed at the proper grade for draining the ditches on Mt. Vernon.

NOTE: Pipes are to enter @ openings provided in the curb. Grout around the pipes with 3 sack sand mix. The pipes are to be laid after the paving contractor has compacted the fill up to the pavement sub-grade. The catch basins are to be built after the pavement slab is poured. All ditches are to be sand filled & flushed.



INCIDENTAL DRAINAGE
MT. VERNON ROAD
E.L. BLUFF TO W.L. OLIVER
CITY OF WICHITA, KANSAS
B.E. SMITH - CITY ENGINEER
MAY 1958 Proj. No. C16-17