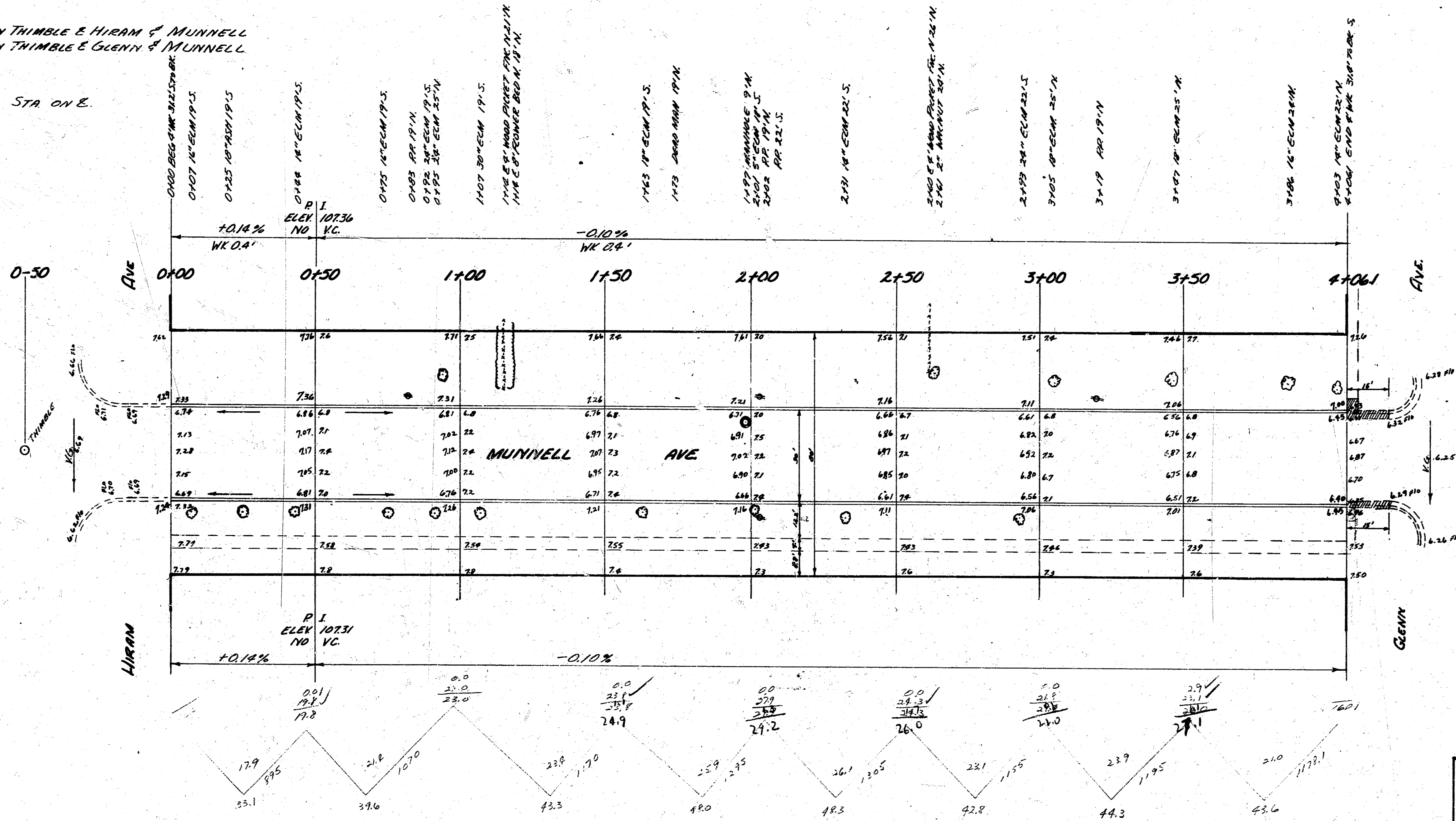
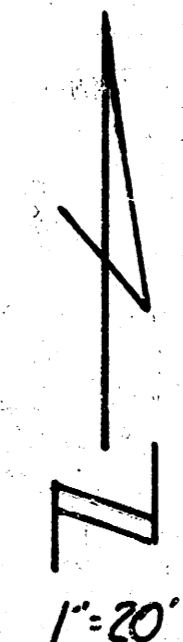


BM 10709 IRON IN THIMBLE & HIRAM & MUNNELL
 BM 10651 IRON IN THIMBLE & GLENN & MUNNELL



Prop
 343.0
 +10.22 343.7
 377.3

1/4" = 10' 0"



MUNNELL AVE.
 EL. HIRAM TO W.L. GLENN
 30' CONC + C.B.

CITY OF WICHITA, KANSAS
 B.E. SMITH CITY ENGINEER
 JAN. 23, 1953 PROJ. No. C12-227

