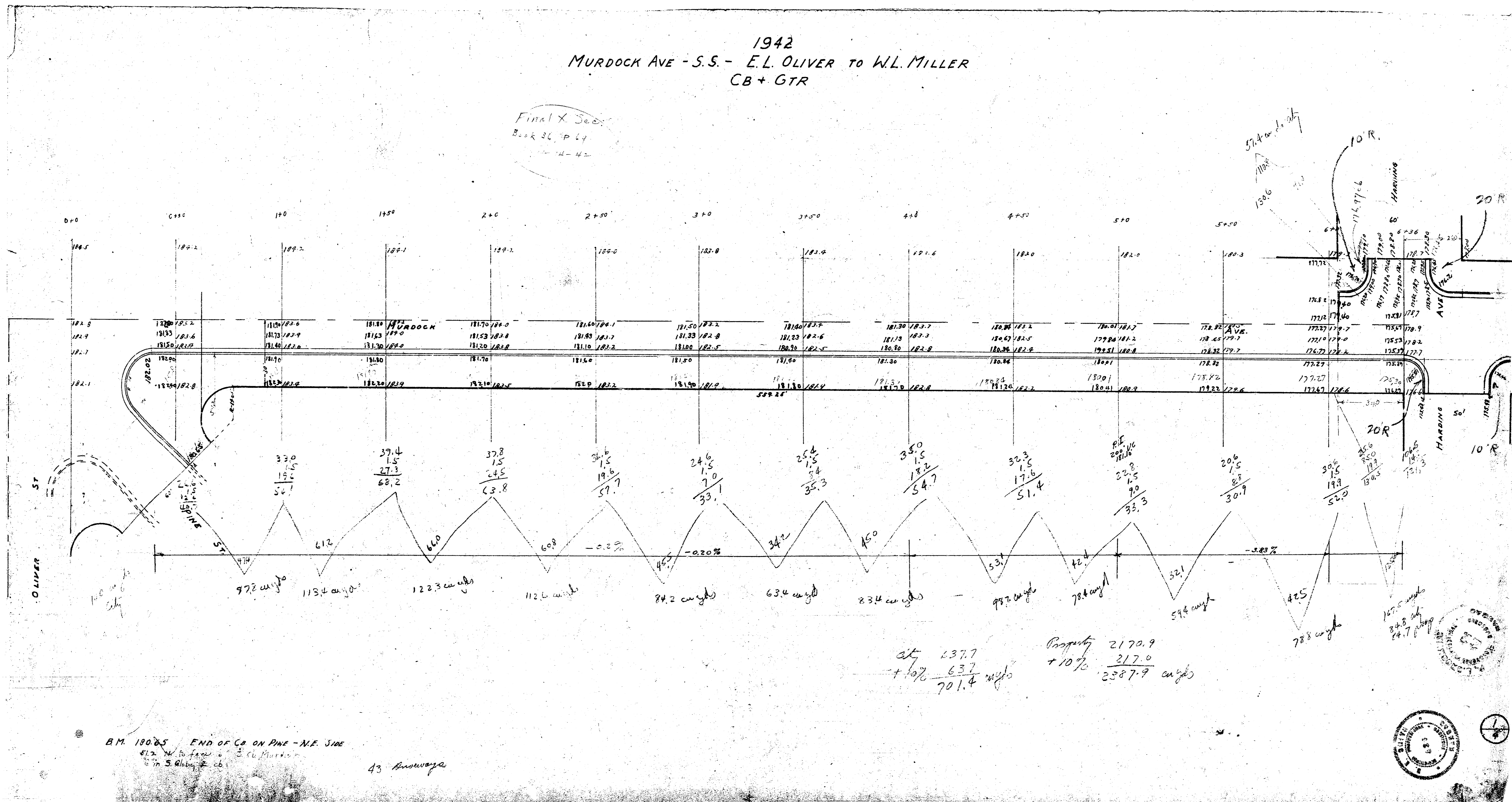
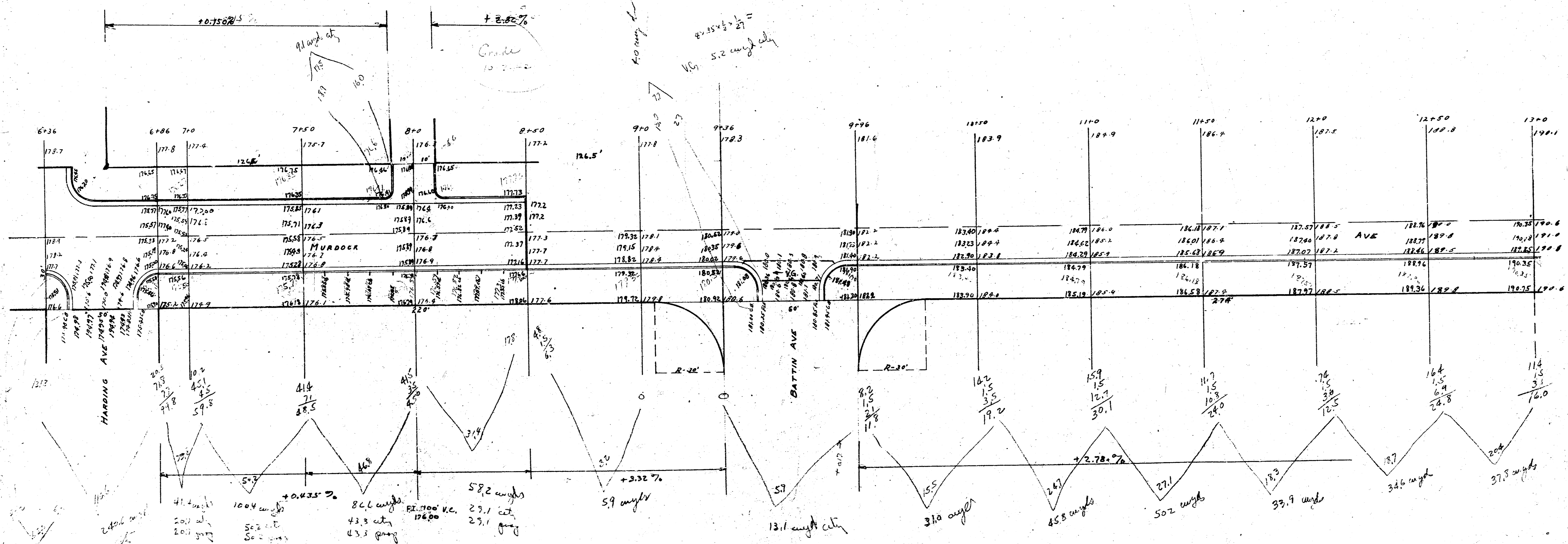


Build 6" concrete pavement and curb and gutter on both sides of street from Sta 6+03 to Sta 8+50. Surface of pavement will be on warped flat plane to take drainage across Murdoch. P215

1942  
 MURDOCK AVE - S.S. - E.L. OLIVER TO W.L. MILLER  
 CB + GTR

Final X Section  
 Book 36, P. 49  
 4-42





Build 6" concrete pavement and curb and gutter  
 in both directions of travel from Sta 6+03 to Sta 8+50  
 surface of pavement will be on warped flat  
 plane to the drainage across Murdock.  
 P.D.



