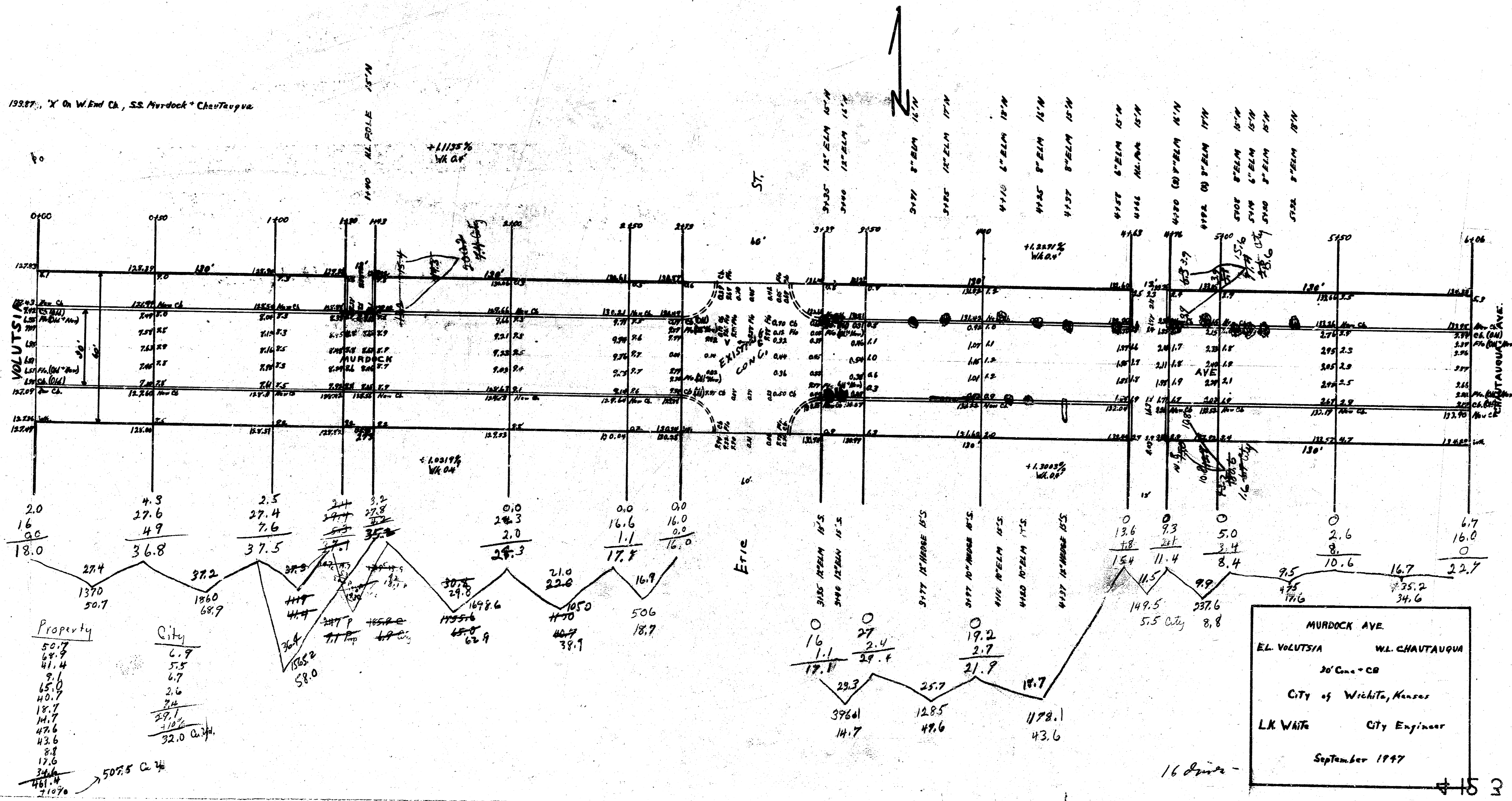


B.M. 13287, "X" On W. End Ch., S.S. Murdock - Chautauque



Property	City
50.7	6.9
68.9	5.5
41.4	6.7
3.1	2.6
65.0	3.4
40.7	29.1
18.7	10.2
14.7	32.0
42.6	
43.6	
8.8	
17.6	
34.4	
441.4	
210.9	

MURDOCK AVE.
 EL. VOLUTSIA WL. CHAUTAUQUE
 30' Con. - CB
 City of Wichita, Kansas
 L.K. WAITE City Engineer
 September 1947