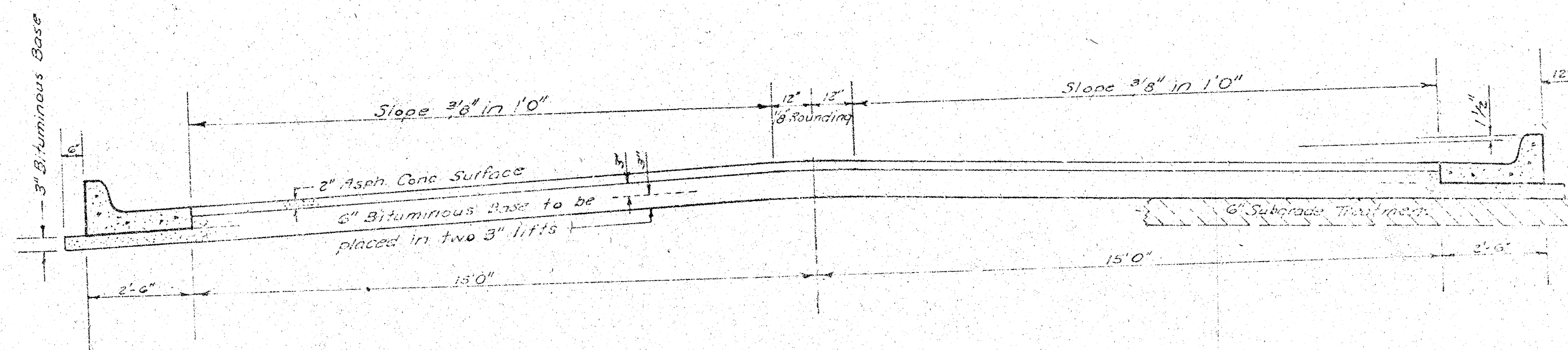


RUTGERS STREET
N.L. PARKDALE To S.L. 17TH STREET.
PROJ No. 472-76-245-80511-000-000-001



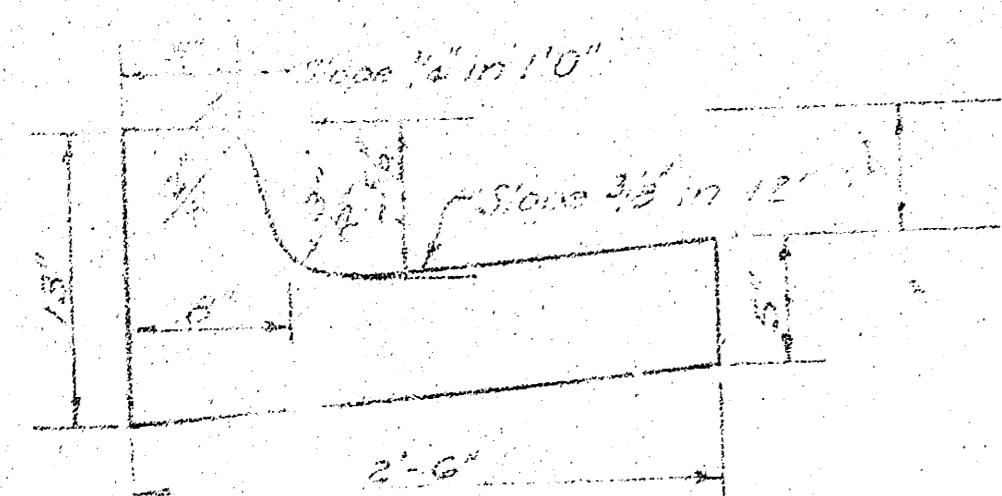
TYPICAL SECTION

35' ASPHALTIC CONCRETE PAVEMENT WITH BITUMINOUS BASE

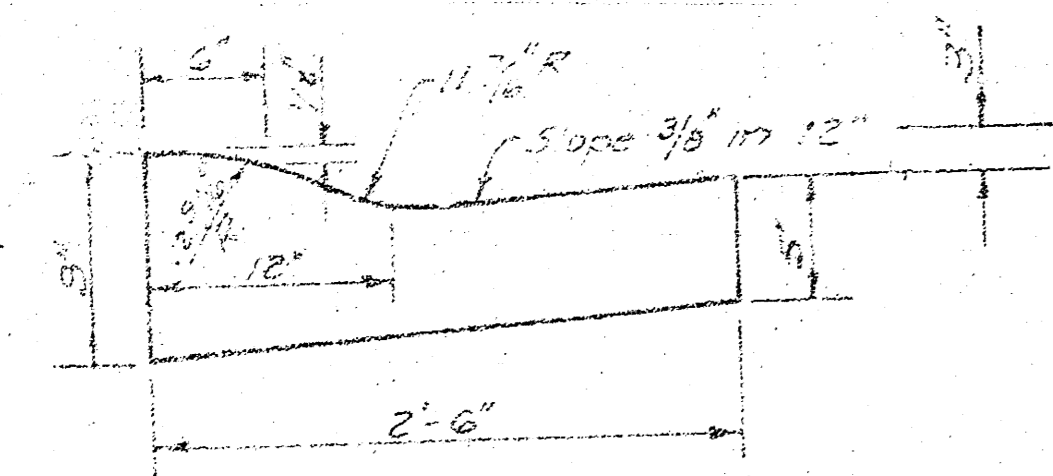
A TACK COAT OF EMULSIFIED ASPHALT (SS-1H) SHALL BE APPLIED AT AN APPROXIMATE RATE 0.05 GALLONS PER SQ YD BETWEEN LIFTS OF ASPHALTIC MATERIALS WHEN ORDERED BY THE ENGINEER. TACK COAT WILL NOT BE PAID FOR DIRECTLY AND SHALL BE CONSIDERED AS SUBSIDIARY TO PRICE BID FOR ASPHALTIC PAVEMENT. BITUMINOUS BASE AND ASPHALTIC CONCRETE WEARING SURFACE SHALL BE PLACED WITH A LAYDOWN MACHINE HAVING AUTOMATIC ELECTRONIC CONTROLS FOR CROWN AND GRADE. CONSTRUCTION JOINTS IN EACH LIFT SHALL BE STAGGERED A MINIMUM DISTANCE OF 1' WITH JOINTS IN PRECEDING LIFTS AND PLACED SUCH THAT A JOINT WILL BE CONSTRUCTED ON THE CENTERLINE IN THE TOP LIFT.

The P.C. movement between the curb curb & gutter shall be paid as Sq.Yds. 8" A.C. Pavement (6" Bituminous Base). The Bituminous Base under the curb curb & gutter shall be paid as Sq.Yds. 3" Bituminous Base.

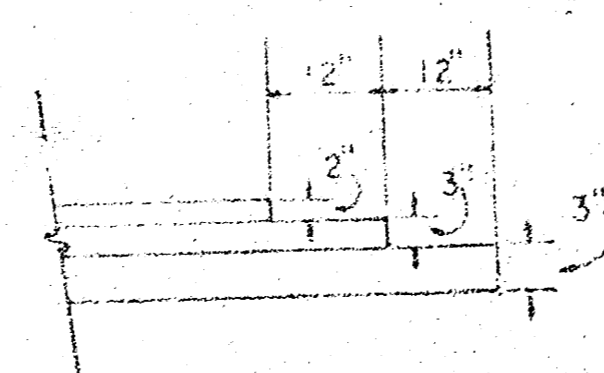
CONTINUED CURB & GUTTER



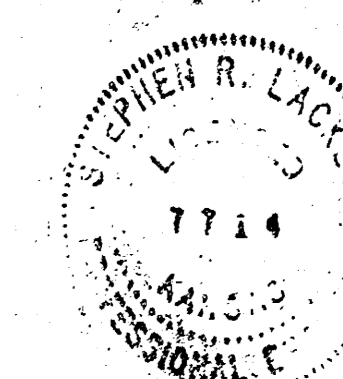
ROLL TYPE CURB & GUTTER



DETAIL OF TRANSVERSE CONSTRUCTION JOINTS



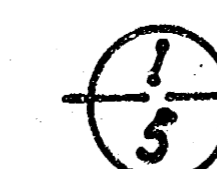
TRANSVERSE CONSTRUCTION JOINTS SHALL BE CONSTRUCTED IN FLEXIBLE BASE PAVEMENTS AT LOCATIONS WHERE PAVEMENT TEMPORARILY ENDS TO FACILITATE FUTURE PAVEMENT CONSTRUCTION AS SHOWN BY DETAIL. THE COST OF CONSTRUCTING THE TRANSVERSE CONSTRUCTION JOINTS SHALL NOT BE MEASURED OR PAID FOR DIRECTLY BUT SHALL BE INCLUDED IN THE B'D PRICE FOR SQUARE YARDS OF ASPHALTIC CONCRETE PAVEMENT.



CITY OF WICHITA KANSAS

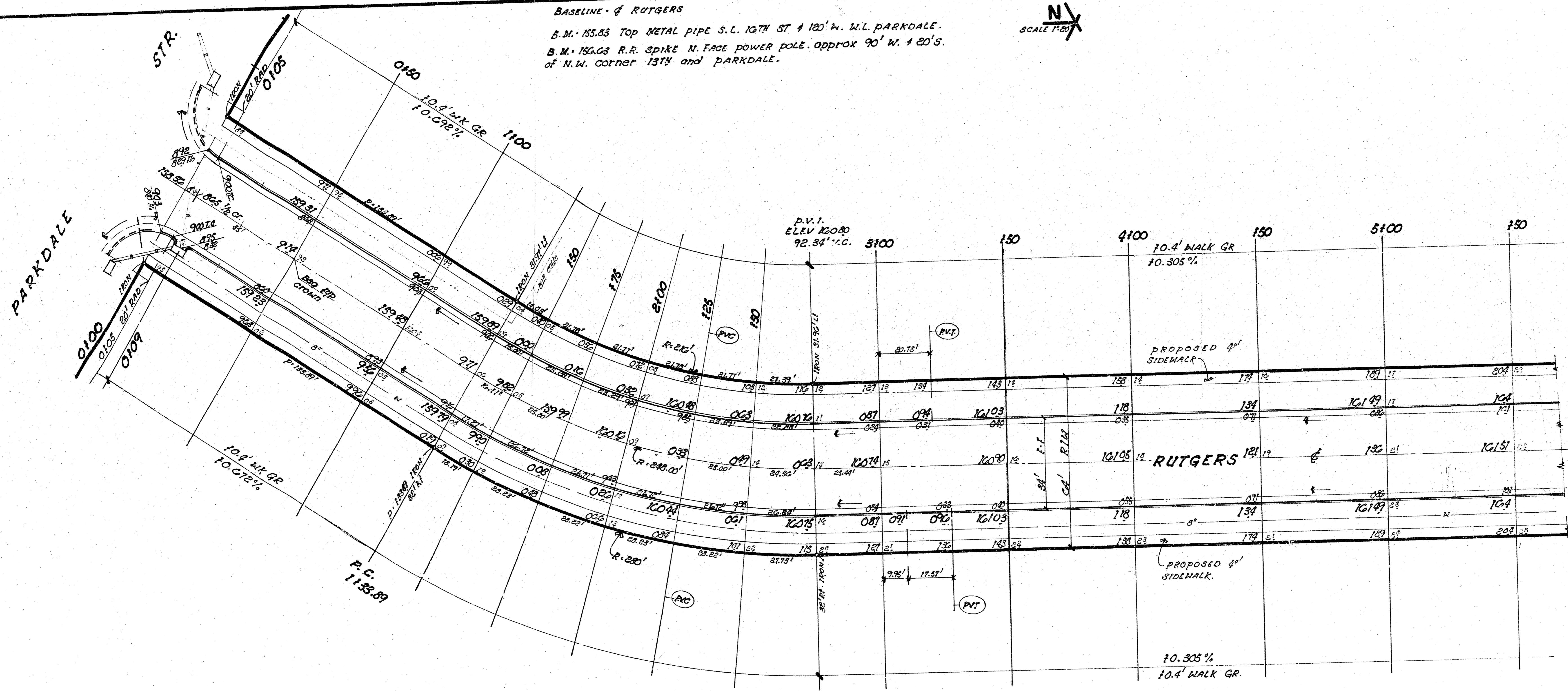
DEPARTMENT of PUBLIC WORKS - Engineering Division.

R.W. LINN CITY ENGINEER
 DATE _____ Proj No. _____



1/3

FILMED FROM THE BEST AVAILABLE COPY.....



CURVE DATA BASED ON $\frac{1}{2}$ RADIUS 248.00' $\Delta = 32^\circ 30'$
 OG. 93094 MIN/H ARC TAN = 12.29'

STATION	ARC	CHORD S.O.S. R. W. CURB	CHORD S.O.S. R. E. CURB	DEFL.	TOTAL DEFLECTION
PG. 1133.09					0° 00' 00"
130	12.11'	14.44'	17.73'	1° 51' 39"	1° 51' 39"
175	28.00'	22.47'	27.51'	2° 53' 17"	4° 44' 56"
210				7° 39' 15"	12° 24' 11"
225				10° 31' 30"	22° 55' 41"
230	25.00'	22.47'	27.51'	2° 53' 17"	15° 24' 47"
RT. 2174.32	24.36'	22.01'	27.00'	2° 50' 13"	18° 15' 00"

SUB-GRADE
 TYPE OF SUB-GRADE TREATMENT SHALL BE DETERMINED BY THE SUB-GRADE TREATMENT MANUFACTURER'S RECOMMENDATION, CEMENT TREATMENT, SUB-GRADE MODIFICATION, OR ANY COMBINATION OF THESE.

NOTE TO FIELD ENGINEER & CONTRACTOR
 Grade parking and clear right-of-way for proposed sidewalk. Compact fill in sidewalk area. TO BE CONSTRUCTED BY "OTHERS".

PROPERTY EXCAVATION
 2300.8 CU YDS
 2330.1 CU YDS
2330.9 CU YDS

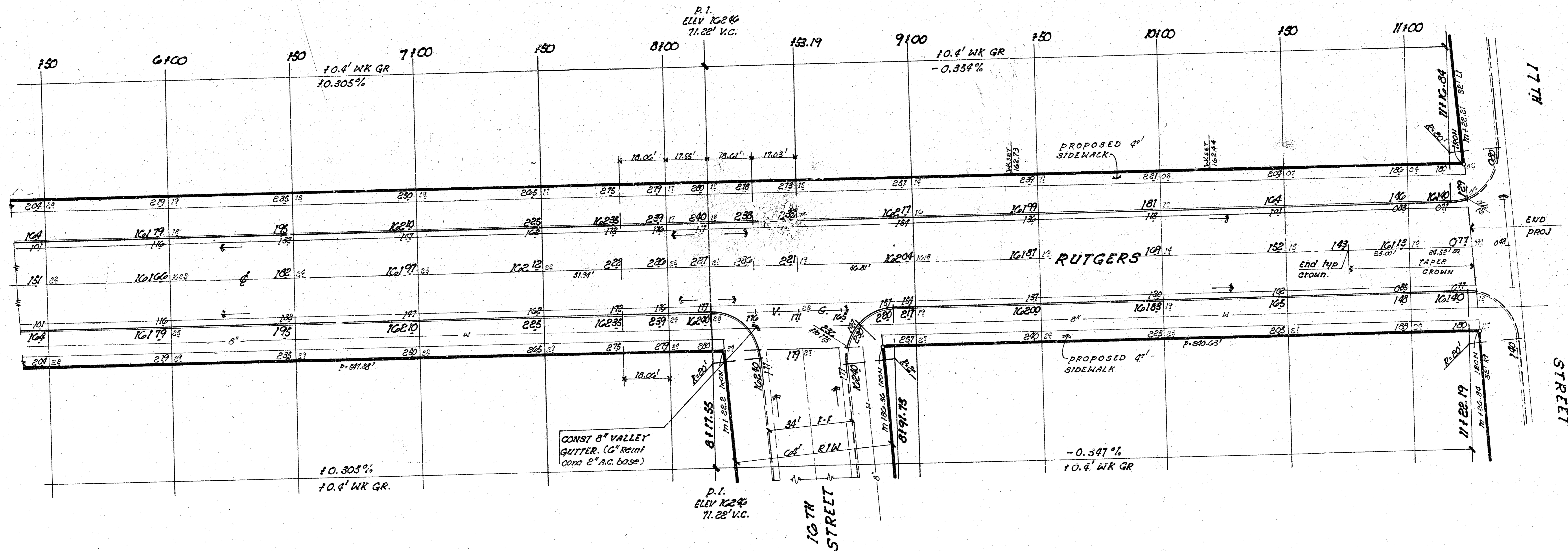
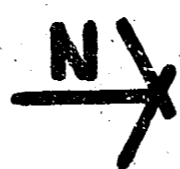
CITY EXCAVATION
 71.6 CU YDS
 110% 7.2
78.8 CU YDS

2330.9 CU YDS MANIPULATION

2/5

"RUTGERS"
 N.L. PARKDALE TO S.L. 17TH STREET.
 CITY OF WICHITA, KANSAS
 (31" FF) 2" ASPH CONC WEARING SURFACE, 6" BITUMINOUS BASE 4" COMB CURB & GUTTER
 R.M. LINN CITY ENGINEER
 DATE: _____
 PROJ. No. 472-16-245-80511000-000-001 2/3

FILMED FROM THE BEST AVAILABLE COPY.....



FILMED FROM THE BEST AVAILABLE COPY