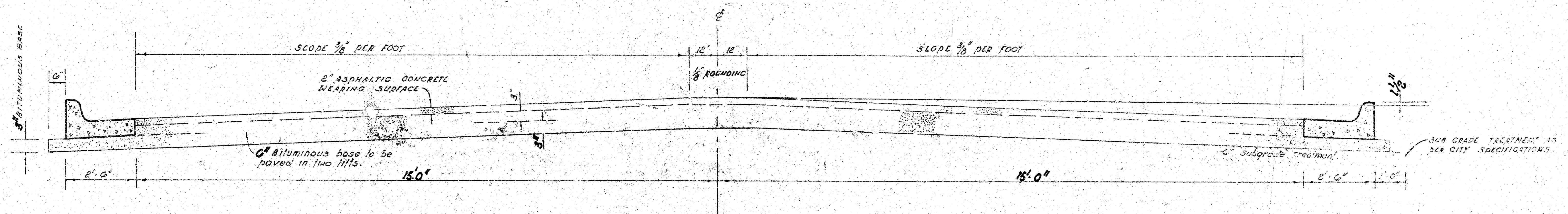


RUTGERS STREET
N.L. 14TH STREET TO S.L. PARKDALE STREET
PROJ No. 472-76-245-80509000-000-001



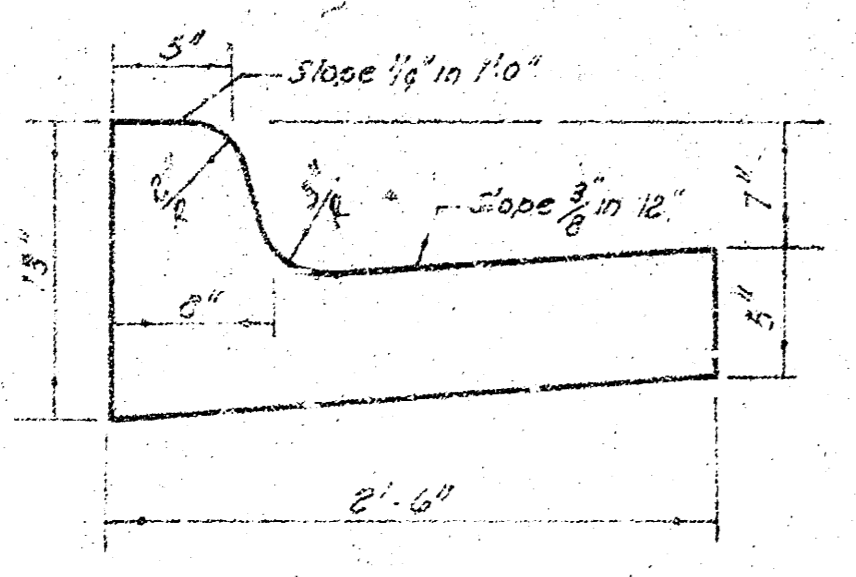
TYPICAL SECTION

35' ASPHALTIC CONCRETE PAVEMENT WITH BITUMINOUS BASE

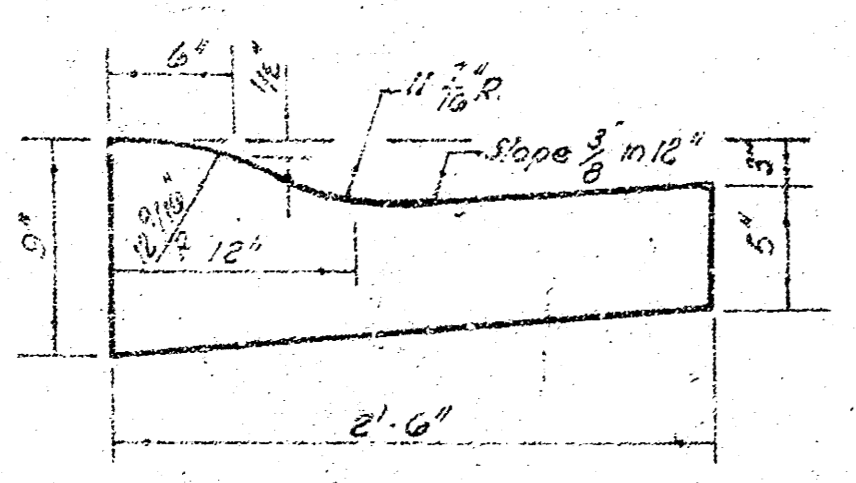
A TACK COAT OF EMULSIFIED ASPHALT (SS-1H) SHALL BE APPLIED AT AN APPROXIMATE RATE 0.05 GALLONS PER SQ YD BETWEEN LIFTS OF ASPHALTIC MATERIALS WHEN ORDERED BY THE ENGINEER. TACK COAT WILL NOT BE PAID FOR DIRECTLY AND SHALL BE CONSIDERED AS SUBSIDIARY TO PRICE BID FOR ASPHALTIC PAVEMENT. BITUMINOUS BASE AND ASPHALTIC CONCRETE WEARING SURFACE SHALL BE PLACED WITH A LAYDOWN MACHINE HAVING AUTOMATIC ELECTRONIC CONTROLS FOR BROWN AND GRADE. CONSTRUCTION JOINTS IN EACH LIFT SHALL BE STAGGERED A MINIMUM DISTANCE OF 1' WITH JOINTS IN PRECEDING LIFTS AND SUCH THAT A JOINT WILL BE CONSTRUCTED ON THE PAVEMENT CENTERLINE IN THE TOP LIFT.

The A.C. pavement between the curb, curb & gutter shall be paid as 30 yds 8" A.C. pavement (3" Bituminous Base). The Bituminous Base under the curb & gutter shall be paid as 50 yds 3" Bituminous Base.

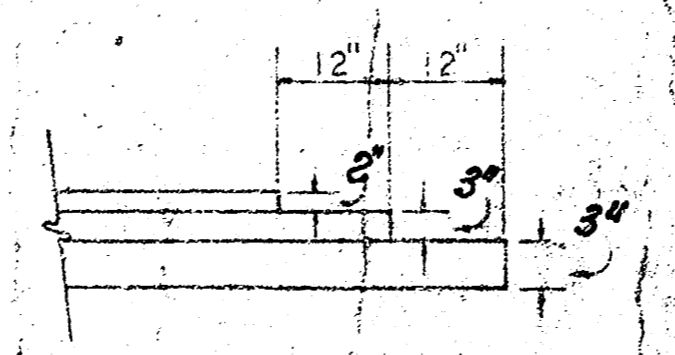
COMBINED CURB & GUTTER



ROLL TYPE CURB & GUTTER



DETAIL OF TRANSVERSE CONSTRUCTION JOINTS



TRANSVERSE CONSTRUCTION JOINTS SHALL BE CONSTRUCTED IN FLEXIBLE BASE PAVEMENTS AT LOCATIONS WHERE PAVEMENT TEMPORARILY ENDS TO FACILITATE FUTURE PAVEMENT CONSTRUCTION AS SHOWN BY DETAIL. THE COST OF CONSTRUCTING THE TRANSVERSE CONSTRUCTION JOINTS SHALL NOT BE MEASURED OR PAID FOR DIRECTLY BUT SHALL BE INCLUDED IN THE BID PRICE FOR SQUARE YARDS OF ASPHALTIC CONCRETE PAVEMENT.

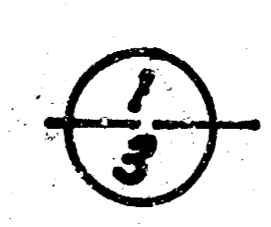


CITY OF WICHITA, KANSAS

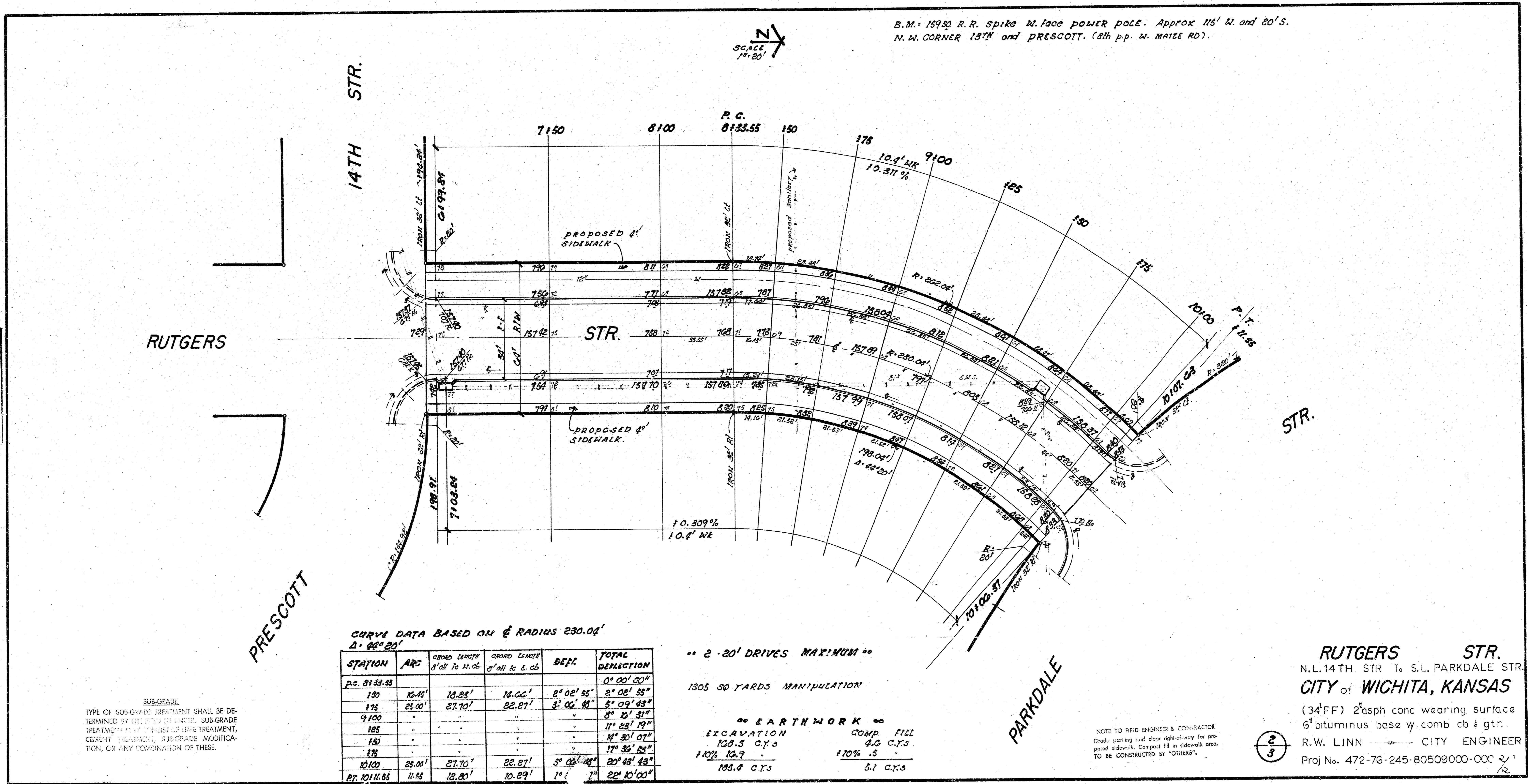
DEPARTMENT of PUBLIC WORKS - Engineering Division.

R. W. LINN CITY ENGINEER

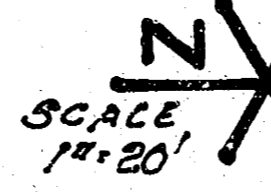
DATE _____ Proj. No. 1/2



SURVY ARKOP
 Plan & E. E. Jr.
 Exc
 Checked



B.M. 15930 R.R. Spike W. face POWER POLE. Approx 116' W. and 20' S.
 N.W. CORNER 137th and PRESCOTT. (8th p.p. W. MAIZE RD).



CURVE DATA BASED ON Δ RADIUS 230.04'

STATION	ARC	CHORD LENGTH 8' all to 24.06'	CHORD LENGTH 8' all to 16.06'	DEFL	TOTAL DEFLECTION
P.C. 8133.55					0° 00' 00"
180	10.44'	10.23'	14.06'	2° 02' 55"	2° 02' 55"
175	25.00'	27.70'	22.27'	3° 06' 48"	5° 09' 43"
9100					8° 12' 31"
185					11° 23' 19"
180					14° 30' 07"
175					17° 36' 54"
10100	25.00'	27.70'	22.27'	3° 06' 48"	20° 43' 43"
P.T. 10111.55	11.55'	12.80'	10.29'	1° 00' 00"	22° 10' 00"

20' DRIVES MAXIMUM

1305 SQ YARDS MANIPULATION

EARTHWORK
 EXCAVATION 108.5 C.Y.
 10% 12.9
 183.4 C.Y.S
 COMP FILL 4.0 C.Y.S.
 10% .5
 5.1 C.Y.S

SUB-GRADE
 TYPE OF SUB-GRADE TREATMENT SHALL BE DETERMINED BY THE CITY ENGINEER. SUB-GRADE TREATMENT MAY CONSIST OF LIME TREATMENT, CEMENT TREATMENT, SUB-GRADE MODIFICATION, OR ANY COMBINATION OF THESE.

NOTE TO FIELD ENGINEER & CONTRACTOR
 Grade posting and clear right-of-way for proposed sidewalk. Compact fill in sidewalk area TO BE CONSTRUCTED BY "OTHERS".

RUTGERS STR.
 N.L. 14TH STR TO S.L. PARKDALE STR.
 CITY of WICHITA, KANSAS
 (34' FF) 2" asph conc wearing surface
 6" bituminus base w comb cb & grt.
 R.W. LINN CITY ENGINEER
 Proj No. 472-76-245-80509000-000 2/12

