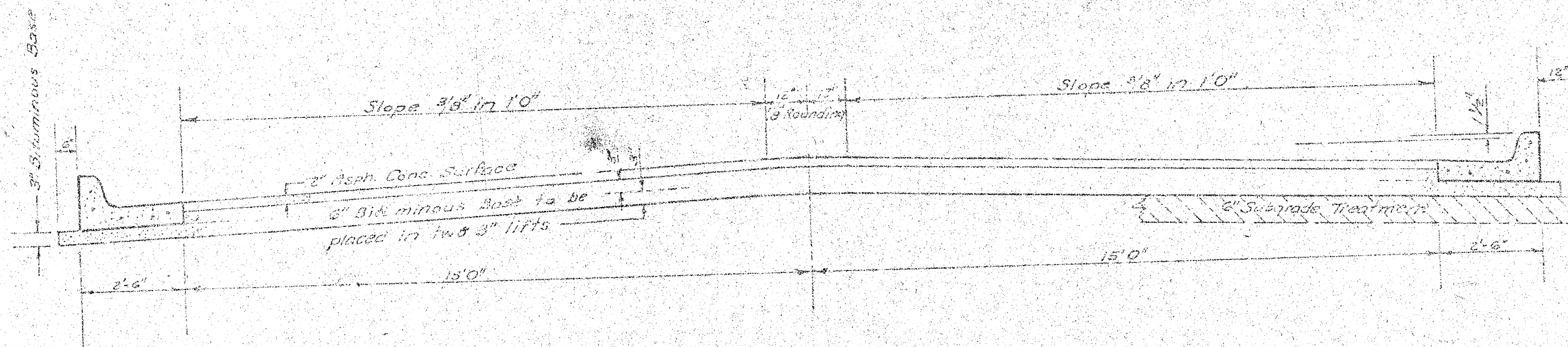


NANTUCKET & RUTGERS
W.L. PRESCOTT TO S.L. 14TH STREET.
PROJ No. 472-76-245-80542-000-000-001



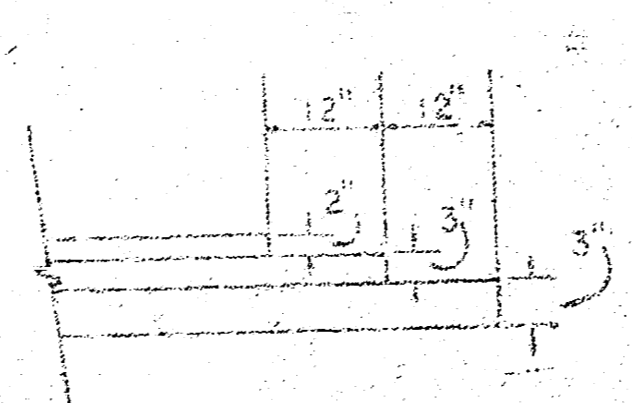
TYPICAL SECTION

35' ASPHALTIC CONCRETE PAVEMENT WITH BITUMINOUS BASE

*The A.C. Pavement between the curb and the gutter shall be paid as Sq Yds. of A.C. Pavement (at Bituminous Base).
 The Bituminous Base under the curb with a gutter shall be paid as Sq Yds. of Bituminous Base.*

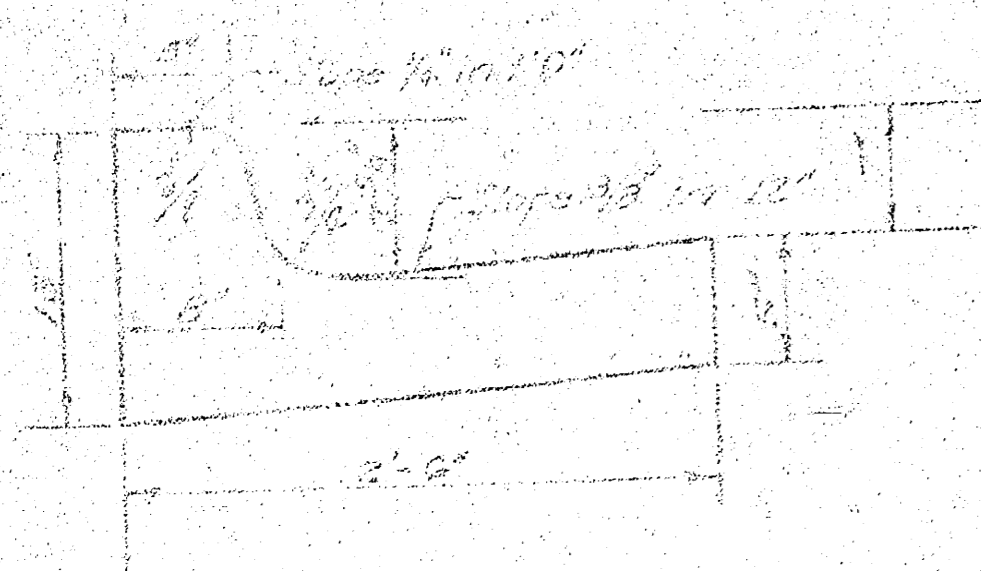
A TACK COAT OF EMULSIFIED ASPHALT (SS-1H) SHALL BE APPLIED AT AN APPROXIMATE RATE 0.05 GALLONS PER 30 YD BETWEEN LIFTS OF ASPHALTIC MATERIALS WHEN ORDERED BY THE ENGINEER. TACK COAT WILL NOT BE PAID FOR DIRECTLY AND SHALL BE CONSIDERED AS SUBSIDIARY TO PRICE BID FOR ASPHALTIC PAVEMENT.
 BITUMINOUS BASE AND ASPHALTIC CONCRETE WEARING SURFACE SHALL BE PLACED WITH A LAYDOWN MACHINE HAVING AUTOMATIC ELECTRONIC CONTROLS FOR CROWN AND GRADE. CONSTRUCTION JOINTS IN EACH LIFT SHALL BE STAGGERED A MINIMUM DISTANCE OF 1' WITH JOINTS IN PRECEDING LIFTS AND PLACED SUCH THAT A JOINT WILL BE CONSTRUCTED ON THE CENTERLINE IN THE TOP LIFT.

DETAIL OF TRANSVERSE CONSTRUCTION JOINTS

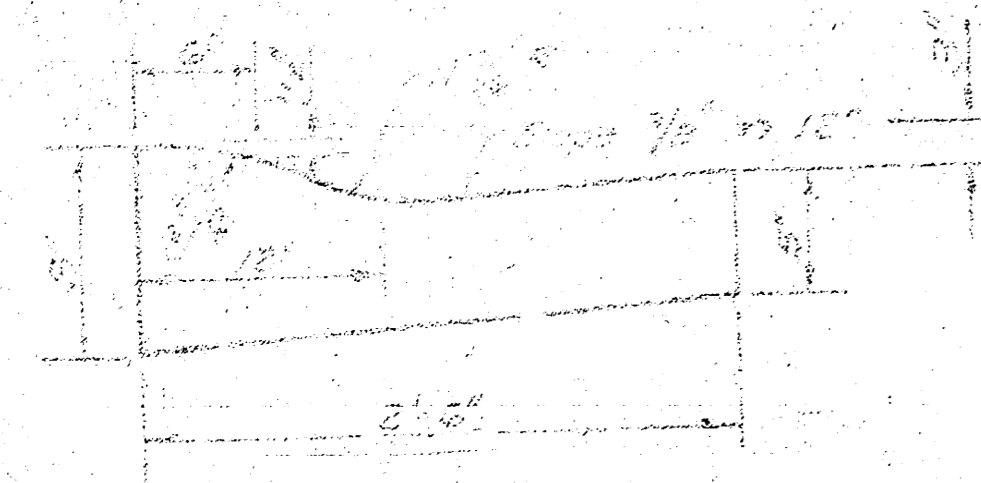


TRANSVERSE CONSTRUCTION JOINTS SHALL BE CONSTRUCTED IN FLEXIBLE BASE PAVEMENTS AT LOCATIONS WHERE PAVEMENT TEMPORARILY ENDS TO FACILITATE FUTURE PAVEMENT CONSTRUCTION AS SHOWN BY DETAIL. THE COST OF CONSTRUCTING THE TRANSVERSE CONSTRUCTION JOINTS SHALL NOT BE MEASURED OR PAID FOR DIRECTLY BUT SHALL BE INCLUDED IN THE BID PRICE FOR SQUARE YARDS OF ASPHALTIC CONCRETE PAVEMENT.

COMBINED CURB & GUTTER



ROLL TYPE CURB & GUTTER

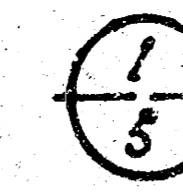


CITY OF WICHITA KANSAS

DEPARTMENT OF PUBLIC WORKS & ENGINEERING
 Division

R. W. LIGN CITY ENGINEER

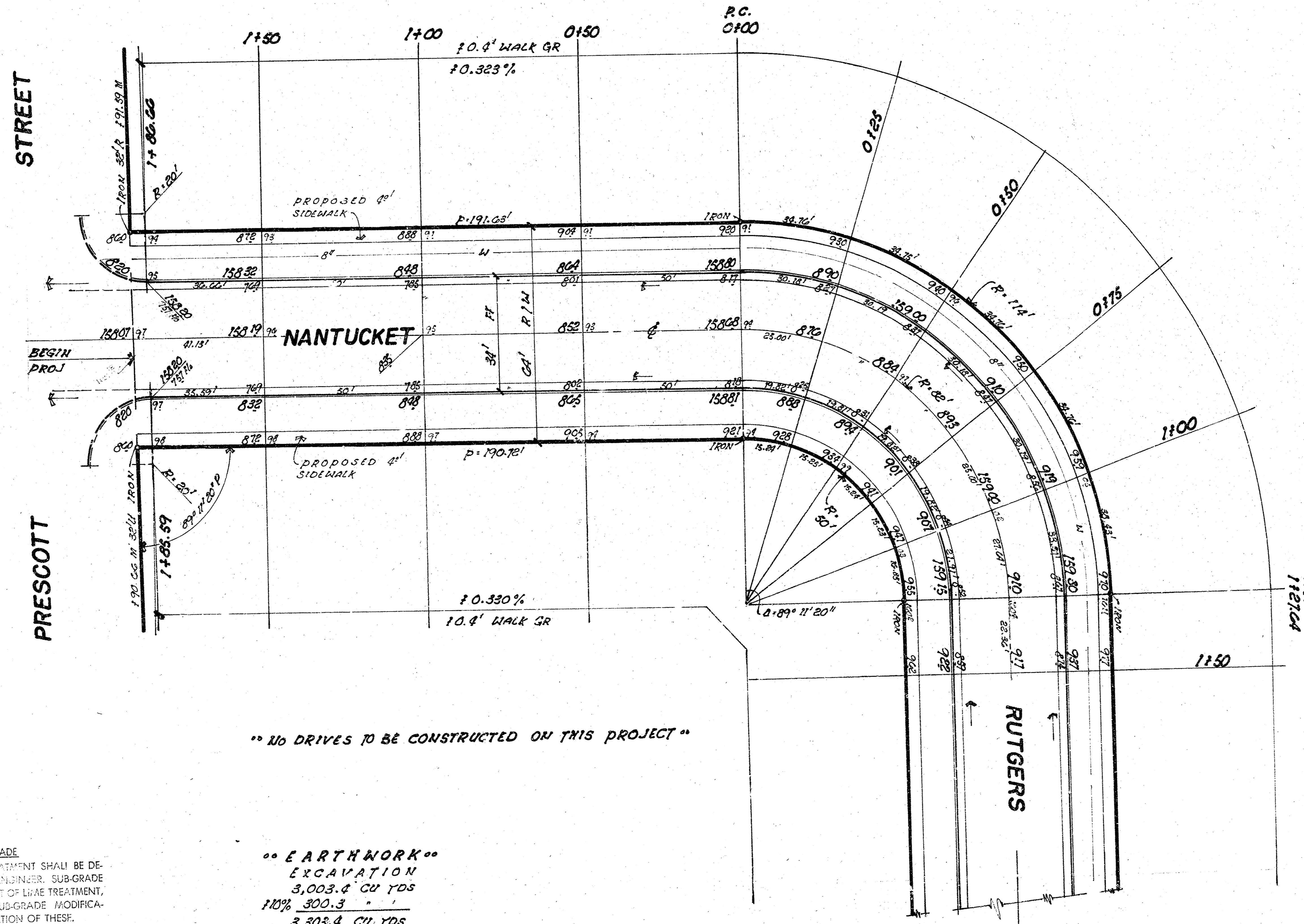
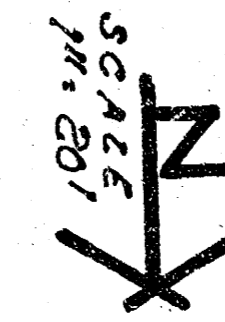
DATE PER NO.



1/3

FILMED FROM THE BEST AVAILABLE COPY

B.M. 15930 R.R. SPIKE WEST FACE P. POLE. APPROX 115' N. & 20' S.
 N.W. CORNER 13TH AND PRESCOTT. (8th p.p. WEST MAIZE RD).



CURVE DATA BASED ON ϕ RADIUS 82.00' Δ 89° 11' 20"
 TAN = 80.85' 20.96187 MIN | H ARC.

STATION	ARC	CHORD LENGTH B' O.S. FC S.C.	CHORD LENGTH B' O.S. FC K.C.B.	DEFL.	TOTAL DEFL.
P.C. 0+00					0° 00' 00"
0+25	25.00'	17.31'	32.50'	8° 44' 03"	8° 44' 03"
0+50					17° 28' 06"
0+75					26° 12' 09"
1+00	25.00'	17.31'	32.50'	8° 44' 03"	34° 56' 12"
P.T. 1+27.64	27.64'	19.12'	35.90'	9° 39' 28"	44° 35' 40"

" NO DRIVES TO BE CONSTRUCTED ON THIS PROJECT "

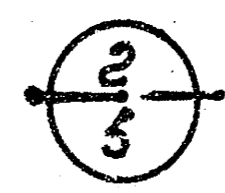
" EARTHWORK "

EXCAVATION
 3,003.4 CU YDS
 10% 300.3
 3,303.4 CU YDS

3380 SQ YDS MANIPULATION

SUB-GRADE
 TYPE OF SUB-GRADE TREATMENT SHALL BE DETERMINED BY THE FIELD ENGINEER. SUB-GRADE TREATMENT MAY CONSIST OF LIME TREATMENT, CEMENT TREATMENT, SUB-GRADE MODIFICATION, OR ANY COMBINATION OF THESE.

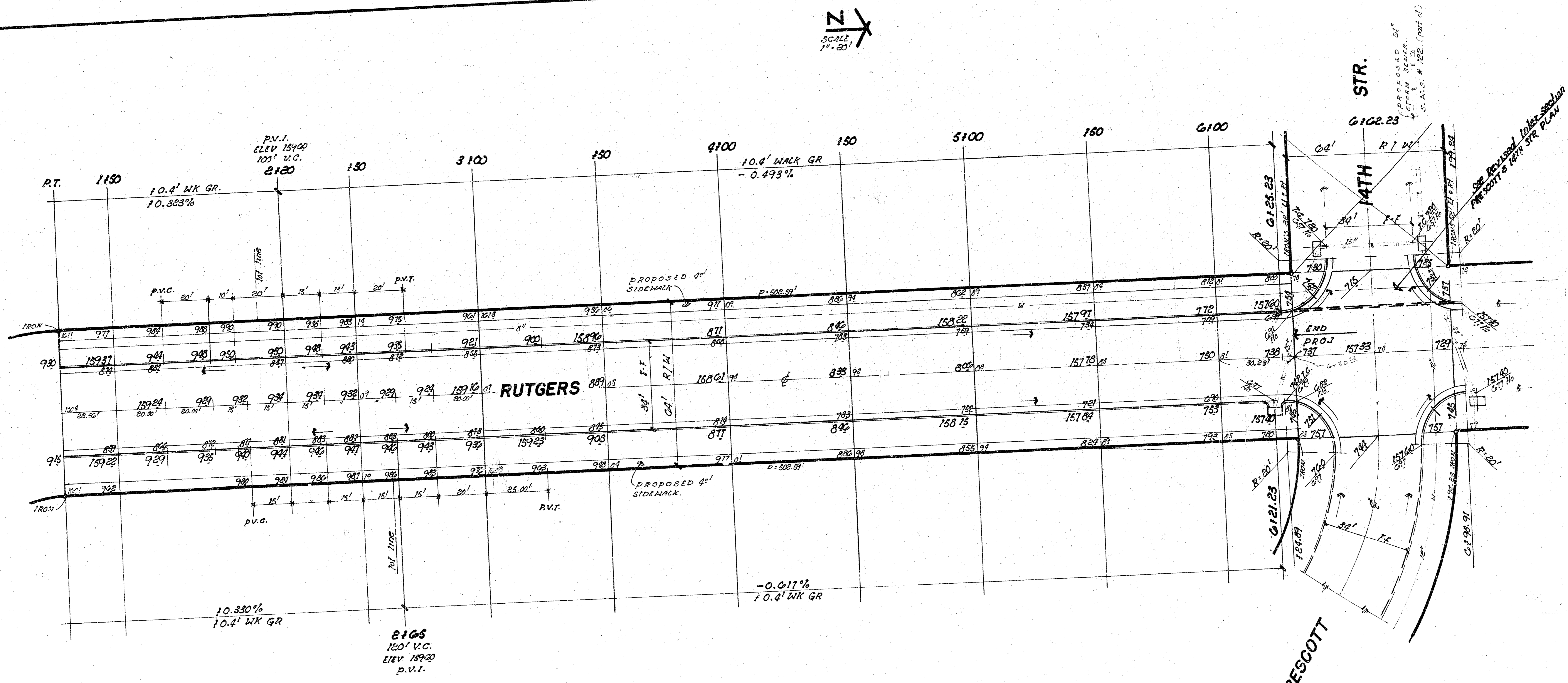
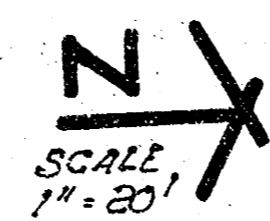
NANTUCKET & RUTGERS
 W.L. PRESCOTT TO S.L. 14TH STREET
CITY of WICHITA, KANSAS
 (34" FF) 2" asph conc wearing surface
 6" bituminous base w/ comb cb + grt.
 R.W. LINN CITY ENGINEER
 Proj No. 472-76-245-80542-000-000-001



FILMED FROM THE BEST AVAILABLE COPY

Survey Approved
 Plot W.C.E.E.
 Checked
 Checked

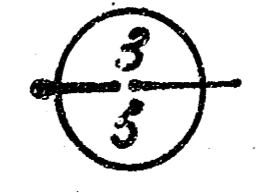
1. This drawing is the property of the City of Wichita, Kansas. It is to be used only for the project and location shown hereon. It is not to be used for any other purpose without the written consent of the City Engineer.



STR.

14TH

PRESCOTT



FILMED FROM THE BEST AVAILABLE COPY.....