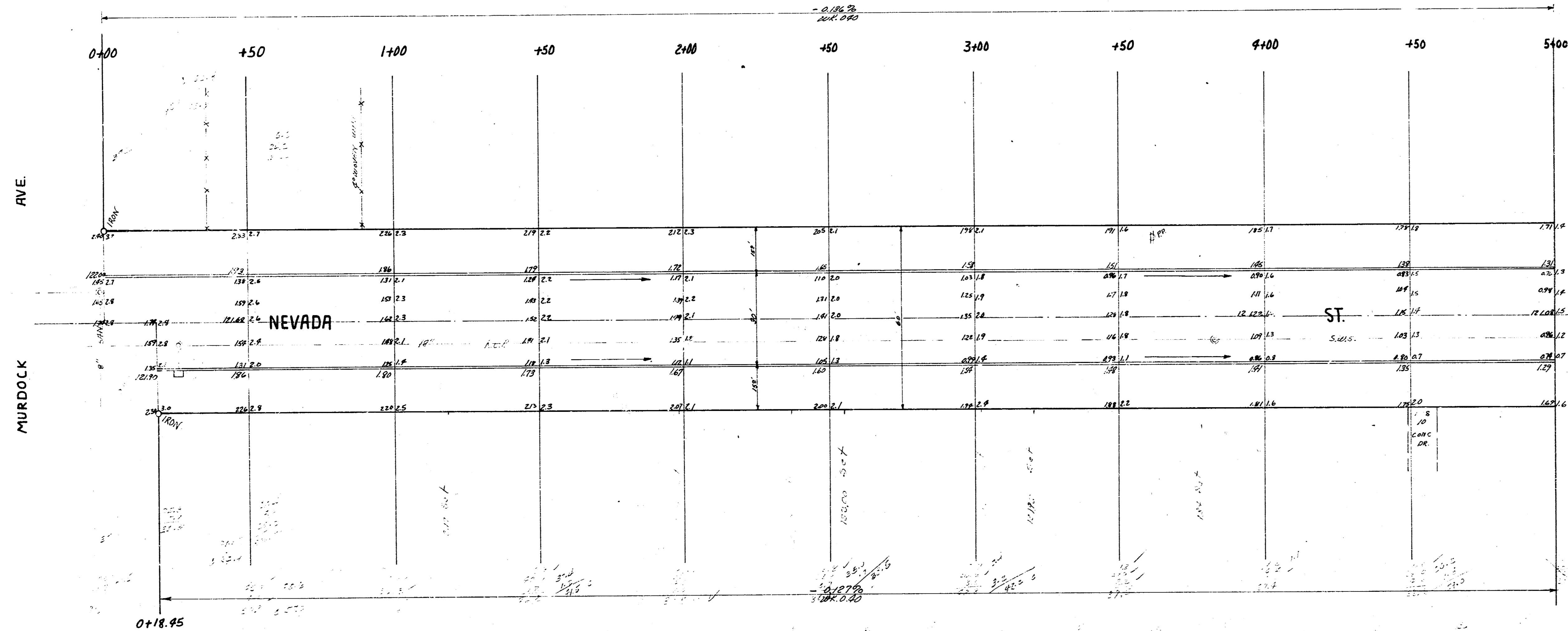
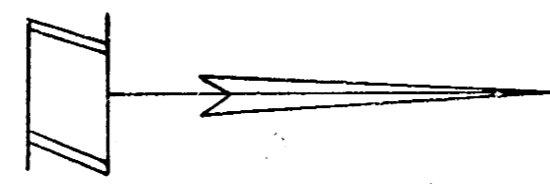
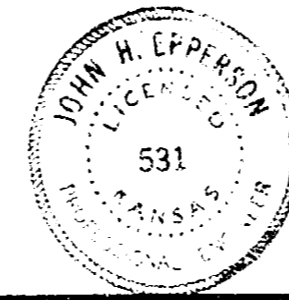


B.M. 12373 4" N OF SE. COR. CONC. PORCH HOUSE 115' N OF MURDOCK W.S. NEVADA  
 B.M. 122469 S.W. COR. CONC. 1ST STEP HD. # 244 NO NEVADA  
 BASE LINE ON ④



NOTE TO CONTRACTOR  
 ALL ENTRANCE PIPES ARE TO BE  
 DISPOSED OF IN ACCORDANCE WITH  
 INSTRUCTIONS OF THE CITY DIRT CHECKER

NEVADA ST.  
 N.L. MURDOCK SL. 87H  
 30' CONC. (CB)  
 CITY OF WICHITA, KANS.  
 B.E. SMITH CITY ENGINEER  
 DATE APRIL 1953 PROT NO C.12-113



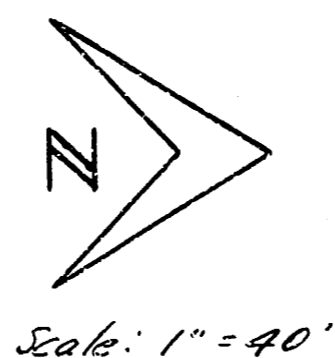
TOTAL 5124.0



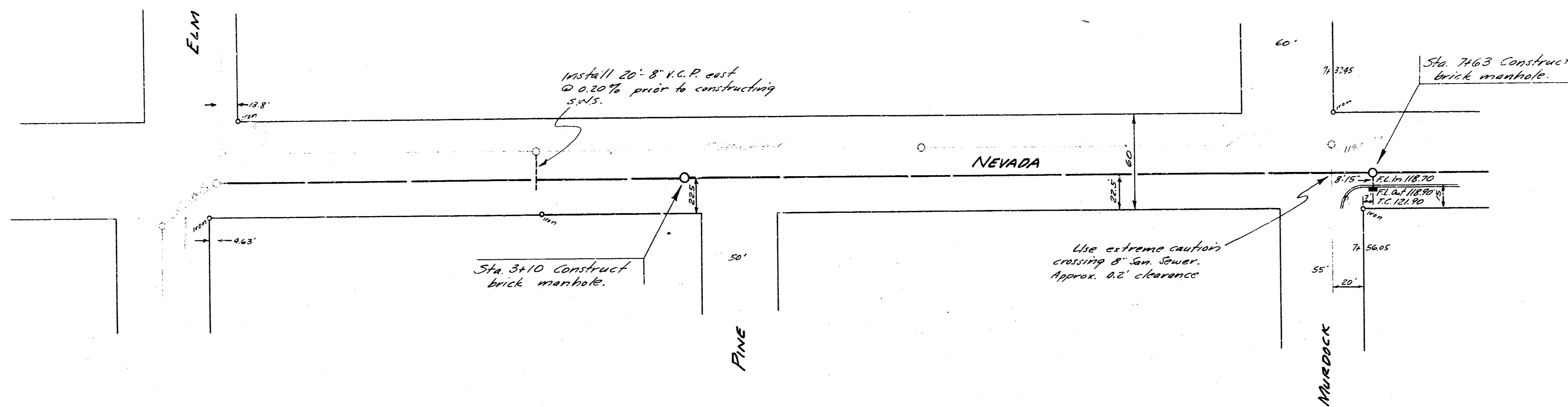


B.M. 123.73 4' N. of S.E. Cor. Conc. Parch. Ho. 15' N. of Murdock, W.J. Nevada

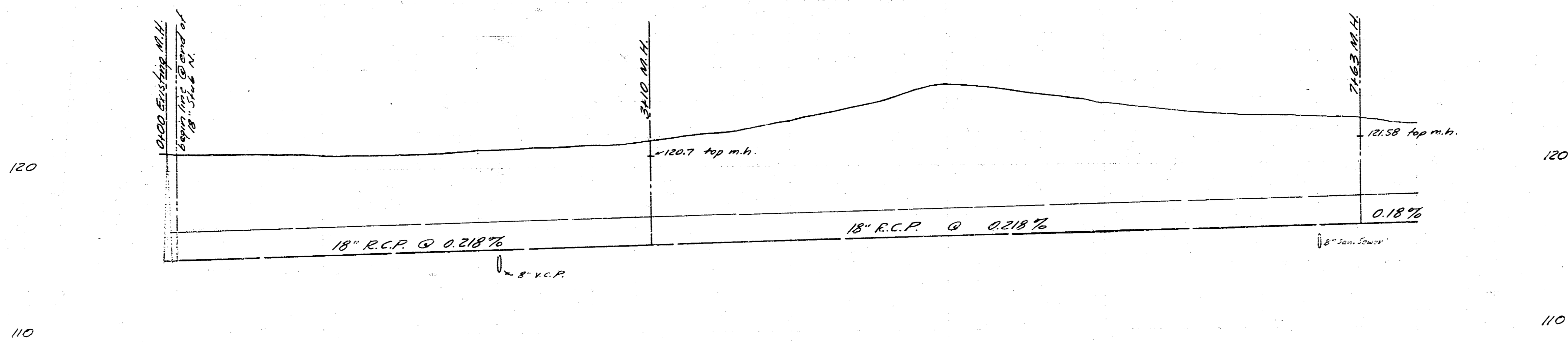
B.M. 122.17 S.E. Cor. Conc. Parch. Ho. #813 Nevada



Scale: 1" = 40'



NOTE: Bid of sand fill is to include cost of flushing where sand is used. If excavated material is suitable for backfill, limeal feet of flushing will be paid.



0+0 1186.0 Elev. m.h. existing M.H.

1+0 1188.2

2+0 1185.09

3+0 1187.25 Elev. m.h. 18" R.C.P. @ 0.218%

4+0 1185.17

5+0 1185.69

6+0 1185.71

7+0 1186.13

7+63 1185.8 Elev. m.h. 18" R.C.P. @ 0.18%

8+0 1186.33

INCIDENTAL DRAINAGE  
 NEVADA ST.  
 N.L. MURDOCK TO S.L. 8TH  
 CITY OF WICHITA, KANSAS  
 B.E. SMITH - CITY ENGINEER  
 APR. 1959 PROJ. C18-113

1/2

