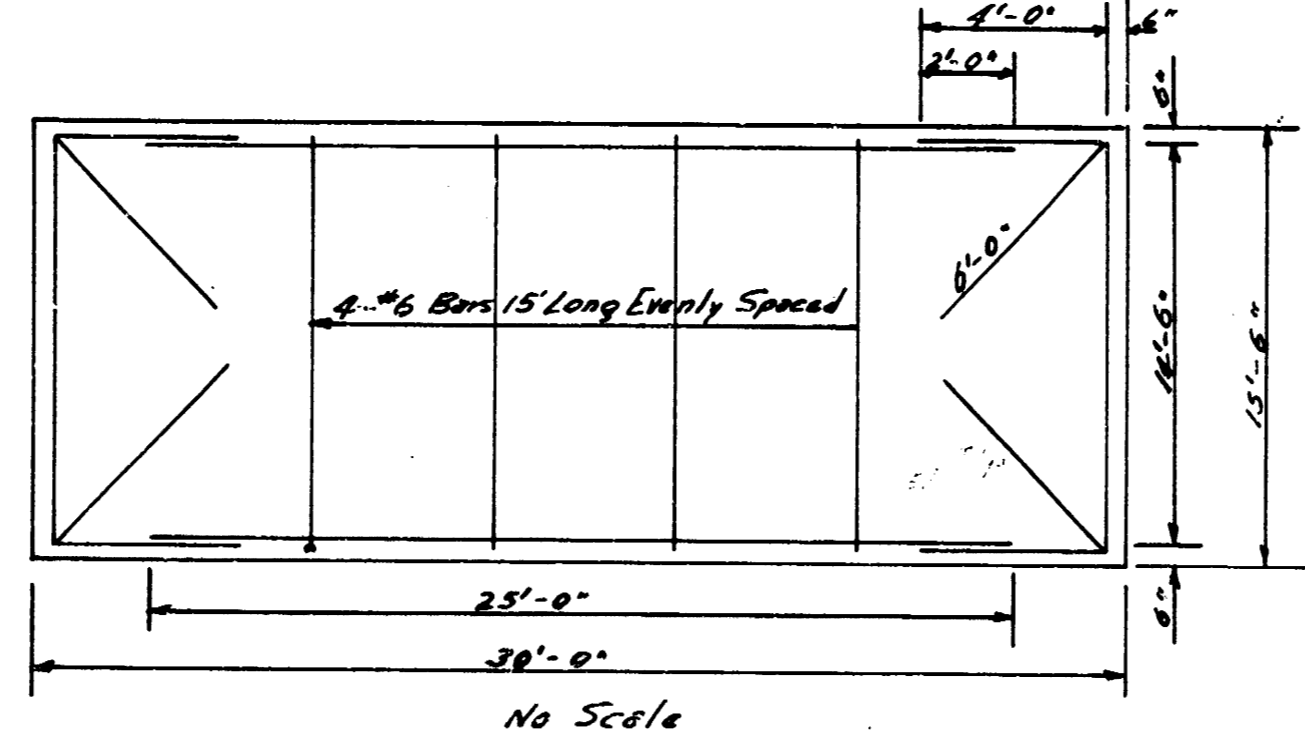
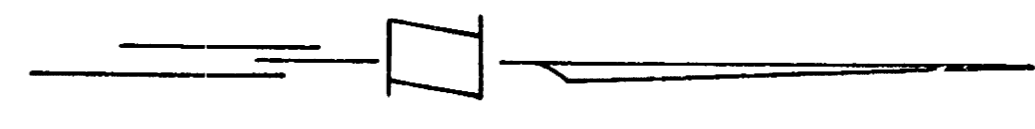


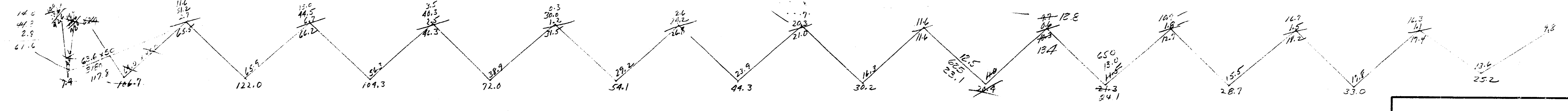
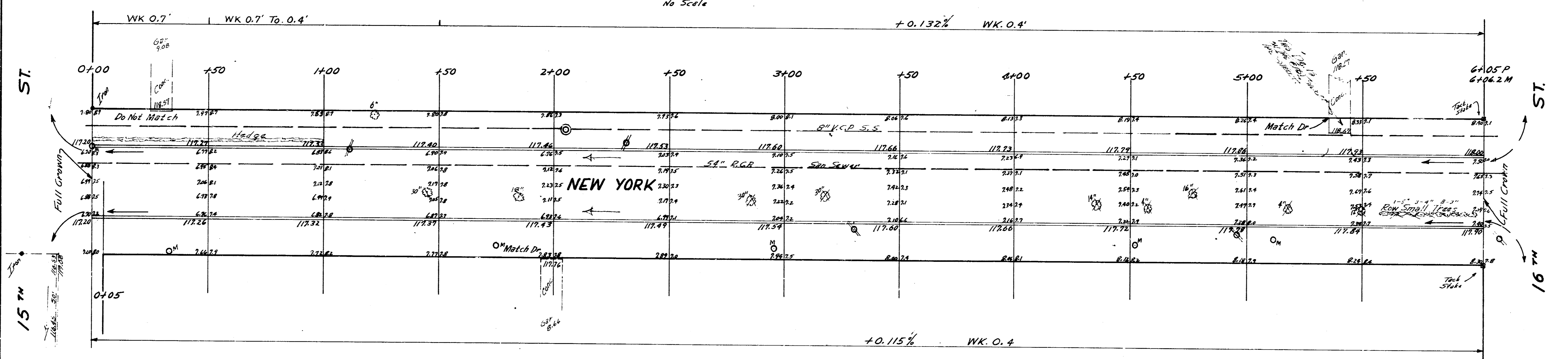
B.M. 118.00 NW Cor. 16th Pennsylvania House 1703 N.E. Cor. of Porch.
 B.M. 120.93 East End South Co. West End Canal Bridge On 15th
 B.M. 117.03 6" in Globe East Co. Penn. S.L. 15th
 Stationing On East Prop Line



NOTE: THIS STEEL PATTERN TO
 BE USED ON WEST SIDE ONLY
 USE STANDARD PATTERN ON
 EAST SIDE.



Checked by
 Drawn by
 Date



City
 3.7
 4.1 C. 1/2 C.I.
 Excavation
 Prep
 4.1 C. 1/2 C.I.



NEW YORK
 S.L. 16th TO N.L. 15th
 30 CONG. CB
 CITY OF WICHITA KAN.
 BE SMITH CITY ENGINEER
 MARCH, 1957 PROJ. NO. C16-61