

PAVING PLAN
1942
N.Y. COURT
N.L. 3RD ST
LOT 5, BLK B

1942
NEW YORK COURT - N.L. THIRD TO & LOT 5-BLOCK-B

28-C.1.
27' Curb to Curb
As to
Change grade
Build C.B. @ 3-4
C.M. 6-27-42

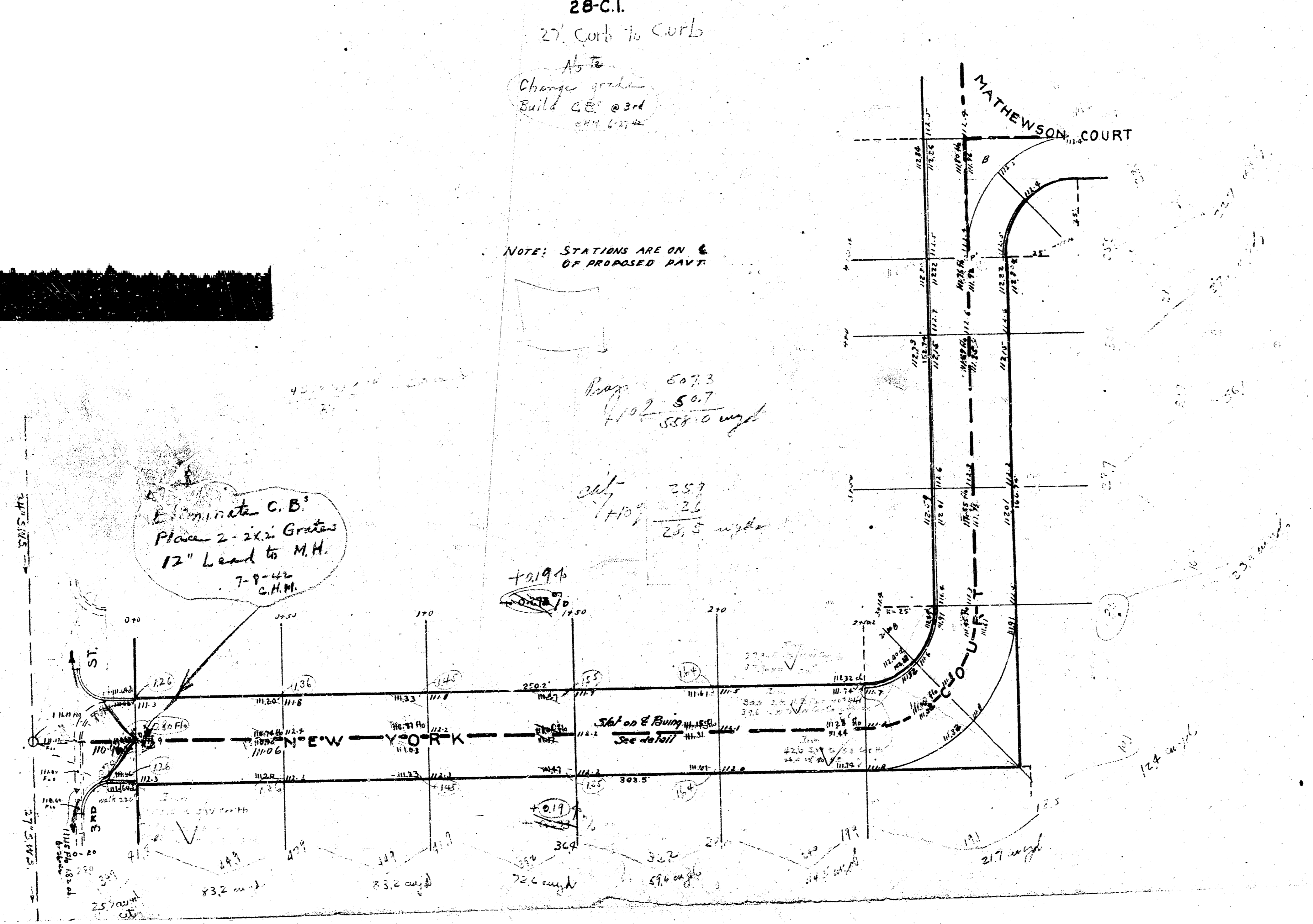
NOTE: STATIONS ARE ON &
OF PROPOSED PAVT.

Range 607.3
410' 50.7
410' 588.0 w/pt

367' 25.7
110' 26
21.5 w/pt

Eliminate C.B.
Place 2-2x2 Grates
12" Lead to M.H.
7-9-42
C.H.M.

B.M. 11180 K IN KEELER PLOT-22-11180 SE COR NY 132

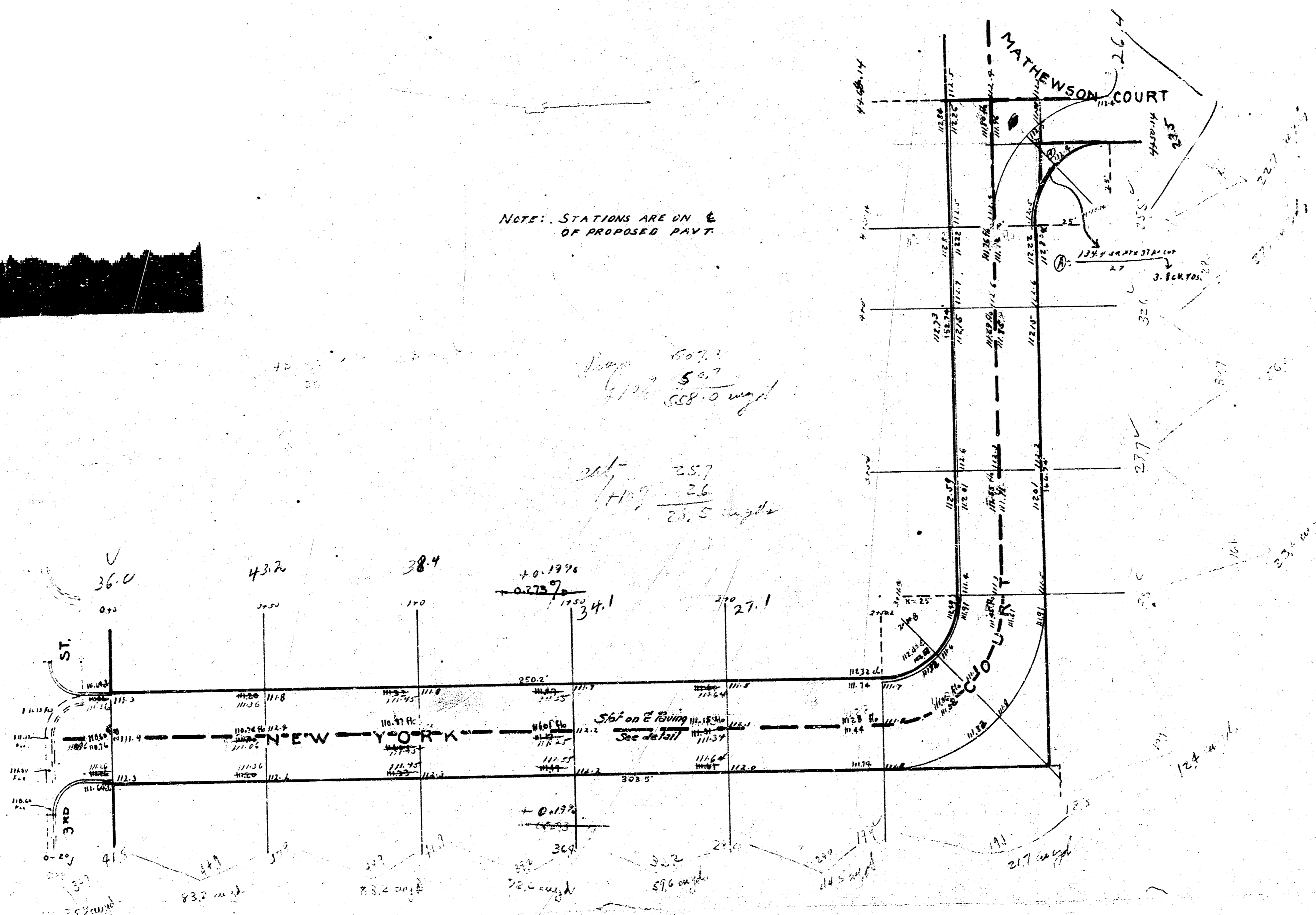


1942
 NEW YORK COURT - N.L. THIRD TO & LOT 5-BLOCK-B
 28-C.1.
 27' Curb to Curb



NOTE: STATIONS ARE ON &
 OF PROPOSED PAVT.

Handwritten notes:
 60.73
 50.7
 588.0 wpt
 257
 26
 26.5 wpt



B.M. 111.80 "K" IN KEELER FRT OF M.N. No. SE c. 30 N.Y. + 322