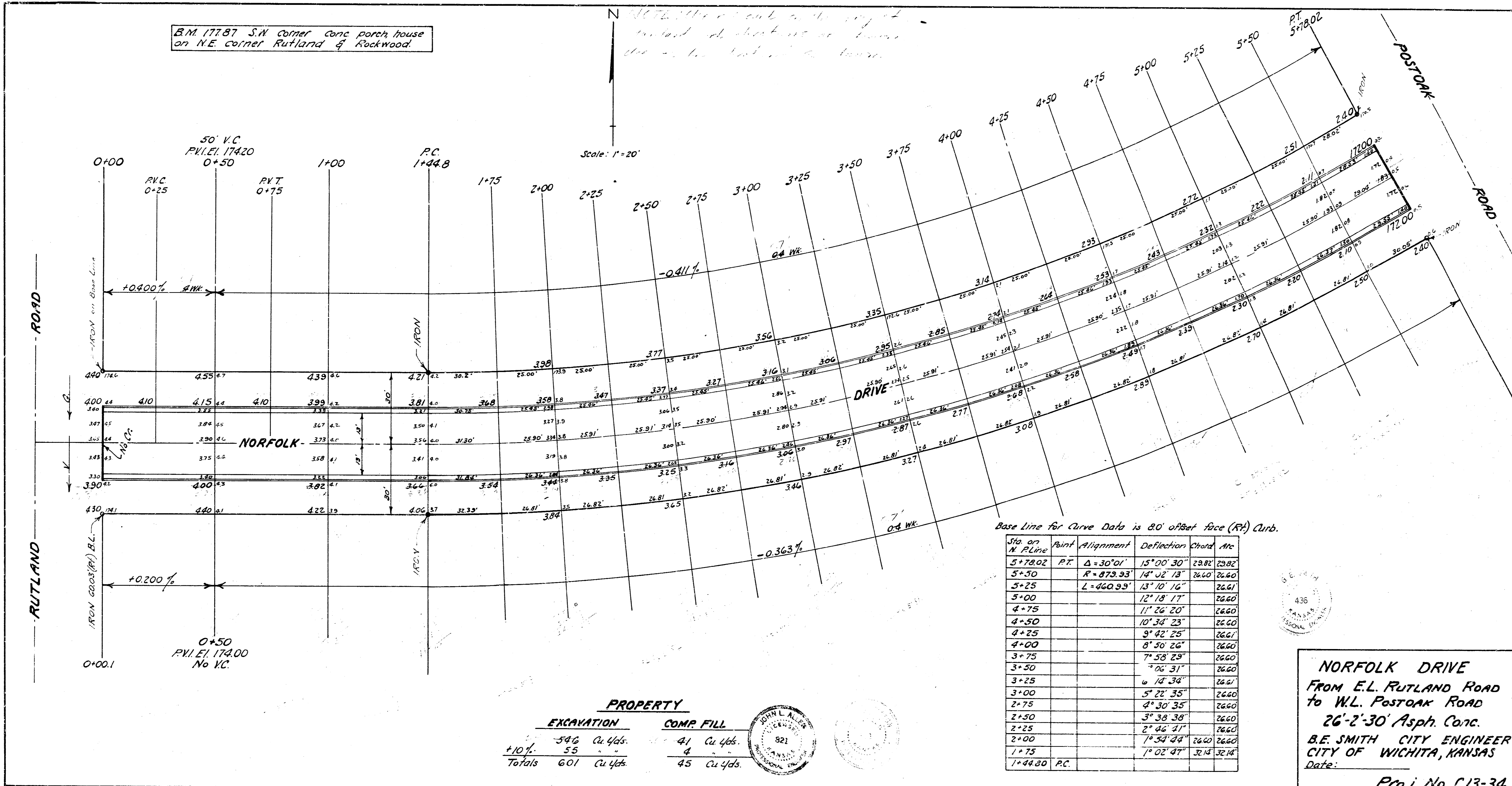


B.M. 17787 S.W. corner conc porch house on N.E. corner Rutland & Rockwood.



PROPERTY	
EXCAVATION	COMP. FILL
546 Cu Yds.	41 Cu Yds.
+10%	4
Totals 601 Cu Yds.	45 Cu Yds.

Base Line for Curve Data is 20' offset face (Rt) Curb.

Sta on W. P. Line	Point Alignment	Deflection	Chord Arc
5+78.02	P.T.	$\Delta = 30^{\circ} 01'$	15' 00" 30"
5+50		$R = 878.93'$	14' 02" 18"
5+25		$L = 460.93'$	13' 10" 16"
5+00			12' 18" 17"
4+75			11' 26" 20"
4+50			10' 34" 23"
4+25			9' 42" 25"
4+00			8' 50" 26"
3+75			7' 58" 28"
3+50			7' 06" 31"
3+25			6' 14" 34"
3+00			5' 22" 35"
2+75			4' 30" 35"
2+50			3' 38" 36"
2+25			2' 46" 37"
2+00			1' 54" 38"
1+75			1' 02" 47"
1+44.80	P.C.		31' 14" 32' 14"

NORFOLK DRIVE
 FROM E.L. RUTLAND ROAD
 TO W.L. POSTOAK ROAD
 26'-2'-30" Asph. Conc.
 B.E. SMITH CITY ENGINEER
 CITY OF WICHITA, KANSAS
 Date: _____
 Proj. No. C13-34