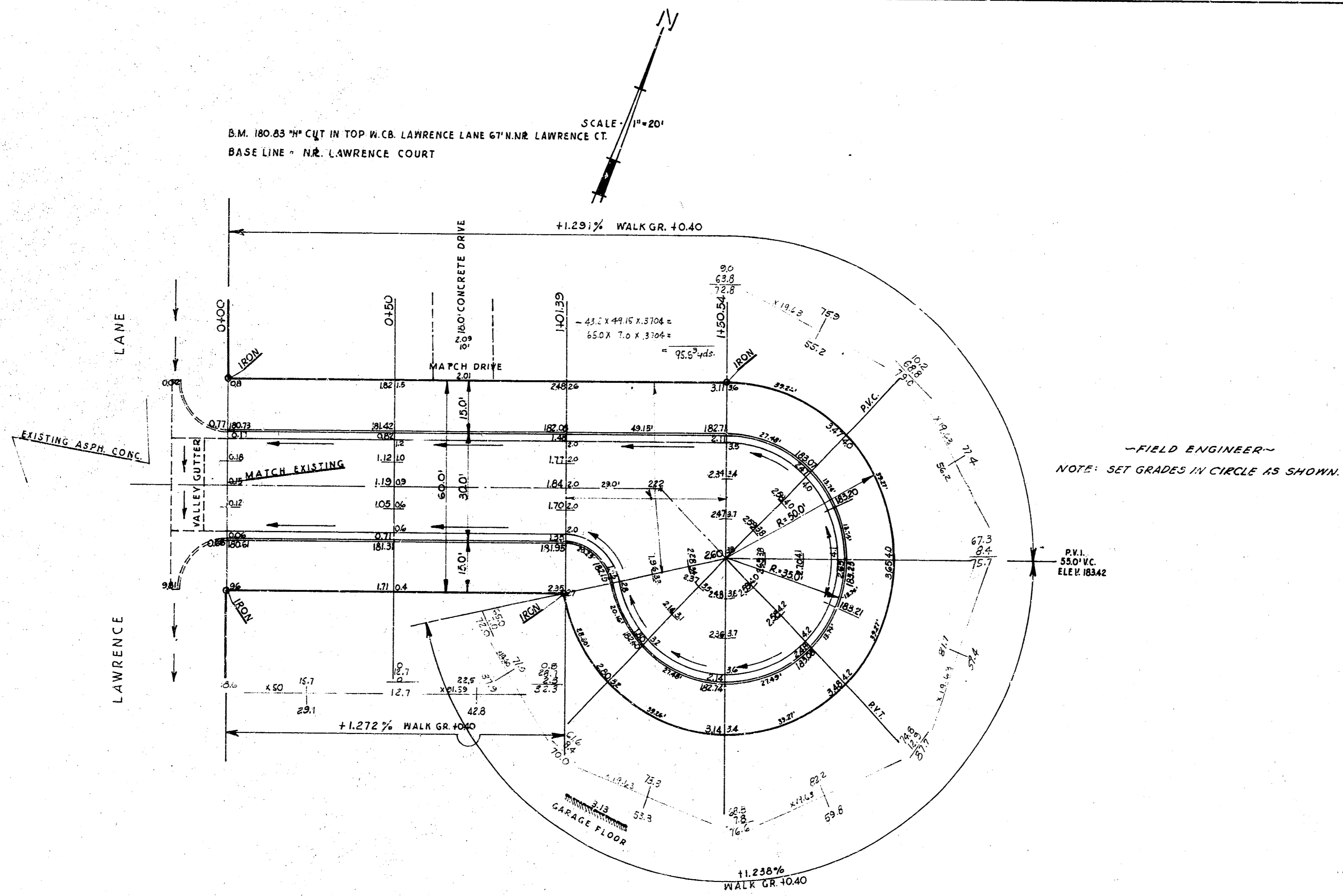


Survey D. Hughes & Co.
 1115 S. 5th
 Wichita, Kansas



—FIELD ENGINEER—
 NOTE: SET GRADES IN CIRCLE AS SHOWN.

EARTH WORK
 PROP
 489.2
 10% 48.9
 538.7 Cu. Yds. Excav.

NORTH LAWRENCE COURT
 E.L. LAWRENCE LANE TO INCL. CUL-DE-SAC IN BLK. 1
 PINE VALLEY 5TH ADDITION
 26'-2'-30 ASPHALTIC CONC.
 CITY OF WICHITA, KANSAS
 B.E. SMITH CITY ENGINEER
 DATE: APRIL 1960 PROJECT NO. C19-142