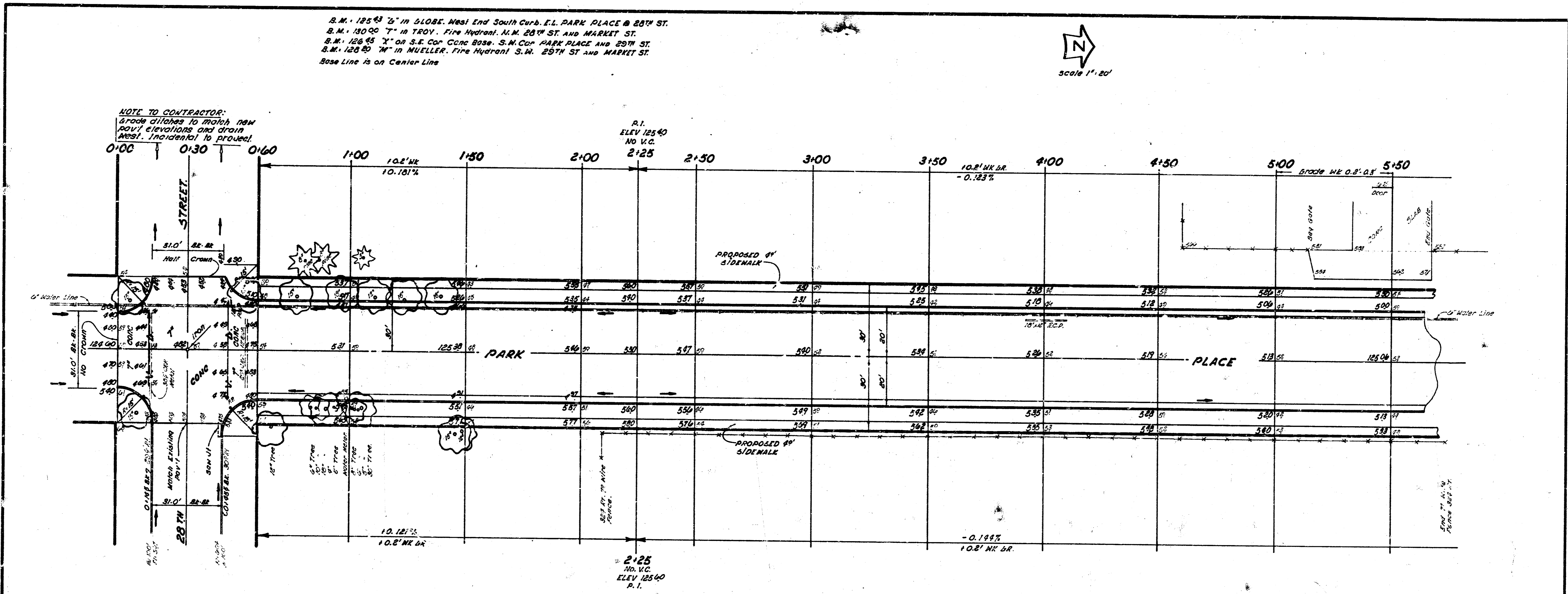


S. M. 125 54 2" in SLOPE, West End South Curb, E.L. PARK PLACE @ 28TH ST.
 S. M. 130 00 7" in TROY - Fire Hydrant, N.M. 28TH ST. AND MARKET ST.
 S. M. 125 55 7" in S.E. Cor. Cline Bldg., S.M. Cor. PARK PLACE AND 28TH ST.
 S. M. 125 50 7" in MUELLER, Fire Hydrant, S.W. 28TH ST. AND MARKET ST.
 Base Line is on Center Line



NOTE TO CONTRACTOR:
 Slope changes to match new
 road elevations and drain
 areas, incidental to proposed

"-SIDEWALK"
 GRADE PARKING AND CLEAR RIGHT OF WAY FOR
 PROPOSED SIDEWALK. COMPACT BACKFILL IN
 SIDEWALK AREA. SIDEWALKS BY OTHERS

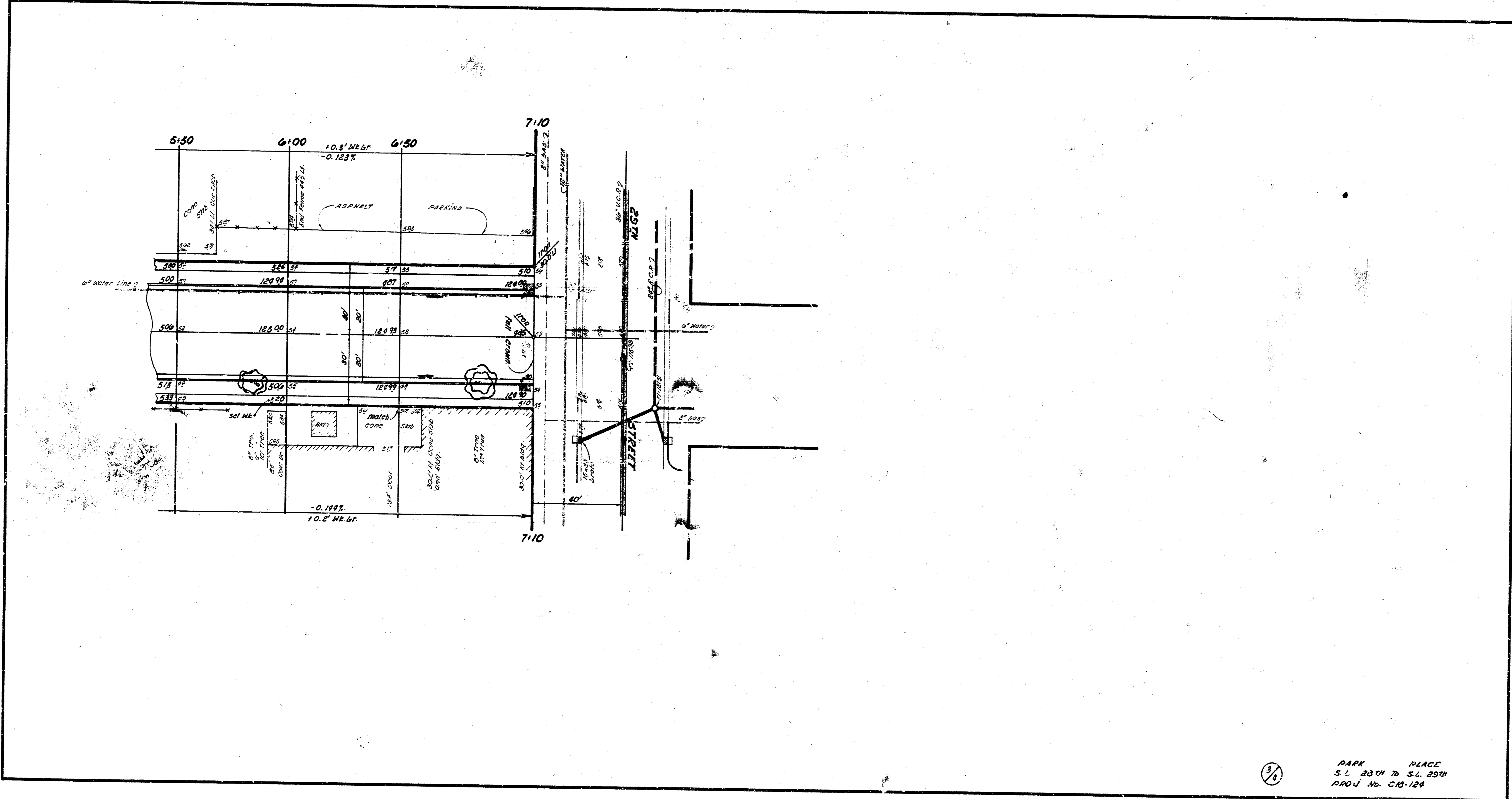
P.I.
 ELEV 12540
 NO V.C.

-EARTHWORK-

PROPERTY		CITY	
EXCAVATION	COMP FILL	EXCAVATION	COMP FILL
448.6 CU YDS	167.4 CU YDS	143.0 CU YDS	1.2 CU YDS
105.42 S	105.16 S	107.73 S	105.1 S
467.3 CU YDS	184.9 CU YDS	143.9 CU YDS	1.3 CU YDS
511.6 CU YDS S.B.M.		50.4 CU YDS S.B.M.	

PARK PLACE
 S.L. 28TH STREET TO S.L. 29TH STREET.
36'-2'-40' ASPHALTIC CONC
 CITY OF NICHITA, KANSAS
 B. E. SMITH CITY ENGINEER
 DATE: 200 1709 PROJ. NO. C-18-124

14 - Eng.
 1 - Gen.



36

PARK PLACE
S.L. 2874 TO S.L. 2974
AROU No. C18-124

14-Engr
-10-21-24