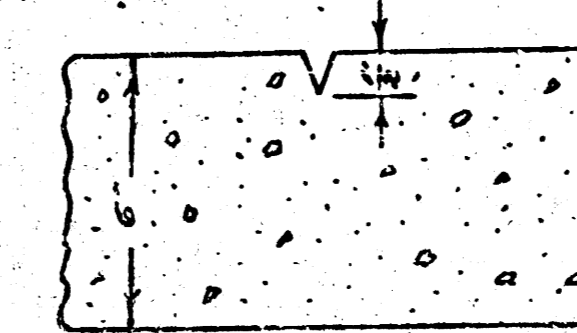
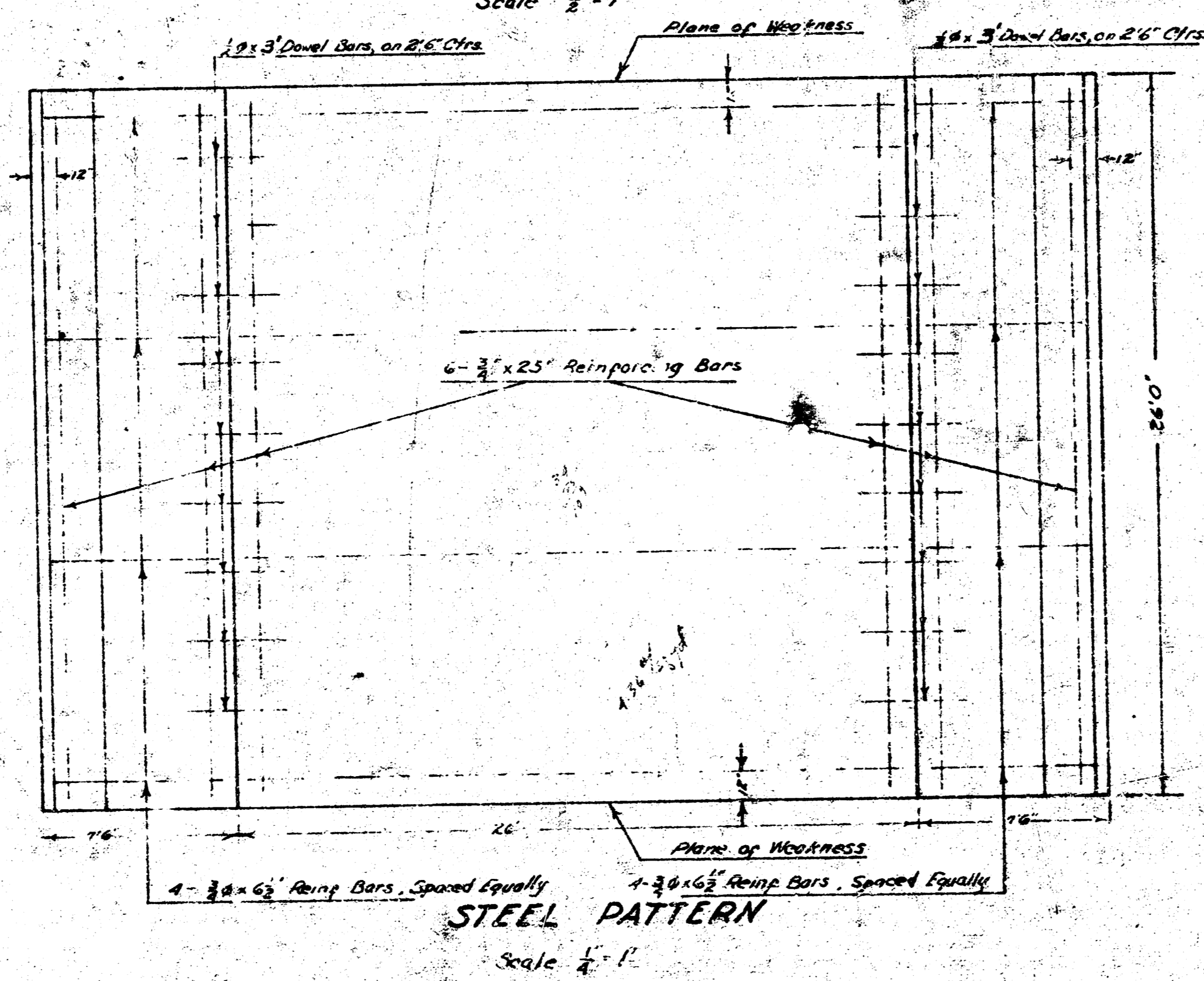
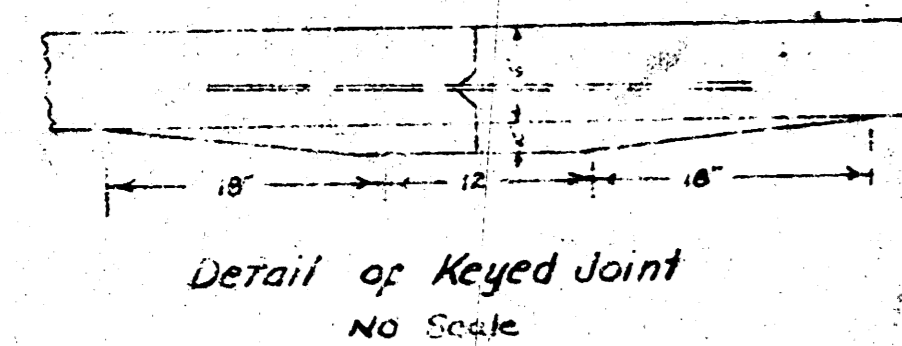
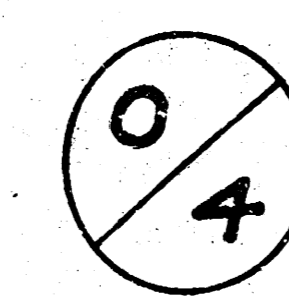


TYPICAL SECTION

Scale 1/2" = 1'

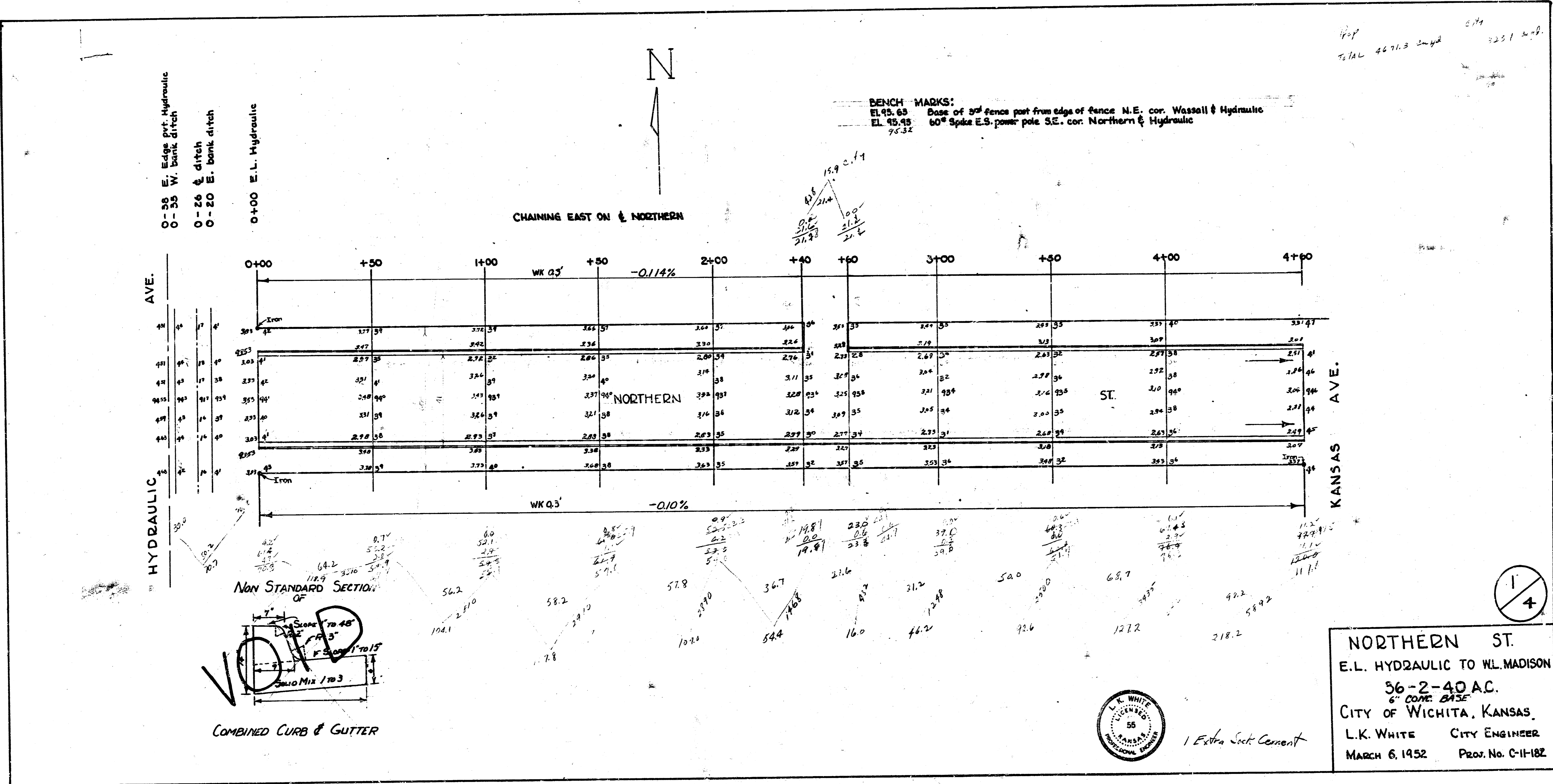


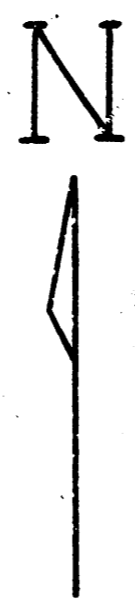
Plane of Weakness to Be Cut with Double-Fine Groove to Depth As Shown in a Straight Line from Curb to Curb - 24" Ctr. to Ctr.



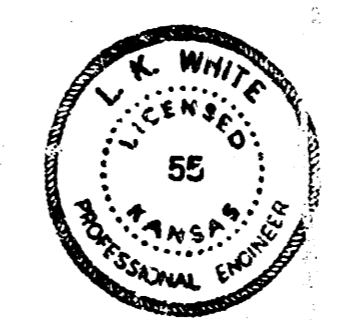
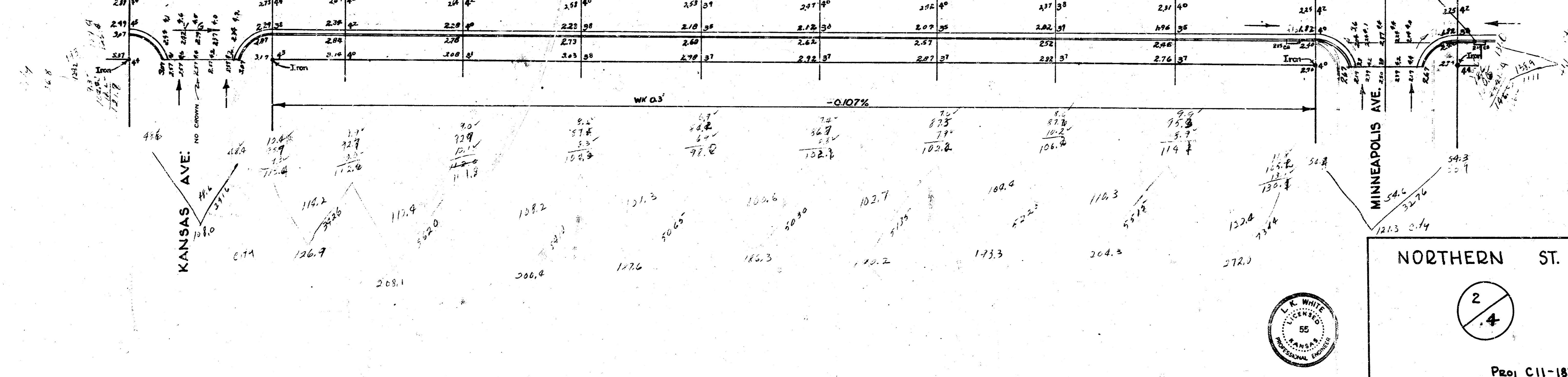
**NORTHERN**  
 ELHYDRAULIC TO WL MADISON  
 36-2-40 A.C.  
 6" Conc. Base  
**CITY OF WICHITA KANSAS**  
 LK WHITE CITY ENGINEER  
 MARCH 6, 1952 Proj. No. C11-152





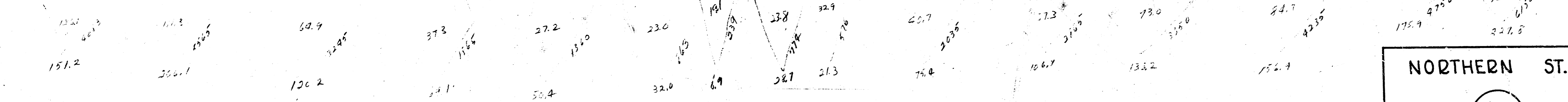
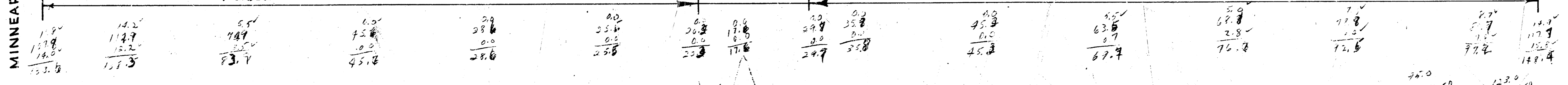
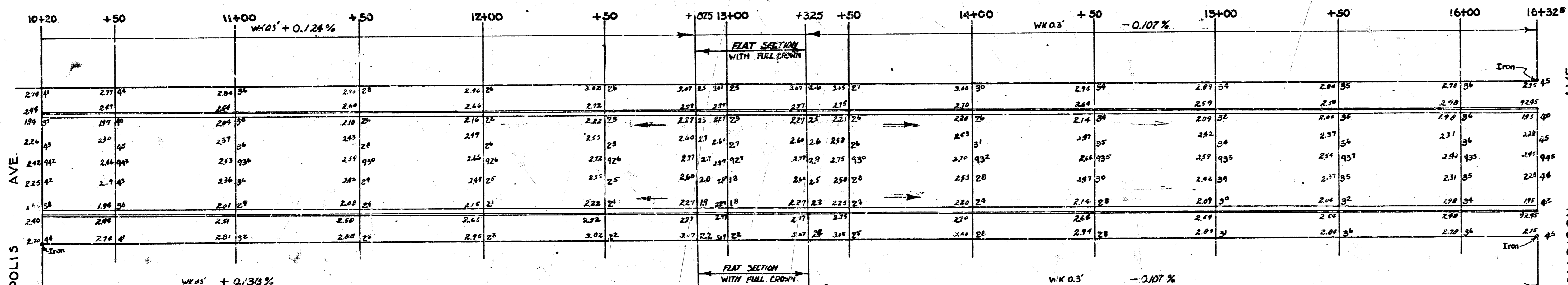
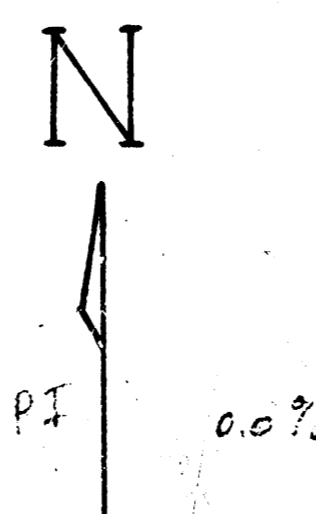


Station	4+60	5+20	+80	6+00	+50	7+00	+50	8+00	+50	9+00	9+60	10+20
Top	337.41	324.85	320.43	315.42	311.51	307.51	303.58	299.58	295.40	291.40	287.40	283.41
Subgrade	297.11	294.40	290.40	285.58	281.51	277.54	273.58	269.58	265.40	261.40	257.40	253.41
Proposed	281.41	278.40	274.40	270.40	266.40	262.40	258.40	254.40	250.40	246.40	242.40	238.41
Bottom	249.41	246.40	242.40	238.40	234.40	230.40	226.40	222.40	218.40	214.40	210.40	206.41



NORTHERN ST.

Proj C11-182



NORTHERN ST.

Proj. No. C11-182