

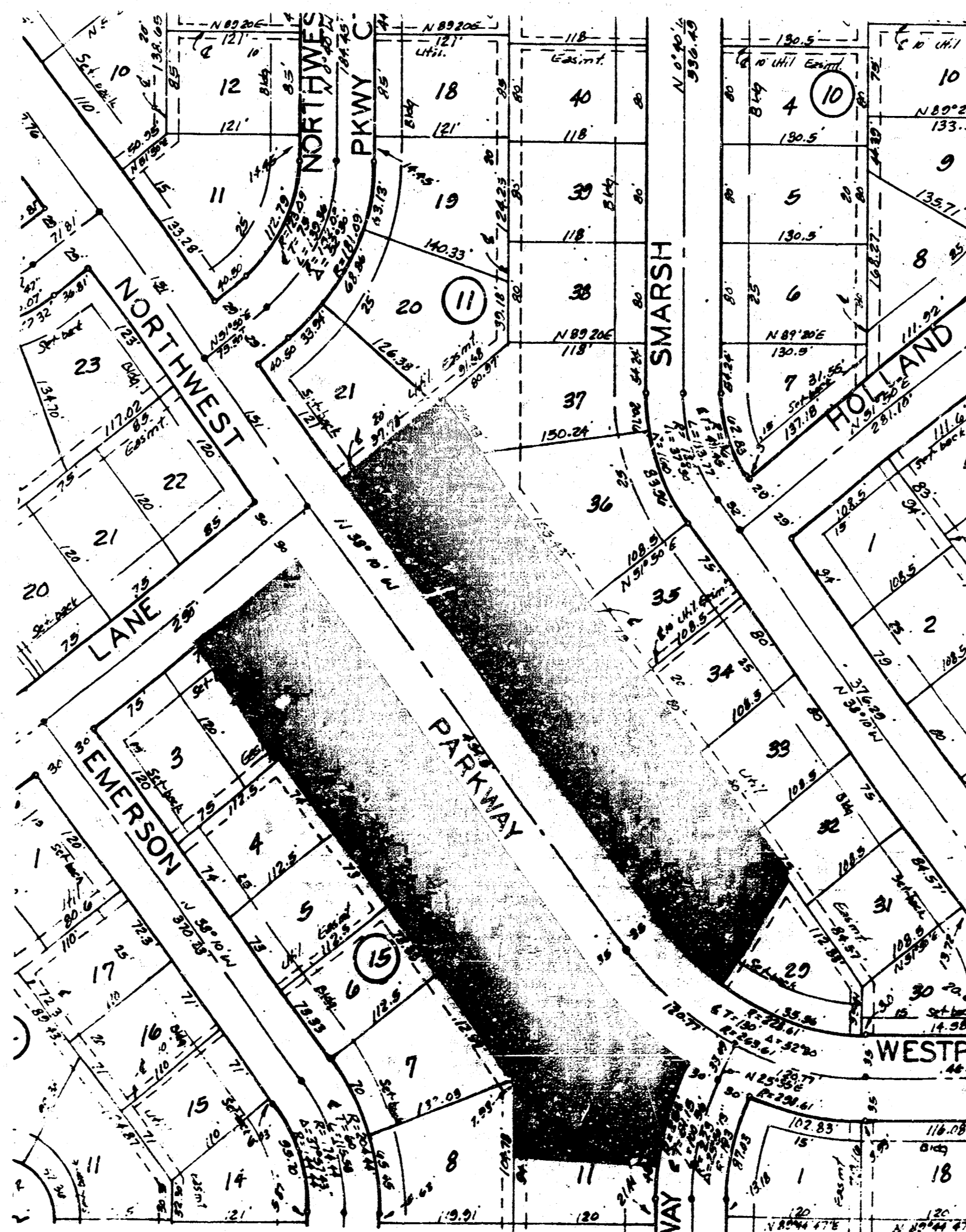
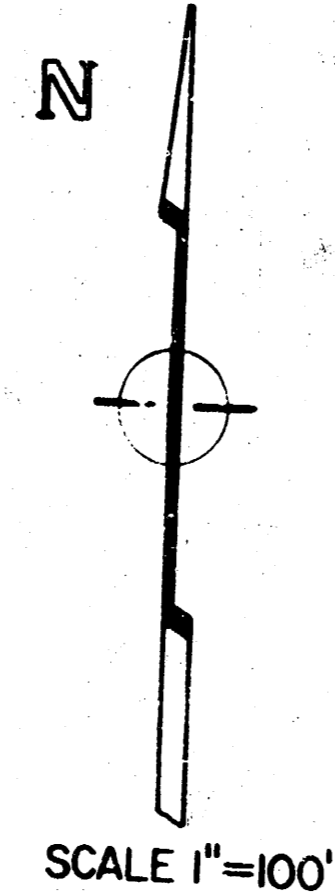
# STREET IMPROVEMENTS FOR NORTHWEST PARKWAY

FROM THE WESTERLY CORNER OF LOT 22, BLK. 11 AND THE SOUTH LINE OF HOLLAND LANE  
TO THE WESTERLY CORNER OF LOT 29, BLK. 11 AND THE EASTERLY CORNER OF LOT 12, BLK.  
15, ALL LOCATED IN WESTWOOD HEIGHTS SECOND ADDITION

PROJECT NUMBER  
472-76-245-81545-000-000-001

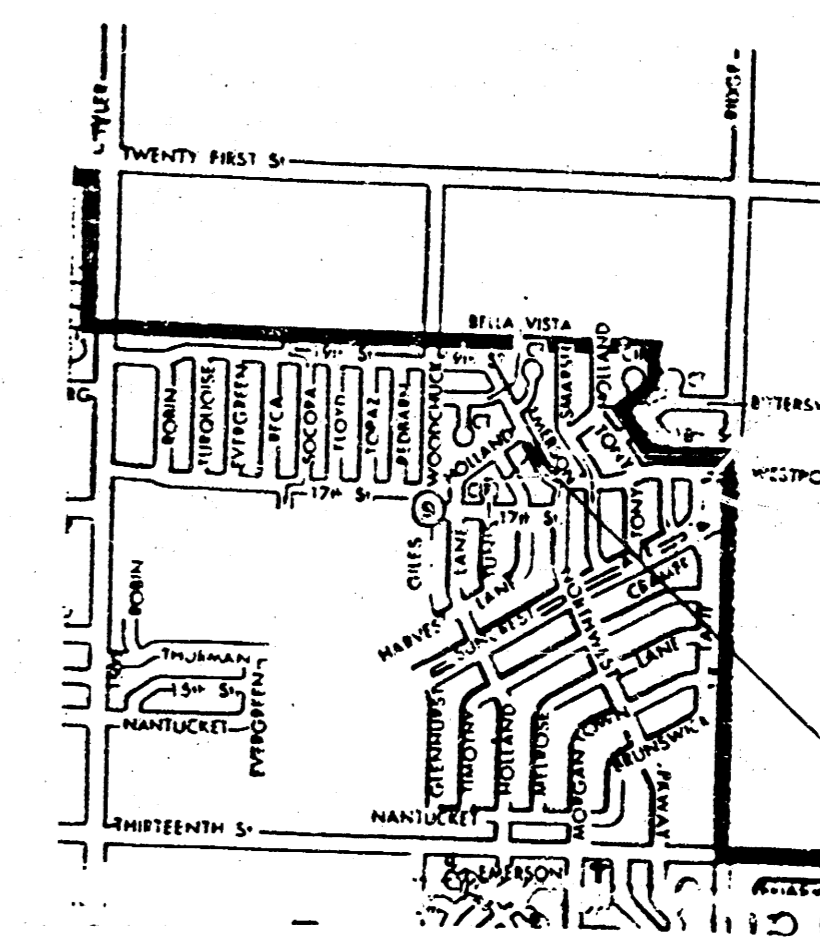
- INDEX
1. Title Sheet
  2. 37' Pavement Typical Section
  - 3-4. Northwest Parkway
  5. Earthwork Cross Sections

- GENERAL NOTES
1. The Contractor shall be responsible for preserving property irons. The Contractor will be required to re-establish any property irons which are damaged or destroyed by his construction operations. Such irons shall be re-established by a licensed land surveyor or a licensed professional engineer in accordance with state laws.
  2. Limits of earthwork shall match existing ground elevations at the right-of-way line unless otherwise noted on the plans with a new finished grade elevation. When a new finished grade elevation is shown, the earthwork shall extend one foot beyond the right-of-way line and then sloped up or down using permissible slopes to match the existing ground surface.
  3. No more than 5 drives 20 feet in width, or equivalent combinations thereof, are to be constructed with this project.
  4. The contractor shall adjust Water Valve Boxes and Fire Hydrants as directed by the Engineer at the price bid for said adjustments. The Water Department shall field locate water valves one time during construction when requested by the contractor. It shall be the contractor's responsibility to preserve such field locations during the construction process. water valves, water valve boxes or fire hydrants damaged during construction shall be repaired by the contractor at his own expense.

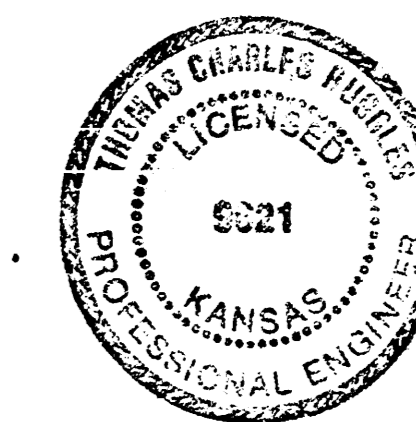


IMPROVEMENT DISTRICT

MICHAEL E. LINDEBAK  
CITY ENGINEER



PROJECT VICINITY

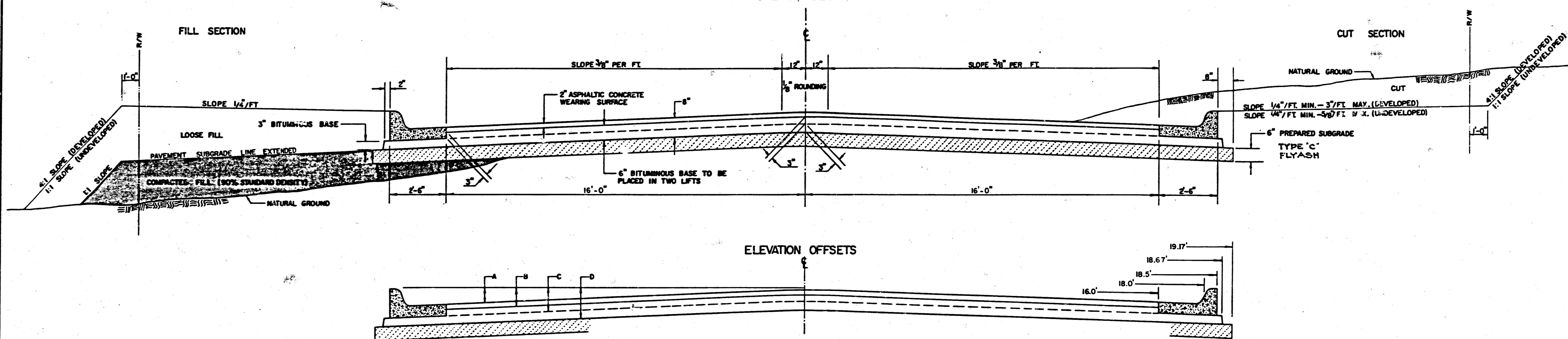


BAUGHMAN COMPANY, P.A.  
SURVEYING & ENGINEERING  
316-262-7271 • 330 LAURA • WICHITA, KANSAS 67211

JUNE 10, 1986  
1/5

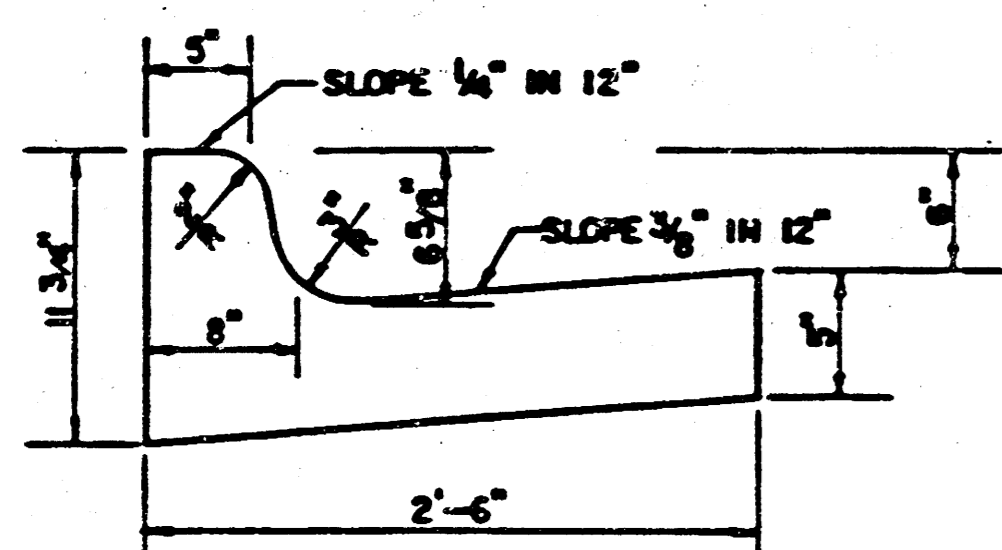
# TYPICAL 37' PAVEMENT DETAILS

## TRANSVERSE SECTION

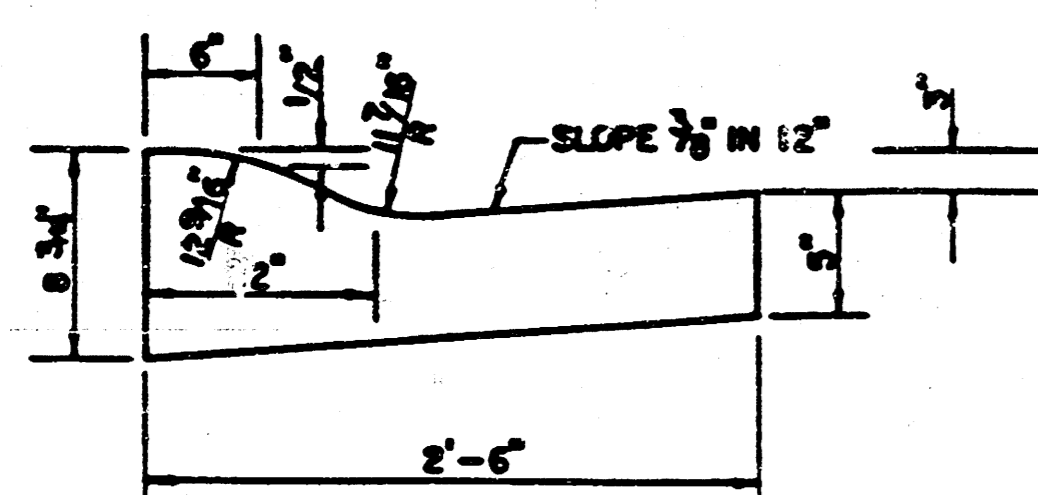


	DISTANCE FROM CENTERLINE (LT. & RT.)													
	0	2	4	6	8	10	12	14	16	18	18.5	18.67	19.17	
A: TOP OF CURBS TO TOP OF SURFACE LIFT	.01	.05	.11	.18	.24	.30	.36	.43	.49	—	—	—	—	
B: TOP OF CURBS TO TOP OF UPPER BASE LIFT	.17	.22	.28	.34	.40	.47	.53	.59	.65	—	—	—	—	
C: TOP OF CURBS TO TOP OF LOWER BASE LIFT	.42	.47	.53	.59	.65	.72	.78	.84	.90	.97	.98	.99	—	
D: TOP OF CURBS TO TOP OF SUBGRADE	.67	.72	.78	.84	.90	.97	1.03	1.09	1.15	1.22	1.23	1.24	1.25	

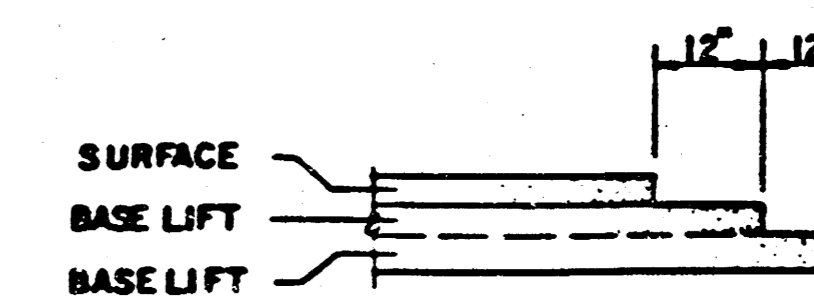
### COMBINED CURB & GUTTER



### ROLL TYPE COMBINED CURB & GUTTER



### TRANSVERSE CONSTRUCTION JOINTS



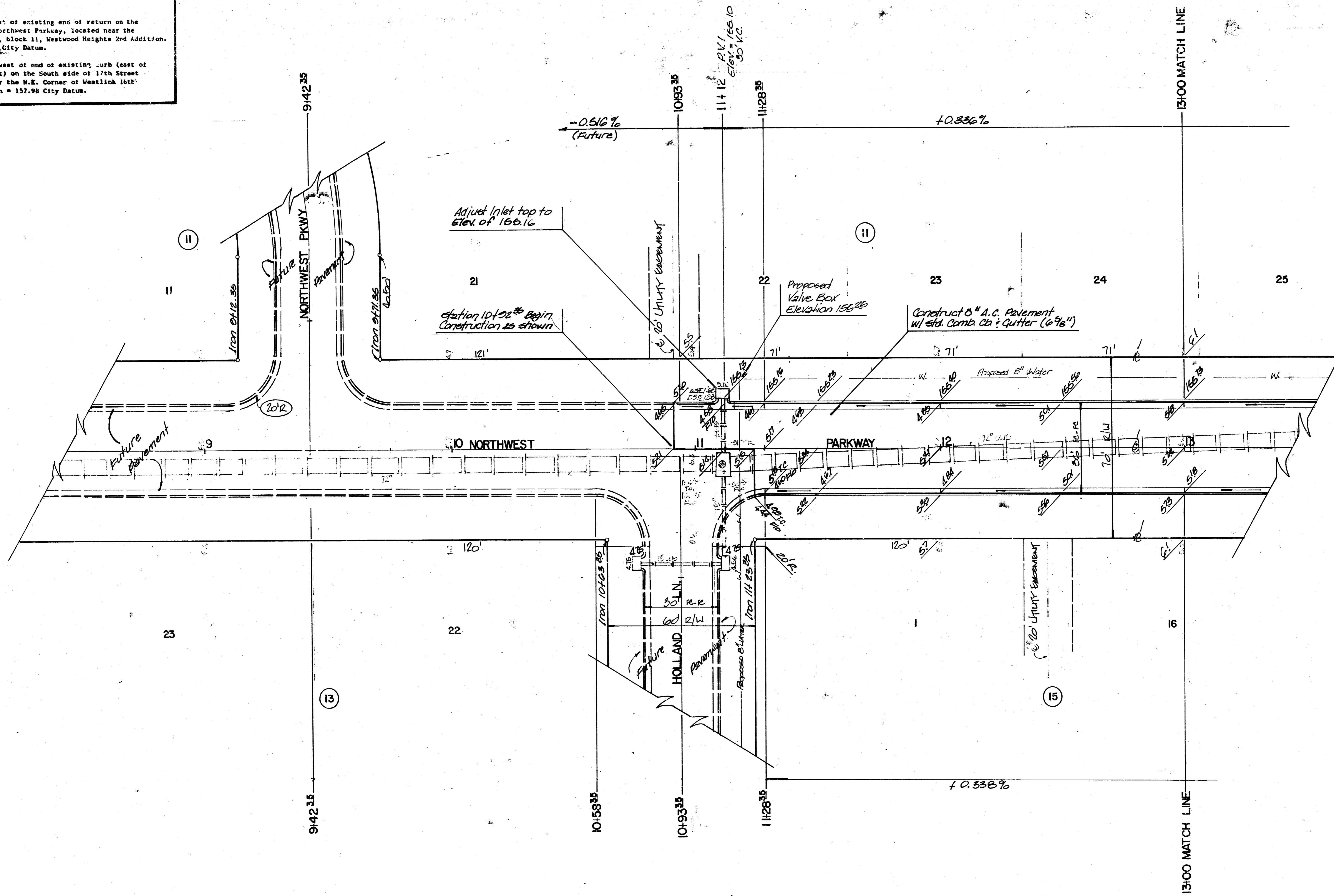
TRANSVERSE CONSTRUCTION JOINTS SHALL BE CONSTRUCTED IN FLEXIBLE BASE PAVEMENTS AT LOCATIONS WHERE PAVEMENT JOINS EXISTING FLEXIBLE BASE PAVEMENT AS SHOWN BY THE DETAIL. ALL COSTS ASSOCIATED WITH THE CONSTRUCTION OF THE TRANSVERSE JOINT SHALL BE INCLUDED IN THE BID PRICE FOR SQUARE YARDS 8" ASPHALTIC CONCRETE (6" BITUMINOUS BASE).

### GENERAL NOTES

- 1) THE ASPHALTIC CONCRETE PAVEMENT BETWEEN THE COMBINED CURB AND GUTTER SHALL BE PAID AS SQUARE YARDS OF 8" ASPHALTIC CONCRETE (6" BITUMINOUS BASE).
- 2) THE BITUMINOUS BASE UNDER AND BEHIND THE COMBINED CURB AND GUTTER SHALL BE PAID AS SQUARE YARDS OF 3" BITUMINOUS BASE.
- 3) A TACK COAT OF EMULSIFIED ASPHALT (SC-1H OR CSS-1H) SHALL BE APPLIED AT AN APPROXIMATE RATE OF 0.05 GALLONS PER SQUARE YARD BETWEEN EACH LIFT OF ASPHALTIC MATERIAL.
- 4) BITUMINOUS BASE AND ASPHALTIC CONCRETE WEARING SURFACE SHALL BE PLACED WITH A LAYDOWN MACHINE HAVING AUTOMATIC CONTROLS FOR LINE AND GRADE.
- 5) CONSTRUCTION JOINTS IN EACH LIFT SHALL BE STAGGERED A MINIMUM DISTANCE OF ONE (1) FOOT FROM JOINTS IN PRECEDING LIFTS AND PLACED SO THAT A JOINT WILL BE CONSTRUCTED ON THE CENTERLINE OF THE TOP LIFT.
- 6) CONTRACTOR TO BID ONLY ONE SUBGRADE TREATMENT ALTERNATE WHEN ALTERNATES ARE PROVIDED IN THE PROPOSAL AND CONTRACT. THE ALTERNATE CHOSEN BY THE SUCCESSFUL BIDDER SHALL BE USED IN CONSTRUCTING THIS PROJECT.

8 INCH RESIDENTIAL ASPHALTIC CONCRETE PAVEMENT WITH 6 INCH BITUMINOUS BASE 2/15  
 CITY OF WICHITA, KANSAS  
 PROJECT NUMBER 472-76-245-81545-000-000-001 2/6

- Bench Marks**
- 1) □ Cut 2 feet east of existing end of return on the northerly side of Northwest Parkway, located near the west end of lot 29, block 11, Westwood Heights 2nd Addition. Elevation = 134.82 City Datum.
  - 2) □ Cut 5.5 feet west of end of existing curb (east of existing curb inlet) on the South side of 17th Street North, located near the N.E. Corner of Westlink 16th Addition. Elevation = 157.98 City Datum.



**EARTHWORK QUANTITIES**

EXCAVATION	SUBGRADE MANIPULATION
2222	2264.0
CUBIC YARDS	SQUARE YARDS

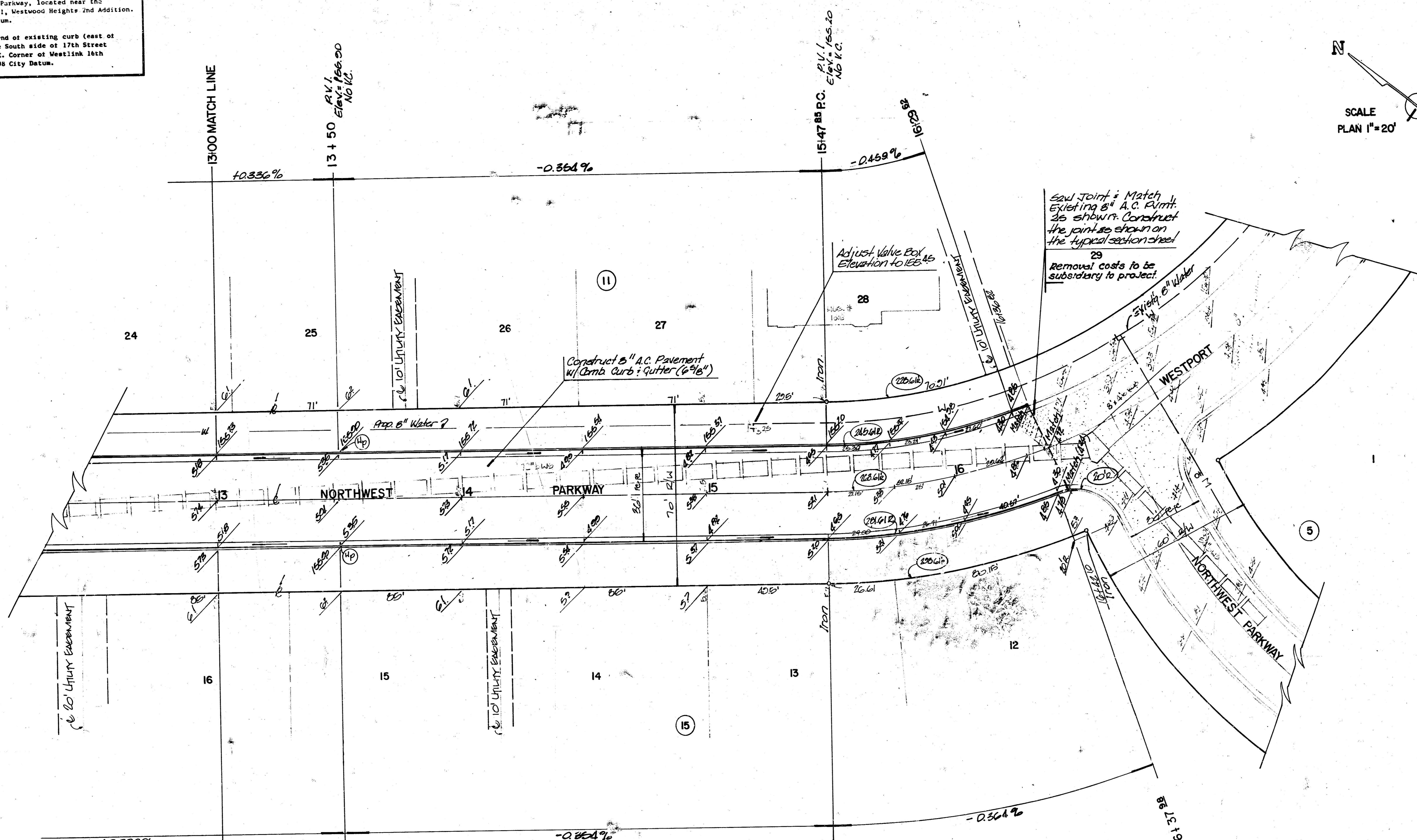
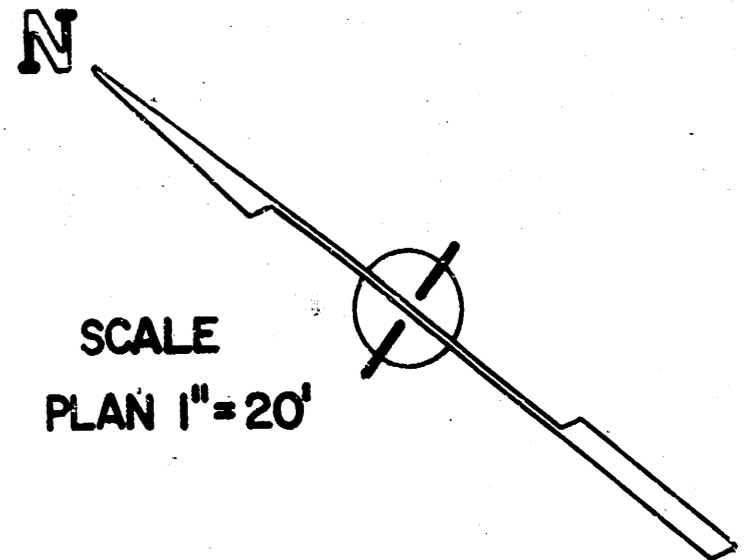
**NORTHWEST PARKWAY** <sup>3/5</sup>

472-76-245-81545-000-000-031

3/5

**Bench Marks**

- 1)  Cut 2 feet east of existing end of return on the northern side of Northwest Parkway, located near the west end of lot 29, block 11, Westwood Heights 2nd Addition. Elevation = 154.82 City Datum.
- 2)  Cut 5.5 feet west of end of existing curb (east of existing curb inlet) on the South side of 17th Street North, located near the N.E. Corner of Westlink 16th Addition. Elevation = 157.98 City Datum.



Curve Data Based on Center Line

R=263.61' Δ=62°53'00" Tang=130' Arc=241.56' LC=233.16' ΔP/P1=0.1066°

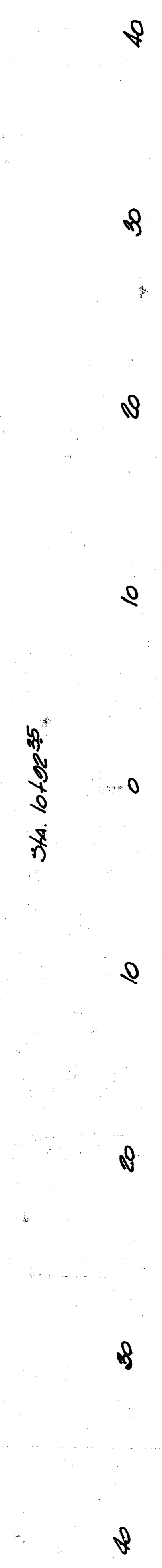
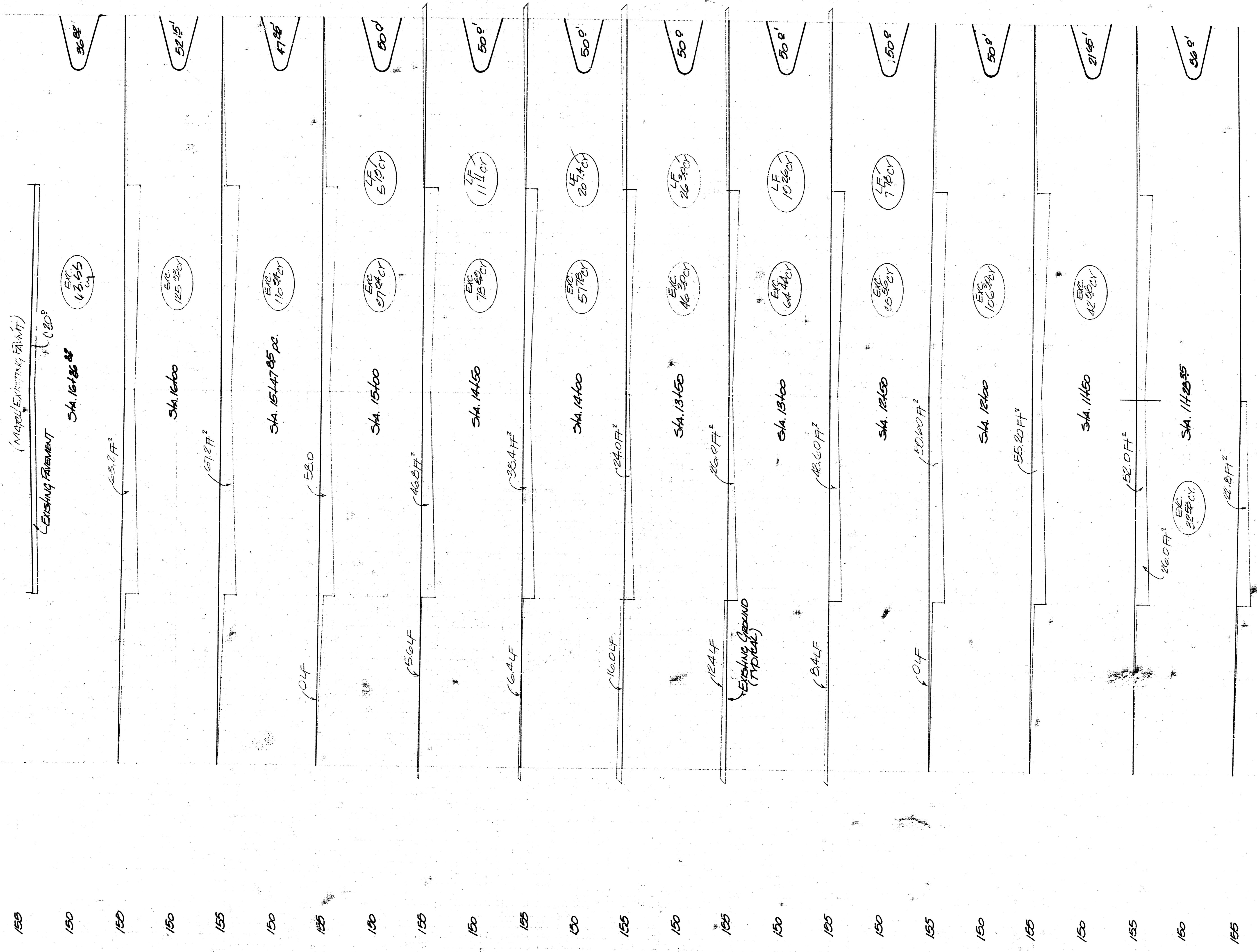
Station	Arc	Chord	Lengths	Def.	Total Def.
		old (Face)	El (Face)		
15147.85	—	—	—	—	—
15175	27.15	21.46	29.82	2°57'02"	2°57'02"
16100	25.00	22.53	27.45	2°43'02"	5°40'04"
16125	25.00	22.53	27.45	2°42'50"	8°23'03"
16129.82	4.62	4.16	—	0°30'06"	8°53'11"
16136.82	7.20	6.40	—	0°46'57"	9°40'08"
16137.88	1.16	—	14.26	0°07'34"	9°47'42"
16142.10	4.12	—	4.53	0°26'52"	10°14'34"

**NORTHWEST PARKWAY**

472-78-245-81545-000-001

3/5

EARTHWORK QUANTITIES  
NORTHWEST PARKWAY



EARTHWORK QUANTITIES  
EXCAVATION: 922.24  
LOOSE FILL: 90.51

NORTHWEST PARKWAY  
WESTWOOD HEIGHTS END

472-76-245-81545-000-000-001

EARTHWORK CROSS SECTIONS  
NORTHWEST PARKWAY