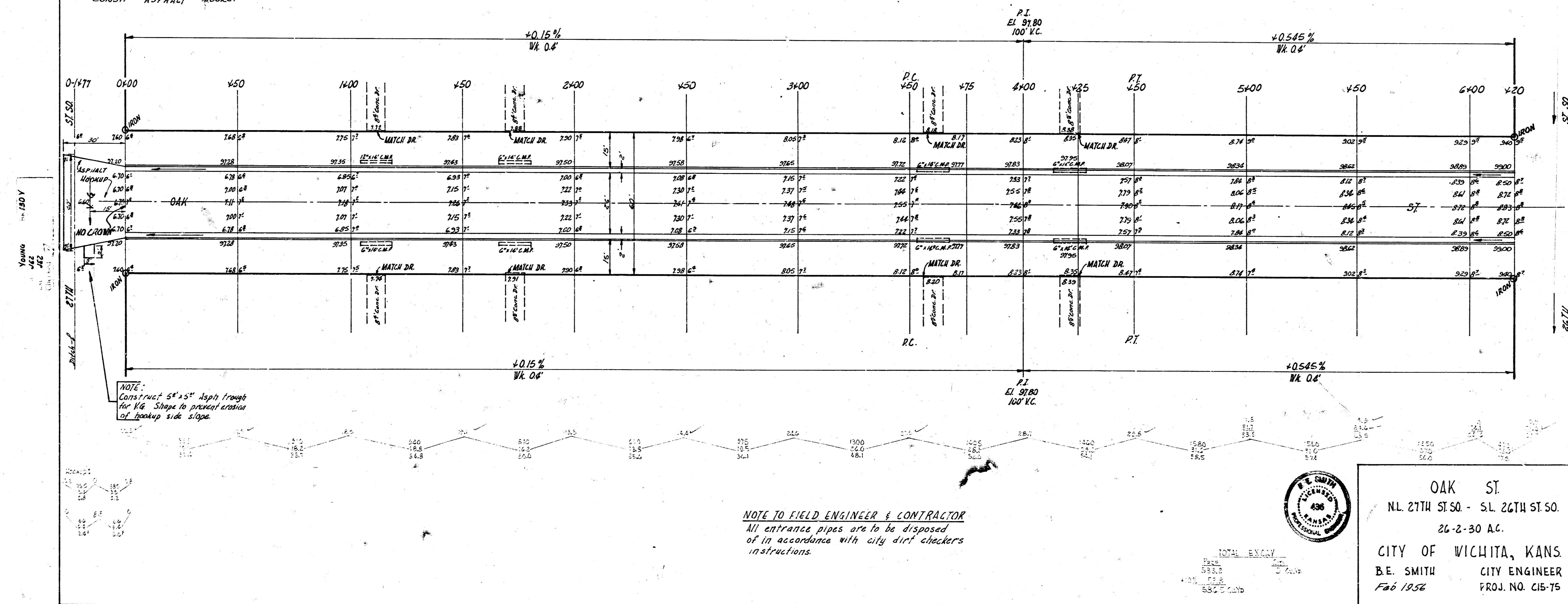


B.M. 98.725 S.W. Cor. 1st Cons. Step No #2752 So. Oak

Sta. on 6

NOTE:
CONST. ASPHALT HOODUP



NOTE:
Construct 5' x 5' Asphalt Trough
for 1/2" Slope to prevent erosion
of hoodup side slope.

NOTE TO FIELD ENGINEER & CONTRACTOR
All entrance pipes are to be disposed
of in accordance with city dirt checkers
instructions.



OAK ST.
N.L. 27TH ST. SO. - S.L. 26TH ST. SO.
26-2-30 A.C.
CITY OF WICHITA, KANS.
B.E. SMITH CITY ENGINEER
Feb 1956 PROJ. NO. C15-75

TOTAL EXCAV.
1940
5830
7770
CUBIC YARDS