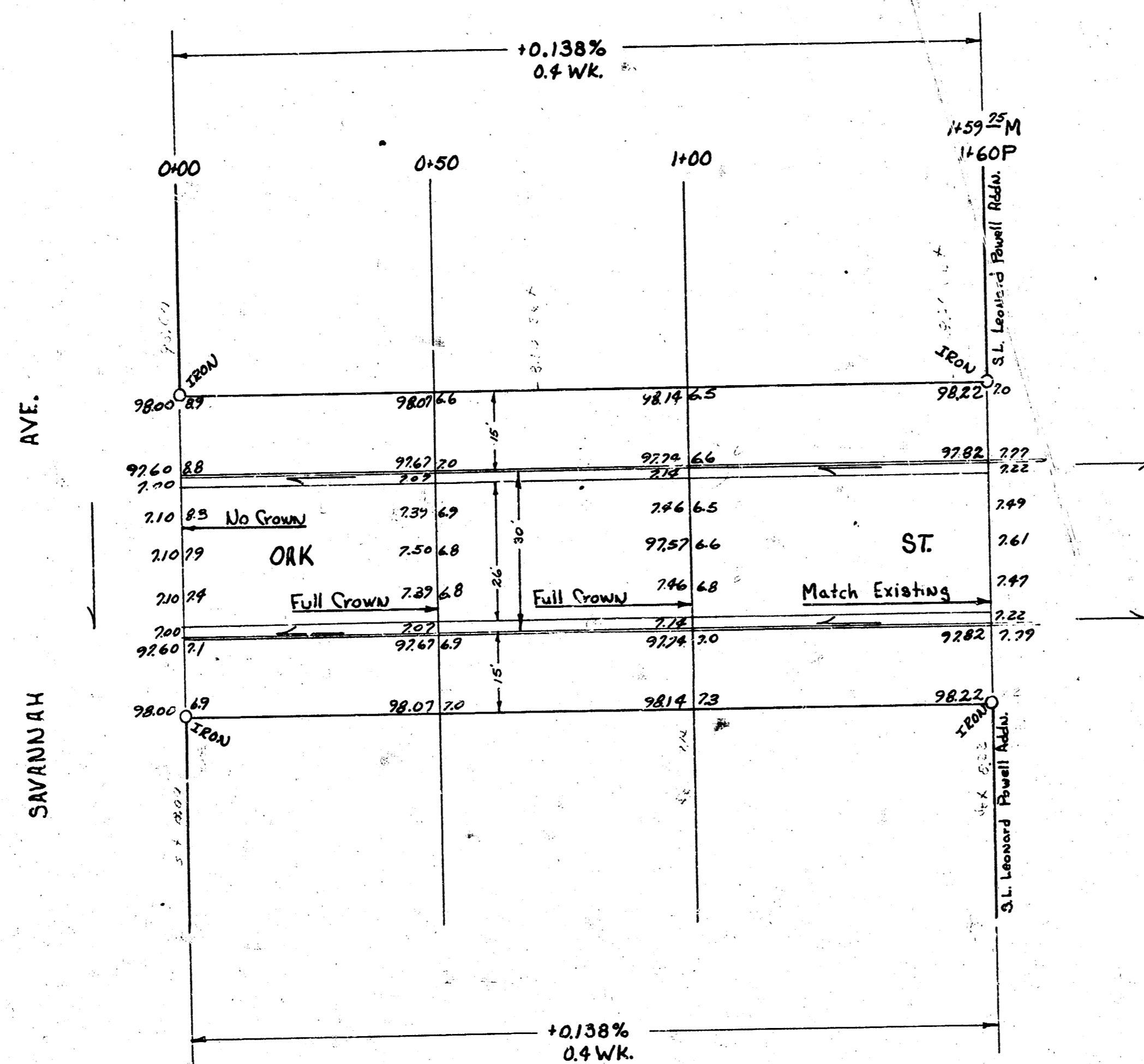
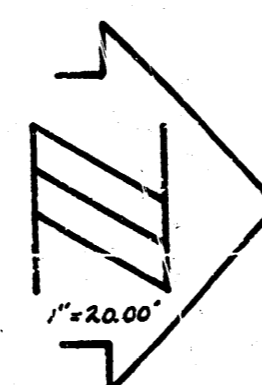


BM 28.0 G in Globe E. end Ma. rd., Savannah @ E.L. Osage

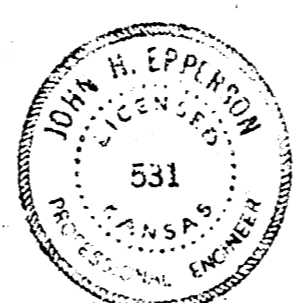


PROPERTY EARTHWORK TOTALS

5.0	96.2 Cu. Yds Cut	2.8	9.8 Cu. Yds Fill
10%	7.0	10%	6.7
	97.2 Cu. Yds Cut		10.2 Cu. Yds Fill

E.L. Osage
 L.H. Swickard
 City Engineer

127 C
 132 C
 133 C
 140 C
 141 C
 142 C
 143 C
 144 C
 145 C
 146 C
 147 C
 148 C
 149 C
 150 C
 151 C
 152 C
 153 C
 154 C
 155 C
 156 C
 157 C
 158 C
 159 C
 160 C
 161 C
 162 C
 163 C
 164 C
 165 C
 166 C
 167 C
 168 C
 169 C
 170 C
 171 C
 172 C
 173 C
 174 C
 175 C
 176 C
 177 C
 178 C
 179 C
 180 C
 181 C
 182 C
 183 C
 184 C
 185 C
 186 C
 187 C
 188 C
 189 C
 190 C
 191 C
 192 C
 193 C
 194 C
 195 C
 196 C
 197 C
 198 C
 199 C
 200 C



OAK ST.
 N.L. SAVANNAH ~ 160' N.L. SAVANNAH
 26-2 30 A.C.
CITY OF WICHITA, KANSAS
 B.E. SMITH CITY ENGINEER
 DATE: Dec. 1958, PROJ. NO. C15-95