

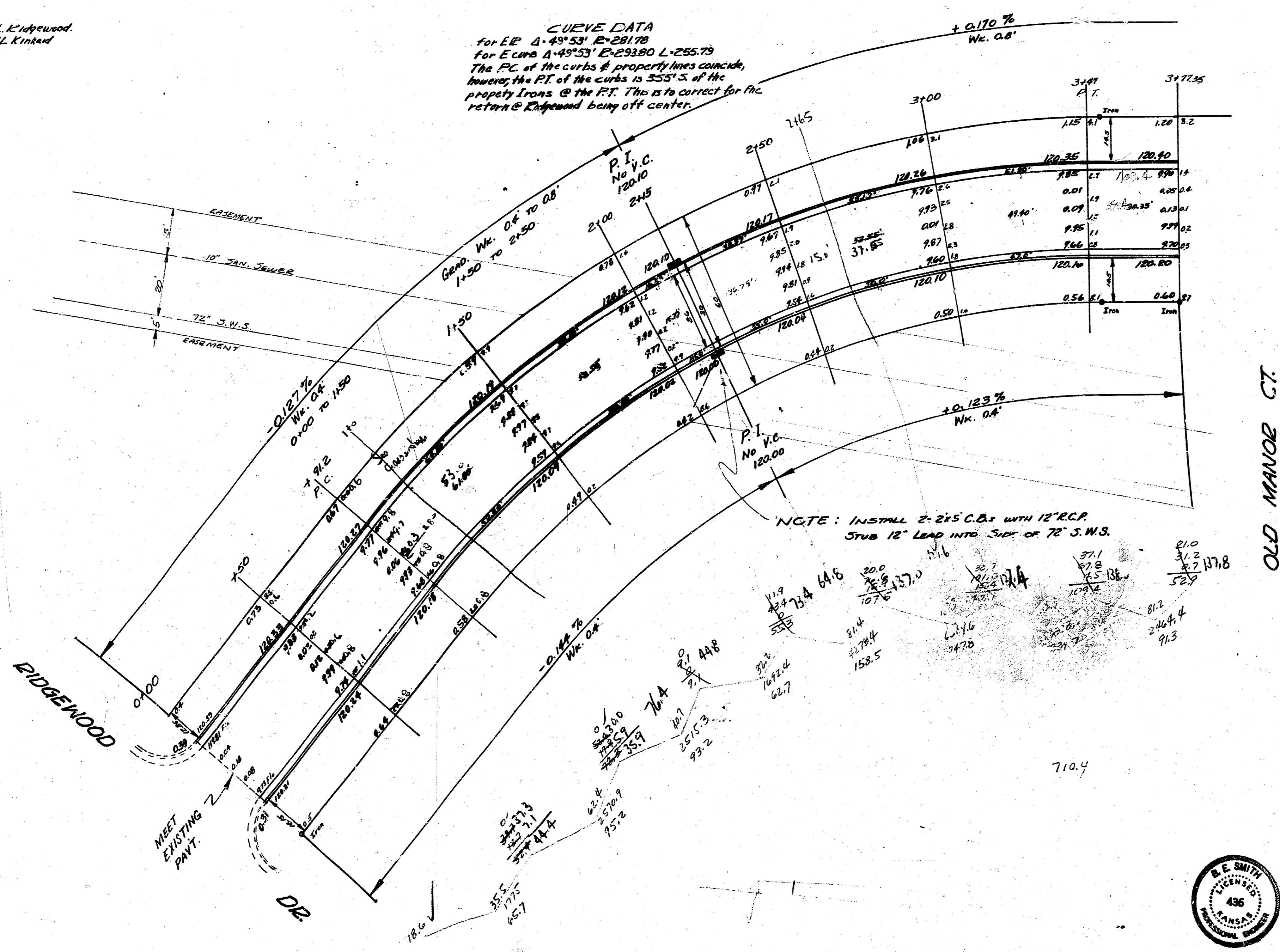
B.M. 11972 'E' in E. side S. curb Pinecrest, N.L. Ridgewood
 B.M. 12439 'G' in Globe E. curb Old Manor, N.L. Kinraid

Stations on face of E. curb.

CURVE DATA
 for E.E. $\Delta 49^{\circ}53'$ $E=281.78$
 for E. curb $\Delta 49^{\circ}53'$ $E=293.80$ $L=255.73$
 The P.C. of the curbs & property lines coincide,
 however, the P.T. of the curbs is 555' S of the
 property lines @ the P.T. This is to correct for the
 return to Ridgewood being off center.

Exc.

Prop	City
3554.2	94.7
419.9%	12.8
2809.6 as 10%	24.2



OLD MANOR CT.

NOTE: INSTALL 2-2 1/2" C.B. WITH 12" R.C.P. SUB 12" LEAD INTO SIDE OF 72" S.W.S.



OLD MANOR ROAD
 N.L. RIDGEWOOD TO S.L. KINRAID
 26'-2'-30 AC.
CITY OF WICHITA, KANS.
 B.E. SMITH
 DEC 1902
 CITY ENGINEER
 Proj. No. C12-68



1/2

Surveyor
 B.E. SMITH
 No. 436
 State of Kansas

