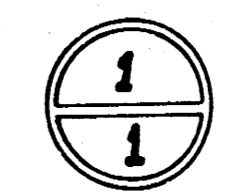
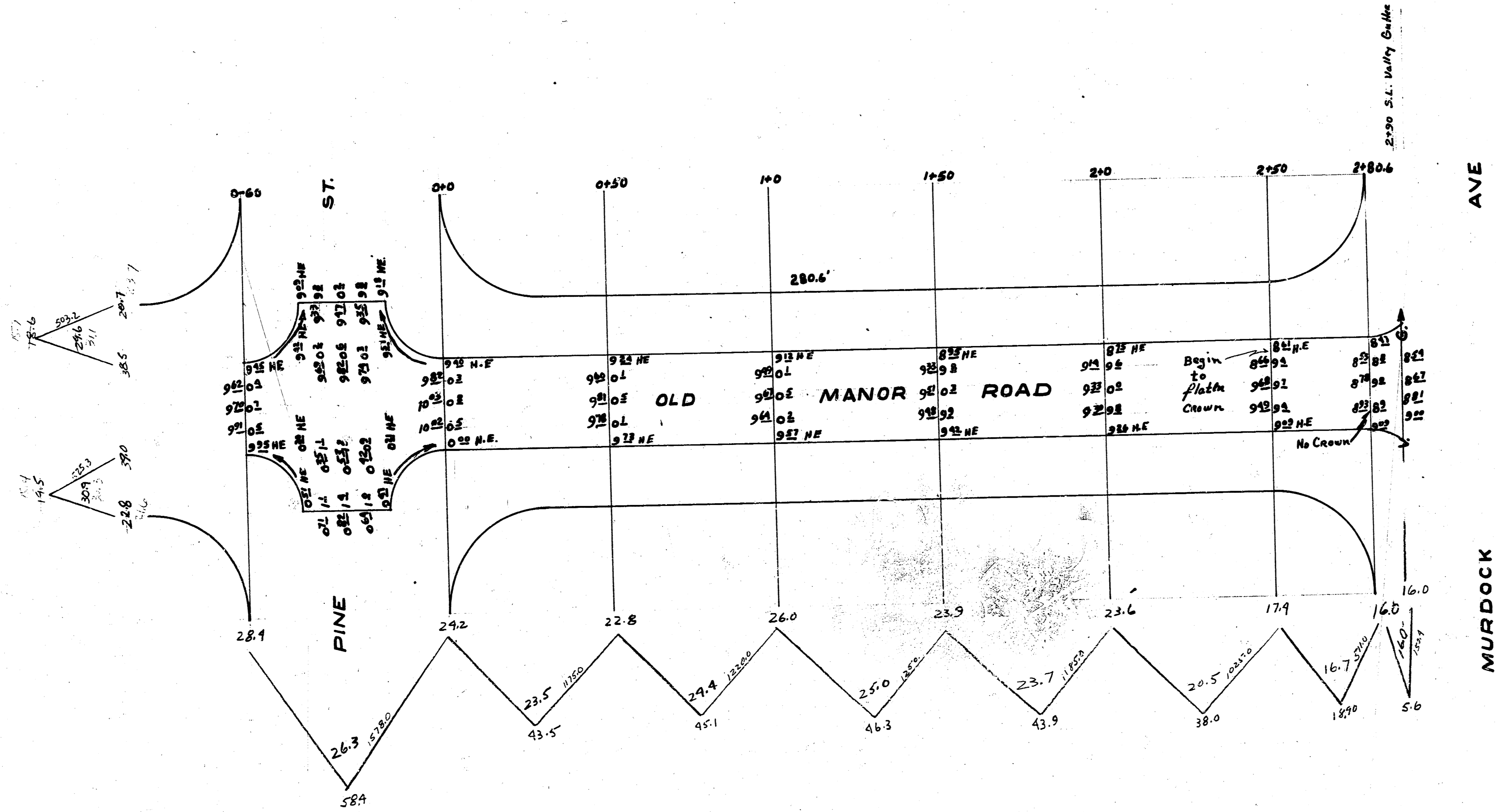
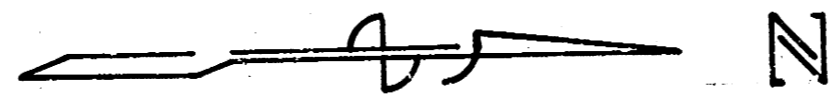


1. See in  
"Book 71"

B.M. 203 1/2 in Top hyd. N.E. cor. Old Manor & Pine  
B.M. 199 1/2 in Top of E. cor. Old Manor & S.L. Murdock



**OLD MANOR**  
S.L. MURDOCK to N.L. PINE  
26' CONC.  
CITY of WICHITA, KANSAS  
L.K. WHITE CITY ENGINEER  
JULY 1947