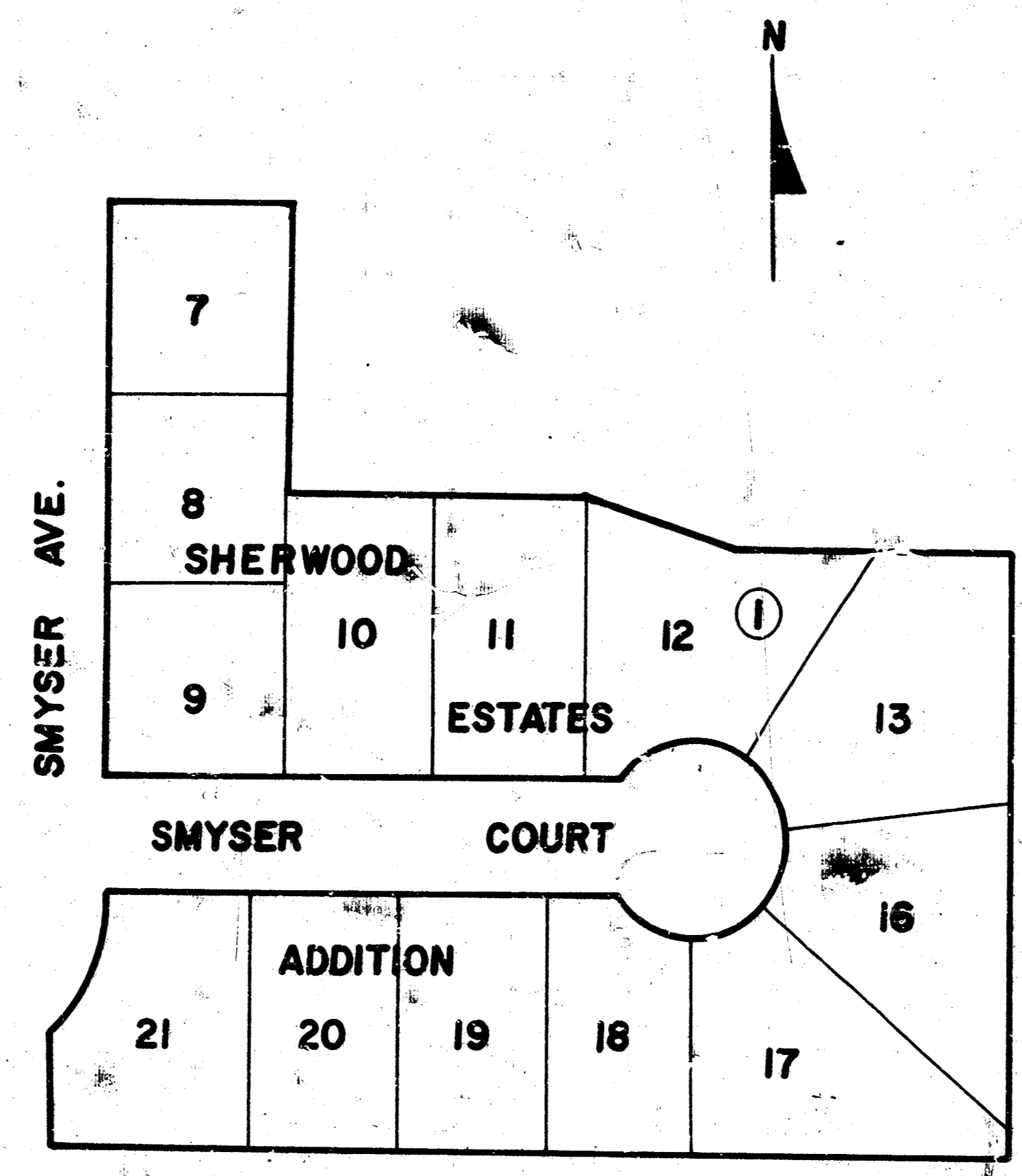


SMYSER COURT

E.L. SMYSER AVE. TO & INCL. CUL-DE-SAC



GENERAL NOTES

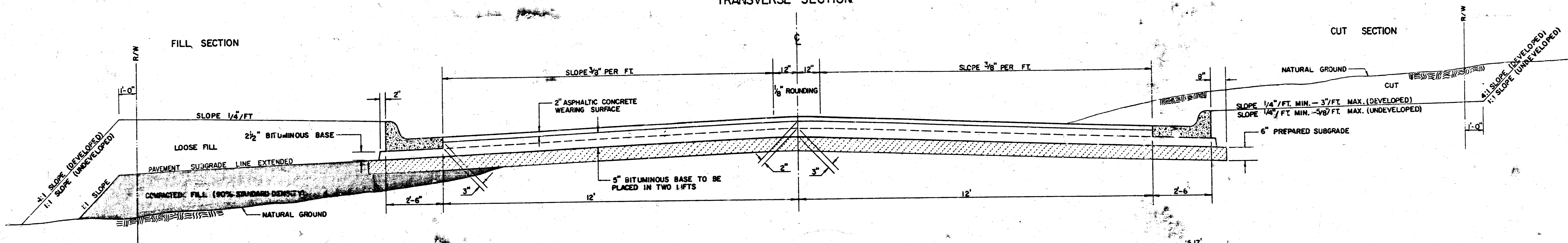
- (1) WIDENED CUTTER SECTION OF COMBINED CURB AND CUTTER AT INTERSECTIONS WILL NOT BE PAID FOR DIRECTLY, AND THIS COST SHALL BE CONSIDERED AS SUBSIDIARY TO THE OTHER EAY ITEMS OF WORK.
- (2) TREE REMOVAL SHALL BE DETERMINED BY THE ENGINEER. NO TREE SHALL BE REMOVED WITHOUT THE APPROVAL OF THE ENGINEER.



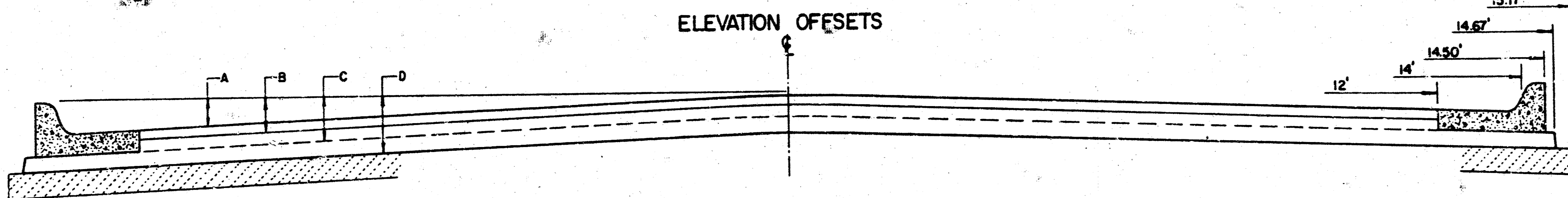
PROJECT NO. 472-76-245-80976-000-000-001
 CITY OF WICHITA
 M. E. LINDEBAK CITY ENGINEER
 LANDCO ENGINEERING CONSULTANT ENGINEER
 Book 2MN Drawn by RH Date 11/83

TYPICAL 29' PAVEMENT DETAILS

TRANSVERSE SECTION

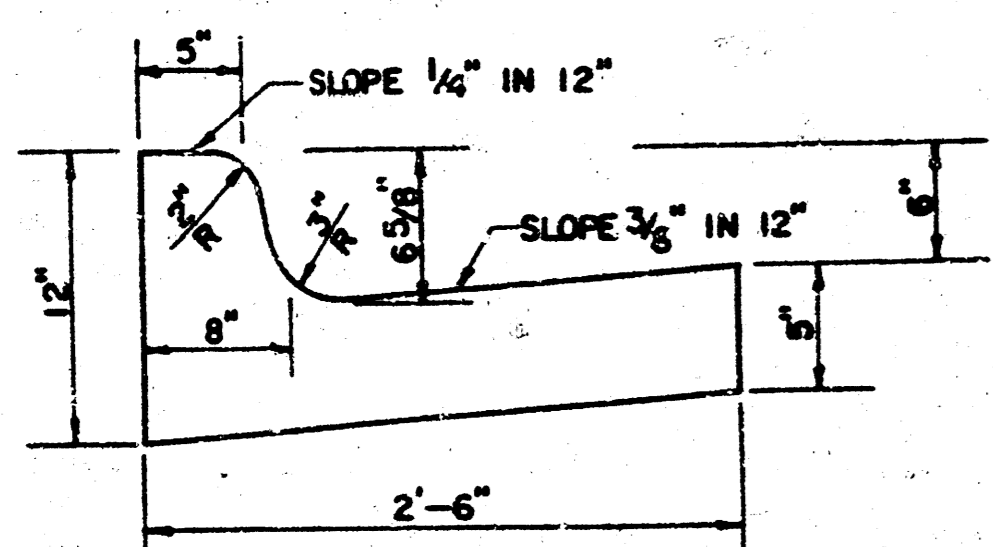


ELEVATION OFFSETS

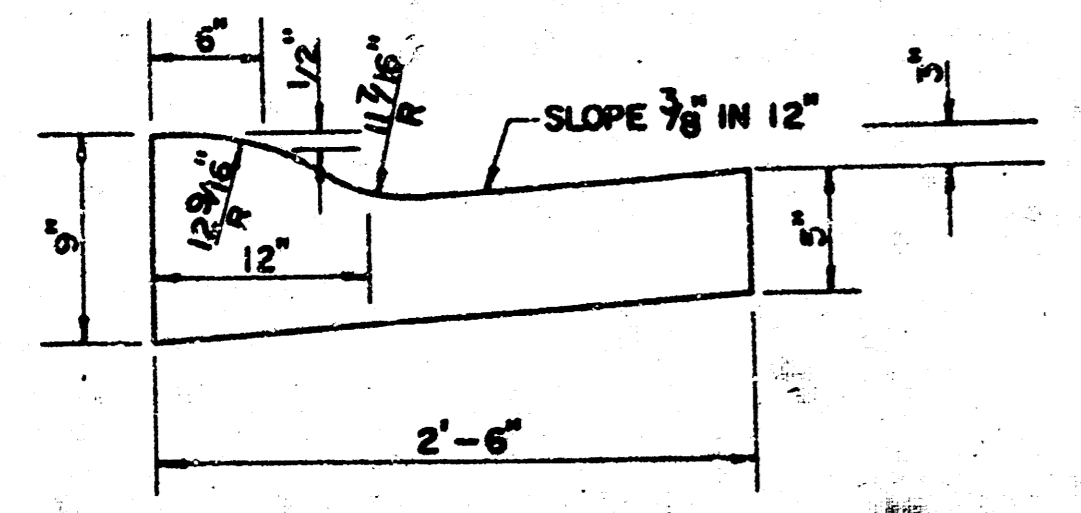


	DISTANCE FROM CENTERLINE (LT. & RT.)												
	0'	2'	4'	6'	7'	8'	10'	12'	14'	14.5'	14.67'	15.17'	
A: TOP OF CURBS TO TOP OF SURFACE LIFT	0.13	0.14	0.24	0.30	0.33	0.36	0.43	0.49	—	—	—	—	
B: TOP OF CURBS TO TOP OF UPPER BASE LIFT	0.30	0.35	0.41	0.47	0.50	0.53	0.60	0.66	—	—	—	—	
C: TOP OF CURBS TO TOP OF LOWER BASE LIFT	0.47	0.52	0.60	0.68	0.71	0.75	0.83	0.90	0.98	1.00	1.01	—	
D: TOP OF CURBS TO TOP OF SUBGRADE	0.72	0.77	0.84	0.91	0.94	0.98	1.05	1.12	1.19	1.21	1.21	1.23	

COMBINED CURB & GUTTER



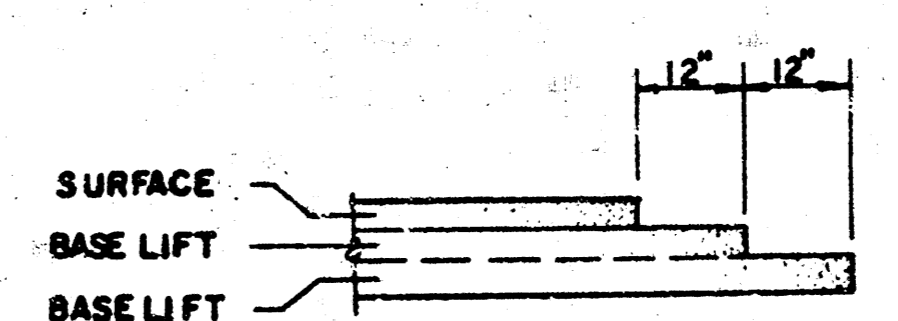
ROLL TYPE COMBINED CURB & GUTTER



GENERAL NOTES

- 1) THE ASPHALTIC CONCRETE PAVEMENT BETWEEN THE COMBINED CURB AND GUTTER SHALL BE PAID AS SQUARE YARDS OF 7" ASPHALTIC CONCRETE (5" BITUMINOUS BASE).
- 2) THE BITUMINOUS BASE UNDER AND BEHIND THE COMBINED CURB AND GUTTER SHALL BE PAID AS SQUARE YARDS OF 2 1/2" BITUMINOUS BASE.
- 3) A TACK COAT OF EMULSIFIED ASPHALT (EM-1H OR CSS-1H) SHALL BE APPLIED AT AN APPROXIMATE RATE OF 0.5 GALLONS PER SQUARE YARD BETWEEN EACH LIFT OF ASPHALTIC MATERIAL.
- 4) BITUMINOUS BASE AND ASPHALTIC CONCRETE WEARING SURFACE SHALL BE PLACED WITH A LAYDOWN MACHINE HAVING AUTOMATIC CONTROLS FOR LINE AND GRADE.
- 5) CONSTRUCTION JOINTS IN EACH LIFT SHALL BE STAGGERED A MINIMUM DISTANCE OF ONE (1) FOOT FROM JOINTS IN PRECEDING LIFTS AND PLACED SO THAT A JOINT WILL BE CONSTRUCTED ON THE CENTERLINE OF THE TOP LIFT.
- 6) CONTRACTOR TO BID ONLY ONE SUBGRADE TREATMENT ALTERNATE WHEN ALTERNATES ARE PROVIDED IN THE PROPOSAL AND CONTRACT. THE ALTERNATE CHOSEN BY THE SUCCESSFUL BIDDER SHALL BE USED IN CONSTRUCTING THIS PROJECT.

TRANSVERSE CONSTRUCTION JOINTS

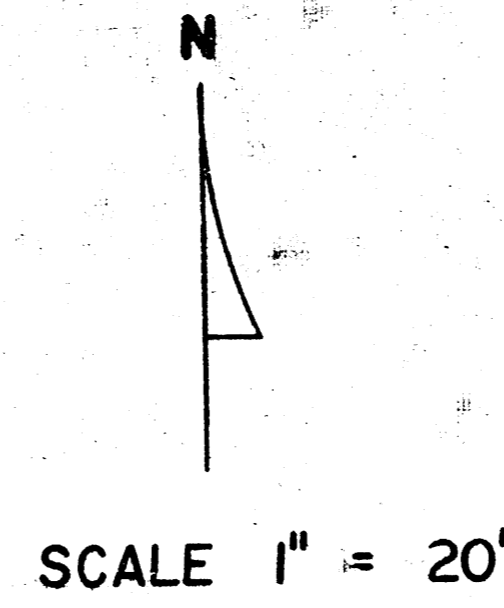


Transverse Construction Joints Shall Be Constructed In Flexible Base Pavements At Locations Where Pavement Joins Existing Flexible Base Pavement As Shown By The Detail. All Costs Associated With The Construction Of The Transverse Joint Shall Be Included In The Bid Price For Square Yards 7" Asphaltic Concrete (5" Bituminous Base)

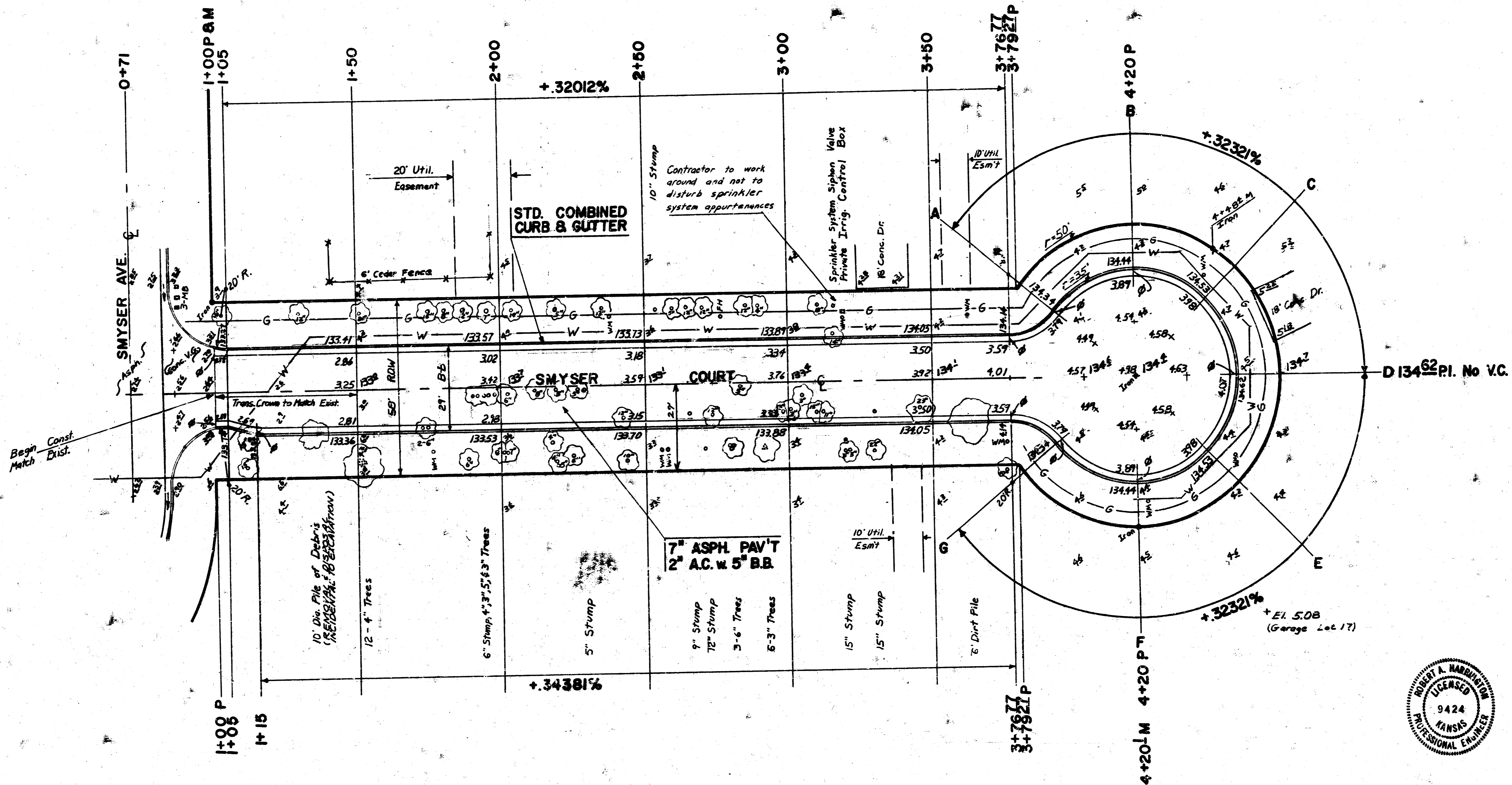
7 INCH RESIDENTIAL ASPHALTIC CONCRETE PAVEMENT WITH 5 INCH BITUMINOUS BASE
 CITY OF WICHITA, KANSAS
 PROJECT NUMBER
 472-76-245-80976-000-000-001

B.M. 132.90 "a" Cut on TC, S-end Return SE. corner Smyser Ave. & Smyser Ct.

TRG REMOVE
WIDENED GUTTER SECTION



3/4



LEGEND

⚡ DENOTES EXPANSION JOINT IN COMBINED CURB AND GUTTER

ACTUAL MANIPULATION 1147.8 S.Y.

ACTUAL EXCAVATION 438.9 C.Y.

+10% 43.9 C.Y.

TOTAL 482.8 C.Y.

SMYSER COURT
E.L. SMYSER AVE. TO & INCL. CUL-DE-SAC
PROJECT NO. 472-76-245-80976-000-000-001
CITY OF WICHITA
M. E. LINDEBAK CITY ENGINEER
LANDCO ENGINEERING CONSULTANT ENGINEER
Book 2MN Drawn by RH Date 11/83

3/4

