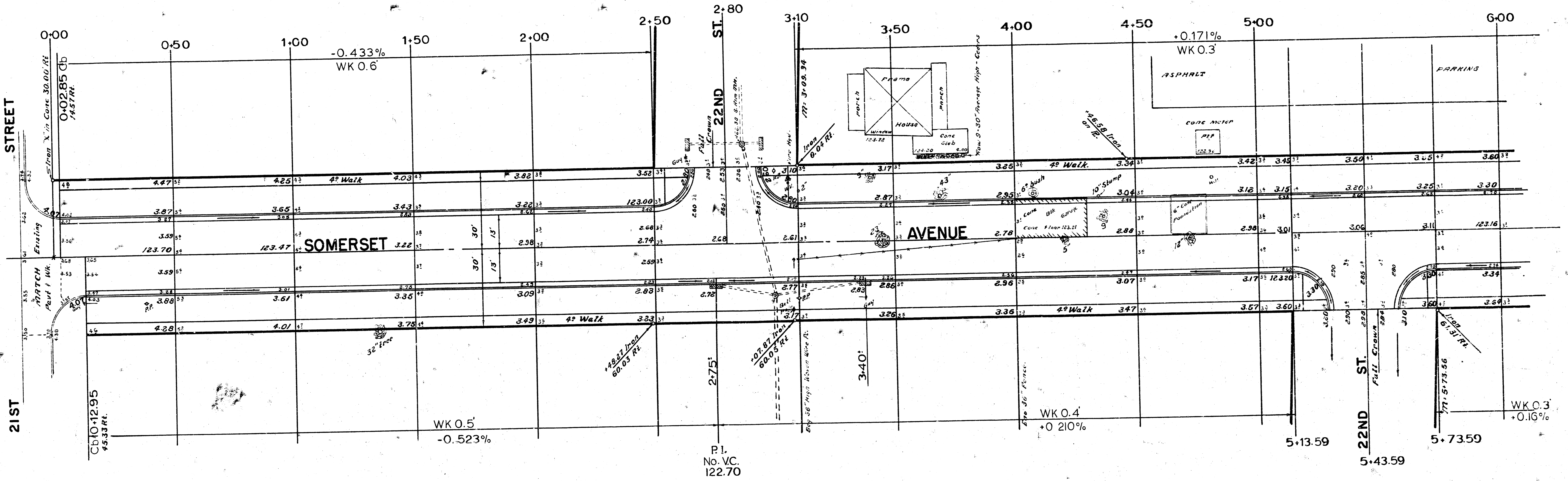
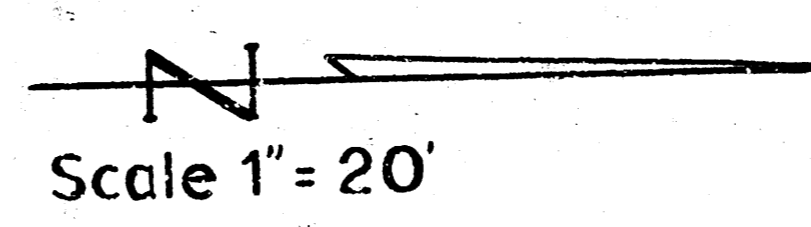


126.83  
 1700' Elev Church  
 133.0' to Ft.

B.M.: 124.32 'X' Cut Top Cb. at W. End Rad. on N.W. Cor. Somerset & 21<sup>st</sup> St.  
 B.M.: 127.46 'D' in Top Conc Base for Light Pole. 70' E. of E. End Little Arkansas Bridge on 21<sup>st</sup> St.  
 B.M.: 123.30 R.R. Spike W.S.P. Pole on N.W. Cor. Somerset & 22<sup>nd</sup> St. West.  
 B.M.: 124.82 N.W. Cor. Conc. Parch Ho# 2334 Somerset.

Base Line is on W.L. 0+00 to 5+73.59



PROPERTY		CITY	
Excavation	Comp Fill	Excavation	Comp Fill
1,036.9 Cu Yds	424.6 449.7 Cu Yds	148.2 Cu Yds	148.2 Cu Yds
+10% 103.7	+10% 45.0	+10% 14.2	+10% 14.2
Total 1,140.6 Cu Yds	Total 494.7 Cu Yds	Total 156.4 Cu Yds	Total 156.4 Cu Yds

**SOMERSET AVENUE**  
 N.L. 21st ST. to S.L. 23rd Street  
**26'-2'-30' ASPHALTIC-CONC**  
 City of Wichita, Kansas  
 B.E. Smith City Engineer  
 Date: JUNE 1966 Proj No. C16-26

