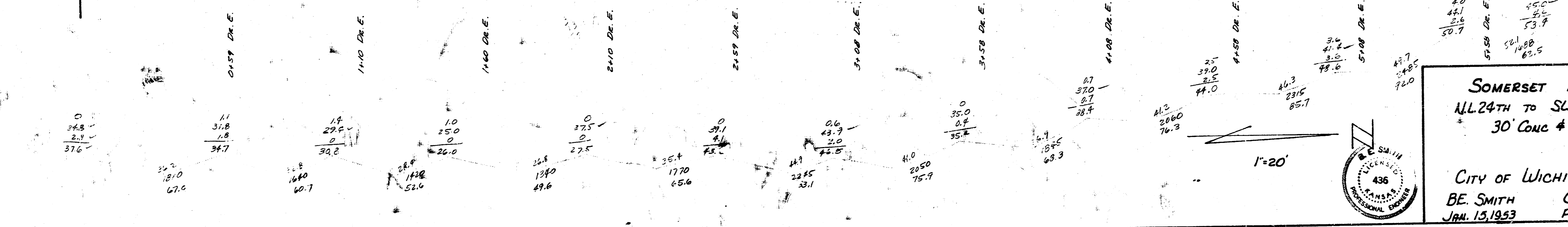
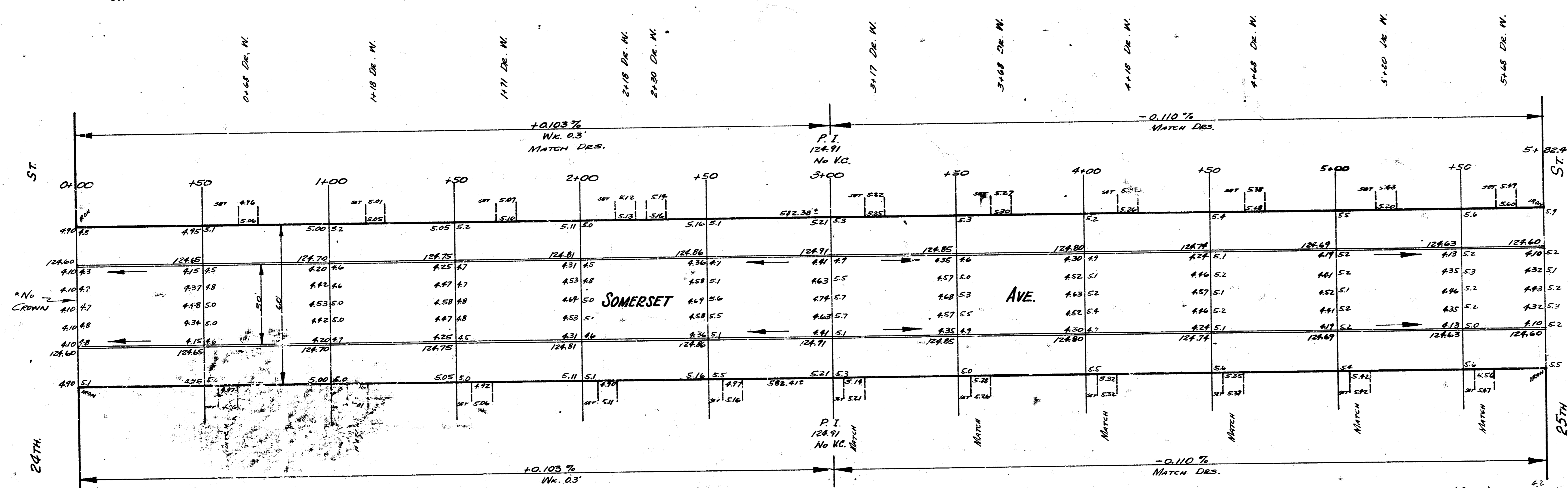


B.M. 126.88 S.W. COR. CONC. PAVCH No. 2502 SOMERSET
 B.M. 127.75 N.W. COR. CONC. PAVCH No. 2560 SE. SOMERSET & 25TH

Exc. City
 537.9
 102.2
 70.22 41.45

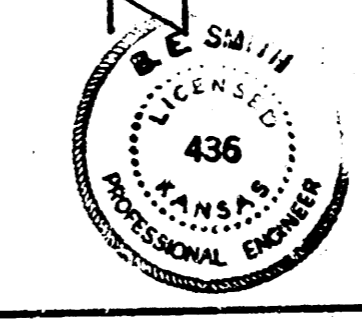
TIES TO N.E. IRON:
 36.10' E.N.E. TO S.W. COR. HO.
 57.60' N.E. TO N.W. COR. LOWER STEP

TIES: S.E. IRON
 22.9' S. TO N.W. COR. DR.
 43.0' S.E. TO N.W. COR. HO.



SOMERSET AVE
 ALL 24TH TO SL 25TH
 30' CONC & C.B.

CITY OF WICHITA, KANSAS
 BE. SMITH CITY ENGINEER
 JAN. 13, 1953 PROJ. No. C12-101



REVISIONS
 1. 11/10/52
 2. 11/10/52
 3. 11/10/52