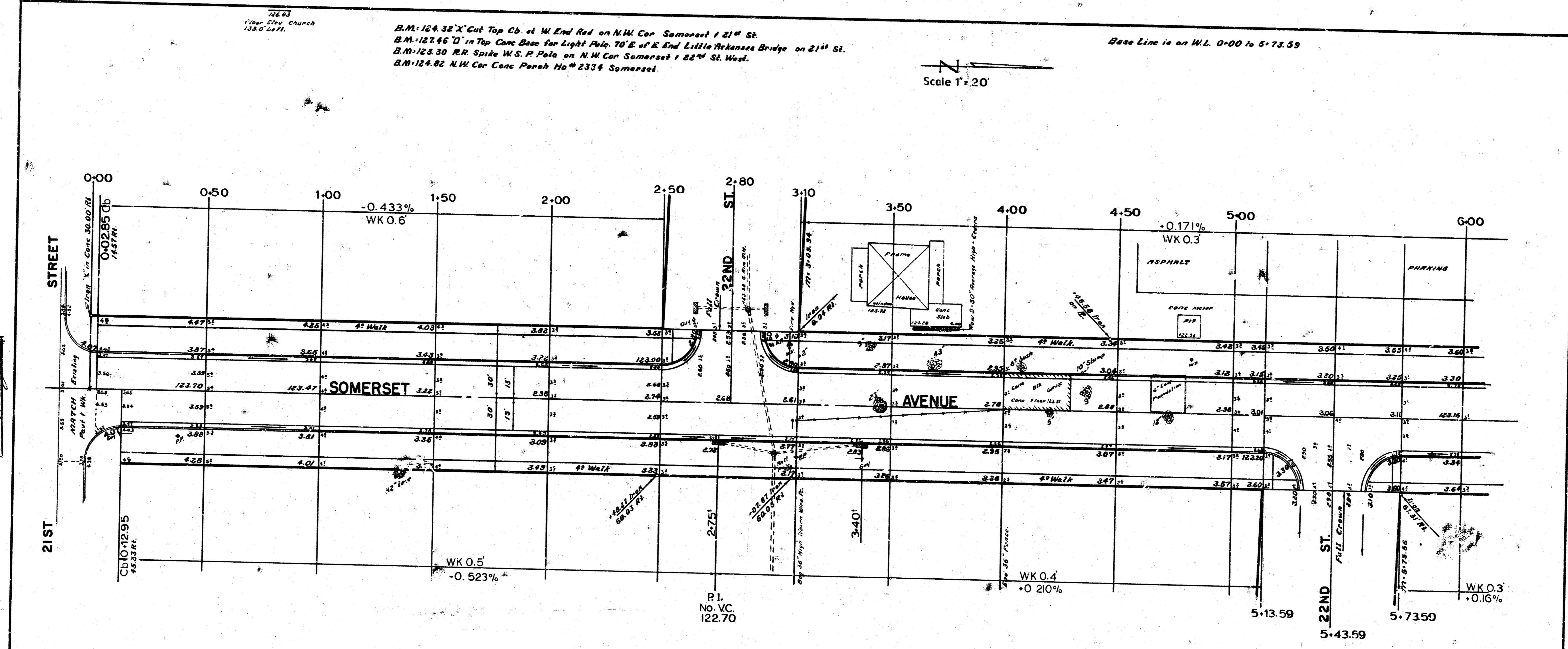
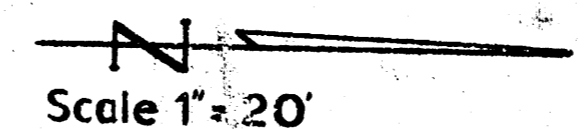


726.83
 1100' Elev. Church
 105.0' Elev.

B.M. 124.32 "X" Cut Top Cb. at W. End Rod on N.W. Cor. Somerset & 21st St.
 B.M. 122.85 "D" in Top Conc Base for Light Pole. 70' E of E. End Little Arkansas Bridge on 21st St.
 B.M. 123.30 R.R. Spike W.S.P. Pole on N.W. Cor. Somerset & 22nd St. West.
 B.M. 124.82 N.W. Cor. Conc. Patch Ho. # 2334 Somerset.

Base Line is on W.L. 0+00 to 5+73.59



Survey Group
 Plan Engineer
 Check Engineer



| PROPERTY | | CITY | |
|-----------------------|------------------------|---------------------|--|
| Excavation | Comp. Fill | Excavation | |
| 1,036.9 Cu Yds | 151.6 - 448.7 - Cu Yds | 148.2 Cu Yds | |
| +10% 103.7 | +10% 45.0 | +10% 14.8 | |
| Total: 1,140.6 Cu Yds | Total: 494.7 Cu Yds | Total: 163.0 Cu Yds | |

SOMERSET AVENUE
 N.L. 21st St. to S.L. 23rd Street.
26'-2'-30" ASPHALTIC-CONC
 City of
 Wichita, Kansas
 B.E. Smith City Engineer
 Date: JUNE 1966 Proj No. C16-26

