

# STREETS IN SOUTH SENECA GARDENS 4<sup>TH</sup> ADDN.

## GOLD

S.L. LOCKWOOD TO N.L. LOT II, BLK. 7

## LOCKWOOD

W.L. LOT I, BLK. 5, TO W.L. GOLD

## MONA

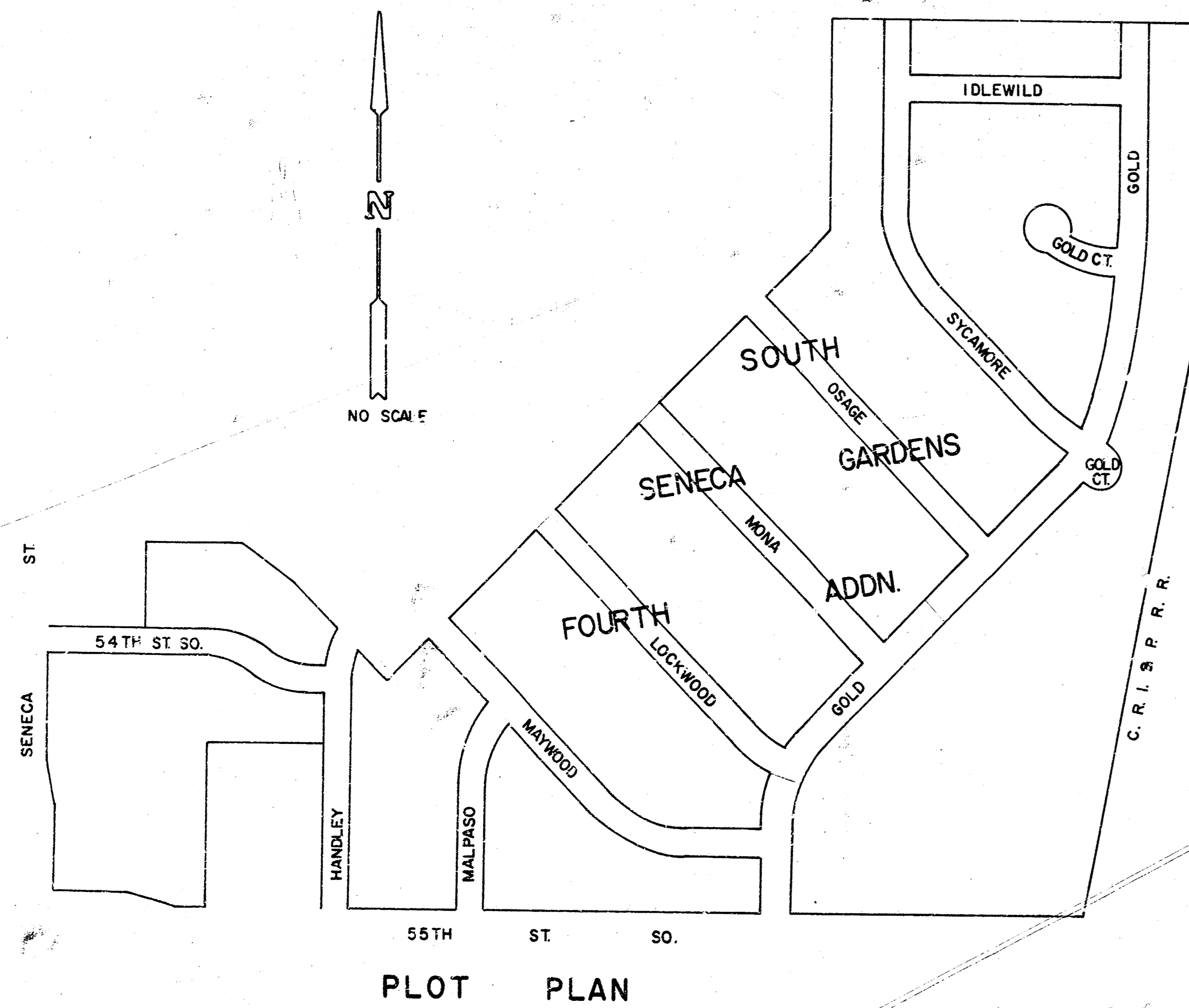
W.L. LOT I, BLK. 6, TO W.L. GOLD

DEAN S. SELLERS - ACTING CITY ENGINEER

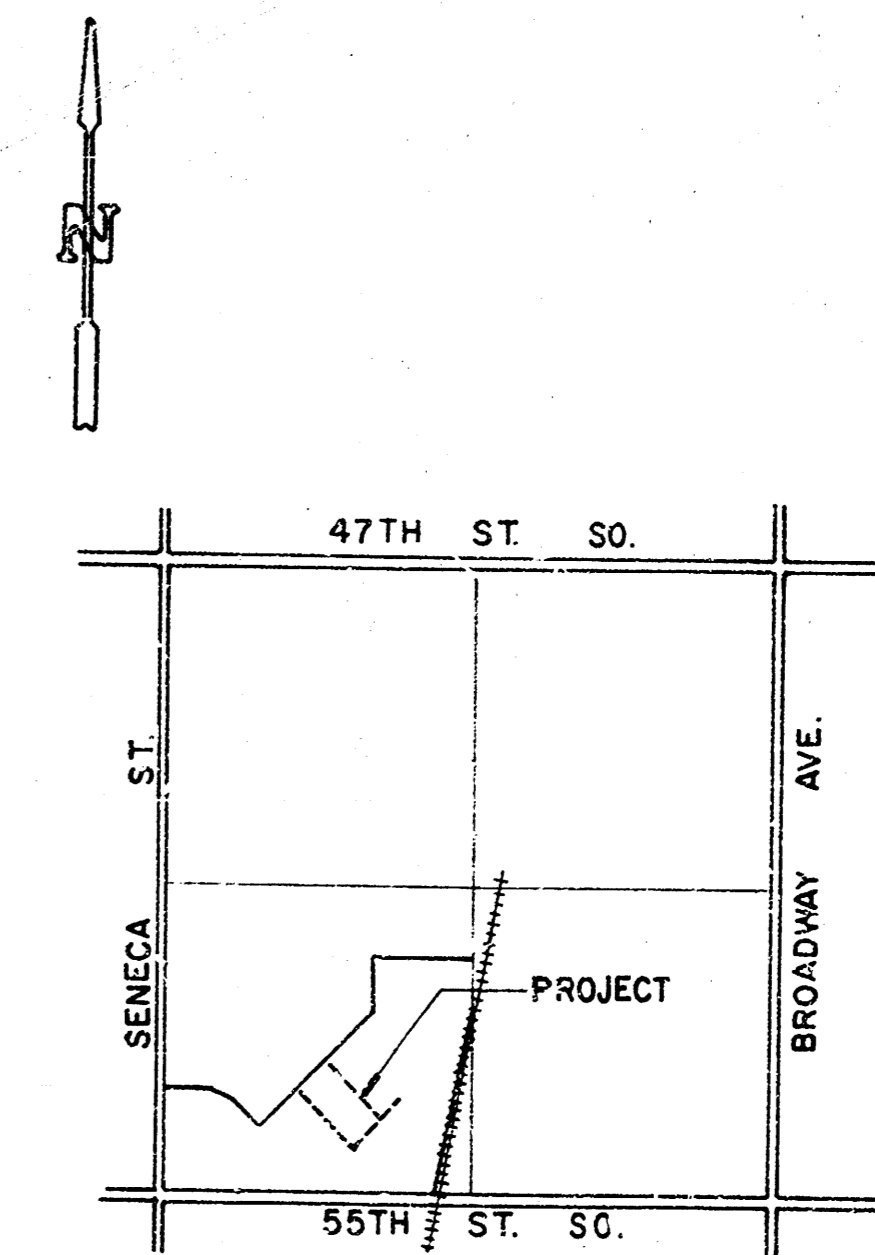
CITY OF WICHITA, KANSAS

PROJ. NO. 472 76 245 8082-000 000 001

DATE:



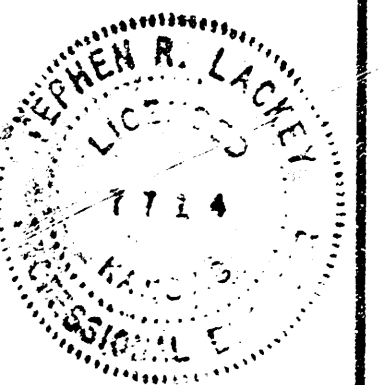
PLOT PLAN



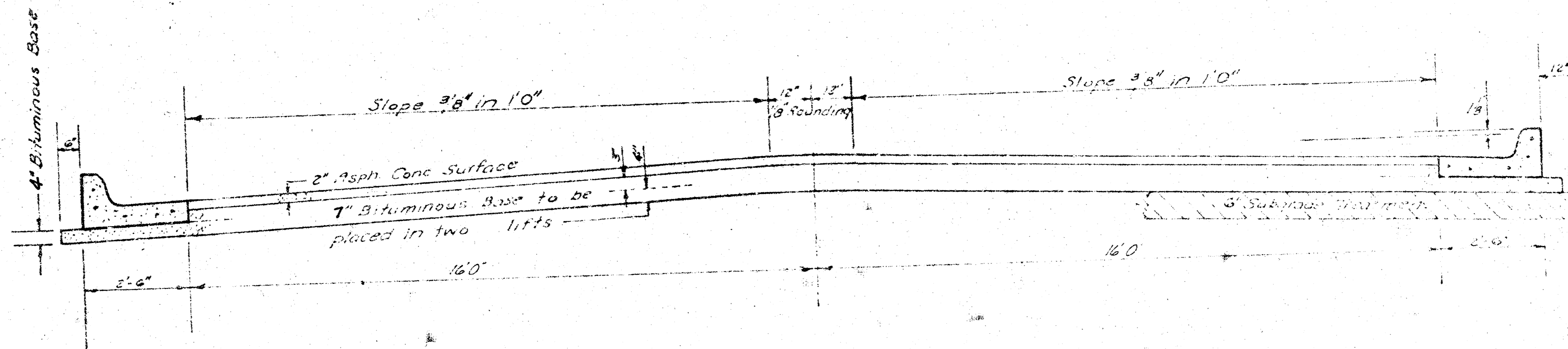
LOCATION MAP

7,660 S.Y. MANIPULATION

NOTE: ENGINEER TO TAKE CROSS-SECTIONS PRIOR TO CONSTRUCTION.



**GOLD**  
 S. L. LOCKWOOD TO N. L. LOT 1, BLK. 7,  
 SOUTH SENECA GARDENS 4TH



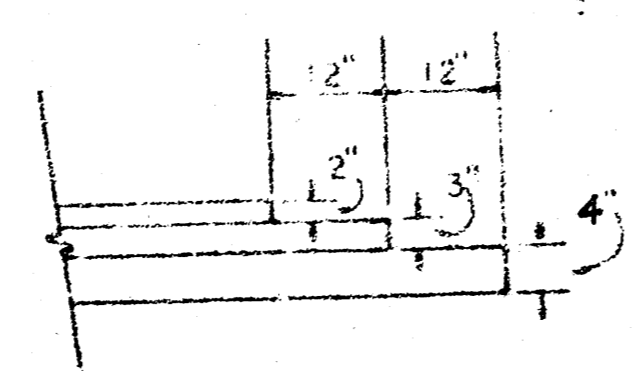
**TYPICAL SECTION**

**37' ASPHALTIC CONCRETE PAVEMENT WITH BITUMINOUS BASE**

A TACK COAT OF EMULSIFIED ASPHALT (SS-1H) SHALL BE APPLIED AT AN APPROXIMATE RATE 0.05 GALLONS PER SQ YD BETWEEN LIFTS OF ASPHALTIC MATERIALS WHEN ORDERED BY THE ENGINEER. TACK COAT WILL NOT BE PAID FOR DIRECTLY AND SHALL BE CONSIDERED AS SUBSIDIARY TO PRICE BID FOR ASPHALTIC PAVEMENT.

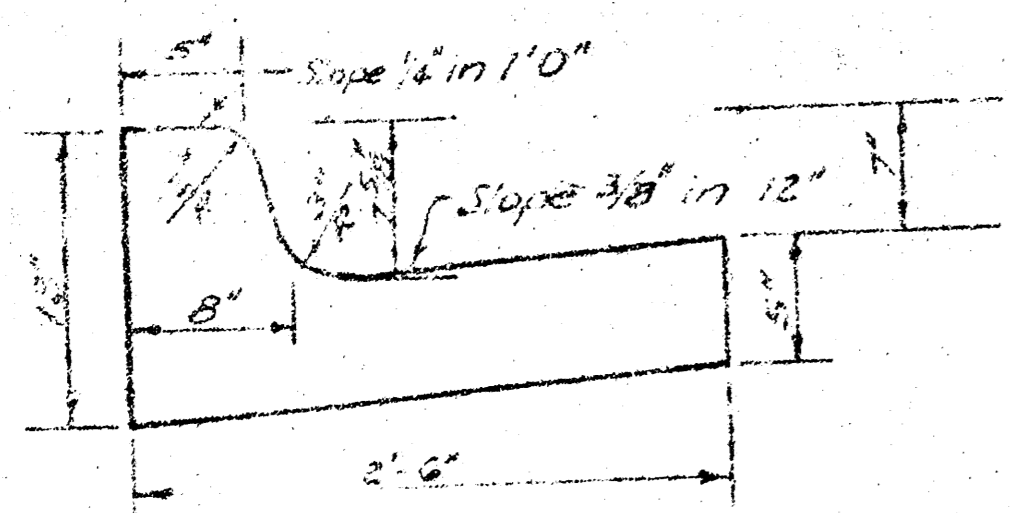
BITUMINOUS BASE AND ASPHALTIC CONCRETE WEARING SURFACE SHALL BE PLACED WITH A LAYDOWN MACHINE HAVING AUTOMATIC ELECTRONIC CONTROLS FOR CROWN AND GRADE. CONSTRUCTION JOINTS IN EACH LIFT SHALL BE STAGGERED A MINIMUM DISTANCE OF 4' WITH JOINTS IN PRECEDING LIFTS AND PLACED SUCH THAT A JOINT WILL BE CONSTRUCTED ON THE CENTERLINE IN THE TOP LIFT.

**DETAIL OF TRANSVERSE CONSTRUCTION JOINTS**

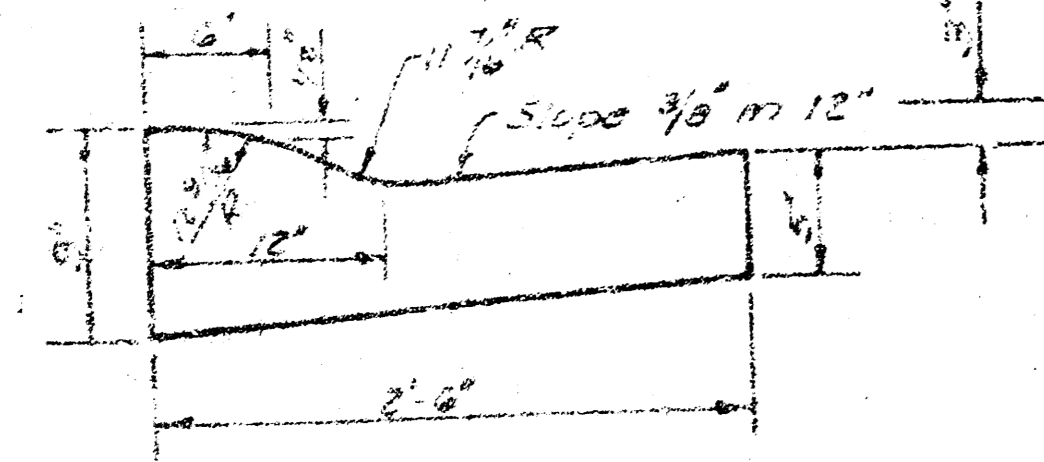


TRANSVERSE CONSTRUCTION JOINTS SHALL BE CONSTRUCTED IN FLEXIBLE BASE PAVEMENTS AT LOCATIONS WHERE PAVEMENT TEMPORARILY ENDS TO FACILITATE FUTURE PAVEMENT CONSTRUCTION AS SHOWN BY DETAIL. THE COST OF CONSTRUCTING THE TRANSVERSE CONSTRUCTION JOINTS SHALL NOT BE MEASURED OR PAID FOR DIRECTLY BUT SHALL BE INCLUDED IN THE BID PRICE FOR SQUARE YARDS OF ASPHALTIC CONCRETE PAVEMENT.

**CONSIDERED CURB & GUTTER**



**ROLL TYPE CURB & GUTTER**



*The 3/8" pavement between the curb and gutter shall be paid as 3/8" Bituminous Base (7" Bituminous Base). The Bituminous base under the curb and gutter shall be paid as 3/8" Bituminous Base.*

**CITY OF WICHITA KANSAS**

DEPARTMENT of PUBLIC WORKS - Engineering  
 Division

DEAN SELLERS ACTING CITY ENGINEER

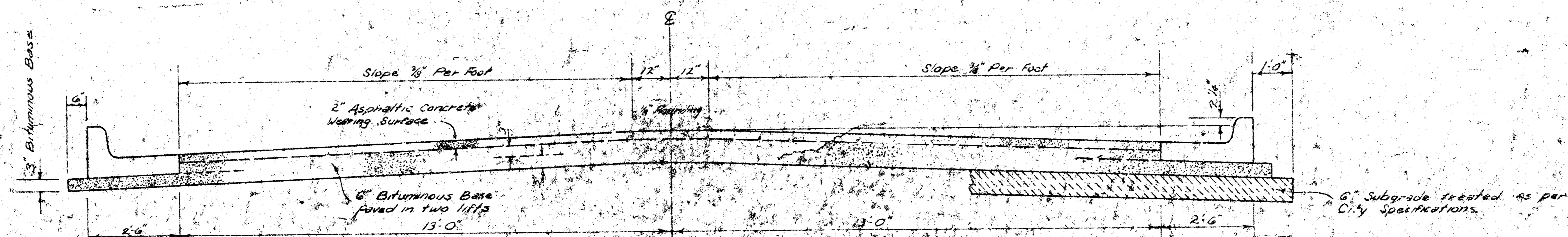
DATE \_\_\_\_\_ Proj No 472 76 245 8082400000001

**LOCKWOOD**

W.L. LOT 1, BLK. 5, SOUTH SENECA  
GARDENS 4TH ADDN TO W.L. GOLD

**MONA**

W.L. LOT 1, BLK. 6, SOUTH SENECA  
GARDENS 4TH ADDN TO W.L. GOLD



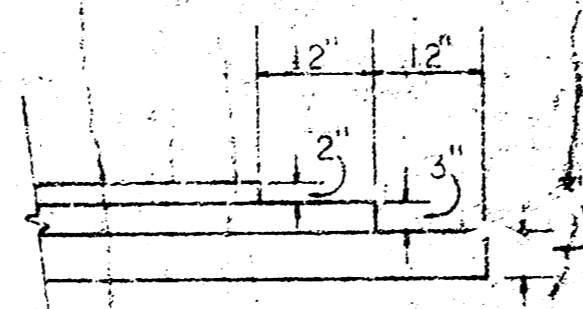
**TYPICAL SECTION**

3' ASPHALTIC CONCRETE PAVEMENT WITH BITUMINOUS BASE

*The A.C. pavement between the Comb. Curb & Gutter shall be paid as 3" A.C. Pavement (6" Bituminous Base). The Bituminous Base under the Comb. Curb & Gutter shall be paid as 3" Bituminous Base.*

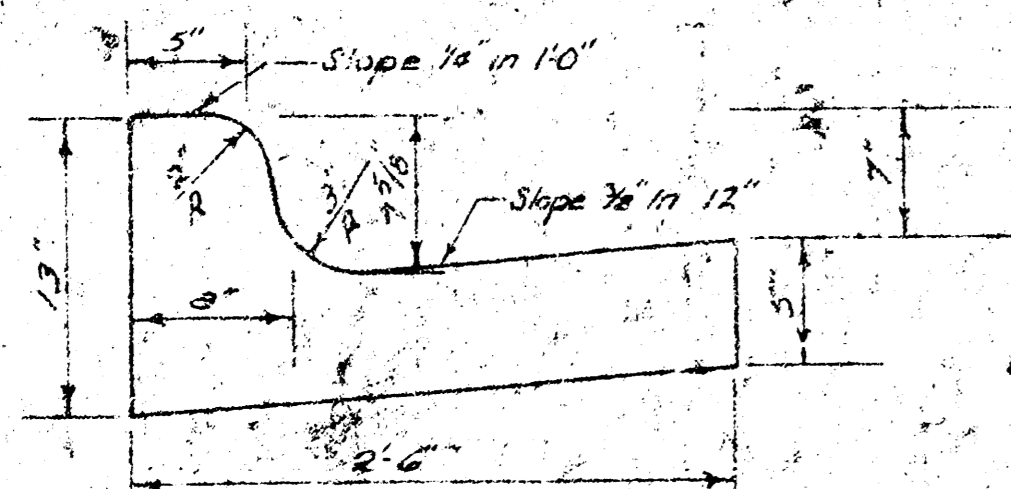
A TACK COAT OF EMULSIFIED ASPHALT (SS-1H) SHALL BE APPLIED AT AN APPROXIMATE RATE OF 0.05 GALLONS PER SQ. YD. BETWEEN LIFTS OF ASPHALTIC MATERIALS WHEN ORDERED BY THE ENGINEER. TACK COAT WILL NOT BE PAID FOR DIRECTLY AND SHALL BE CONSIDERED AS SUBSIDIARY TO PRICE BID FOR ASPHALTIC PAVEMENT. BITUMINOUS BASE AND ASPHALTIC CONCRETE WEARING SURFACE SHALL BE PLACED WITH A LAYDOWN MACHINE HAVING AUTOMATIC ELECTRONIC CONTROLS FOR CROWN AND GRADE. CONSTRUCTION JOINTS IN EACH LIFT SHALL BE STAGGERED A MINIMUM DISTANCE OF 1' WITH JOINTS IN PRECEDING LIFTS AND SUCH THAT A JOINT WILL BE CONSTRUCTED ON THE PAVEMENT CENTERLINE IN THE TOP LIFT.

**DETAIL OF TRANSVERSE CONSTRUCTION JOINTS**

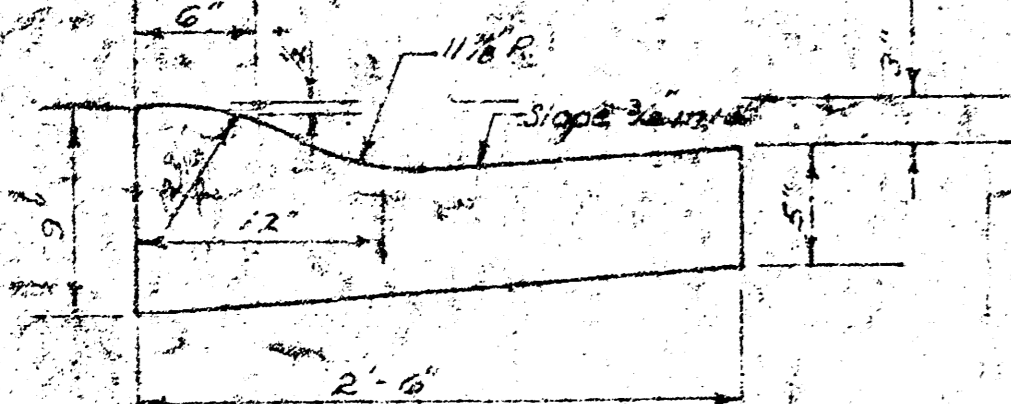


TRANSVERSE CONSTRUCTION JOINTS SHALL BE CONSTRUCTED IN FLEXIBLE BASE PAVEMENTS AT LOCATIONS WHERE PAVEMENT TEMPORARILY ENDS TO FACILITATE FUTURE PAVEMENT CONSTRUCTION AS SHOWN BY DETAIL. THE COST OF CONSTRUCTING THE TRANSVERSE CONSTRUCTION JOINTS SHALL NOT BE MEASURED OR PAID FOR DIRECTLY BUT SHALL BE INCLUDED IN THE BID PRICE FOR SQUARE YARDS OF ASPHALTIC CONCRETE PAVEMENT.

**COMBINED CURB & GUTTER**



**ROLL TYPE CURB & GUTTER**



CITY OF WICHITA, KANSAS

DEPARTMENT OF PUBLIC WORKS — ENGINEERING

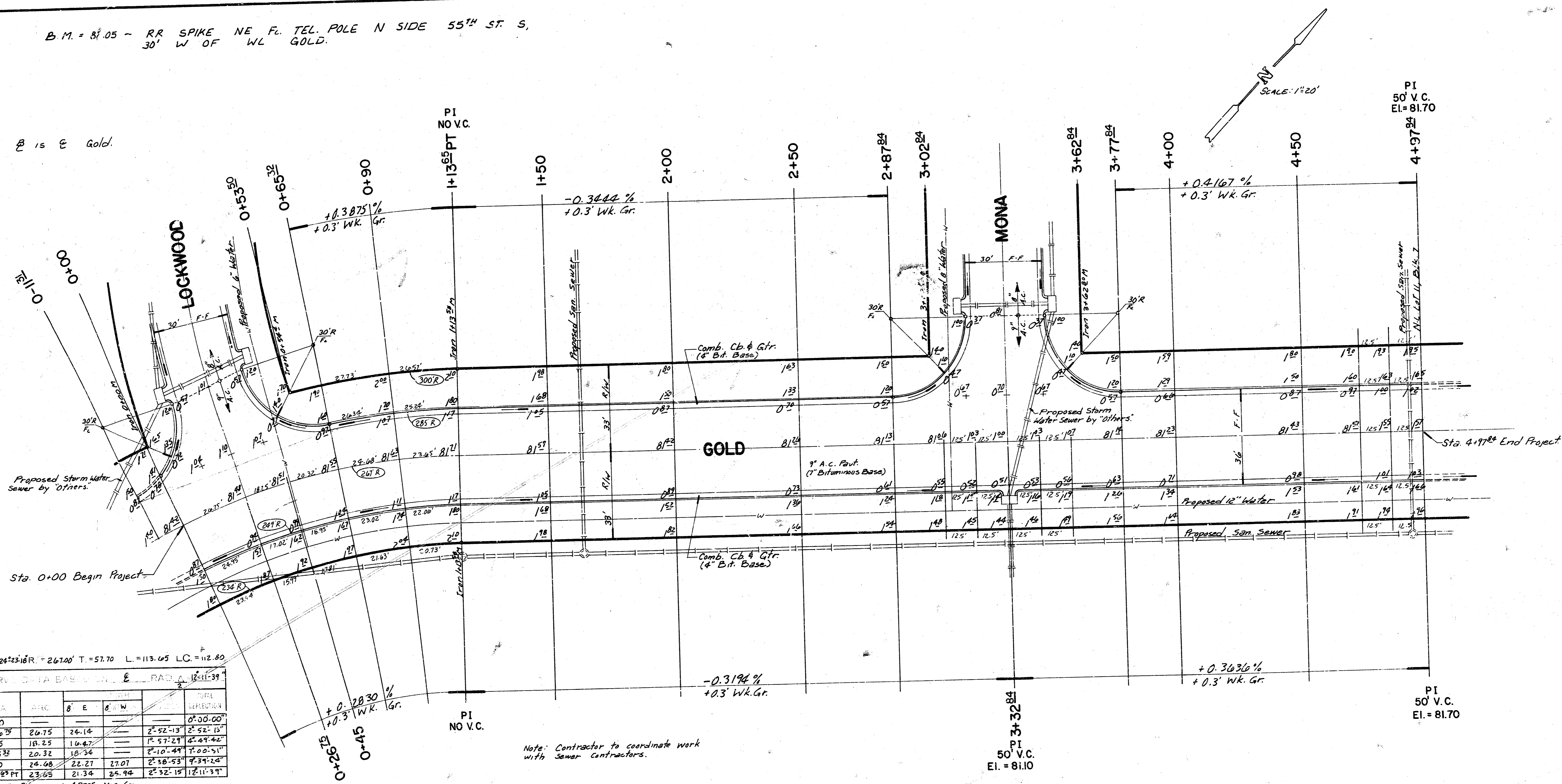
DEAN SELLERS ACTING CITY ENGINEER

DATE: \_\_\_\_\_ PROJ. NO. 472 76 245 80824000 000 001

B.M. = 81.05 - RR SPIKE NE F. TEL. POLE N SIDE 55<sup>TH</sup> ST. S,  
30' W OF WL GOLD.

B is E Gold.

BLK 7  
S.L. LOCKWOOD  
1/77



$\Delta = 24^{\circ}23'16''$   $T = 267.00'$   $L = 57.70'$   $L_c = 113.05'$   $LC = 112.00'$

| STA         | BACK  | 8' E  | 8' W  | CHORD      | CHORD       |
|-------------|-------|-------|-------|------------|-------------|
| 0+00        |       |       |       | 0°-00'-00" |             |
| 0+12.63     | 26.75 | 24.14 |       | 2°-52'-13" | 2°-52'-13"  |
| 0+45        | 18.25 | 10.47 |       | 1°-57'-27" | 4°-49'-42"  |
| 0+65.32     | 20.32 | 18.34 |       | 2°-10'-44" | 7°-00'-34"  |
| 0+90        | 24.68 | 22.27 | 27.07 | 2°-58'-53" | 9°-39'-24"  |
| 1+138.84 PT | 23.65 | 21.34 | 24.94 | 2°-52'-15" | 12°-11'-39" |

Dep. = 6.43775 Min/Ft.

Note: Contractor to coordinate work with Sewer Contractors.

Denotes s.w.s. Inlet By "Others."

**GOLD**  
S.L. LOCKWOOD - N. L. LT. 11, BLK. 7, S. SENECA GARDENS 4TH  
472 76 245 80824 000 000 001

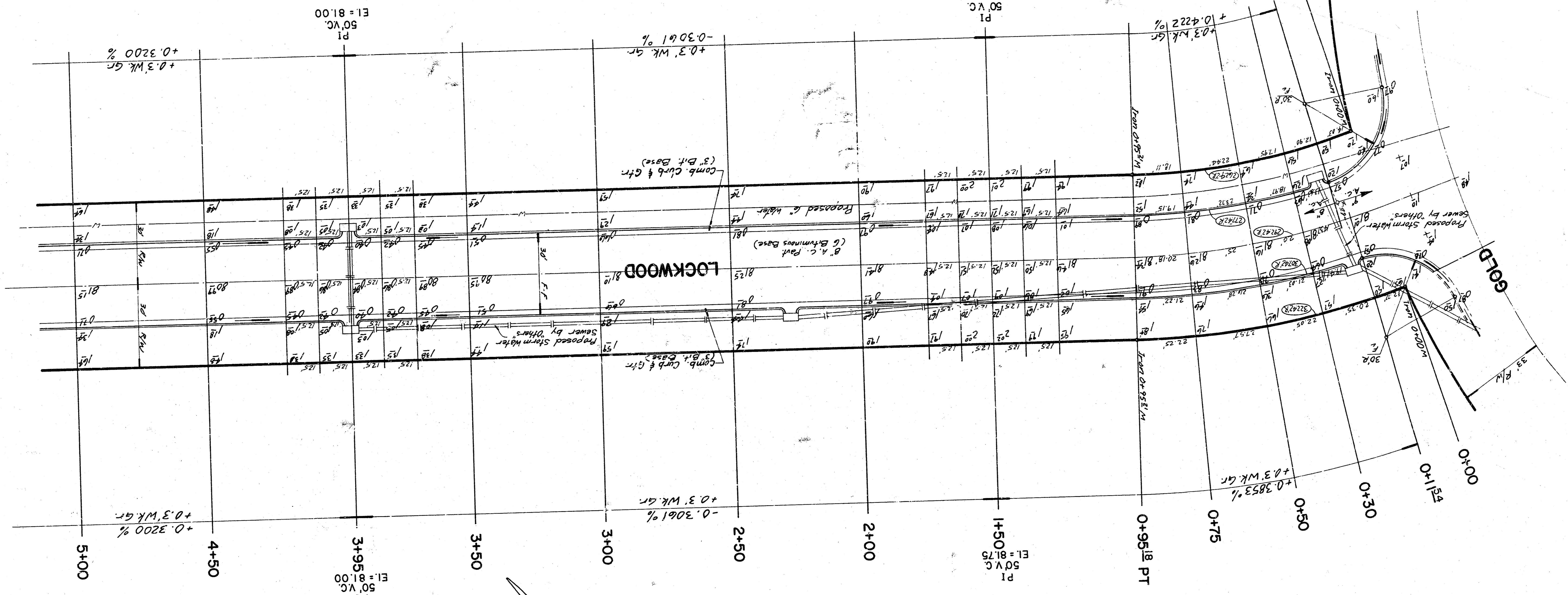
LOCKWOOD  
 W.L. LT. 1, BLK. 5, S. SENECA GARDENS 4TH - W. L. GOLD  
 472 76 245 80824 000000 001

Curve Data - EAST CURB

| Station | Elevation | Grade |
|---------|-----------|-------|
| 0+00    | 81.00     | 0.00% |
| 0+15    | 81.00     | 0.00% |
| 0+30    | 81.00     | 0.00% |
| 0+45    | 81.00     | 0.00% |
| 0+60    | 81.00     | 0.00% |
| 0+75    | 81.00     | 0.00% |
| 0+90    | 81.00     | 0.00% |
| 0+95.18 | 81.00     | 0.00% |

Curve Data - WEST CURB

| Station | Elevation | Grade |
|---------|-----------|-------|
| 0+00    | 81.00     | 0.00% |
| 0+15    | 81.00     | 0.00% |
| 0+30    | 81.00     | 0.00% |
| 0+45    | 81.00     | 0.00% |
| 0+60    | 81.00     | 0.00% |
| 0+75    | 81.00     | 0.00% |
| 0+90    | 81.00     | 0.00% |
| 0+95.18 | 81.00     | 0.00% |



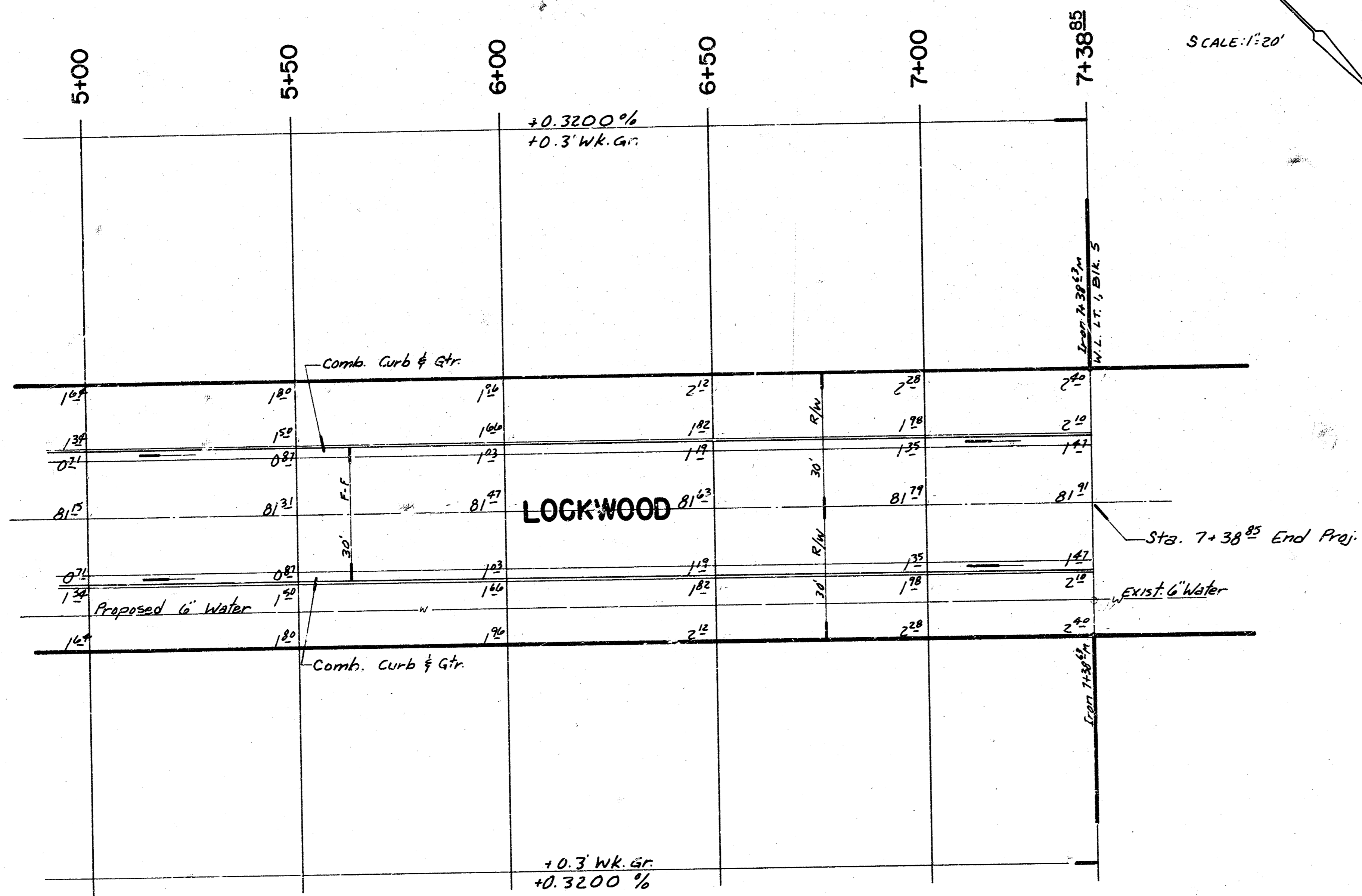
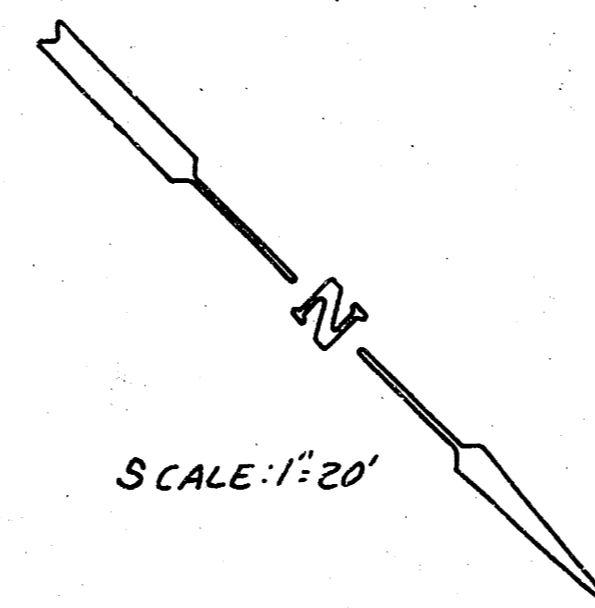
B.M. = 81.08 - RR SPIKE S. R. PP NW COR. LOCKWOOD & SOUTHWIND.

± IS E LOCKWOOD

SCALE: 1"=20'

B.M. = 81.08 ~ RR SPIKE S E PP NW COR. LOCKWOOD & SOUTHWIND.

E 15 E LOCKWOOD

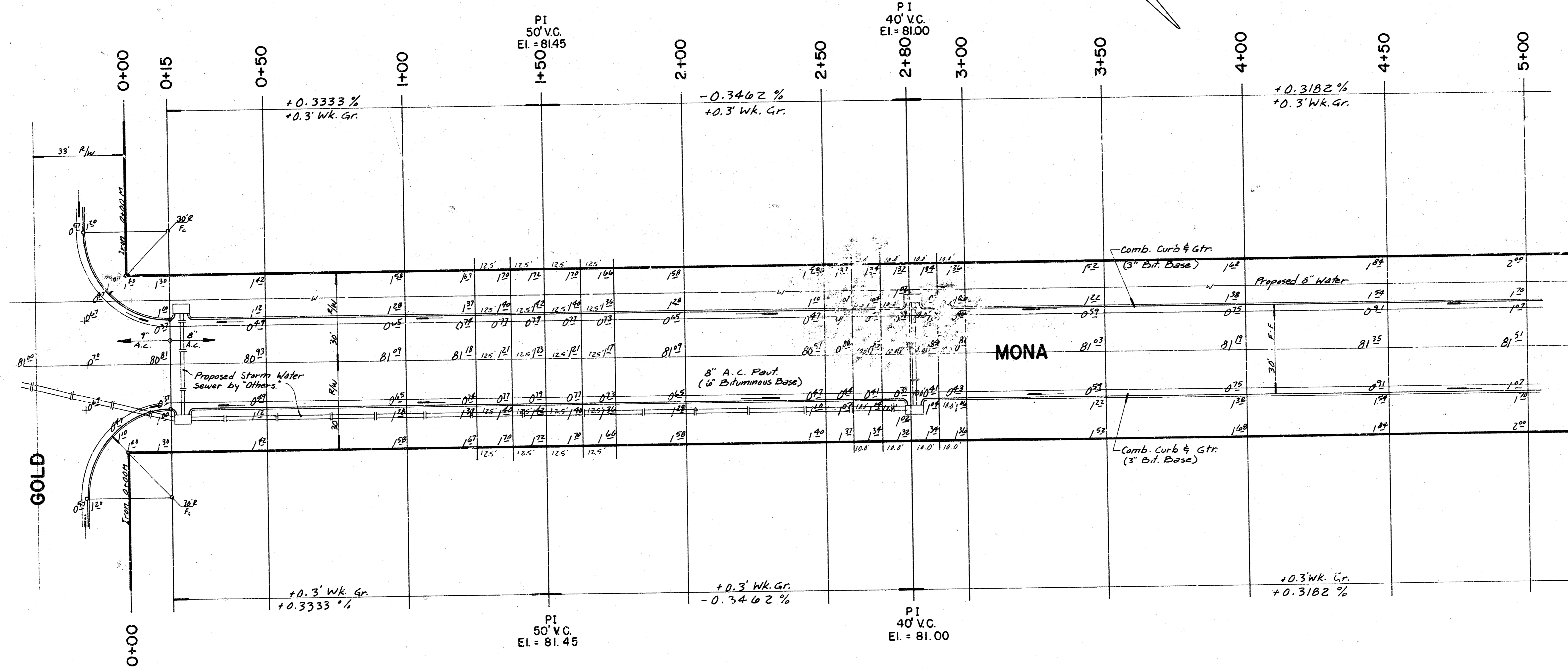
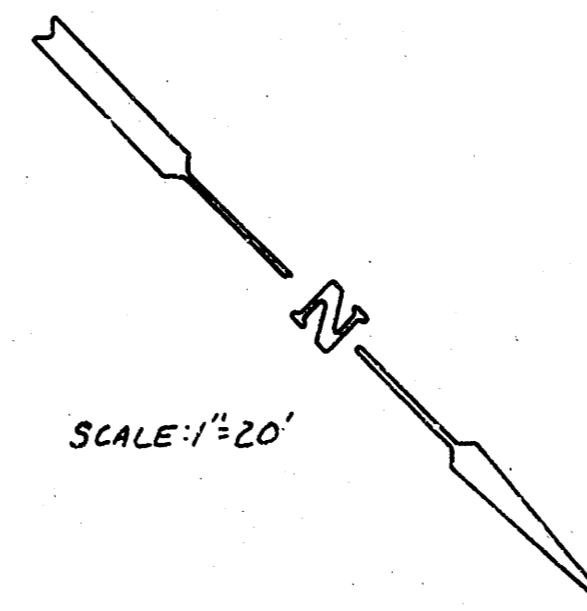


LOCKWOOD

W. L. LT. 1, BLK. 5, S. SENECA GARDENS 4th - W. L. GOLD  
472 76245 80824000 000 001

B.M. = 8403 ~ NW COR. PORCH Ho. # 734 MONA.

E is E MONA



B.M. = 84.03 ~ NW COR. PORCH Ho. # 734 MONA

E 15 E MONA.

SCALE: 1/2" = 20'

